

BAYLOR

LADY BEARS

**2005
NCAA
Champions**

2005-2006 BASKETBALL QUICK FACTS

TEAM INFORMATION

2004-05 Overall Record: 33-3
 2004-05 Big 12 Record / Finish: 14-2 / 1st
 2004-05 Postseason: NCAA Champions
 Lettermen Returning: 8
 Lettermen Lost: 6
 Starters Returning: 3
 Chameka Scott (G, Sr., 7.8 ppg, 4.3 rpg)
 Sophia Young (F, Sr., 18.4 ppg, 9.3 rpg)
 Abiola Wabara (F, Jr., 5.5 ppg, 3.6 rpg)
 Starters Lost: 2
 Steffanie Blackmon (P, 15.4 ppg, 7.9 rpg)
 Chelsea Whitaker (PG, 4.7 ppg, 4.4 apg)

COACHING INFORMATION

Head Coach: Kim Mulkey-Robertson
 (Louisiana Tech '84)
 Record at Baylor: 131-38 (6th year)
 Career Record: 131-38 (6th year)
 Assistant Coaches:
 Bill Brock (Southeastern Oklahoma '76)
 Jennifer Roberts (Louisiana Tech '97)
 Johnny Derrick
 Graduate Assistant: TBA
 Administrative Asst.: Debbie Penney

GENERAL INFORMATION

Location: Waco, Texas
 Founded: 1845
 Enrollment: 13,799
 Interim President: Bill Underwood, J.D.
 Chancellor: Dr. Robert B. Sloan Jr.
 Athletic Director: Ian McCaw
 SWA: Nancy Post
 WBKB Administrator: Paul Bradshaw
 Faculty Rep.: Michael Rogers, J.D.
 Conference: Big 12
 Nickname: Lady Bears
 Colors: Green and Gold
 Arena (cap.): Ferrell Center (10,284)

BAYLOR MEDIA RELATIONS

PHONE: (254) 710-2743
 FAX: (254) 710-1369
 Web Site: www.BaylorBears.com
 Courtside Phone: (254) 710-3955
Basketball Contacts:
 Julie Bennett, Associate Director
 Julie_Bennett@baylor.edu
 (254) 709-9657 - cell phone
 Nick Joos, Assoc. AD/Communications
 Nicholas_Joos@baylor.edu
 (254) 709-9659 - cell phone

BAYLOR ROSTER

No. Name	Pos.	Ht.	Yr.	Ex.	Hometown (High School/JC-Univ.)	2004-05 Stats: GP/GS PPG RPG
Returners						
21 Chameka Scott#	G	6-0	Sr.	3L	Friendswood, Texas (Clear Brook HS)	36/35 7.8 4.3
1 Monique Jones	G	5-9	Jr.	2L	Ferriday, La. (Ferriday HS)	25/1 1.6 0.8
4 Chisa Ononiwu	G	5-7	So.	1L	Houston, Texas (Westfield HS)	13/0 1.3 0.7
12 Latoya Wyatt	G	5-7	Jr.	1L	Fort Worth, Texas (L.D. Bell HS/McLennan CC)	33/1 3.9 1.1
20 Angela Tisdale	G	5-5	So.	1L	Austin, Texas (Del Valle HS)	35/9 3.7 1.2
22 Jordan Davis	G	5-9	Sr.	3L	Celina, Texas (Celina HS)	30/0 2.5 0.7
33 Sophia Young#	F	6-1	Sr.	3L	St. Vincent, The Grenadines, West Indies (Evangel Academy, Shreveport, La.)	36/36 18.4 9.3
35 Abiola Wabara#	F	6-0	Jr.	2L	Parma, Italy (Liceo Scientifico Statale G. Marconi HS)	36/23 5.5 3.6
Newcomers						
3 Jessica Morrow	G/F	6-2	Fr.	HS	Humble, Texas (Humble HS)	
14 Rachel Allison	F/P	6-1	Fr.	HS	Jonesboro, Ark. (Jonesboro HS)	
15 Jhasmin Player	G	5-10	Fr.	HS	Bay City, Texas (Bay City HS)	
34 Tricia Abbott	P	6-3	Fr.	HS	Houston, Texas (Memorial HS)	
Bernice Mosby*	F	6-1	Sr.	TR	Brooksville, Fla. (Hernando HS/University of Florida)	
2004-2005 Lettermen Lost						
Steffanie Blackmon	F	6-4			Rowlett, Texas (Rowlett HS)	36/35 15.4 7.9
Chanelle Fox	G	5-11			Houston, Texas (Westfield HS)	29/13 2.0 1.4
Melanie Hamerly	P	6-5			Orange, Texas (Little Cypress-Mauriceville HS)	19/0 0.9 0.8
Victoria Jones	PG	5-4			San Marcos, Texas (San Marcos HS)	11/0 0.7 0.3
Emily Niemann	F	6-1			Houston, Texas (Westbury Christian)	36/0 9.8 3.1
Chelsea Whitaker	PG	5-9			Dallas, Texas (Skyline HS/University of Virginia)	33/27 4.7 2.9
#2004-05 Starter					* 2005-06 Redshirt (transfer)	

2004-2005 HIGHLIGHTS

- Baylor claimed the **NCAA National Championship** for the first time in school history, beating three No. 1 seeds en route to the title.
- Fifth-year head coach **Kim Mulkey-Robertson** led the Lady Bears to a 33-3 record, the Lady Bears' fifth straight 20-win season and Baylor's fifth straight postseason appearance.
- **Mulkey-Robertson** is 131-38 (.775) in her five seasons as Baylor's head coach.
- The Lady Bears won the Big 12 Conference title for the first time in school history.
- The Lady Bears won the Big 12 Conference Tournament for the first time in school history.
- **Sophia Young** - Kodak All-American; US Basketball Writers All-American; Most Outstanding Player NCAA Final Four; Most Outstanding Player NCAA Tempe Regional; MVP of Big 12 Tournament; First-team All-Big 12.
- The Lady Bears received their highest final Coaches Poll ranking at No. 1, and were No. 5 in the final AP Poll.

2005-2006

- The 2005-2006 Lady Bears return 70.4 percent of scoring and 66.1 percent of rebounding off last year's NCAA Championship team.
- Baylor will be led by **All-American and National Player of the Year** candidate **Sophia Young** who averaged 18.4 points and 9.3 rebounds a game in 2004-2005.
- Eight letterwinners, including three starters, return off last season's championship team.
- Four freshmen, including Texas' 2004-05 Class 5A and Class 4A Players of the Year **Jessica Morrow** and **Jhasmin Player**, respectively, represent an impressive group of newcomers.

Baylor Lady Bears

2005-2006 Numerical Roster

<u>No.</u>	<u>Name</u>	<u>Pos.</u>	<u>Ht.</u>	<u>Cl-Exp</u>	<u>Hometown (HS/Last School)</u>
1	Monique Jones	G	5-9	Jr-2L	Ferriday, La. (Ferriday HS)
3	Jessica Morrow	G/F	6-2	Fr-HS	Humble, Texas (Humble HS)
4	Chisa Ononiwu	G	5-7	So-1L	Houston, Texas (Westfield HS)
12	Latoya Wyatt	G	5-7	Jr-1L	Fort Worth, Texas (L.D. Bell HS/McLennan CC)
14	Rachel Allison	F/P	6-1	Fr-HS	Jonesboro, Ark. (Jonesboro HS)
15	Jhasmin Player	G	5-10	Fr-HS	Bay City, Texas (Bay City HS)
20	Angela Tisdale	G	5-5	So-1L	Austin, Texas (Del Valle, HS)
21	Chameka Scott	G	6-0	Sr-3L	Friendswood, Texas (Clear Brook HS)
22	Jordan Davis+	G	5-9	Sr-3L	Celina, Texas (Celina HS)
33	Sophia Young	F	6-1	Sr-3L	St. Vincent, The Grenadines (Evangel Academy, Shreveport, La.)
34	Tricia Abbott	P	6-3	Fr-HS	Houston, Texas (Memorial HS)
35	Abiola Wabara+	F	6-0	Jr-2L	Parma, Italy (Liceo Scientifico Statale G. Marconi HS)
	Bernice Mosby#	F	6-1	Sr-TR	Brooksville, Fla. (Hernando HS/University of Florida)

Head Coach: Kim Mulkey-Robertson (6th year)

Associate Head Coach: Bill Brock

Assistant Coaches: Jennifer Roberts, Johnny Derrick

+ has used a redshirt season

will sit out the 2005-06 season due to NCAA transfer rule

Pronunciation Guide

Chameka Scott - Sha - meeka

Abiola Wabara - Abby - ola Wub - ara

Chisa Ononiwu - Chee-sa O - na - ne - wu



Kim Mulkey-Robertson

6th Season - 131-38 (.775)

2005 NCAA National Champions

2005 Big 12 Champions

Ever since Baylor University named Women's Basketball Hall of Famer Kim Mulkey-Robertson as Baylor's fourth Lady Bear head coach on April 4, 2000, the former All-American and Olympic gold medalist has brought repeated national prominence to Baylor University and the women's basketball program.

This season in just her fifth year at program's helm, the Lady Bears achieved the ultimate prize each NCAA Division I team covets, a NCAA National Championship. In doing so, Mulkey-Robertson became the first women's basketball coach to win a NCAA national championship as both a player and a head coach. She joins former North Carolina coach Dean Smith and Texas Tech's Bobby Knight as the only members of that elite group.

After just five seasons as a head coach, Mulkey-Robertson has taken the Lady Bears to five postseason competitions, including four NCAA Tournaments, which includes the school's 2005 NCAA national championship, a national ranking of No. 1 and the championship (2005) in the toughest women's basketball conference in the nation, the Big 12. She has accumulated an impressive 131-38 (.775) career record at Baylor.

Mulkey-Robertson continued to add to her impressive list of achievements. Numerous honors were bestowed upon her after her inaugural season. She was named one of the Top 50 Female High School Athletes of the 20th Century, National Coach of the Year by Real Sport magazine and Big 12 Coach of the Year by the Dallas Morning-News and Waco Tribune-Herald. In 2003, Mulkey-Robertson was inducted into COSIDA Academic All-America Hall of Fame and was a unanimous choice for Big 12 Coach of the Year honors in 2005. She, along with North Carolina head coach Roy Williams, received the New York Athletic Club's famed Winged Foot Award on May 19 in New York City.

As a player, Mulkey-Robertson led the Louisiana Tech Lady Techsters to a 130-6 record, two national titles and four Final Fours from 1980-84. During that time the 5-foot-4 playmaker, known for her spectacular passes and French braids, also led Louisiana Tech to its first two national championships (1981 and 1982) and was a part of the USA's gold medal-winning team at the 1984 Olympics and the 1983 Pan American Games.

Mulkey-Robertson averaged 6.38 assists and 1.56 steals per game and ranks second on Tech's all-time list in assists and 12th in steals. In addition, the summa cum laude scholar was a two-time Academic All-American.

Mulkey-Robertson and her husband Randy, a former Louisiana Tech quarterback, have two children, Makenzie (13) and Kramer (10). Randy is a local businessman who owns his own public relations firm. He is also very involved in community activities and can be seen courtside at the games as an avid supporter of Lady Bear basketball. Makenzie and Kramer are both extremely active in sports. Makenzie plays basketball, volleyball, softball and participates in track and field while Kramer plays football, soccer, basketball and baseball. Makenzie is a member of Midway's two-time Little League Softball World Series Championship team. The family, when not attending sporting events, can often be found on Lake Waco riding jet skis, playing basketball on their home court or in the backyard batting cage.

Mulkey-Robertson's Collegiate Record

Coach

Year	School	Position	Record	Postseason
2004-05	Baylor	Head Coach	33-3	NCAA National Champions
2003-04	Baylor	Head Coach	26-9	NCAA Sweet 16
2002-03	Baylor	Head Coach	24-11	WNIT Finals
2001-02	Baylor	Head Coach	27-6	NCAA Tournament
2000-01	Baylor	Head Coach	21-9	NCAA Tournament
1999-00	Louisiana Tech	Assoc. Head Coach	31-3	NCAA Elite Eight
1998-99	Louisiana Tech	Assoc. Head Coach	30-3	NCAA Final Four
1997-98	Louisiana Tech	Assoc. Head Coach	31-4	NCAA National Runner-Up
1996-97	Louisiana Tech	Assoc. Head Coach	31-4	NCAA Sweet 16
1995-96	Louisiana Tech	Asst. Coach	31-2	NCAA Elite Eight
1994-95	Louisiana Tech	Asst. Coach	28-5	NCAA Sweet 16
1993-94	Louisiana Tech	Asst. Coach	31-4	NCAA National Runner-Up
1992-93	Louisiana Tech	Asst. Coach	26-6	NCAA Elite Eight
1991-92	Louisiana Tech	Asst. Coach	20-10	NCAA First Round
1990-91	Louisiana Tech	Asst. Coach	18-12	NCAA First Round
1989-90	Louisiana Tech	Asst. Coach	32-1	NCAA Final Four
1988-89	Louisiana Tech	Asst. Coach	32-4	NCAA Final Four
1987-88	Louisiana Tech	Asst. Coach	32-2	NCAA Champions
1986-87	Louisiana Tech	Asst. Coach	30-3	NCAA National Runner-Up
1985-86	Louisiana Tech	Asst. Coach	27-5	NCAA Elite Eight

Coach at Louisiana Tech Totals: 430-68 (.863)

Year	School	Record	Postseason
1983-84	Louisiana Tech	30-3	NCAA Final Four
1982-83	Louisiana Tech	31-2	NCAA National Runner-Up
1981-82	Louisiana Tech	35-1	NCAA National Champions
1980-81	Louisiana Tech	34-0	AIAW National Champions

Player at Louisiana Tech Totals: 130-6 (.956)

Combined Record as Collegiate Player and Assistant Coach:

(19 years) 560-74 (.883)

Head Coaching Record

(5 years) 131-38 (.775)

• In her 24 years of involvement in NCAA Division I basketball, Mulkey-Robertson's teams have won 20 or more games 23 times and have posted 30 or more victories 15 times.

Mulkey-Robertson's Honors and Achievements

1981

- ◆ Won gold medal for South Team at Olympic Festival (Syracuse, N.Y.).
- ◆ Won AIAW National Championship.

1982

- ◆ Member of USA Basketball Select Team.
- ◆ Won NCAA National Championship.

1983

- ◆ Won gold medal at Pan Am Games in Caracas, Venezuela.
- ◆ Academic All-American.

1984

- ◆ NCAA Postgraduate Scholarship winner.
- ◆ Academic All-American.
- ◆ James Corbett Award (Louisiana's College Athlete of the Year).
- ◆ Naismith "Small Player of the Year"
- ◆ Olympic Gold medalist at Los Angeles games.

1985

- ◆ Inducted into National High School Hall of Fame.

1986

- ◆ Inducted into Louisiana High School Hall of Fame.

1990

- ◆ Inducted into the Louisiana Sports Writers Hall of Fame.

1992

- ◆ Inducted into the Louisiana Tech Athletics Hall of Fame.

1999

- ◆ Lone female named among Louisiana Sports Writers top 25 athletes of the 20th century.
- ◆ Named one of top three assistants by *Women's Basketball Journal*.
- ◆ Listed by *Sports Illustrated* as one of the top 50 greatest Louisiana sports figures of the 20th century.

2000

- ◆ Named Baylor's fourth head coach.
- ◆ Inducted into the Women's Basketball Hall of Fame.

2001

- ◆ Named one of top 50 Female High School Athletes of the 20th century.
- ◆ National Coach of the Year - *Real Sport Magazine*.
- ◆ Big 12 Coach of the Year - *Dallas Morning News and Waco Tribune-Herald*.

2002

- ◆ Texas Association of Basketball Coaches Senior College Coach of the Year.

2003

- ◆ Inducted into CoSIDA Academic All-America Hall of Fame.

2005

- ◆ Big 12 Coach of the Year.
- ◆ Winged Foot Award.

**Double-Doubles**

Season: 17

Career: 44

2004-05 Honors:

Kodak/WBCA All-American
 U.S. Basketball Writers Association All-American
 Associated Press All-American (second team)
 2005 NCAA Final Four Most Outstanding Player
 2005 Tempe Regional Most Outstanding Player
 MVP Big 12 Tournament
 All-Big 12
 Wooden Award Finalist
 Naismith Trophy List
 Wade Trophy List

As a junior (2004-05): Baylor team co-captain Sophia Young earned 2004-05 first-team All-America honors from both Kodak/WBCA and the U.S. Basketball Writers Association of America ... The first player in school history so honored by the writers' organization, she is its third Kodak honoree ... Second-team All-America recognition from The Associated Press ... Earned first-team All-District honors from Kodak/WBCA ... A two-time first-team All-Big 12 performer, in nine career NCAA Tournament games she's averaged 22.0 points and 8.7 rebounds per outing, which includes 2004-05 marks of 23.0 ppg and 8.5 rpg ... Shot 51.9 percent (54-for-104) from the floor and 78.9 percent (30-of-38) at the line in BU's six NCAA Tournament wins ... Had 21 points and six rebounds in 20 minutes vs. Illinois State in opening-round of NCAA Tournament, then registered 25 points, eight rebounds and a season-high tying five steals against Oregon ... Recorded game-high 26 points, seven rebounds and two assists in 39 minutes of Sweet 16 victory over Minnesota ... Garnered Tempe Region MOP honors after a 19-point, 11-rebound, six-assist, four-steal 39-minute effort vs. North Carolina in title game ... 21 points, 10 rebounds, six assists, four steals and no turnovers in 40 minutes vs. LSU in NCAA semifinals ... Named the Most Outstanding Player of the Final Four with 26 points, nine rebounds and four assists against Michigan State in the championship game ... In BU's eight 2005 postseason wins (six NCAA, three Big 12), she averaged 21.3 points, 9.0 rebounds and 3.7 assists while shooting 52.1 percent from the floor and 77.2 percent at the foul line ... Led Baylor to 2005 Big 12 Tournament title and was named the event's Most Valuable Player after averaging 18.0 points, 10.0 rebounds and 4.3 assists over three contests ... 18 points, eight rebounds and four steals in 37 minutes against Kansas State in Big 12 title game ... 18 points, 13 rebounds and a career-high tying eight assists in 40 minutes vs. Texas Tech in Big 12 semifinal followed 18-point, nine-rebound game vs. Missouri in quarterfinals ... Had 17 double-doubles on year (which equaled the fourth-best one-year total in school history) and scored in double-digits in every game (and a career-best 46 straight contests dating to 2003-04) ... Her 14, 20-point efforts include season-high 29 points and 14 boards in career-best 49 minutes at Nebraska ... Led squad in rebounding 21 times, scoring 21 times and both categories on 16 occasions ... Drained game-winning jumper in Baylor's 73-72 win at Oklahoma, Feb. 9 ... Among Baylor's all-time leaders in field goal percentage (No. 1, .546), double-doubles (No. 2, 44), steals (No. 2, 244), field goals made (No. 2, 733), rebound average (No. 4, 9.3 rpg), rebounds (No. 5, 987), points (No. 5, 1,744), field goal attempts (No. 6, 1,342), blocks (No. 7, 98) and scoring average (No. 9, 16.5 ppg) ... The only Lady Bear to start every 2004-05 game, her string of 87 straight starts is squad's longest active streak ... Averaged team-highs of 18.4 ppg and 9.3 rpg; but posted Big 12 marks of 18.4 ppg and 9.8 rpg ... Shared Big 12 lead in double-doubles at 17 with Kansas State's Kendra Wecker, ranked No. 2 in offensive rebounds (3.50 orpg) and rebounding (9.3 rpg), No. 3 in field goal percentage (.526), No. 3 in scoring (18.4 ppg), No. 6 in defensive rebounds (5.78 drpg), No. 9 in steals (1.94 spg), No. 14 in assists (2.86 apg) and minutes played (32.5), No. 15 in free throw percentage (.705) ... Three-time 2004-05 Big 12 Player of the Week pick ... A 70.5 percent foul shooter for the year, she hit 79.3 percent (69-of-87) at the line over the last 15 games, including 30-for-38 (78.9 percent) in six NCAA Tournament contests ... No. 2 on team with 103 assists, she collected two or more 26 times and averaged 4.0 apg in her last 14 outings while recording a career-high eight assists twice ... Over Baylor's school record 20-game win streak, she averaged 19.4 points while shooting 55.0 percent (155-of-282) from the floor ... Grabbed five or more rebounds in 32 of 36 starts with 17 double-digit outings and a season-high of 15 caroms against Texas in Waco ... 26 playing stints of 30 or more minutes with four complete game performances on year ... In 13 games against ranked (AP) teams, she averaged 19.5 points and 10.5 rebounds while producing nine double-doubles ... One of seven Lady Bears to attain a GPA of 3.0 or better for fall semester, she was named to the Big 12 Commissioner's Honor Roll ... With 661 points on the year, she cracked the school's single-season top 10, finished at No. 8, while her 334 rebounds rank as BU's seventh-best one-year total.

As a sophomore (2003-04): Led the team in scoring (16.7), rebounding (8.6), steals (8.7) and field goal percentage (.555) ... Ranked No. 2 in the Big 12 in rebounding and steals, No. 4 in field goal percentage and No. 6 in scoring ... Scored a career-high 30

points against No. 2 Texas in the semifinals of the Big 12 Tournament ... Shared team MVP honors with teammate Steffanie Blackmon for the second straight year ... Also earned the team's Rebounding Award ... Recorded her first double-double of the season and 18th of her career against Nicholls State added nine more for a total of 10 ... Led the team in scoring and rebounding in 21 and in scoring 15 games ... Scored 20 points or more in nine games (Washington State, Eastern Kentucky, N.C. State, Texas Tech (2), Kansas, Texas, Loyola Marymount, Florida) ... Named to the all-tournament team at Rice Invitational and was MVP of the San Juan Shootout ... Dished out a then-career-high five assists against Eastern Michigan ... Turned in a double-double against Texas A&M in the second half with 10 points and 11 rebounds ... Reached 500 rebounds in just 53 games ... Named Big 12 Player of the Week (Jan. 19) ... Named first-team All-Big 12 ... Reached 1,000 points in 67 games ... Named to Big 12 all-tournament team.

As a freshman (2002-03): Experienced the most successful freshman season ever by a Baylor player ... Shared team MVP honors with Steffanie Blackmon ... Set a new Baylor and Big 12 record for most rebounds in a game with 25 against Auburn in the championship game of the WNIT ... That total ranked fourth-best nationally ... Became the first freshman in the history of the Big 12 and former Southwest and Big Eight Conferences to lead the league in rebounding ... Was the only player in the Big 12 to average a double-double (14.2 points, 10.0 rebounds) ... Among all Big 12 players, Young ranked No. 1 in rebounding, No. 4 in steals, No. 13 in blocked shots and No. 14 in scoring ... Among Big 12 freshmen she ranked No. 1 in scoring, rebounding and steals, was No. 2 in blocked shots and No. 4 in field goal percentage ... Although bypassed by the coaches, Young was the media's choice for league freshman of the year honors ... Named honorable mention All-Big 12 ... Named second-team Freshman All-American by WomensCollegeHoops.com ... Earned league Rookie of the Week honors three times (Dec. 30, Feb. 17, March 7) ... Named to the all-tournament team at the GranTree Classic, Women's Sports Foundation Tournament and the WNIT ... Played in every game and started 22 ... Averaged 14.2 points, 10.0 rebounds, 2.49 steals, 1.23 blocks and 27.8 minutes a game ... Had 28 games where she scored in double figures, 17 with double figure rebounds and 17 double-doubles ... Scored a career high 26 points twice (Texas Tech, Texas A&M) ... Was an impressive 11-of-13 from the floor (.846) against Missouri ... Registered seven steals twice (North Texas, Oklahoma State).

Before Baylor: Enrolled in Baylor after a standout three-year career at Evangel Academy in Shreveport, La. ... Was an exchange student at Evangel Academy, originally hails from St. Vincent, The Grenadines, West Indies ... Averaged 26 points and 15.3 rebounds a game as a senior for the Eagles ... Played for Dave Wilkins and Amanda Wilson ... Set a school record when she scored 48 points against Ruston High School ... Named all-state and District 1-5A MVP ... Also earned all-city honors ... Played in the Louisiana All-Star game ... Named MVP of Junior National tryouts ... Earned the school's Distinguished Athlete Award ... Excelled in the classroom as well ... Was a member of the school's Honor Society and Student Council ... Also earned Outstanding Academic Achievement Award and Top Eagle Award ... Volunteered for the Winter Circle Kids Camp.

Personal: Full name is Sophia Yvonne Young ... Nickname is So-So ... Daughter of Denniston Young of Brooklyn, N.Y., and Annie Christopher of St. Vincent, The Grenadines, West Indies ... Born Dec. 15, 1983, in St. Vincent, The Grenadines, West Indies ... Majoring in education with all-level human performance teaching field ... Would like to play in the WNBA and coach at the high school level ... Selected Baylor over Nicholls State, Centenary, Arkansas-Little Rock and Arkansas-Monticello ... Chose Baylor because of its Christian environment and the basketball program is getting off to a good start ... Felt that this is where God wanted her to be ... Enjoys reading postcards and hanging out with friends in her spare time.

POINTS

Season 29 at Nebraska - Jan. 12
 Career 30 vs. Texas - March 11, 2003

STEALS

Season 5 vs. two teams
 Career 7 vs. Oklahoma State - March 5, 2003

FREE THROWS MADE

Season 11 vs. Illinois State - March 19
 Career 11 vs. Illinois State - March 19

REBOUNDS

Season 15 vs. Texas - Jan. 8
 Career 25 vs. Auburn - April 4, 2003

BLOCKED SHOTS

Season 3 vs. Texas - Jan. 8
 Career 5 vs. Arkansas-Pine Bluff - Dec. 5, 2002

3-POINTERS MADE

Season N/A
 Career N/A

ASSISTS

Season 8 vs. two teams
 Career 8 vs. two teams

FIELD GOALS MADE

Season 12 vs. two teams
 Career 12 vs. five teams

MINUTES

Season 49 at Nebraska - Jan. 12
 Career 49 at Nebraska - Jan. 12, 2005

2004 - 2005 GAME-BY-GAME

Opponent	Date	GS	Min	—TOTAL—			—3-PTS—			—REBOUNDS—				PF	FO	A	TO	Blk	Stl	Pts	Avg				
				FG	FGA	Pct	3FG	FGA	Pct	FT	FTA	Pct	Off									Def	Tot	Avg	
vs. LSU	11/14/04	*	35	8	14	.571	0	0	.000	5	7	.714	1	5	6	6.0	0	0	3	4	1	0	21	21.0	
INDIANA	11/19/04	*	30	4	15	.267	0	0	.000	8	10	.800	5	6	11	8.5	4	0	2	3	2	3	16	18.5	
at Mississippi State	11/23/04	*	34	6	22	.273	0	0	.000	1	4	.250	8	4	12	9.7	2	0	3	3	2	1	13	16.7	
SAM HOUSTON STATE	11/26/04	*	23	5	12	.417	0	0	.000	6	9	.667	7	4	11	10.0	0	0	1	0	0	2	16	16.5	
RICE	11/30/04	*	33	7	17	.412	0	0	.000	1	4	.250	4	6	10	10.0	4	0	3	2	2	1	15	16.2	
vs. Jackson State	12/04/04	*	28	5	8	.625	0	0	.000	0	0	.000	2	6	8	9.7	3	0	4	2	0	3	10	15.2	
at East Carolina	12/05/04	*	30	6	12	.500	0	0	.000	5	9	.556	1	3	4	8.9	2	0	1	2	1	3	17	15.4	
PENN STATE	12/11/04	*	20	5	13	.385	0	0	.000	1	2	.500	4	4	8	8.8	2	0	1	0	1	2	11	14.9	
at Washington	12/15/04	*	34	11	15	.733	0	0	.000	0	0	.000	1	8	9	8.8	1	0	1	1	2	2	22	15.7	
FLORIDA	12/19/04	*	33	5	10	.500	0	0	.000	5	8	.625	6	8	14	9.3	0	0	3	2	0	3	15	15.6	
MONTANA STATE	12/29/04	*	19	9	12	.750	0	0	.000	1	11	.000	3	1	4	8.8	1	0	0	0	1	4	19	15.9	
at Texas A&M	1/05/05	*	40	10	16	.625	0	0	.000	1	2	.500	3	9	12	9.1	1	0	4	1	1	4	21	16.3	
TEXAS	1/08/05	*	36	10	17	.588	0	0	.000	5	51	.000	6	9	15	9.5	4	0	1	1	3	3	25	17.0	
at Nebraska	1/12/05	*	49	12	20	.600	0	0	.000	5	10	.500	6	8	14	9.9	4	0	3	4	1	0	29	17.9	
OKLAHOMA	1/16/05	*	31	3	6	.500	0	0	.000	5	6	.833	2	5	7	9.7	2	0	1	2	1	0	11	17.4	
at Texas	1/22/05	*	38	5	15	.333	0	0	.000	3	4	.750	6	6	12	9.8	4	0	2	3	1	2	13	17.1	
TEXAS A&M	1/26/05	*	21	9	13	.692	0	0	.000	2	21	.000	3	6	9	9.8	3	0	1	2	0	0	20	17.3	
at Oklahoma State	1/29/05	*	34	8	15	.533	0	0	.000	0	2	.000	3	3	6	9.6	1	0	5	6	0	2	16	17.2	
KANSAS STATE	2/2/05	*	37	6	13	.462	0	0	.000	3	6	.500	4	9	13	9.7	3	0	1	5	0	2	15	17.1	
at Texas Tech	2/5/05	*	36	11	19	.579	0	0	.000	2	3	.667	2	8	10	9.8	2	0	1	2	0	2	24	17.5	
at Oklahoma	2/9/05	*	38	10	15	.667	0	0	.000	1	2	.500	1	3	4	9.5	3	0	2	2	2	1	21	17.6	
OKLAHOMA STATE	2/12/05	*	28	9	17	.529	0	0	.000	6	8	.750	5	5	10	9.5	1	0	6	0	0	5	24	17.9	
MISSOURI	2/16/05	*	22	6	10	.600	0	0	.000	0	0	.000	2	2	4	9.3	2	0	3	2	0	2	12	17.7	
IOWA STATE	2/19/05	*	40	7	11	.636	0	0	.000	2	3	.667	4	7	11	9.3	1	0	8	0	0	1	16	17.6	
at Kansas	2/23/05	*	38	7	9	.778	0	0	.000	4	41	.000	3	6	9	9.3	2	0	2	3	1	0	18	17.6	
at Colorado	2/26/05	*	29	2	8	.250	0	0	.000	10	12	.833	1	7	8	9.3	2	0	4	3	1	0	14	17.5	
TEXAS TECH	3/3/05	*	37	6	10	.600	0	0	.000	3	31	.000	2	10	12	9.4	1	0	4	3	1	1	15	17.4	
vs. Missouri	3/9/05	*	21	8	11	.727	0	0	.000	2	21	.000	4	5	9	9.4	3	0	3	1	0	2	18	17.4	
vs. Texas Tech	3/10/05	*	40	4	11	.364	0	0	.000	10	12	.833	3	10	13	9.5	3	0	8	1	0	1	18	17.4	
vs. Kansas State	3/12/05	*	37	8	16	.500	0	0	.000	2	5	.400	1	7	8	9.4	4	0	2	4	1	4	18	17.4	
vs. Illinois State	3/19/05	*	20	5	7	.714	0	0	.000	11	13	.846	4	2	6	9.3	0	0	0	3	0	0	21	17.5	
vs. Oregon	3/21/05	*	30	11	19	.579	0	0	.000	3	4	.750	5	3	8	9.3	2	0	2	4	1	5	25	17.8	
vs. Minnesota	3/26/05	*	39	12	21	.571	0	0	.000	2	3	.667	4	3	7	9.2	1	0	2	1	0	1	26	18.0	
vs. North Carolina	3/28/05	*	39	7	16	.438	0	0	.000	5	51	.000	3	8	11	9.3	1	0	6	3	0	4	19	18.1	
vs. LSU	4/3/05	*	40	9	22	.409	0	0	.000	3	4	.750	3	7	10	9.3	1	0	6	0	0	4	21	18.1	
vs. Michigan State	4/5/05	*	36	10	19	.526	0	0	.000	6	9	.667	4	5	9	9.3	1	0	4	3	0	0	26	18.4	
Totals			36	1175	266	506	.526	0	0	.000	129	183	.705	126	208	334	9.3	71	0	103	78	26	70	661	18.4

YOUNG'S CAREER STATS

Year	GP	GS	Min	Avg	—TOTAL—			—3-PTS—			—REBOUNDS—				PF	FO	A	TO	Blk	Stl	Pts	Avg			
					FG	FGA	Pct	3FG	FGA	Pct	FT	FTA	Pct	Off									Def	Tot	Avg
2002-03	35	22	974	27.8	218	387	.563	0	0	.000	61	113	.540	142	209	351	10.0	88	4	55	63	43	87	497	14.2
2003-04	35	35	1003	28.7	249	449	.555	0	1	.000	88	145	.607	120	182	302	8.6	103	2	75	77	29	87	586	16.7
2004-05	36	36	1175	32.6	266	506	.526	0	0	.000	129	183	.705	126	208	334	9.3	71	0	103	78	26	70	661	18.4
Totals	106	93	3152	29.7	733	1342	.546	0	1	.000	278	441	.630	388	599	987	9.3	262	6	233	218	98	244	1744	16.5

**Double-Doubles**

Season: 0

Career: 0

As a junior (2004-05): Jordan Davis averaged 2.8 points over four 2005 NCAA Tournament appearances for the Lady Bears ... Had three points and an assist in 11 minutes off the bench during Baylor's opening-round NCAA Tournament win over Illinois State, then netted eight points in five minutes of action against Oregon in round-two victory ... Did not play in Sweet 16 victory over Minnesota and saw less than a minute of work vs. North Carolina in regional final, but did not score ... Did not see any game action vs. LSU in semifinal game, saw one minute of play vs. Michigan State in the championship game ... Sparked Baylor's homecourt victory over then-No. 15 Kansas State with a season-high 17-point performance, just two off her career-high, in 31 minutes off the pine ... 10 of her 17 points against the Wildcats came in the first half, as she also recorded season-bests for rebounds (six), steals (two), 3-pointers made (two, tied), free throws made (nine) and attempted (10) as well as minutes played (31) in the contest ... No. 8 on BU's career 3-pointers made (75) chart, No. 8 on both its 3-point percentage (.349) and 3-point attempts (215) lists ... The Lady Bears are 12-0 all-time when she records a double-digit scoring performance; including 3-0 in 2004-05 ... In addition to her 17-point effort against Kansas State at Waco, she tallied 10 points vs. both Sam Houston State and Montana State ... An excellent foul shooter, she has missed only five free throws throughout her career, is 59-of-64 (.922) from the charity stripe all-told, including 23-of-24 (.958) as a junior ... Drained 11 consecutive free throws since her second-half miss against Kansas State at Waco to close the season ... Played 10 or more minutes in nine of 29 appearances on year with a high of 31 vs. Kansas State ... More than half (110) of her total minutes played (202) came during Big 12 regular-season action, despite the fact that she did not play in Baylor's first three conference contests.

As a junior (2003-04): Sat out season as a medical redshirt.

As a sophomore (2002-03): Played in all 35 games, started five ... Scored a career-high 19 points against Texas A&M, was 6-of-7 from the floor which included 4-of-5 from 3-point range ... Scored 18 points against Kansas, pouring in 6-of-8 treys ... Had eight double-digit scoring efforts ... Maintained the highest free throw percentage (.917) on the team, missing only two all season (22-of-24) ... Led the team in 3-pointers made with 49 ... The 49 treys rank No. 3 on BU's individual season best list ... Had career-high six assists vs. Texas Southern and a career-best seven rebounds against Arkansas-Pine Bluff ... Averaged 6.1 points, 19.1 minutes and 2.4 rebounds a game.

As a freshman (2001-02): Appeared in 27 games as a freshman ... Averaged 10.9 minutes a game ... Scored a then-

career-high 16 points in Baylor's victory over No. 10 Iowa State at Ames ... Saw a career-high 34 minutes of action in that game ... Was 5-of-9 from 3-point range against the Cyclones ... Dished out a career-high five assists vs. No. 4 Oklahoma in the championship game of the Big 12 Tournament ... Saw action in 12 conference games ... Posted the highest free throw percentage on the team at .875 (14-of-16) ... Ranked second on the squad in 3-point shooting percentage at .341 ... Earned Big 12 Rookie of the Week honor ... Named to the Big 12 Commissioner's Honor Roll for the fall semester.

Before Baylor: A very talented point guard who excelled at three different high schools playing at Slidell HS as a freshman, Valley View HS her sophomore and junior seasons and Celina HS as a senior ... Led all four teams to district championships ... With Jordan playing the point, her teams' four-year record was 123-19 for a .866 winning percentage ... Averaged 19.1 points, 7.0 assists and was an 86.3 percent free throw shooter in high school ... Earned many honors, but most notable were: three-time TABC All-State, three-time TGCA All-State, four-time TABC All-Region, three-time Academic All-District and three-time district MVP ... Played in 2001 TABC All-Star Basketball Game ... Also excelled in track where she was a regional and state qualifier in the high jump ... Earned second-team all-district in softball her junior season at Valley View HS ... Played summer basketball for Team Texas 18's ... Team Texas won the 2001 BCI National Championship that summer and finished fourth at the AAU Nationals ... Summer of 2000 Team Texas was third at the AAU Nationals.

Personal: Full name is Jordan Alane Davis ... Nickname is J ... Daughter of Troy and Sherry Davis of Celina, Texas ... Born May 15, 1983, in Denton, Texas ... Is the oldest of three children; sister Lindy is 18 and brother Seth is 16 ... Communication specialist major ... Selected Baylor over Clemson and Arkansas ... Chose Baylor because of Coach Mulkey and she liked all the players ... Likes to play tennis in her spare time.



Double-Doubles
Season: 0
Career: 0

As a sophomore (2004-05): Jones made her first career start against Indiana (Nov. 19) and played a season-high 18 minutes ... Played 10 or more minutes in eight games, but logged a total of just 41 minutes in 10 league appearances ... Over her last 17 games, she shot 10-of-25 (.400) from the floor and 2-of-2 (1.000) from 3-point range ... Did not play in Baylor's NCAA

Tournament victories over LSU, North Carolina or Minnesota ... In BU's second-round win over Oregon, she had a steal in four minutes off the bench ... Saw one minute of action versus Michigan State in the NCAA Championship game ... Did not score, but contributed a season-high three assists and two rebounds in 10 minutes of BU's opening-round NCAA Tournament victory over Illinois State ... Contributed six or more points three times on year (Sam Houston State, Florida, Montana State) ... Tallied a season-high seven points vs. both Florida and Montana State ... Snagged a season-high four rebounds in eight minutes off the pine against Texas A&M at Waco ... Enjoyed productive six-minute stint off the bench against Oklahoma State in Waco with two points, two rebounds and a pair of assists against the Cowgirls.

As a freshman (2003-04): Saw action in 34 of 35 games, missed only the Texas Tech game in Waco ... Played 15 minutes or more in first 10 games of the season and more than 20 minutes in six of first seven games ... Tallied a career-high 15 points against Nicholls State ... Played 23 minutes in her first two collegiate games (Mississippi State, Nicholls State) ... Turned in a good outing against Rice with an eight point, six rebound performance ... Was perfect from 3-point range against Rice, going 2-for-2 ... Led the team in assists against Penn State with four ... Dished out a career-high eight assists against Sam Houston State ... Played 25 minutes against Texas A&M, her previous high for a Big 12 game was 22 at Missouri ... Was impressive in Baylor's NCAA second round win over Florida, scored 11 of her 13 points in the first half, was 5-of-6 from the floor and 3-of-4 from the free throw line.

Before Baylor: Enrolled at Baylor after a standout four-year career at Ferriday High School in Ferriday, La. ... Averaged 23.0 points, 12.1 rebounds, 4.3 assists and 2.1 steals for her prep career under coach Lisa Abron ... Helped lead the Lady Trojans to a career record of 115-22 and a career district record of 32-2 which included three undefeated seasons ... Earned McDonald's All-American honorable mention in 2003 and *Street and Smith* All-American honorable mention in 2002 ... Led District 3-2A in scoring and rebounding for three years ... Three-time District 3-2A MVP and Louisiana Class 2A All-State first team three times ... Four-time Girls Athlete of the Year for District 3-2A ... Was a member of the Beta Club in high school and was impressive in the classroom as well ... Spent spare time volunteering in a nursing home.

Personal: Full name is Monique Elizabeth Jones ... Nickname is MJ ... Daughter of Doris Jones of Ferriday, La. ... Has a sister April ... Born Jan. 30, 1985, in Ferriday, La. ... Undecided on a major ... Would like to play in the WNBA ... Selected Baylor over Alcorn State, Southern Mississippi and Alabama-Birmingham ... Chose Baylor to help build a winning tradition and because of the friendly atmosphere ... Enjoys talking on the phone and hanging out with teammates.

#1 • MONIQUE JONES • JUNIOR • GUARD • FERRIDAY, LA

POINTS

Season 7 vs. two teams
 Career 15 vs. Nicholls State - Nov. 22, 2003

STEALS

Season 2 vs. Sam Houston State - Nov. 26
 Career 3 at UPR-Mayaguez - Dec. 20, 2003

FREE THROWS MADE

Season 2 vs. Sam Houston State - Nov. 26
 Career 3 vs. Nicholls State - Nov. 22, 2003

REBOUNDS

Season 4 vs. Texas A&M - Jan. 26
 Career 6 at Rice - Dec. 6, 2003

BLOCKED SHOTS

Season 1 vs. Indiana - Nov. 19
 Career 1 vs. Texas Tech - March 10, 2004

3-POINTERS MADE

Season 1 vs. two teams
 Career 2 vs. three teams

ASSISTS

Season 3 vs. Illinois State - March 19
 Career 8 vs. Sam Houston State - Jan. 2, 2004

FIELD GOALS MADE

Season 3 vs. two teams
 Career 5 vs. two teams

MINUTES

Season 18 vs. Indiana - Nov. 19
 Career 25 vs. Texas A&M - Feb. 28, 2004

2004 - 2005 GAME-BY-GAME

Opponent	Date	GS	Min	—TOTAL—			—3-PTS—			—REBOUNDS—				PF	FO	A	TO	Blk	Stl	Pts	Avg				
				FG	FGA	Pct	3FG	FGA	Pct	FT	FTA	Pct	Off									Def	Tot	Avg	
vs. LSU	11/14/04		11	1	1	11.000	0	0	.000	0	0	.000	1	1	2	2.0	1	0	0	0	0	2	2.0		
INDIANA	11/19/04	*	18	1	3	.333	0	0	.000	0	0	.000	0	2	2	2.0	2	0	0	1	1	0	2	2.0	
at Mississippi State	11/23/04		4	1	1	11.000	0	0	.000	0	0	.000	0	0	0	1.3	1	0	0	1	0	0	2	2.0	
SAM HOUSTON STATE	11/26/04		10	2	4	.500	0	0	.000	2	21	.000	0	1	1	1.3	0	0	2	3	0	2	6	3.0	
RICE	11/30/04		6	0	3	.000	0	1	.000	0	0	.000	0	0	0	1.0	0	0	0	0	0	0	0	2.4	
vs. Jackson State	12/04/04		14	2	5	.400	0	1	.000	0	0	.000	2	0	2	1.2	1	0	2	0	0	0	4	2.7	
at East Carolina	12/05/04		12	1	2	.500	0	0	.000	0	0	.000	0	0	0	1.0	0	0	1	0	0	0	2	2.6	
PENN STATE	12/11/04		6	0	2	.000	0	0	.000	0	0	.000	0	1	1	1.0	3	0	1	0	0	1	0	2.3	
at Washington	12/15/04		DNP																						
FLORIDA	12/19/04		10	3	4	.750	1	1	11.000	0	1	.000	0	0	0	0.9	1	0	1	1	0	0	7	2.8	
MONTANA STATE	12/29/04		15	3	7	.429	1	1	11.000	0	0	.000	0	1	1	0.9	1	0	2	2	0	1	7	3.2	
at Texas A&M	1/05/05		5	1	2	.500	0	0	.000	0	0	.000	0	1	1	0.9	1	0	2	1	0	0	2	3.1	
TEXAS	1/08/05		3	0	0	.000	0	0	.000	0	0	.000	0	0	0	0.8	0	0	0	0	0	0	0	2.8	
at Nebraska	1/12/05		DNP																						
OKLAHOMA	1/16/05		DNP																						
at Texas	1/22/05		4	1	2	.500	0	0	.000	0	0	.000	0	0	0	0.8	0	0	0	1	0	0	2	2.8	
TEXAS A&M	1/26/05		8	1	3	.333	0	0	.000	0	0	.000	1	3	4	1.0	3	0	1	3	0	0	2	2.7	
at Oklahoma State	1/29/05		3	0	2	.000	0	0	.000	0	0	.000	1	0	1	1.0	0	0	0	0	0	0	0	2.5	
KANSAS STATE	2/2/05		DNP																						
at Texas Tech	2/5/05		3	0	1	.000	0	0	.000	0	0	.000	0	0	0	0.9	0	0	0	0	0	0	0	2.4	
at Oklahoma	2/9/05		2	0	1	.000	0	0	.000	0	0	.000	0	0	0	0.9	0	0	0	0	0	0	0	2.2	
OKLAHOMA STATE	2/12/05		6	1	2	.500	0	0	.000	0	0	.000	2	0	2	0.9	0	0	2	1	0	0	2	2.2	
MISSOURI	2/16/05		3	0	0	.000	0	0	.000	0	0	.000	0	0	0	0.9	0	0	0	0	0	0	0	2.1	
IOWA STATE	2/19/05		DNP																						
at Kansas	2/23/05		DNP																						
at Colorado	2/26/05		4	0	0	.000	0	0	.000	0	0	.000	0	0	0	0.9	0	0	1	0	0	0	0	2.0	
TEXAS TECH	3/3/05		DNP																						
vs. Missouri	3/9/05		3	0	0	.000	0	0	.000	0	0	.000	0	1	1	0.9	0	0	1	1	0	0	0	1.9	
vs. Texas Tech	3/10/05		DNP																						
vs. Kansas State	3/12/05		0+	0	0	.000	0	0	.000	0	0	.000	0	0	0	0.8	0	0	0	0	0	0	0	1.8	
vs. Illinois State	3/19/05		10	0	1	.000	0	0	.000	0	0	.000	0	2	2	0.9	1	0	3	3	0	0	0	1.7	
vs. Oregon	3/21/05		4	0	0	.000	0	0	.000	0	0	.000	0	0	0	0.8	0	0	0	0	0	1	0	1.7	
vs. Minnesota	3/26/05		DNP																						
vs. North Carolina	3/28/05		DNP																						
vs. LSU	4/3/05		DNP																						
vs. Michigan State	4/5/05		1	0	0	.000	0	0	.000	0	0	.000	0	0	0	0.8	0	0	0	0	0	0	0	1.6	
Totals			1	165	18	46	.391	2	4	.500	2	3	.667	7	13	20	0.8	15	0	20	18	1	5	40	1.6

JONES' CAREER STATS

Year	GP	GS	Min	Avg	—TOTAL—			—3-PTS—			—REBOUNDS—				PF	FO	A	TO	Blk	Stl	Pts	Avg			
					FG	FGA	Pct	3FG	FGA	Pct	FT	FTA	Pct	Off									Def	Tot	Avg
2003-04	34	0	408	12.0	37	101	.366	6	23	.261	12	16	.750	10	45	55	1.6	35	0	44	39	1	18	92	2.7
2004-05	25	1	165	6.6	18	46	.391	2	4	.500	2	3	.667	7	13	20	0.8	15	0	20	18	1	5	40	1.6
Totals	59	1	573	9.7	55	147	.374	8	27	.296	14	19	.737	17	58	75	1.3	50	0	64	57	2	23	132	2.2



#4 • CHISA ONONIWU • SOPHOMORE • GUARD • HOUSTON, TEXAS

Chisa Ononiwu saw the first action of her collegiate career against Indiana and also appeared in the Lady Bears' victories over Sam Houston State, East Carolina, Penn State, Washington, Florida, Montana State, Texas A&M, Oklahoma State, Colorado, Illinois State, Oregon and Michigan State ... In Baylor's first-round NCAA win over Illinois State, she did not score in two minutes, but she did grab a rebound in a minute of action in its second-round victory over Oregon ... Saw one minute of action versus Michigan State in the championship game, registering one steal ... Had three points in three minutes at Colorado ... Tallied a career-high eight points and hauled down a career-best five rebounds in a career-long 12-minute stint vs. Montana State ... Also scored the first treys of her career with two vs. the Bobcats ... Shared rebounding honors with Steffanie Blackmon against Montana State ... Appeared in three league games--BU's homecourt victories over both Texas A&M and Oklahoma State, as well as its Big 12 title-clinching victory at Colorado ... Had a career-high two steals in three minutes of victory over the Cowgirls ... One of seven Lady Bears to attain a fall semester GPA of 3.0 or better, she landed a spot on both the fall and spring Big 12 Commissioner's Honor Roll for classroom performance.

Double-Doubles
Season: 0
Career: 0

POINTS
Season 8 vs. Montana State - Dec. 29
Career 8 vs. Montana State - Dec. 29, 2004

STEALS
Season 2 vs. Oklahoma State - Feb. 12
Career 2 vs. Oklahoma State - Feb. 12, 2005

FREE THROWS MADE
Season 2 at East Carolina - Dec. 5
Career 2 at East Carolina - Dec. 5

REBOUNDS
Season 5 vs. Montana State - Dec. 29
Career 5 vs. Montana State - Dec. 29, 2004

BLOCKED SHOTS
Season N/A
Career N/A

3-POINTERS MADE
Season 2 vs. Montana State - Dec. 29
Career 2 vs. Montana State - Dec. 29, 2004

ASSISTS
Season 1 vs. Jackson State - Dec. 4
Career 1 vs. Jackson State - Dec. 4, 2004

FIELD GOALS MADE
Season 3 vs. Montana State - Dec. 29
Career 3 vs. Montana State - Dec. 29, 2004

MINUTES
Season 12 vs. Montana State - Dec. 29
Career 12 vs. Montana State - Dec. 29, 2004

2004 - 2005 GAME-BY-GAME

Opponent	Date	GS	Min	---TOTAL---			---3-PTS---			---REBOUNDS---				PF	FO	A	TO	Blk	Stl	Pts	Avg				
				FG	FGA	Pct	3FG	FGA	Pct	FT	FTA	Pct	Off									Def	Tot	Avg	
vs. LSU	11/14/04		DNP																						
INDIANA	11/19/04		1	0	1	.000	0	1	.000	0	0	.000	0	0	0	0.0	1	0	0	0	0	0.0			
at Mississippi State	11/23/04		DNP																						
SAM HOUSTON STATE	11/26/04		8	1	5	.200	0	0	.000	0	0	.000	0	0	0	0.0	0	0	0	1	0	0	2	1.0	
RICE	11/30/04		DNP																						
vs Jackson State	12/04/04		4	0	1	.000	0	0	.000	0	0	.000	0	1	1	0.3	0	0	1	2	0	0	0	0.7	
at East Carolina	12/05/04		7	0	1	.000	0	0	.000	2	21	.000	0	1	1	0.5	1	0	0	0	0	1	2	1.0	
PENN STATE	12/11/04		3	0	0	.000	0	0	.000	0	0	.000	0	0	0	0.4	0	0	0	0	0	0	0	0.8	
at Washington	12/15/04		DNP																						
FLORIDA	12/19/04		3	0	1	.000	0	0	.000	0	0	.000	0	1	1	0.5	0	0	0	0	0	0	0	0.7	
MONTANA STATE	12/29/04		12	3	5	.600	2	3	.667	0	2	.000	2	3	5	1.1	2	0	0	3	0	1	8	1.7	
TEXAS A&M	1/26/05		2	0	0	.000	0	0	.000	0	0	.000	0	0	0	1.0	1	0	0	2	0	1	0	1.5	
TEXAS	1/08/05		DNP																						
at Nebraska	1/12/05		DNP																						
OKLAHOMA	1/16/05		DNP																						
at Texas	1/22/05		DNP																						
TEXAS A&M	1/26/05		DNP																						
at Oklahoma State	1/29/05		DNP																						
KANSAS STATE	2/2/05		DNP																						
at Texas Tech	2/5/05		DNP																						
at Oklahoma	2/9/05		DNP																						
OKLAHOMA STATE	2/12/05		3	1	11	.000	0	0	.000	0	0	.000	0	0	0	0.9	0	0	0	0	0	2	2	1.6	
MISSOURI	2/16/05		DNP																						
IOWA STATE	2/19/05		DNP																						
at Kansas	2/23/05		DNP																						
at Colorado	2/26/05		3	1	11	.000	1	11	.000	0	0	.000	0	0	0	0.8	0	0	0	1	0	0	3	1.7	
TEXAS TECH	3/3/05		DNP																						
vs. Missouri	3/9/05		DNP																						
vs. Texas Tech	3/10/05		DNP																						
vs. Kansas State	3/12/05		DNP																						
vs. Illinois State	3/19/05		2	0	0	.000	0	0	.000	0	0	.000	0	0	0	0.7	0	0	0	1	0	0	0	1.5	
vs. Oregon	3/21/05		1	0	0	.000	0	0	.000	0	0	.000	0	1	1	0.8	0	0	0	0	0	0	0	1.4	
vs. Minnesota	3/26/05		DNP																						
vs. North Carolina	3/28/05		DNP																						
vs. LSU	4/3/05		DNP																						
vs. Michigan State	4/5/05		1	0	0	.000	0	0	.000	0	0	.000	0	0	0	0.7	0	0	0	0	0	1	0	1.3	
Totals			0	50	6	16	.375	3	5	.600	2	4	.500	2	7	9	0.7	5	0	1	10	0	6	17	1.3

ONONIWU'S CAREER STATS

Year	GP	GS	Min	Avg	---TOTAL---			---3-PTS---			---REBOUNDS---				PF	FO	A	TO	Blk	Stl	Pts	Avg			
					FG	FGA	Pct	3FG	FGA	Pct	FT	FTA	Pct	Off									Def	Tot	Avg
2004-05	13	0	50	3.8	6	16	.375	3	5	.600	2	4	.500	2	7	9	0.7	5	0	1	10	0	6	17	1.3
Totals	13	0	50	3.8	6	16	.375	3	5	.600	2	4	.500	2	7	9	0.7	5	0	1	10	0	6	17	1.3



Double-Doubles
Season: 1
Career: 2

As a junior (2003-04): Scott started 35 of 36 games on the year (every game except the game vs. Oklahoma at Waco), including each of Baylor's last 21 (averaged 8.4 ppg over that stretch) ... In BU's six 2005 NCAA Tournament starts, she averaged 7.7 points and 5.5 rebounds per contest ... Had 12 points, three steals and two rebounds in 23 minutes against Illinois State in NCAA opening-round victory ... Did not score, but grabbed six rebounds and dished out four assists in 20 minutes vs. Oregon in second-round win ... Had two points, six rebounds and season-best tying four assists in 29 minutes vs. Minnesota ... Sparked the Lady Bears with an 18-point, nine-rebound (all defensive caroms), four-steal performance while playing the entire 40 minutes of the North Carolina victory ... Her four made 3-point buckets against the Tar Heels tied her career-best ... Had seven points, six rebounds and two steals in 37 minutes against LSU in the semifinals ... Was perfect from the floor (3-for-3) in the championship game vs. Michigan State, collected four rebounds, dished out three assists and added a steal ... Averaged 10.0 points and 2.3 assists in BU's Big 12 Tournament championship run, while shooting 50.0 percent (7-of-14) from 3-point range ... Tallied 16 points and three blocks vs. Missouri in Big 12 Tournament quarterfinals, then had two points and four assists vs. Texas Tech in semis before contributing 12 points and six rebounds in title game victory over Kansas State ... Over the last 11 games, she averaged 9.8 points while shooting 41.5 percent (22-of-53) from 3-point range and recording six double-digit scoring efforts ... Drained three or more treys 10 times on year (Baylor was 9-1 in those contests) with a high of four vs. Penn State, Missouri (Big 12 Tournament), Illinois State and North Carolina ... Her 49 treys rank as the fourth-best one-season total in school history ... Grabbed a career-best 13 rebounds at Mississippi State ... Tallied a career-high 20 points vs. Penn State ... Notched second career double-double with 15-point, 10-rebound performance at Washington, also tied then-career-high in blocks with three ... Baylor is 19-1 all-time when she scores in double-digits, including 12-1 in 2004-05 ... The Lady Bears' No. 4 scorer (7.8 ppg) on the season had eight double-digit scoring games in her last 16 starts ... BU's third-leading rebounder at 4.3 per game, she grabbed five or more boards 17 times with a pair of double-digit efforts to her credit ... No. 2 on the team and No. 9 in Big 12 with 69 steals (1.92 spg) ... Recorded 37 assists, 33 steals and just 11 turnovers over her last 15 games ... Finished No. 10 in Big 12 in 3-point shooting at 38.3 percent ... Ranks No. 7 on Baylor's career 3-point percentage list with a .355 mark and is No. 6 in made 3-pointers (76) and tied for No. 9 in 3-point attempts (214) ... Played a career-high tying 40 minutes of both Baylor's homecourt win over Texas Tech and its Elite Eight victory over North Carolina ... Played 30 or more minutes 11 times on year ... No. 4 on the squad in assists with 76, she collected three or more assists 14 times with a high of four nine times ... Credited with two or more steals 17 times with a high of five on three occasions ... Named to the Big 12 Commissioner's Honor Roll for the spring semester.

As a sophomore (2003-04): Played in 34 of the team's 35 games, sat out the Texas game in Waco ... Tied her then-career highs in scoring and rebounding with 11 points and six boards against Nicholls State ... Was a perfect 4-for-4 from the free throw line against Nicholls State ... Established new career highs in both scoring and rebounding against UPR-Mayaguez (12p-10r) ... Recorded her first career double-double with a 12-point, 10-rebound performance against UPR-Mayaguez ... Had a career-high five steals against Eastern Michigan ... Recorded first career start against N.C. State, started in eight games ... Was instrumental in Lady Bears' win over No. 15 Oklahoma when she came off the bench to tally nine points, six rebounds, two assists, two steals in a then-career-high 26 minutes ... Played all 40 minutes against Nebraska and scored a career-high 13 points, also tallied three blocks, three steals and nine rebounds ... Scored in double digits in six games ... Named to the spring Big 12 Commissioner's Honor Roll.

As a freshman (2002-03): Saw action in 21 of the team's 35 games ... Averaged 9.7 minutes, 2.7 points and 2.3 rebounds a game ... Scored 11 points against North Texas ... Hauled down a then-career-high six rebounds versus Texas A&M in the Big 12 Tournament.

Before Baylor: Scott averaged 18.0 points, 14 rebounds and 3 steals per game as a senior at Clear Brook High School ... Tore her ACL (left knee) midway through her senior season ... Still managed to be named third-team all-state by the Texas Girls Coaches Association ... Also earned District 24-5A MVP honors ... Led coach Pam Crawford's Lady Wolverines to the district championship in 2001-02 ... Also named all-state as a junior and TABC all-region that same year ... A 2002 McDonald's All-American nominee ... Excelled in the classroom as well ... Named a Texas Scholar, TGCA Academic All-State, National Scholar Athlete ... Active in PALs, FCA, Student Council and Spirit Club in high school.

Personal: Full name is Chameka Nicole Vanelle Scott ... Daughter of Charmaine Scott of Friendswood and Mario Scott ... Born May 9, 1984, in Houston ... Has two older brothers, Mario (22) and Adrian (21) ... Communication specialist major ... Plans on joining the advertising or broadcast journalism career field after graduation ... Selected Baylor over SMU, Kansas and Texas ... Chose Baylor because the atmosphere and personality the team showed and the school's academic reputation ... Volunteered at the Autumn Hills Retirement Home ... Likes to spend her spare time writing, shopping and sleeping.

#21 • CHAMEKA SCOTT • SENIOR • GUARD • FRIENDSWOOD, TEXAS

POINTS

Season 20 vs. Penn State - Dec. 11
 Career 20 vs. Penn State - Dec. 11, 2004

STEALS

Season 5 vs. three teams
 Career 5 vs. four teams

FREE THROWS MADE

Season 2 vs. eight teams
 Career 5 at Oklahoma State - March 3, 2004

REBOUNDS

Season 13 at Mississippi State - Nov. 23
 Career 13 at Mississippi State - Nov. 23, 2004

BLOCKED SHOTS

Season 4 vs. Texas - Jan. 8
 Career 4 vs. Texas - Jan. 8, 2005

3-POINTERS MADE

Season 4 vs. four teams
 Career 4 vs. four teams

ASSISTS

Season 4 vs. nine teams
 Career 6 at Kansas State - Jan. 27, 2004

FIELD GOALS MADE

Season 8 vs. Penn State - Dec. 11
 Career 8 vs. Penn State - Dec. 11, 2004

MINUTES

Season 40 vs. two teams
 Career 40 vs. three teams

2004 - 2005 GAME-BY-GAME

Opponent	Date	GS	Min	—TOTAL—			—3-PTS—			—REBOUNDS—				PF	FO	A	TO	Blk	Stl	Pts	Avg				
				FG	FGA	Pct	3FG	FGA	Pct	FT	FTA	Pct	Off									Def	Tot	Avg	
vs. LSU	11/14/04	*	37	4	7	.571	1	3	.333	0	0	.000	2	4	6	6.0	0	0	3	4	0	1	9	9.0	
INDIANA	11/19/04	*	28	0	2	.000	0	1	.000	2	4	.500	1	4	5	5.5	4	0	4	1	0	2	2	5.5	
at Mississippi State	11/23/04	*	29	2	11	.182	0	0	.000	2	3	.667	6	7	13	8.0	1	0	1	4	0	1	6	5.7	
SAM HOUSTON STATE	11/26/04	*	18	5	9	.556	3	3	1.000	0	0	.000	3	1	4	7.0	1	0	0	0	0	3	13	7.5	
RICE	11/30/04	*	30	1	6	.167	0	3	.000	0	0	.000	1	5	6	6.8	2	0	4	0	3	5	2	6.4	
vs. Jackson State	12/04/04	*	11	1	5	.200	0	2	.000	0	0	.000	0	0	0	5.7	1	0	2	0	0	0	2	5.7	
at East Carolina	12/05/04	*	12	0	2	.000	0	1	.000	0	0	.000	1	2	3	5.3	0	0	2	0	0	1	0	4.9	
PENN STATE	12/11/04	*	21	8	11	.727	4	5	.800	0	0	.000	4	2	6	5.4	2	0	2	0	0	0	20	6.8	
at Washington	12/15/04	*	34	5	8	.625	3	6	.500	2	21	0.000	1	9	10	5.9	1	0	4	1	3	3	15	7.7	
FLORIDA	12/19/04	*	23	2	7	.286	1	4	.250	2	21	0.000	1	1	2	5.5	3	0	1	3	1	2	7	7.6	
MONTANA STATE	12/29/04	*	15	2	5	.400	1	3	.333	0	0	.000	0	3	3	5.3	0	0	3	1	0	4	5	7.4	
at Texas A&M	1/05/05	*	17	1	2	.500	0	1	.000	0	0	.000	1	4	5	5.3	3	0	1	1	1	0	2	6.9	
TEXAS	1/08/05	*	27	4	7	.571	0	0	.000	0	0	.000	2	2	4	5.2	2	0	2	3	4	3	8	7.0	
at Nebraska	1/12/05	*	24	1	4	.250	1	4	.250	0	0	.000	0	2	2	4.9	4	0	1	1	0	1	3	6.7	
OKLAHOMA	1/16/05	*	29	4	8	.500	3	4	.750	0	0	.000	0	2	2	4.7	3	0	3	2	1	1	11	7.0	
at Texas	1/22/05	*	34	5	11	.455	3	7	.429	0	0	.000	3	4	7	4.9	2	0	1	1	0	1	13	7.4	
TEXAS A&M	1/26/05	*	24	2	5	.400	0	3	.000	1	2	.500	2	4	6	4.9	1	0	3	2	0	5	5	7.2	
at Oklahoma State	1/29/05	*	19	2	6	.333	0	3	.000	0	0	.000	0	0	0	4.7	0	0	0	0	0	2	4	7.1	
KANSAS STATE	2/2/05	*	2	0	1	.000	0	1	.000	0	0	.000	0	0	0	4.4	0	0	0	0	0	0	0	6.7	
at Texas Tech	2/5/05	*	27	3	6	.500	2	4	.500	0	0	.000	0	2	2	4.3	2	0	0	1	1	0	8	6.8	
at Oklahoma	2/9/05	*	33	3	11	.273	2	7	.286	2	21	0.000	1	4	5	4.3	1	0	2	3	0	1	10	6.9	
OKLAHOMA STATE	2/12/05	*	24	2	7	.286	1	4	.250	2	3	.667	0	3	3	4.3	0	0	4	0	1	2	7	6.9	
MISSOURI	2/16/05	*	27	5	12	.417	0	2	.000	0	0	.000	2	1	3	4.2	5	1	1	2	0	4	10	7.0	
IOWA STATE	2/19/05	*	28	1	3	.333	1	3	.333	0	0	.000	1	5	6	4.3	1	0	2	1	2	1	3	6.9	
at Kansas	2/23/05	*	36	5	10	.500	3	7	.429	1	2	.500	2	3	5	4.3	1	0	4	1	3	2	14	7.2	
at Colorado	2/26/05	*	24	6	11	.545	2	4	.500	2	3	.667	2	0	2	4.2	2	0	2	1	0	5	16	7.5	
TEXAS TECH	3/3/05	*	40	4	7	.571	1	3	.333	0	0	.000	3	0	3	4.2	1	0	4	1	1	4	9	7.6	
vs. Missouri	3/9/05	*	25	6	10	.600	4	6	.667	0	0	.000	0	0	0	4.0	2	0	1	1	3	1	16	7.9	
vs. Texas Tech	3/10/05	*	32	1	5	.200	0	2	.000	0	0	.000	0	1	1	3.9	2	0	4	0	1	1	2	7.7	
vs. Kansas State	3/12/05	*	37	4	10	.400	3	6	.500	1	4	.250	3	3	6	4.0	1	0	2	0	0	1	12	7.8	
vs. Illinois State	3/19/05	*	23	4	5	.800	4	5	.800	0	0	.000	0	2	2	3.9	0	0	0	0	0	3	12	7.9	
vs. Oregon	3/21/05	*	20	0	7	.000	0	3	.000	0	0	.000	3	3	6	4.0	0	0	4	1	0	1	0	7.7	
vs. Minnesota	3/26/05	*	29	1	7	.143	0	6	.000	0	1	.000	3	3	6	4.1	2	0	4	1	1	1	2	7.5	
vs. North Carolina	3/28/05	*	40	5	10	.500	4	8	.500	4	8	.500	0	9	9	4.2	3	0	1	0	2	4	18	7.8	
vs. LSU	4/3/05	*	37	2	5	.400	1	3	.333	2	21	0.000	3	3	6	4.3	1	0	1	2	1	2	7	7.8	
vs. Michigan State	4/5/05	*	18	3	3	1.000	1	1	1.000	0	0	.000	1	3	4	4.3	0	0	3	2	0	1	7	7.8	
Totals			35	934	104	246	.423	49	128	.383	23	38	.605	52	101	153	4.3	54	1	76	41	29	69	280	7.8

SCOTT'S CAREER STATS

Year	GP	GS	Min	Avg	—TOTAL—			—3-PTS—			—REBOUNDS—				PF	FO	A	TO	Blk	Stl	Pts	Avg			
					FG	FGA	Pct	3FG	FGA	Pct	FT	FTA	Pct	Off									Def	Tot	Avg
2002-03	21	0	203	9.7	21	67	.313	11	32	.344	4	13	.308	19	30	49	2.3	17	0	15	9	7	21	57	2.7
2003-04	34	8	489	14.4	59	143	.413	16	54	.296	20	27	.741	47	79	126	3.7	41	0	39	34	14	39	154	4.5
2004-05	36	35	934	25.9	104	246	.423	49	128	.383	23	38	.605	52	101	153	4.3	54	1	76	41	29	69	280	7.8
Totals	91	43	1626	17.9	184	456	.404	76	214	.355	47	78	.603	118	210	328	3.6	112	1	130	84	50	129	491	5.4

**Double-Doubles**

Season: 0

Career: 0

As a freshman (2004-05): One of the Big 12's top rookies, Angela Tisdale ranked among the league's freshman statistical leaders in assists (No. 2, 2.46 apg) and 3-point percentage (No. 4, .373) ... Averaged 1.8 points in 8.0 minutes of action in six NCAA Tournament appearances ... Had a point and an assist in 10 minutes against Illinois State in opening-round NCAA Tournament win, then contributed two points and an assist in three minutes of action vs. Oregon ... Celebrated her 20th birthday by recording five points, four assists and a steal in 12 minutes off the bench with no turnovers in Baylor's Sweet 16 victory over Minnesota ... Tallied a point and two assists in nine minutes against North Carolina ... Did not score, but had a rebound in six minutes vs. LSU in the semifinals ... Scored two points (both from the free throw line) and dished out an assist in eight minutes of action vs. Michigan State in the championship game ... Had seven points and three assists in 19 minutes off the bench at Colorado to help the Lady Bears clinch a share of their first Big 12 title ... Came off the pine to score 13 points vs. Indiana, all of which came in the first half, to record her first career double-figure scoring game in just her second contest as a Lady Bear ... Tallied second double-digit scoring effort with 11 points vs. Sam Houston State ... Made her first career start vs. Rice and played a career-high 36 minutes, one of 22 stints of 10 or more minutes she has recorded as a rookie ... Started nine games as a freshman with Baylor posting an 8-1 record in those contests ... Lady Bears were 13-1 on the year when she scored five or more points, 14-1 when she collected three or more assists ... Had a career-high nine assists at Texas A&M and doled out five or more five times (BU is 5-0 in those games) ... No. 3 on squad in assists with 86, the fifth-best one-season mark ever recorded by a Baylor freshman ... Collected at least one assist in 28 of 35 games, two or more in 19 outings ... Named to the Big 12 Commissioner's Honor Roll for both the fall and spring semesters.

Before Baylor: A four-year starter at Austin's Dell Valle High School where she played for Tawni Angel ... Averaged 27.0 points, 5.0 rebounds, 4.3 assists and 3.6 steals a game as a senior ... Led the Cardinals to a 28-6 record, the District 25-4A championship and the regional quarterfinals as a senior ... Named Centex Player of the Year by the *Austin American-Statesman* ... Earned TABC first-team all-state honors as a senior and second-team kudos as a junior ... Was first-team TABC all-region three seasons ... Earned first-team all-district honors all four years and was the District 25-4A MVP her senior season ... Also competed in track ... Good student as well as athlete, named academic all-state.

Personal: Full name is Angela Mechelle Tisdale ... Daughter of James and Evon Tisdale of Austin ... Born March 25, 1985, in Austin ... Is the youngest of five children, has a brother, James, and three sisters, Yolanda, La Tonya and Danielle ... Undecided on a major ... Selected Baylor over Texas State ... Chose Baylor because of the team's chemistry ... Would like to play in the WNBA and eventually coach at the collegiate level ... Likes to shop and go to the movies in her spare time.

#20 • ANGELA TISDALE • SOPHOMORE • GUARD • AUSTIN, TEXAS

POINTS

Season 13 vs. Indiana - Nov. 19
 Career 13 vs. Indiana - Nov. 19, 2004

STEALS

Season 4 vs. Montana State - Dec. 29
 Career 4 vs. Montana State - Dec. 29, 2004

FREE THROWS MADE

Season 5 vs. Rice - Nov. 30
 Career 5 vs. Rice - Nov. 30, 2004

REBOUNDS

Season 5 at Mississippi State - Nov. 23
 Career 5 at Mississippi State - Nov. 23, 2004

BLOCKED SHOTS

Season 1 vs. three teams
 Career 1 vs. three teams

3-POINTERS MADE

Season 3 vs. three teams
 Career 3 vs. three teams

ASSISTS

Season 9 at Texas A&M - Jan. 5
 Career 9 at Texas A&M - Jan. 5, 2005

FIELD GOALS MADE

Season 4 vs. three teams
 Career 4 vs. three teams

MINUTES

Season 36 vs. Rice - Nov. 30
 Career 36 vs. Rice - Nov. 30, 2004

2004 - 2005 GAME-BY-GAME

Opponent	Date	GS	Min	---TOTAL---			---3-PTS---			---REBOUNDS---				PF	FO	A	TO	Blk	Stl	Pts	Avg				
				FG	FGA	Pct	3FG	FGA	Pct	FT	FTA	Pct	Off									Def	Tot	Avg	
vs. LSU	11/14/04		1	0	0	.000	0	0	.000	0	0	0.0	0	0	0	0	0	0	0	0	0.0				
INDIANA	11/19/04		18	4	8	.500	3	4	.750	2	21	0.000	0	2	2	1.0	0	0	0	0	13	6.5			
at Mississippi State	11/23/04		34	1	3	.333	1	3	.333	3	5	.600	0	5	5	2.3	1	0	2	2	0	6	6.3		
SAM HOUSTON STATE	11/26/04		15	4	6	.667	3	3	1.000	0	1	.000	0	1	1	2.0	2	0	2	0	0	11	7.5		
RICE	11/30/04	*	36	1	5	.200	0	2	.000	5	8	.625	0	2	2	2.0	3	0	5	3	0	1	7	7.4	
vs. Jackson State	12/04/04	*	29	2	5	.400	1	3	.333	0	0	.000	0	0	0	1.7	2	0	8	3	0	2	5	7.0	
at East Carolina	12/05/04	*	32	3	6	.500	0	2	.000	0	0	.000	0	1	1	1.6	2	0	6	5	0	1	6	6.9	
PENN STATE	12/11/04	*	25	4	6	.667	1	3	.333	0	1	.000	0	2	2	1.6	3	0	7	2	0	0	9	7.1	
at Washington	12/15/04	*	18	1	3	.333	0	0	.000	0	0	.000	1	0	1	1.6	1	0	3	2	1	0	2	6.6	
FLORIDA	12/19/04	*	18	0	1	.000	0	0	.000	2	4	.500	0	3	3	1.7	2	0	1	4	1	1	2	6.1	
MONTANA STATE	12/29/04	*	17	3	3	1.000	1	1	1.000	2	3	.667	1	2	3	1.8	0	0	4	1	0	4	9	6.4	
at Texas A&M	1/05/05		29	1	4	.250	0	1	.000	2	21	0.000	0	0	0	1.7	4	0	9	6	0	0	4	6.2	
TEXAS	1/08/05	*	18	0	5	.000	0	1	.000	0	0	.000	0	2	2	1.7	0	0	3	0	1	0	0	5.7	
at Nebraska	1/12/05	*	18	2	5	.400	0	2	.000	1	2	.500	0	0	0	1.6	2	0	4	2	0	1	5	5.6	
OKLAHOMA	1/16/05		24	3	8	.375	3	5	.600	0	0	.000	0	1	1	1.5	2	0	4	2	0	0	9	5.9	
at Texas	1/22/05		22	1	5	.200	1	2	.500	1	4	.250	0	4	4	1.7	3	0	1	7	0	1	4	5.8	
TEXAS A&M	1/26/05		12	3	5	.600	1	2	.500	0	2	.000	0	1	1	1.6	3	0	3	4	0	0	7	5.8	
at Oklahoma State	1/29/05		13	0	3	.000	0	1	.000	1	2	.500	0	2	2	1.7	2	0	3	1	0	1	1	5.6	
KANSAS STATE	2/2/05		17	1	4	.250	1	3	.333	0	0	.000	0	1	1	1.6	1	0	1	3	0	2	3	5.4	
at Texas Tech	2/5/05		5	0	1	.000	0	1	.000	0	0	.000	0	2	2	1.7	0	0	1	1	0	0	0	5.2	
at Oklahoma	2/9/05		DNP																						
OKLAHOMA STATE	2/12/05		8	2	3	.667	0	1	.000	2	4	.500	0	0	0	1.6	1	0	1	0	0	1	6	5.2	
MISSOURI	2/16/05		9	0	1	.000	0	1	.000	0	1	.000	0	0	0	1.5	3	0	0	1	0	1	0	5.0	
IOWA STATE	2/19/05		7	1	2	.500	1	1	1.000	1	2	.500	0	1	1	1.5	1	0	2	0	0	1	4	4.9	
at Kansas	2/23/05	0+	0	0	0	.000	0	0	.000	0	0	.000	0	0	0	1.4	0	0	0	0	0	0	0	4.7	
at Colorado	2/26/05		19	2	4	.500	1	1	1.000	2	21	0.000	0	0	0	1.4	1	0	3	1	0	0	7	4.8	
TEXAS TECH	3/3/05		7	0	1	.000	0	0	.000	0	0	.000	0	0	0	1.3	0	0	0	1	0	0	0	4.6	
vs. Missouri	3/9/05		12	0	5	.000	0	1	.000	0	1	.000	0	4	4	1.4	1	0	1	3	1	1	0	4.4	
vs. Texas Tech	3/10/05		3	0	1	.000	0	1	.000	0	0	.000	0	2	2	1.4	0	0	0	0	0	0	0	4.3	
vs. Kansas State	3/12/05	0+	0	0	0	.000	0	0	.000	0	0	.000	0	0	0	1.4	0	0	0	0	0	0	0	4.1	
vs. Illinois State	3/19/05		10	0	4	.000	0	1	.000	1	2	.500	1	0	1	1.4	1	0	1	0	0	0	1	4.0	
vs. Oregon	3/21/05		3	0	1	.000	0	0	.000	2	21	0.000	0	0	0	1.3	1	0	1	0	0	0	2	4.0	
vs. Minnesota	3/26/05		12	2	3	.667	1	2	.500	0	0	.000	0	0	0	1.3	1	0	4	0	0	1	5	4.0	
vs. North Carolina	3/28/05		9	0	1	.000	0	1	.000	1	2	.500	0	0	0	1.2	0	0	2	1	0	0	1	3.9	
vs. LSU	4/3/05		6	0	1	.000	0	1	.000	0	0	.000	0	1	1	1.2	0	0	0	1	0	0	0	3.8	
vs. Michigan State	4/5/05		8	0	2	.000	0	1	.000	2	21	0.000	0	0	0	1.2	2	0	1	2	0	0	2	3.7	
Totals			9	514	41	115	.357	19	51	.373	30	54	.556	3	39	42	1.2	45	0	86	60	4	20	131	3.7

TISDALE'S CAREER STATS

Year	GP	GS	Min	Avg	---TOTAL---			---3-PTS---			---REBOUNDS---				PF	FO	A	TO	Blk	Stl	Pts	Avg			
					FG	FGA	Pct	3FG	FGA	Pct	FT	FTA	Pct	Off									Def	Tot	Avg
2004-05	35	9	514	14.7	41	115	.357	19	51	.373	30	54	.556	3	39	42	1.2	45	0	86	60	4	20	131	3.7
Totals	35	9	514	14.7	41	115	.357	19	51	.373	30	54	.556	3	39	42	1.2	45	0	86	60	4	20	131	3.7



Double-Doubles
Season: 0
Career: 0

As a sophomore (2004-05): Abiola Wabara started each of the Lady Bears' final 22 games ... Joined teammate Sophia Young on the Tempe All-Region team after averaging 8.0 points and 6.5 rebounds while playing physical defense in both games ... Registered a career-high 15 points, four rebounds and two assists in 24 minutes against Illinois State in Baylor's NCAA Tournament first-round victory ... Was 7-of-10 from the field against the Redbirds ... Shot 55.9 percent (19-of-34) in six NCAA contests while averaging 7.8 points and 4.8 rebounds in 22.3 minutes per game ... Had four points and five rebounds before fouling out in 22 minutes of play in second-round win over Oregon, then came back with nine points, a career-high tying seven rebounds and two steals in 23 minutes against Minnesota in Sweet 16 ... Against North Carolina in Tempe title game, she had seven points, six rebounds and a career-high tying three assists before fouling out in 26 minutes ... Had 12 points and five rebounds in 29 minutes vs. LSU in the semifinals ... Played 10 minutes in championship game vs. Michigan State where she hauled down two rebounds, dished out an assist and registered two steals ... Tallied nine points and six rebounds in a career-high 32 minutes vs. Missouri in Big 12 Tournament quarterfinals, then had five points and six rebounds against Texas Tech in the semifinals and two points and no rebounds in 17 minutes vs. Kansas State in championship tilt ... Had 10 points and three rebounds in 22 minutes against Texas Tech at Waco before fouling out for the second time on the year vs. the Lady Raiders ... Grabbed five or more rebounds in 14 games, including a career-high seven boards three times (Sam Houston State, Missouri and Minnesota) ... Against Florida and Montana State, she produced back-to-back double-figure scoring games for the first time in her career, a then-career-high 12 points vs. Florida and 10 against Montana State, a feat she later matched with efforts against Oklahoma (a then-career-high 14 points) in Waco and at Texas (11) ... Recorded seven double-digit scoring games on year (Baylor was 6-1 in those contests), including two in five 2005 NCAA Tournament contests ... Drained first 3-pointer in her first attempt of the season at Texas A&M ... BU is 20-2 all-time when she contributes five or more points; including 17-1 in 2004-05 ... Started 23 games as a sophomore (the season-opener vs. LSU and each of the last 22) ... Played 10 or more minutes in 28 of 36 games with 13 stints of 20-plus minutes and a high of 32 against Missouri in the Big 12 Tournament.

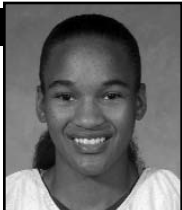
As a redshirt freshman (2003-04): Sat out the season's first seven games after playing in an Italian league that included pro players ... Saw her first action on Dec. 15 when the Lady Bears hosted

Southeastern Louisiana ... Had five points, a steal, a rebound and an assist in eight minutes of play in debut ... Tied her season-high in minutes played with 15 against Iowa State ... Started 11 games, including 10 of the last 11 ... Enjoyed her finest game of the season in Big 12 Tournament semifinals when she recorded then-career-highs in scoring (nine), rebounds (five), steals (three) and minutes played (21) against second-ranked Texas.

As a freshman (2002-03): Utilized a redshirt season.

Before Baylor: Came to Baylor from Parma, Italy ... Has two Baylor connections, an aunt and a cousin ... Her aunt, who now lives in Houston, attended Baylor's Truett Seminary where she earned her doctorate ... She called the basketball office to tell of her niece who was a basketball player in Italy ... On Abiola's next visit to the United States, she and her aunt visited Baylor and the basketball offices ... Soon after, the paperwork was begun for Abiola to attend Baylor ... She also has a cousin from Nigeria who is a junior at Baylor.

Personal: Full name is Nnena Abiola Wabara ... Nickname is Abi ... Daughter of Adebayo Wabara of Nigeria and Christianah Adebisi Roberts of Nigeria but currently resides in Parma, Italy ... Born Oct. 23, 1981, in Parma, Italy ... Has a younger brother Temitope David (21) ... Graduated from Liceo Scientifico G. Marconi School in 2000 ... Spanish major ... Plans on becoming a doctor ... Likes to paint in her spare time ... Speaks three languages (Italian, English and Nigerian) is learning Spanish and plans on taking up French.

**Double-Doubles**

Season: 0

Career: 0

As a sophomore (2004-05): First-year Lady Bear Latoya Wyatt scored in 24 of 33 appearances on the season ... Averaged 5.0 points and 12.8 minutes in Baylor's six NCAA Tournament victories while shooting 57.1 percent from the field and 57.1 percent from 3-point range ... In BU's first-round NCAA Tournament win over Illinois State, she had a career-high 13 points and three rebounds in 16 minutes off the bench ... Registered six points, two assists and career-high tying two steals in 20 minutes of second-round win over Oregon ... Tallied three points and an assist in 12 minutes off the bench against Minnesota in Sweet 16 victory ... Did not score in seven minutes vs. North Carolina, but had an assist ... Played just two minutes against LSU, but did not score ... Scored eight points and pulled down six rebounds in 20 minutes of action against Michigan State in the championship game ... In nine postseason games (six NCAA and three Big 12), she averaged 5.3 points in 13.0 minutes per contest while shooting 63.3 percent from the field and 66.7 percent from 3-point range ... Had a then-career-high tying 11 points, two steals and an assist in 20 minutes vs. Missouri in the Big 12 Tournament quarterfinals ... Was 5-for-5 from the field against the Tigers ... Did not score in the semifinals against Texas Tech, but had a rebound and an assist in 10 minutes, then had seven points and a rebound in 10 minutes vs. Kansas State in the championship game ... Tallied six points and a career-high tying two steals in six minutes off the bench in homecourt win over Oklahoma State ... Scored a Big 12 career-high eight points in 12 minutes of homecourt victory over Texas A&M ... Made lone start of season against Oklahoma at Waco, but did not score in three minutes of duty ... Played at least 10 minutes in 22 games ... Lady Bears were 16-0 on the year when she contributed four or more points, 3-0 when she scored in double-digits ... Scored a then-career-high 11 points against Florida ... Averaged 12.8 minutes and 5.0 points per outing on the season... Played a career-high 27 minutes at Nebraska and responded with five points and tied her career-highs in both rebounds (three) and assists (two) ... One of seven Lady Bears to attain a GPA of 3.0 or better for the fall semester, she was named to the fall Big 12 Commissioner's Honor Roll.

Before Baylor: Enrolled in Baylor after playing one season at Waco's McLennan Community College ... Averaged 18.0 points, 4.5 assists, 3.4 rebounds, 3.0 steals, 40 percent from the floor and 75

percent from the free throw line under coach Ricky Rhodes ... Helped lead the Highlassies to a 2003-04 record of 23-9 and the finals of the Region V Tournament ... Earned third-team NJCAA All-American and first-team all-region honors and was the conference's freshman and player of the year ... Played three seasons of basketball at L.D. Bell High School in Hurst, Texas, one for Diana Debord and two for Tina Matthews ... Named the District 6-5A Offensive Player of the Year and was an two-time district honorable mention ... Earned TABC All-Region honors and played in the TGCA All-Star game.

Personal: Full name is Latoya Delores Wyatt ... Daughter of George Wyatt and Sheila Wyatt ... Has an older brother, George and an older sister, Lamarr ... Born Aug. 20, 1985, in Hurst, Texas ... Undecided on a major ... Would like to play in the WNBA or overseas then become a winning coach ... Selected Baylor over Houston, Memphis, Oregon State, TCU and Indiana State ... Chose Baylor because of the tradition and how far the team advanced in the 2004 NCAA Tournament ... Hobbies include playing tennis.

#12 • LATOYA WYATT • JUNIOR • GUARD • FORT WORTH, TEXAS

POINTS

Season 13 vs. Illinois State - March 19
 Career 13 vs. Illinois State - March 19

STEALS

Season 2 vs. four teams
 Career 2 vs. four teams

FREE THROWS MADE

Season 2 vs. five teams
 Career 2 vs. five teams

REBOUNDS

Season 3 vs. five teams
 Career 3 vs. five teams

BLOCKED SHOTS

Season 1 vs. two teams
 Career 1 vs. two teams

3-POINTERS MADE

Season 1 vs. seven teams
 Career 1 vs. seven teams

ASSISTS

Season 2 vs. three teams
 Career 2 vs. three teams

FIELD GOALS MADE

Season 5 vs. two teams
 Career 5 vs. two teams

MINUTES

Season 27 at Nebraska - Jan, 12
 Career 27 at Nebraska - Jan, 12, 2005

2004 - 2005 GAME-BY-GAME

Opponent	Date	GS	Min	---TOTAL---			---3-PTS---			---REBOUNDS---			PF	FO	A	TO	Blk	Stl	Pts	Avg				
				FG	FGA	Pct	3FG	FGA	Pct	FT	FTA	Pct									Off	Def	Tot	Avg
vs. LSU	11/14/04		DNP																					
INDIANA	11/19/04		DNP																					
at Mississippi State	11/23/04		DNP																					
SAM HOUSTON STATE	11/26/04	12		1	3	.333	0	1	.000	0	0	.000	0	2	2	2.0	3	0	1	1	0	0	2	2.0
RICE	11/30/04	5		1	3	.333	0	0	.000	2	4	.500	0	0	0	1.0	0	0	0	0	0	1	4	3.0
vs. Jackson State	12/04/04	14		1	4	.250	0	2	.000	0	0	.000	0	0	0	0.7	1	0	1	2	0	1	2	2.7
at East Carolina	12/05/04	17		3	4	.750	1	2	.500	2	21	0.000	1	2	3	1.3	2	0	1	1	0	1	9	4.3
PENN STATE	12/11/04	24		2	10	.200	0	2	.000	0	0	.000	1	2	3	1.6	2	0	1	0	1	2	4	4.2
at Washington	12/15/04	14		1	4	.250	0	0	.000	1	2	.500	0	2	2	1.7	0	0	1	0	0	1	3	4.0
FLORIDA	12/19/04	14		4	7	.571	1	3	.333	2	4	.500	0	0	0	1.4	2	0	2	1	0	0	11	5.0
MONTANA STATE	12/29/04	13		3	4	.750	1	11	0.000	0	1	.000	0	2	2	1.5	2	0	0	0	0	0	7	5.3
at Texas A&M	1/05/05	19		2	3	.667	0	0	.000	2	3	.667	1	2	3	1.7	3	0	1	3	0	0	6	5.3
TEXAS	1/08/05	14		0	3	.000	0	0	.000	1	2	.500	0	0	0	1.5	2	0	1	2	0	0	1	4.9
at Nebraska	1/12/05	27		2	5	.400	1	2	.500	0	1	.000	2	1	3	1.6	3	0	2	1	0	0	5	4.9
OKLAHOMA	1/16/05	*	3	0	1	.000	0	0	.000	0	0	.000	0	0	0	1.5	0	0	0	0	0	0	0	4.5
at Texas	1/22/05	2		0	0	.000	0	0	.000	0	0	.000	0	0	0	1.4	0	0	0	0	0	0	0	4.2
TEXAS A&M	1/26/05	12		3	5	.600	1	11	0.000	1	11	0.000	0	0	0	1.3	2	0	0	1	0	1	8	4.4
at Oklahoma State	1/29/05	15		2	4	.500	0	0	.000	0	0	.000	0	1	1	1.3	1	0	0	1	0	1	4	4.4
KANSAS STATE	2/2/05	5		0	1	.000	0	0	.000	0	0	.000	0	0	0	1.2	1	0	0	0	0	0	0	4.1
at Texas Tech	2/5/05	5		0	2	.000	0	0	.000	0	0	.000	1	0	1	1.2	0	0	1	0	0	0	0	3.9
at Oklahoma	2/9/05	6		1	2	.500	0	0	.000	0	0	.000	0	1	1	1.2	2	0	0	0	0	1	2	3.8
OKLAHOMA STATE	2/12/05	6		3	3	1.000	0	0	.000	0	0	.000	0	1	1	1.2	1	0	0	0	0	2	6	3.9
MISSOURI	2/16/05	6		0	1	.000	0	0	.000	0	0	.000	0	0	0	1.1	1	0	0	0	0	0	0	3.7
IOWA STATE	2/19/05	12		2	4	.500	0	1	.000	0	1	.000	0	0	0	1.0	1	0	0	0	0	0	4	3.7
at Kansas	2/23/05	10		1	11	0.000	0	0	.000	0	0	.000	0	0	0	1.0	1	0	0	3	0	0	2	3.6
at Colorado	2/26/05	13		1	4	.250	0	0	.000	0	0	.000	2	0	2	1.0	1	0	1	1	0	1	2	3.6
TEXAS TECH	3/3/05	6		0	2	.000	0	0	.000	0	0	.000	0	0	0	1.0	0	0	0	1	1	0	0	3.4
vs. Missouri	3/9/05	20		5	5	1.000	1	11	0.000	0	0	.000	1	0	1	1.0	3	0	1	0	0	2	11	3.7
vs. Texas Tech	3/10/05	10		0	1	.000	0	0	.000	0	0	.000	1	0	1	1.0	0	0	1	1	0	0	0	3.6
vs. Kansas State	3/12/05	10		2	3	.667	1	11	0.000	2	21	0.000	0	1	1	1.0	0	0	0	0	0	0	7	3.7
vs. Illinois State	3/19/05	16		5	7	.714	3	31	0.000	0	0	.000	2	1	3	1.1	2	0	1	2	0	0	13	4.0
vs. Oregon	3/21/05	20		3	6	.500	0	1	.000	0	0	.000	1	0	1	1.1	1	0	2	1	0	2	6	4.1
vs. Minnesota	3/26/05	12		1	3	.333	1	2	.500	0	0	.000	0	0	0	1.0	0	0	1	1	0	0	3	4.1
vs. North Carolina	3/28/05	7		0	0	.000	0	0	.000	0	1	.000	0	0	0	1.0	0	0	1	3	0	0	0	3.9
vs. LSU	4/3/05	2		0	0	.000	0	0	.000	0	0	.000	0	0	0	1.0	1	0	0	1	0	0	0	3.8
vs. Michigan State	4/5/05	20		3	5	.600	0	1	.000	2	4	.500	1	5	6	1.1	4	0	0	1	0	0	8	3.9
Totals		1	391	52	110	.473	11	24	.458	15	28	.536	14	23	37	1.1	42	0	20	28	2	16	130	3.9

WYATT'S CAREER STATS

Year	GP	GS	Min	Avg	---TOTAL---			---3-PTS---			---REBOUNDS---			PF	FO	A	TO	Blk	Stl	Pts	Avg				
					FG	FGA	Pct	3FG	FGA	Pct	FT	FTA	Pct									Off	Def	Tot	Avg
2004-05	33	1	391	11.8	52	110	.473	11	24	.458	15	28	.536	14	23	37	1.1	42	0	20	28	2	16	130	3.9
Totals	33	1	391	11.8	52	110	.473	11	24	.458	15	28	.536	14	23	37	1.1	42	0	20	28	2	16	130	3.9

**Double-Doubles**

Season:

Career:

Before Baylor: Enrolled in Baylor after a stand-out career at Houston's Memorial High School. ... Participated in basketball and track for the Mustangs ... Played center on the varsity squad for three seasons under Bill Cronin and threw the shot put and discus in track for Danny Jones ... Averaged 19.4 points, 11.9 rebounds 4.9 blocks, 2.2 steals as a senior, also shot 73.0 percent from the free throw line and 59.9 percent from the floor ... Named District 18-5A MVP and first team all-district as a senior, also earned all-district honors as a junior ... Named second-team All-Houston Area, *Houston Chronicle* Athlete of the Week and played in the Greater Houston Area All-Star game ... Earned TGCA academic all-state kudos ... Named first team all-state in 2004-05 by Texas Basketball magazine after earning third-team honors in 2003-04 ... Averaged 19 points, 13 rebounds and six blocks per game as a junior .

Personal: Full name is Patricia Anne Abbott ... Nickname is Tricia ... Daughter of Jim and Jacquie Abbott of Houston, Texas ... Born Sept. 4, 1987, in Fort Wayne, Ind. ... Has two older siblings, Jimmy (24) and Beth (22) ... Undecided on a major ... Selected Baylor over Michigan, Rice, Tulane, Princeton and Missouri ... Chose Baylor because of the team, coaches and the atmosphere of the University ... Enjoys skiing, swimming and reading in her spare time ... Graduated cum laude from Memorial High School, is a member of the National Honor Society.

**Double-Doubles**

Season:

Career:

Jonesboro Surs Player of the Year in volleyball and basketball ... Earned Northeast Arkansas Athlete of the Year honors ... Graduated with honors (magna cum laude) from Jonesboro HS ... Ranked nationally in the top 100 by adidas.

Before Baylor: Excelled in both volleyball and basketball at Jonesboro High School ... Three-time all-state performer in volleyball as an outside hitter her sophomore and junior seasons ... Earned all-state honors in basketball under Michelle Birdsong as both a junior and a senior ...

Averaged 18.0 points, 9.0 rebounds, 2.5 steals and 2.0 blocks a game as a senior ... Named the

Personal: Full name is Rachel Lindsay Allison ... Daughter of Tim and Linda Allison of Jonesboro, Ark. ... Born March 30, 1987, in Jonesboro, Ark. ... Has two brothers, Josh (22) and Seth (16) ... Josh plays baseball at Arkansas State ... Father, Tim, played football at Arkansas State ... Mother, Linda, played basketball and was recognized in Hall of Honor at Arkansas State ... Majoring in health and human performance ... Would like to become an athletic trainer ... Selected Baylor over Arkansas, Arkansas State, Ole Miss, Louisiana Tech, Colorado, Texas A&M and Vanderbilt ... Chose Baylor because of Coach Mulkey-Roberstson's straight forward approach to recruiting and was also impressed with the members of the team ... Enjoys hanging out with her team and/or going home to see family in her spare time.



Double-Doubles

Season:

Career:

Before Baylor: Named TABC's Miss Basketball for 2005 ... 2005 TABC Class 5A Player of the Year ... Three-time 5A All-State honoree by both the TGCA and TABC ... Four-time District 22-5A first team honoree ... Two-time district MVP and four-time Humble HS MVP ... AAU and BCI All-American ... Rated fourth-best recruit in state by Texas Roundball magazine and top wing prospect by Texas Girls Basketball Report ... Ranked No. 3 in state by *Dallas Morning News* ... Averaged 17.0 points, 8.7 rebounds and 3.4 assists per game as a senior ... Posted averages of 17.5 points, 8.5 rebounds, 3.5 assists and 2.8 steals as a junior ... Tallied 2,231 points, 892 rebounds, 361 steals and 369 assists for her high school career under Coach Elizabeth Jesurun ... Led the Wildcats to the 5A state championship game, was named Most Outstanding Player of the championship game with her 24 point, six rebound, two block, two steal performance.

Personal: Full name is Jessica Denise Morrow ... Daughter of Edwin and Jocelyn Morrow of Humble ... Born Nov. 12, 1987, in Houston, Texas ... Undecided on a major ... Has an older sister Amber (24) and one brother Brandon (21) ... Selected Baylor over Texas, TCU, and Rice ... Chose Baylor because it was the right fit for her, she liked the players and coaches a lot and was impressed with how determined and well-coached the team is ... Enjoys playing basketball, shopping, talking on the phone and being with friends in her spare time.



Double-Doubles

Season:

Career:

Before Baylor: Averaged 32 points, 10 rebounds, four assists and two steals per game as a senior at Bay City High School ... Started four seasons of varsity ball for Blackcats coach Sherby Wilkerson ... Led Bay City to two District 24-4A championships and two runner-up finishes ... 2005 4A Player of the Year ... Two-time District MVP ... Two-time all-state selection by both TGCA

and TABC ... Ranked No. 10 in the state by Dallas Morning News ... Played in the TABC All-Star game ... Played four years on the Houston Hotshots AAU team with fellow Lady Bear freshman Jessica Morrow ... In 2004 the Hotshots won the BCI National Tournament and finished second in the AAU nationals ... Earned BCI and AAU All-American status twice and was named MVP at the BCI National tournament in Dallas in 2004.

Personal: Full name is Jhasmin Moneice Player ... Daughter of Johnny and Frankie Cole of Bay City, Texas ... Born Aug. 3, 1987, in Galveston, Texas ... Undecided on a major ... Would like to continue playing basketball after her collegiate career ends ... Selected Baylor over Rice, Texas A&M, Arkansas and Vanderbilt ... Enjoys watching television and playing Playstation in her spare time.

2004-2005 Baylor Lady Bears
 Baylor Lady Bears Combined Team Statistics (Final - NCAA Champions)
 All games

RECORD:	OVERALL	HOME	AWAY	NEUTRAL
ALL GAMES.....	(33-3)	(14-0)	(9-2)	(10-1)
CONFERENCE.....	(14-2)	(8-0)	(6-2)	(0-0)
NON-CONFERENCE.....	(19-1)	(6-0)	(3-0)	(10-1)

## Player	GP-GS	Min--Avg	---TOTAL---		---3-PTS---			---REBOUNDS---				PF	FO	A	TO	Blk	Stl	Pts	Avg	
			FG-FGA	Pct	3FG-FGA	Pct	FT-FTA	Pct	Off	Def	Tot									Avg
33 Young, Sophia.....	36-36	1175 32.6	266-506	.526	0-0	.000	129-183	.705	126	208	334	9.3	71	0	103	78	26	70	661	18.4
45 Blackmon, Steffanie	36-35	1141 31.7	195-421	.463	0-0	.000	163-211	.773	91	194	285	7.9	88	1	66	70	29	42	553	15.4
51 Niemann, Emily.....	36-0	857 23.8	121-247	.490	64-137	.467	45-58	.776	31	82	113	3.1	71	0	37	45	32	28	351	9.8
21 Scott, Chameka.....	36-35	934 25.9	104-246	.423	49-128	.383	23-38	.605	52	101	153	4.3	54	1	76	41	29	69	280	7.8
35 Wabara, Abiola.....	36-23	581 16.1	71-150	.473	1-3	.333	54-94	.574	43	87	130	3.6	91	4	32	52	18	25	197	5.5
02 Whitaker, Chelsea..	33-27	916 27.8	52-133	.391	0-7	.000	52-74	.703	21	75	96	2.9	51	2	170	91	4	48	156	4.7
12 Wyatt, Latoya.....	33-1	391 11.8	52-110	.473	11-24	.458	15-28	.536	14	23	37	1.1	42	0	20	28	2	16	130	3.9
20 Tisdale, Angela....	35-9	514 14.7	41-115	.357	19-51	.373	30-54	.556	3	39	42	1.2	45	0	86	60	4	20	131	3.7
22 Davis, Jordan.....	30-0	203 6.8	20-52	.385	11-31	.355	23-24	.958	4	17	21	0.7	19	0	12	13	2	4	74	2.5
05 Fox, Chanelle.....	29-13	229 7.9	19-45	.422	3-8	.375	16-22	.727	17	23	40	1.4	27	0	17	16	1	6	57	2.0
01 Jones, Monique.....	25-1	165 6.6	18-46	.391	2-4	.500	2-3	.667	7	13	20	0.8	15	0	20	18	1	5	40	1.6
04 Ononiwu, Chisa....	13-0	50 3.8	6-16	.375	3-5	.600	2-4	.500	2	7	9	0.7	5	0	1	10	0	6	17	1.3
25 Hamerly, Melanie...	19-0	86 4.5	9-24	.375	0-0	.000	0-1	.000	4	12	16	0.8	7	0	4	1	4	2	18	0.9
13 Jones, Victoria....	11-0	33 3.0	2-9	.222	0-2	.000	4-6	.667	0	3	3	0.3	3	0	4	7	0	0	8	0.7
TEAM.....									66	64	130	3.6	0		6					
Total.....	36	7275	976-2120	.460	163-400	.408	558-800	.698	481	948	1429	39.7	589	8	648	536	152	341	2673	74.2
Opponents.....	36	7275	776-2024	.383	162-545	.297	471-651	.724	386	797	1183	32.9	681	23	418	605	114	266	2185	60.7

TEAM STATISTICS	BU	OPP	DATE	OPPONENT	W/L	SCORE	ATTEND
SCORING.....	2673	2185	^11/14/04	vs #3 LSU	L	70-71	7387
Points per game.....	74.2	60.7	11/19/04	INDIANA	W	60-47	4746
Scoring margin.....	+13.6	-	11/23/04	at Mississippi State	W	66-49	2031
FIELD GOALS-ATT.....	976-2120	776-2024	11/26/04	SAM HOUSTON STATE	W	84-53	4645
Field goal pct.....	.460	.383	11/30/04	RICE	W	77-65	4311
3 POINT FG-ATT.....	163-400	162-545	\$12/04/04	vs Jackson State	W	73-56	737
3-point FG pct.....	.408	.297	\$12/05/04	at East Carolina	W	80-59	707
3-pt FG made per game..	4.5	4.5	12/11/04	PENN STATE	W	91-70	5504
FREE THROWS-ATT.....	558-800	471-651	12/15/04	at Washington	W	74-58	2611
Free throw pct.....	.698	.724	12/19/04	FLORIDA	W	89-62	6462
REBOUNDS.....	1429	1183	12/29/04	MONTANA STATE	W	92-47	6170
Rebounds per game.....	39.7	32.9	*1/05/05	at Texas A&M	W	64-50	4383
Rebounding margin.....	+6.8	-	*1/8/05	TEXAS	W	63-60	10322
ASSISTS.....	648	418	*1/12/05	at Nebraska	LO3	99-103	3192
Assists per game.....	18.0	11.6	*1/16/05	OKLAHOMA	W	78-68	7640
TURNOVERS.....	536	605	*1/22/05	at Texas	L	55-69	8400
Turnovers per game....	14.9	16.8	*1/26/05	TEXAS A&M	W	74-52	7470
Turnover margin.....	+1.9	-	*1/29/05	at Oklahoma State	W	67-65	3072
Assist/turnover ratio..	1.2	0.7	*2/2/05	KANSAS STATE	W	72-62	6592
STEALS.....	341	266	*2/5/05	at Texas Tech	W	52-49	15050
Steals per game.....	9.5	7.4	*2/9/05	at Oklahoma Sooners	W	73-72	4788
BLOCKS.....	152	114	*2/12/05	OKLAHOMA STATE	W	87-51	6667
Blocks per game.....	4.2	3.2	*2/16/05	MISSOURI	W	74-57	6095
WINNING STREAK.....	20	-	*2/19/05	IOWA STATE	W	82-77	8514
Home win streak.....	14	-	*2/23/05	at Kansas	W	70-60	1492
ATTENDANCE.....	95688	147606	*2/26/05	at Colorado	W	84-65	3057
Home games-Avg/Game....	14-6835	11-4435	*3/3/05	TEXAS TECH	W	79-69	10550
Neutral site-Avg/Game..	-	11-8984	%3/9/05	vs Missouri	W	70-52	5119
			%3/10/05	vs Texas Tech	W	58-57	4068
			%3/12/05	vs Kansas State	W	68-55	6108
			&3/19/05	vs Illinois State	W	91-70	3094
Baylor Lady Bears...	1281	1361	&3/21/05	vs Oregon	W	69-46	3010
Opponents.....	990	1160	+3/26/05	vs Minnesota	W	64-57	8213
			+3/28/05	vs North Carolina	W	72-63	3213
			#4/3/05	vs LSU	W	68-57	28937
			#4/5/05	vs Michigan State	W	84-62	28937

* = Big 12 Conference game
 ^ = State Farm Tip-Off Classic - Austin, Texas
 \$ = Lady Pirate Invitational - Greenville, N.C.
 % = Big 12 Tournament - Kansas City, Mo.
 & = NCAA Tournament - Seattle, Wash.
 + = NCAA Tournament - Tempe, Ariz.
 # = NCAA Tournament - Indianapolis

2004-2005 Baylor Lady Bears
 Baylor Lady Bears Combined Team Statistics (as of Mar 16, 2005)
 Conference games

RECORD:	OVERALL	HOME	AWAY	NEUTRAL
ALL GAMES.....	(14-2)	(8-0)	(6-2)	(0-0)
CONFERENCE.....	(14-2)	(8-0)	(6-2)	(0-0)
NON-CONFERENCE.....	(0-0)	(0-0)	(0-0)	(0-0)

## Player	GP-GS	Min--Avg	---TOTAL---		---3-PTS---		---FT-FTA---		----REBOUNDS----				PF	FO	A	TO	Blk	Stl	Pts	Avg
			FG-FGA	Pct	3FG-FGA	Pct	FT-FTA	Pct	Off	Def	Tot	Avg								
33 Young, Sophia.....	16-16	554 34.6	121-214	.565	0-0	.000	52-72	.722	53	103	156	9.8	36	0	48	39	12	25	294	18.4
45 Blackmon, Steffanie	16-16	558 34.9	89-195	.456	0-0	.000	86-111	.775	38	88	126	7.9	42	1	28	28	9	14	264	16.5
51 Niemann, Emily.....	16-0	393 24.6	49-109	.450	26-56	.464	22-29	.759	17	42	59	3.7	40	0	17	16	12	14	146	9.1
21 Scott, Chameka.....	16-15	415 25.9	48-111	.432	19-57	.333	8-12	.667	19	36	55	3.4	28	1	30	20	14	32	123	7.7
02 Whitaker, Chelsea..	16-14	459 28.7	31-75	.413	0-1	.000	37-51	.725	9	36	45	2.8	18	1	86	48	3	21	99	6.2
35 Wabara, Abiola.....	16-13	270 16.9	34-71	.479	1-1	1.000	22-36	.611	17	44	61	3.8	44	2	13	25	10	8	91	5.7
20 Tisdale, Angela.....	15-2	208 13.9	16-51	.314	8-22	.364	10-21	.476	0	14	14	0.9	23	0	35	29	1	8	50	3.3
12 Wyatt, Latoya.....	16-1	161 10.1	17-41	.415	2-4	.500	4-8	.500	6	6	12	0.8	19	0	6	13	1	6	40	2.5
22 Davis, Jordan.....	13-0	110 8.5	8-25	.320	4-14	.286	11-12	.917	3	11	14	1.1	11	0	4	6	0	2	31	2.4
05 Fox, Chanelle.....	13-3	82 6.3	7-17	.412	2-3	.667	6-8	.750	7	9	16	1.2	16	0	8	3	0	2	22	1.7
04 Ononiwu, Chisa.....	3-0	8 2.7	2-2	1.000	1-1	1.000	0-0	.000	0	0	0	0.0	1	0	0	3	0	3	5	1.7
01 Jones, Monique.....	10-0	41 4.1	4-13	.308	0-0	.000	0-0	.000	4	4	8	0.8	4	0	6	6	0	0	8	0.8
25 Hamerly, Melanie...	5-0	11 2.2	0-2	.000	0-0	.000	0-0	.000	0	1	1	0.2	0	0	0	0	1	0	0	0.0
13 Jones, Victoria....	2-0	5 2.5	0-2	.000	0-0	.000	0-0	.000	0	1	1	0.5	0	0	0	1	0	0	0	0.0
TEAM.....									32	19	51	3.2	0		2					
Total.....	16	3275	426-928	.459	63-159	.396	258-360	.717	205	414	619	38.7	282	5	281	239	63	135	1173	73.3
Opponents.....	16	3275	356-870	.409	80-218	.367	237-318	.745	145	350	495	30.9	312	13	174	255	51	107	1029	64.3

TEAM STATISTICS	BU	OPP	DATE	OPPONENT	W/L	SCORE	ATTEND
SCORING.....	1173	1029	*1/05/05	at Texas A&M	W	64-50	4383
Points per game.....	73.3	64.3	*1/8/05	TEXAS	W	63-60	10322
Scoring margin.....	+9.0	-	*1/12/05	at Nebraska	LO3	99-103	3192
FIELD GOALS-ATT.....	426-928	356-870	*1/16/05	OKLAHOMA	W	78-68	7640
Field goal pct.....	.459	.409	*1/22/05	at Texas	L	55-69	8400
3 POINT FG-ATT.....	63-159	80-218	*1/26/05	TEXAS A&M	W	74-52	7470
3-point FG pct.....	.396	.367	*1/29/05	at Oklahoma State	W	67-65	3072
3-pt FG made per game..	3.9	5.0	*2/2/05	KANSAS STATE	W	72-62	6592
FREE THROWS-ATT.....	258-360	237-318	*2/5/05	at Texas Tech	W	52-49	15050
Free throw pct.....	.717	.745	*2/9/05	at Oklahoma Sooners	W	73-72	4788
REBOUNDS.....	619	495	*2/12/05	OKLAHOMA STATE	W	87-51	6667
Rebounds per game.....	38.7	30.9	*2/16/05	MISSOURI	W	74-57	6095
Rebounding margin.....	+7.8	-	*2/19/05	IOWA STATE	W	82-77	8514
ASSISTS.....	281	174	*2/23/05	at Kansas	W	70-60	1492
Assists per game.....	17.6	10.9	*2/26/05	at Colorado	W	84-65	3057
TURNOVERS.....	239	255	*3/3/05	TEXAS TECH	W	79-69	10550
Turnovers per game....	14.9	15.9	* = Big 12 Conference game				
Turnover margin.....	+1.0	-	^ = State Farm Tip-Off Classic - Austin, Texas				
Assist/turnover ratio..	1.2	0.7					
STEALS.....	135	107					
Steals per game.....	8.4	6.7					
BLOCKS.....	63	51					
Blocks per game.....	3.9	3.2					
WINNING STREAK.....	11	-					
Home win streak.....	8	-					
ATTENDANCE.....	63850	43434					
Home games-Avg/Game....	8-7981	8-5429					
Neutral site-Avg/Game..	-	0-0					

SCORE BY PERIODS:	1st	2nd	OT	OT2	OT3	Total
Baylor Lady Bears...	548	594	12	7	12	- 1173
Opponents.....	440	554	12	7	16	- 1029