

THE UNIVERSITY

92-93	BAYLOR UNIVERSITY
94-95	BAYLOR ATHLETICS
96-97	FLOYD CASEY STADIUM
98-100	TRADITION
101	UNIVERSITY ADMINISTRATION
102	DIRECTOR OF ATHLETICS IAN MCCAIV
103	HEAD COACHES
104-106	ATHLETICS ADMINISTRATION
107-108	BIG 12 CONFERENCE

BAYLOR





BAYLOR UNIVERSITY

TEXAS' OLDEST
UNIVERSITY IN
CONTINUOUS
OPERATION

Baylor, a private Christian university and a nationally ranked liberal arts institution, is the kind of place where the future head of a Fortune 500 company sits alongside those who will found a missionary school in Africa or become a governor of Texas, a professional athlete or a cardiac surgeon overseeing one of the most prestigious medical centers. The Carnegie Foundation for the Advancement of Teaching classifies Baylor as a research university with "high research activity." This blends with Baylor's international reputation for educational excellence built upon the faculty's commitment to teaching, scholarship and interdisciplinary research to produce outstanding graduates.





WHO WE ARE

Chartered in 1845 by the Republic of Texas through the efforts of Baptist pioneers, Baylor is the state's oldest continually operating university. While 80 percent of the student body comes from Texas, the 735-acre campus in Waco welcomes students from all 50 states and 70 countries.

2006 ENROLLMENT

Mean SAT score: 1213

Mean ACT: 25

- 70 percent of entering freshmen were in the top 25 percent of their high school graduating class
- 80 percent of first-year students are from Texas
- 84 percent of Baylor students receive some form of financial assistance
- 14,040 total enrollment (11,831 undergraduate and 2,209 graduate/professional students)

ACADEMICS

- 150 baccalaureate, 76 master's, 22 doctoral programs and juris doctor degree programs
- More than 50 percent of Baylor undergraduates pursue post-graduate degrees

ACADEMIC UNITS

- College of Arts & Sciences
- School of Business
- School of Education
- School of Engineering & Computer Science
- Graduate School
- Honors College
- Law School
- School of Music
- Louise Herrington School of Nursing
- George W. Truett Theological Seminary
- School of Social Work

WHAT WE DO

CAMPUS LIFE EXPERIENCE

- 320-plus clubs and organizations, including 25 national and local sororities and fraternities and the first collegiate chapter of Habitat for Humanity
- Among the 11 percent of U.S. universities with a Phi Beta Kappa chapter
- Baylor students, faculty and staff annually volunteer more than 150,000 hours of local community service
- 38 percent of students live on campus in 12 residence halls

HOW WE SHINE

- Baylor consistently ranks in the top 100 national doctoral-granting universities in "America's Best Colleges" by *U.S. News & World Report*
- Graduate programs in law, business, biological sciences and health disciplines are nationally ranked in the 2008 "America's Best Graduate Schools" by *U.S. News*
- Hankamer School of Business ranks among the nation's top 25 private undergraduate business school programs
- *Men's Fitness* magazine named Baylor one of the Top 25 Fittest Colleges in America in 2006
- Engineering consistently ranks in the top 25 of non-doctoral engineering programs

BAYLOR AT A GLANCE

Founded	Chartered in 1845 by the Republic of Texas, the oldest continuously operated university in Texas
Affiliation	Baptist General Convention of Texas
Campus	735 acres in Waco, Texas, with an area population of 215,000
Enrollment	14,040 students including 11,831 undergraduate and 2,209 graduate/professional students
Student/faculty ratio	16:1
Average class size	30
Student organizations	More than 300 clubs and organizations; 25 national and local sororities and fraternities
Technology	Named as one of the "most unwired" universities by Intel; AirBear, our wireless network, covers nearly all of campus
Volunteer service	Baylor was first to establish a collegiate chapter of Habitat for Humanity (1978); Baylor students give more than 150,000 hours in volunteer service each year locally
Website	www.baylor.edu
Admissions	1.800.BAYLOR.U — option 1-1

THE VISION

In September 2001, the Baylor University Board of Regents adopted a bold 10-year Vision called Baylor 2012. Within the course of a decade, Baylor intends to enter the top tier of American universities while reaffirming its distinctive Christian mission. Substantial progress has been made on several key initiatives. We have increased scholarship funds, lowered the student-faculty ratio, added a 600-person residential village and begun construction on a 700-person residential village on campus, and built a state-of-the-art \$100 million sciences building and a new museum studies complex.

DID YOU KNOW?

TOP 15%

Baylor ranks in the top 15 percent of colleges and universities participating in the National Merit Scholars program.

SIC'EM

Baylor has won 25 Big 12 championships in seven sports since 1998. In 81 years of membership in the Southwest Conference, Baylor won 28 titles.

LEGALLY SPEAKING

Baylor law students had a 100 percent passing rate on the February 2007 Texas State Bar Exam, 21 percent higher than the state average.

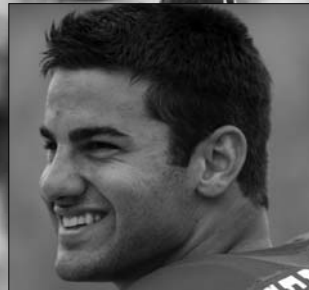
THE DATA IS IN

Baylor students report themselves significantly more satisfied with almost every aspect of their undergraduate experience (approximately 90 percent of the items measured) than students at other private institutions.

The best way to learn about Baylor and all that it has to offer is through a personal visit. Call 254.710.2407 to schedule a campus tour.



UMPHREY LAW CENTER



BAYLOR ATHLETICS ON THE NCAA NATIONAL STAGE

- 2007 Softball Women's College World Series Participants
- 2007 Men's Tennis National Semifinalists
- 2006 Men's Tennis National Semifinalists
- 2006 Men's Indoor Track & Field — Eighth Place
- 2005 Women's Basketball National Champions
- 2005 Men's Tennis National Runners-Up
- 2005 Baseball National Semifinalists
- 2004 Men's Tennis National Champions
- 2004 Men's Outdoor Track & Field — Seventh Place
- 2004 Men's Indoor Track & Field — Sixth Place
- 2003 Men's Tennis National Quarterfinalists
- 2001 Men's Outdoor Track & Field — Third Place
- 1999 Men's Tennis National Quarterfinalists
- 1999 Women's Indoor Track & Field — Fourth Place
- 1998 Men's Indoor Track & Field — Seventh Place
- 1998 Women's Cross Country — Eighth Place
- 1996 Men's Indoor Track & Field — Fourth Place
- 1995 Men's Outdoor Track & Field — Eighth Place

- 1995 Men's Indoor Track & Field — Seventh Place
- 1991 Men's Indoor Track & Field — Seventh Place
- 1990 Men's Outdoor Track & Field — Third Place
- 1990 Men's Indoor Track & Field — Seventh Place
- 1989 Men's Indoor Track & Field — Fourth Place
- 1988 Men's Indoor Track & Field — Seventh Place
- 1985 Men's Outdoor Track & Field — Third Place
- 1985 Men's Indoor Track & Field — Third Place
- 1978 Baseball College World Series Participants
- 1977 Baseball College World Series Participants
- 1981 Football Cotton Bowl Participants
- 1975 Football Cotton Bowl Participants
- 1956 Football Sugar Bowl Champions
- 1952 Football Orange Bowl Participants
- 1948 Baseball National Semifinalists
- 1948 Men's Basketball National Runners-Up
- 1947 Men's Basketball Final Four Participants

**2006-2007 HIGHLIGHTS****OCT. 7, 2006 — BOULDER, COLO. FOOTBALL**

Joe Pawelek's leaping interception in the end zone in the third overtime clinched Baylor's 34-31 victory at Colorado. The Bears scored on fourth-and-goal to force the third overtime and then kicked a field goal in their possession in the third extra period. Ryan Havens' 22-yarder proved to be the difference in the game.

OCT. 21, 2006 — FLOYD CASEY STADIUM FOOTBALL

Baylor scored 19 unanswered points in the game's final nine minutes, 22 seconds, for an improbable 36-35 victory over Kansas on Homecoming. The Bears erased an 18-point deficit for the largest fourth-quarter comeback in program history. Shawn Bell, who established school records for passing yards and pasing touchdowns, connected with Dominique Zeigler for a 10-yard, game-winning touchdown pass with 68 seconds remaining.

OCT. 27, 2006 — FERRELL CENTER VOLLEYBALL

Taylor Barnes had a triple-double and was one of five Baylor players with at least 10 kills as the Bears rallied from a two-game deficit to defeat 16th-ranked Missouri in five games. After dropping game one 30-26 and being edged 33-31 in game two, Baylor stormed back for wins of 30-22, 30-23 and 15-10 to take the match.

NOV. 20, 2006 — TERRE HAUTE, IND. WOMEN'S CROSS COUNTRY

Nicole Jones paced Baylor with a 66th-place individual finish as the Bears finished 29th in the team standings at the NCAA National Championship. It marked the fourth consecutive year in which Baylor placed in the top 30 at the national meet.

NOV. 21, 2006 — FERRELL CENTER WOMEN'S BASKETBALL

Baylor quickly erased a halftime deficit and never trailed again, en route to a 64-60 victory over ninth-ranked Louisiana State. Bernice Mosby tallied 21 points and 17 rebounds to lead the Lady Bears to the victory in front of 7,503 fans. LSU pulled to within one point at the 1:45 mark, but Baylor held the Tigers without a field goal the rest of the way.

DEC. 7, 2006 — LAKE BUENA VISTA, FLA. FOOTBALL

Daniel Sepulveda became the first two-time winner of the Ray Guy Award as the nation's top collegiate punter. Sepulveda, who also won the award in 2004, joined Mike Singletary as the only Baylor players and one of only 13 players in NCAA Division I history to earn a major national award twice. Sepulveda went on to earn consensus first-team All-America and first-team Academic All-America honors; he also was selected in the fourth round of the NFL Draft by the Pittsburgh Steelers.

FEB. 18, 2007 — FERRELL CENTER WOMEN'S BASKETBALL

Four Lady Bears scored in double figures, including Latara Darrett's 17-point effort off the bench, as Baylor routed Texas 71-56 in front of 8,360 fans. It marked Baylor's third straight win over Texas and the Lady Bears' fourth in the last five meetings.

MARCH 3, 2007 — FERRELL CENTER MEN'S BASKETBALL

Curtis Jerrells scored 21 points, and Henry Dugat added 20 points, as Baylor closed out the regular season with an 86-82 victory over Oklahoma State. The victory gave the Bears a 13-5 record at home, including a 4-4 mark at the Ferrell Center in Big 12 Conference play.

MARCH 8, 2007 — OKLAHOMA CITY, OKLA. MEN'S BASKETBALL

Eleventh-seeded Baylor shot 63 percent from the field and hit nine of 15 shots from behind the 3-point line to rout sixth-seeded Missouri 97-83 in the first round of the Big 12 Championship. It was Baylor's first win at the event since reaching the 2001 semifinals. Curtis Jerrells and Henry Dugat led the offensive explosion with 31 and 25 points, respectively.

MARCH 10, 2007 — FAYETTEVILLE, ARK. TRACK & FIELD

Baylor's men's 4x400-meter relay team clocked the world's fastest time of the year to date for its seventh indoor national championship. It was Baylor's first title in the event since 2004. The men's team finished tied for 10th at the NCAA Championship, while the women's team tied for 50th.

APRIL 20, 2007 — HEART O' TEXAS FAIR COMPLEX EQUESTRIAN

Baylor's western team upset two nationally ranked opponents en route to a fifth-place finish at the Varsity National Equestrian Championships, hosted by Baylor. The English riders finished eighth, giving Baylor an eighth-place national team finish.

MAY 5, 2007 — GETTERMAN STADIUM SOFTBALL

Chelsi Lake scored on a passed ball in the bottom of the 10th to give Baylor a 5-4 victory over sixth-ranked Texas A&M. More importantly, the win gave the Lady Bears their first-ever Big 12 Conference title. The game, played in front of a school-record 1,455 fans, was one of the greatest in program history as Baylor tied the game in both the seventh and ninth innings before pulling out the dramatic victory in the 10th.

MAY 12, 2007 — ANN ARBOR, MICH. WOMEN'S GOLF

Baylor carded a third-round 315 to place 14th at the NCAA Central Regional. It marked the eighth consecutive season in which Baylor's women's golf team participated in NCAA postseason play.

MAY 13, 2007 — BAYLOR TENNIS CENTER WOMEN'S TENNIS

In a match that featured more than two hours of weather delays, Baylor defeated Texas A&M 4-1 in the regional championship match to advance to the NCAA Championship for the fourth time in school history and third straight season. Klara Zrustova clinched the match for the Bears with a 6-2, 6-3 victory at No. 6 singles.

MAY 18, 2007 — BAYLOR BALLPARK BASEBALL

Despite giving up six first-inning runs, Baylor rallied to defeat Kansas State 9-8 in the first game of the season-ending three-game series. Beamer Weems' two-out RBI single in the eighth proved to be the game winner. The Bears went on to sweep the Wildcats, starting a key six-game winning streak.

MAY 19, 2007 — ATHENS, GA. MEN'S TENNIS

Baylor blanked North Carolina State 4-0 in the national quarterfinals at the NCAA Team Championship. The victory propelled the Bears to the national semifinals for the fourth consecutive season. After the Bears claimed the doubles point in just 47 minutes, Michal Kokta, Dominik Mueller and Denes Lukacs won singles points to give Baylor the match.

MAY 19, 2007 — SUGAR GROVE, ILL. MEN'S GOLF

Baylor shot a 317 in the third round to place 18th at the NCAA Central Regional. It marked the 10th consecutive season in which Baylor's men's golf team participated in NCAA postseason play.

MAY 26, 2007 — GETTERMAN STADIUM SOFTBALL

After falling to 10th-ranked Michigan 3-0 earlier in the day, Baylor rebounded for a 4-0 victory in the third and deciding game of the NCAA Waco Super Regional to clinch the program's first-ever trip to the Women's College World Series. Kirsten Shortridge got the game started on the right foot for Baylor, lacing a two-run homer in the first. The Lady Bears added two runs in the second, and Lisa Ferguson tossed a five-hit shutout for the win.

MAY 26, 2007 — OKLAHOMA CITY, OKLA. BASEBALL

Kendal Volz established a Big 12 Championship record with 13 strikeouts as Baylor defeated Oklahoma 7-6 to reach the title game for the fifth time since 1999. The victory proved to be the deciding factor in Baylor reaching NCAA Tournament play for the ninth time in the last 10 seasons, one of only 15 Division I programs with that on its resumé.

JUNE 9, 2007 — SACRAMENTO, CALIF. TRACK & FIELD

Reggie Witherspoon, LeJerald Betters, Kevin Mutai and Quentin Iglehart-Summers posted a school-record time of 3:00.04 to win the 4x400-meter relay national title at the NCAA Outdoor Championship. It was the fourth-fastest time in NCAA history and less than one-half second off the all-time record. It was Baylor's ninth title in the outdoor event. The Bears finished 15th nationally in the team standings.

**BAYLOR SOFTBALL — 2007 BIG 12 CHAMPIONS**



FLOYD CASEY STADIUM

The 2007 season marks Baylor's 58th playing at 50,000-seat Floyd Casey Stadium.

The Bears saw a stadium season record 259,559 fans go through the turnstiles for seven 2006 home games, including a single-game record crowd of 51,385 for Baylor's Oct. 28 game against No. 22 Texas A&M. Those marks broke records of 240,367 (for six games in 1991) and 51,218 (1995 vs. Texas A&M), respectively.

Since Guy Morriss' arrival in Waco, attendance at Baylor home football games has increased by nearly 25 percent, from 28,018 the year prior to his arrival in 2002 to the 37,080 the program averaged in 2006.

After World War II the Baylor Stadium Corporation was formed and began a campaign to build a football stadium for the University. The corporation launched a bond sales program and was able to raise \$1.5 million for construction costs. The Bears moved to Baylor Stadium in 1950.

The first game played in the new stadium was Sept. 30, 1950, a 34-7 Baylor victory over the Houston Cougars, then, an independent.

After 39 years of being called Baylor Stadium, 1989 was the stadium's first full year under the name Floyd Casey Stadium.

The name change officially took place during halftime ceremonies of the 1988 Homecoming game with Arkansas when it was announced that longtime University supporter and trustee the late Carl B. Casey of Dallas and his wife, Thelma, contributed \$5 million to the stadium renovation project in honor of his father Floyd Casey. The generous Casey donation was part of an \$8 million campaign.

Numerous enhancements continue to be made to the Bears' den.

A new recruiting center, located on the stadium's northwest patio, opened in 2006, and a tribute to Baylor football, designed to enhance the Grant Teaff Plaza, which includes the Letterwinners Plaza and the "I Believe" Walkway, was unveiled.

The plaza, first opened in 2002, originally was located at the base of the press box on the west side of the stadium. The plaza has since been expanded to wrap completely around the stadium. The plaza's centerpiece is a statue honoring former Baylor head coach and College Football Hall of Fame member Grant Teaff, the program's winningest coach who led Baylor to two Southwest Conference titles.

Baylor unveiled a new synthetic turf playing surface, the Prestige System, in 2004 after six seasons of play on the natural SportGrass turf. From 1972 through 1997 Floyd Casey stadium featured an AstroTurf playing surface.

In 2002, Baylor added a 23-by-31-foot LED video screen in the south end zone. The project included the addition of a state-of-the-art sound system and new digital scoreboards in both end zones.

Baylor's locker room received a face lift in 2001, when the \$2 million facility, the Big 12's largest, was completed.

A state-of-the-art luxury suite and pressbox was built on the stadium's west side in 1999. One year prior, the team meeting room area also underwent a complete remodeling.

The Carl and Thelma Casey Athletic Center, which houses departmental offices, locker rooms, training rooms, weight facilities, a video studio and meeting facilities, opened in 1991.

In 1990, new lights, expanded and improved restrooms, and new concession stands were completed.

An eight-year project to change from worn wooden to modern aluminum bleacher seats was completed in 1981.

During the 1970s, the beautiful and comfortable Letterman's Lounge was built on the stadium's west side with funds provided by former athletes. That facility received facelifts in both 1995 and 2006.

Prior to the building of Baylor Stadium in 1950, several playing sites were used by the Bears. Baylor's first football squad took the field in 1899, but no records are available to prove where it played. Old newspaper clippings and yearbook articles only indicate the first three seasons were played on an extremely rough field close to the school.

From 1902 to 1925, with the exception of 1906 when football was banned on campus because it was deemed too violent, the Bears played most of their games at Carroll Field, an on-campus facility.

An unknown number of games were played at the old Cotton Palace during this period, too.

The Bears played at the Cotton Palace from 1926-29 before returning to Carroll Field from 1930-35.

The team moved off the main campus for good in 1936 when it began calling the newly built Waco Stadium home.

Waco Stadium was renamed Municipal Stadium in 1942, and it was where Baylor played through 1949 except for a break from 1943-44 because of the war effort.





FLOYD CASEY STADIUM

BAYLOR'S HOME STADIUMS

STADIUM	YEARS	GAMES	W-L-T (PCT.)
Unknown Sites	1899-1901	14	10-3-1 (.750)
Carroll Field	1902-25*, 1930-35	169	99-54-16 (.633)
Cotton Palace	1926-1929	27	18-8-1 (.685)
Municipal Stadium	1936-1949#	51	33-14-4 (.686)
Floyd Casey Stadium	1950-present	297	160-131-6 (.549)
Totals	105 Seasons	558	320-210-28 (.599)

* - some games during this period played at the Cotton Palace (Baylor did not field a team in 1906)
 # - Baylor did not field teams in 1943 or 1944

YEARLY HOME ATTENDANCE

SINCE 1950				
YEAR	GAMES	TOTAL	AVG.	RECORD
1950	5	*114,000	*28,500	7-3
1951	5	134,000	26,800	8-2-1
1952	6	**48,000	**24,000	4-4-2
1953	5	117,000	23,400	7-3
1954	5	133,000	26,600	7-4
1955	5	141,000	28,200	5-5
1956	4	103,700	25,925	9-2
1957	5	116,000	23,200	3-6-1
1958	5	120,000	24,000	3-7
1959	4	95,000	23,750	4-6
1960	5	172,000	34,400	8-3
1961	5	124,000	24,800	6-5
1962	5	122,000	24,400	4-6
1963	5	133,000	26,600	8-3
1964	5	133,876	26,775	5-5
1965	4	107,246	26,812	5-5
1966	5	148,208	29,642	5-5
1967	4	97,000	24,250	1-8-1
1968	4	106,213	26,553	3-7
1969	3	75,000	25,000	0-10
1970	5	138,000	27,600	2-9
1971	4	115,500	28,875	1-9
1972	5	167,394	33,479	5-6
1973	5	156,257	31,251	2-9
1974	5	202,800	40,560	8-4
1975	5	205,900	41,180	3-6-2
1976	5	190,400	38,080	7-3-1
1977	7	221,450	31,636	5-6
1978	4	148,000	37,000	3-8
1979	5	202,550	40,510	8-4
1980	6	229,500	38,250	10-2
1981	6	197,000	32,833	5-6
1982	5	165,750	33,150	4-6-1
1983	6	192,926	32,154	7-4-1
1984	5	163,900	32,780	5-6
1985	5	190,006	38,001	9-3
1986	6	223,900	37,317	9-3
1987	6	182,115	30,353	6-5
1988	5	153,092	30,618	6-5
1989	5	168,961	33,792	5-6
1990	5	186,767	37,353	6-4-1
1991	6	240,367	40,061	8-4
1992	7	226,522	32,360	7-5
1993	5	171,910	34,382	5-6
1994	5	180,238	36,048	7-5
1995	5	202,707	40,541	7-4
1996	5	180,970	36,194	4-7
1997	5	187,713	37,543	2-9
1998	5	168,485	33,697	2-9
1999	6	175,013	29,169	1-10
2000	6	173,462	28,910	2-9
2001	7	214,206	30,601	3-8
2002	6	168,110	28,018	3-9
2003	7	208,960	29,851	3-9
2004	6	183,518	30,586	3-8
2005	5	194,493	38,899	5-6
2006	7	259,559	37,080	4-8

Editor's Note: missing one game in 1950, four in 1952

LARGEST CROWDS TO WATCH A BAYLOR GAME

AT FLOYD CASEY STADIUM

1.	10-28-07	TEXAS A&M	21-31 L	51,385
2.	10-21-95	TEXAS A&M	9-24 L	51,218
3.	10-26-74	TEXAS A&M	0-20 L	51,200
4.	10-19-91	TEXAS A&M	12-34 L	50,267
5.	11-5-60	TEXAS	7-12 L	50,000
6.	10-27-56	TEXAS A&M	13-19 L	49,500
7.	10-19-85	TEXAS A&M	W 20-15	48,756
8.	9-15-79	TEXAS A&M	W 17-7	48,500
	11-22-80	TEXAS	W 16-0	48,500
10.	11-11-72	TEXAS	3-17 L	48,394
11.	11-6-76	ARKANSAS	7-7	47,900
12.	9-20-75	ARKANSAS	3-41 L	47,200
13.	10-17-87	TEXAS A&M	10-34 L	46,812
14.	9-20-75	AUBURN	10-10	46,300
15.	9-15-73	OKLAHOMA	14-42 L	46,000
	11-8-80	ARKANSAS	W 42-15	46,000
17.	9-10-77	TEXAS TECH	7-17 L	45,800
18.	11-24-90	TEXAS	13-23 L	45,649
19.	10-21-89	TEXAS A&M	11-14 L	45,565
20.	11-20-76	TEXAS	W 20-10	45,500
21.	11-9-96	TEXAS A&M	7-24 L	45,112
22.	10-15-77	TEXAS A&M	31-38 L	45,000
	10-17-81	TEXAS A&M	W 19-17	45,000
	11-11-78	ARKANSAS	14-27 L	45,000
	11-8-86	HOUSTON	24-12 L	45,000

TOTAL SEASON ATTENDANCE

HOME AND AWAY

1.	536,833	1997	15.	455,512	1991
2.	530,127	1975	16.	448,722	1977
3.	523,681	2006	17.	441,616	1999
4.	521,235	1985	18.	435,900	1974
5.	510,541	2005	19.	435,098	2002
6.	493,146	1990	20.	433,569	1984
7.	492,968	1979	21.	423,712	1982
8.	478,868	1989	22.	414,659	1980
9.	478,517	2003	23.	411,328	1983
10.	471,749	1996	24.	406,594	1981
11.	470,922	1978	25.	397,684	1994
12.	470,331	1998			
13.	463,094	2001			
14.	461,487	2004			

SEASON ATTENDANCE RECORDS

7 games	259,559 in 2006	37,080 average
6 games	240,367 in 1991	40,061 average
5 games	205,900 in 1975	41,180 average
4 games	148,000 in 1978	37,000 average

HIGHEST SEASON HOME ATTENDANCE TOTALS

SINCE 1950

YEAR	GAMES	TOTAL	AVG.	RECORD	
1.	2006	7	259,559	37,080	4-8
2.	1991	6	240,367	40,061	8-4
3.	1980	6	229,500	38,250	10-2
4.	1992	7	226,522	32,360	7-5
5.	1986	6	223,900	37,317	9-3
6.	1977	7	221,450	31,636	3-8
7.	2001	7	214,206	30,601	3-8
8.	2003	7	208,960	29,851	3-9
9.	1975	5	205,900	41,180	3-6-2
10.	1974	5	202,800	40,560	8-4

LARGEST CROWDS TO WATCH A BAYLOR GAME

AWAY FROM FLOYD CASEY STADIUM

1.	9-20-97	at Michigan	3-38 L	106,041
2.	9-27-75	at Michigan	14-14 L	104,248
3.	10-14-06	at Texas	31-63 L	88,966
4.	9-11-82	at Ohio State	14-21 L	88,622
5.	9-30-78	at Ohio State	28-34 L	87,998
6.	10-22-05	at Oklahoma (2OT)	30-37 L	83,456
7.	10-28-00	at Texas	14-48 L	83,092
8.	11-9-02	at Texas	0-41 L	83,016
9.	10-2-04	at Texas	14-44 L	82,626
10.	10-6-01	at Texas A&M	10-16 L	82,589





BAYLOR

TRADITION

THE BEAR NICKNAME AND MASCOT

Baylor began intercollegiate athletic competition in the 1890s, but the University was without an official mascot until 1914. That's the year President Samuel Palmer Brooks held a vote of the student body to determine how the University's teams would be known nationwide. Former student George Baines Rosborough offered a \$5 gold piece to the student who submitted the winning entry.

Despite competition from two dozen rivals including the buffalo, antelope, frog and ferret, Baylor students chose the bear as the University's mascot, and Doyle Thraillkill of San Antonio won the \$5 prize. Baylor's student newspaper the *Lariat* soon carried the headline "Bruin is Elected Patron Saint of All Baylordom."

Although Baylor adopted "Bears" as its official nickname in 1914, it was not until the 1920s that a real bear mascot came to the University.

The first live bear was made available by the troops of the 107th Engineers, a unit of the 32nd Infantry Division stationed at Waco's Camp MacArthur during World War I.

The bear, named Ted, made his first appearance at the 1917 Baylor-Texas A&M football game, and when the unit received its orders to move on, the bear was left in the hands of the Baylor athletic department. Since then, the use of bears at Baylor football and basketball games has become as much a fixture as the players, cheerleaders and bands.

A series of bears have served as Baylor's mascot, but perhaps the best-known was Joe College, who came to Baylor through the work of Bill Boyd, then a Baylor student. Boyd bought the bear from a zoo that went broke at the Cotton Palace in Waco. He then approached Baylor's president, Pat Neff, and offered to take care of the bear in exchange for free tuition. Neff accepted the deal and the tradition of live bears as mascots has continued since.

In 1974, the student body voted to name all the bears "Judge" followed by a surname in honor of the university's namesake, Judge R.E.B. Baylor. Baylor's current mascots are "Joy," named in honor of the wife of the late President Emeritus (and former Chancellor) Herbert H. Reynolds, and the newest mascot, "Lady" named after Sue Sloan, wife of then-President Dr. Robert B. Sloan Jr.

The bears attend several Baylor athletic events, schools, community centers, churches, and any other educational outreach.

The bears may also be seen at the Bill and Eva Williams Bear Habitat located in the center of the Baylor campus. The new home of the bears was dedicated during Homecoming 2005 and is classified as a Class 'C' Exhibitor Zoo. It is licensed to hold up to three North American Black Bears and is regulated and licensed by the United States Department of Agriculture and the Texas Parks and Wildlife.

"SIC 'EM BEARS" AND THE BEAR CLAW

In 1960, Baylor's yell leaders introduced the "Bear Claw" hand signal — made by slightly curving all five fingers inward to form a claw — and the "Sic 'Em Bears" yell. The initial reaction to the new traditions from students and faculty was mixed.

The issue was a topic of heated debate on campus, and the use of both the hand signal and yell was sporadic until Grant Teaff arrived as Baylor's head football coach in 1972. Teaff initiated a new era of Baylor football, and the "Bear Claw" and "Sic 'Em Bears" yell came to symbolize pride in Baylor athletics.

In addition to being used during the yell, the "Bear Claw" is held up during the performance of Baylor's school song, "That Good Old Baylor Line." Football players traditionally hold up their helmets during the playing of the school song.

THE BAYLOR LINE

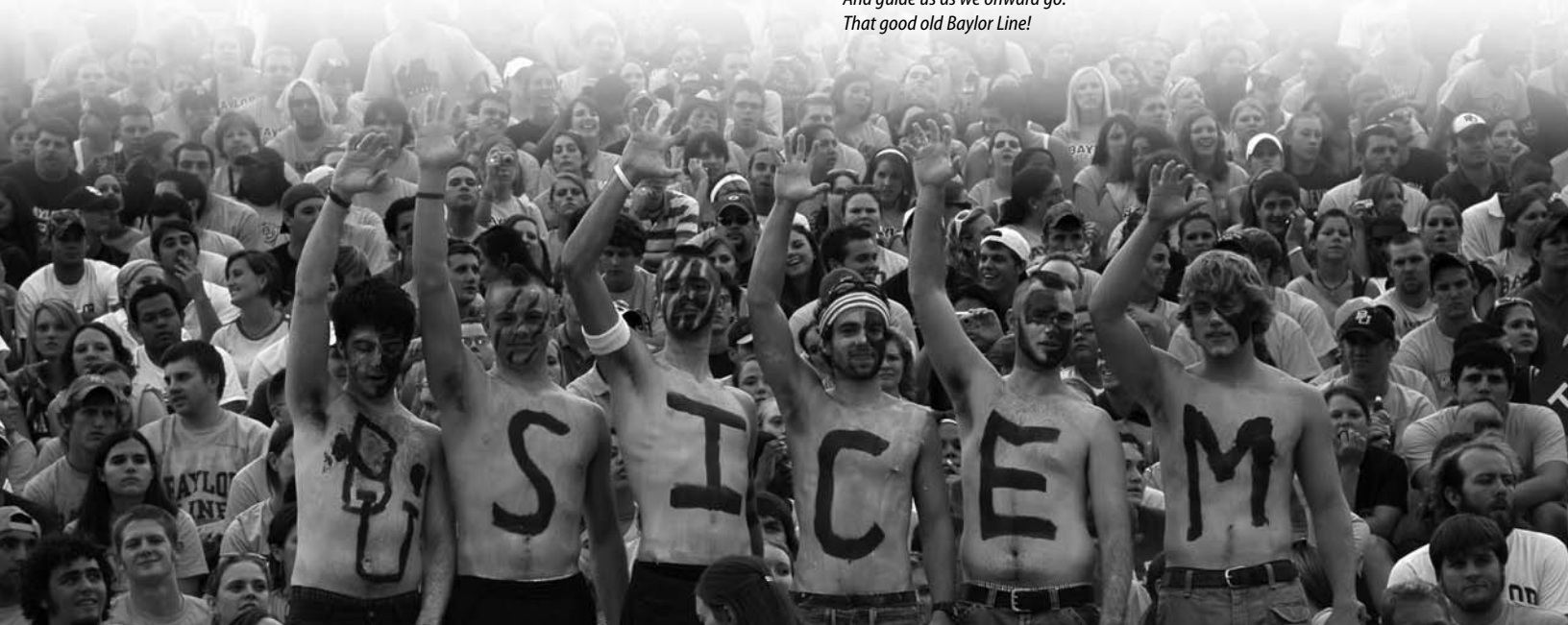
The Baylor Line is a freshman spirit organization. Line members wear matching jerseys to home football games and sit in a block of seats in front of the Baylor cheerleaders. Baylor Line members leave the stands prior to kickoff to run the perimeter of the field and form a line for the team to enter before kickoff.

"THAT GOOD OLD BAYLOR LINE"

The beginnings of Baylor's school song can be traced back to 1907. That's when student George Baines Rosborough penned an alternative set of lyrics to the waltz tune "In The Good Old Summertime," first made popular on Broadway in 1902. Rosborough's new lyrics were humorous, with references to sending Baylor's gridiron rivals home "done up in turpentine." For the next quarter century, the altered tune gained acceptance as Baylor's unofficial school song.

In the fall of 1931, Enid Markham, wife of music professor Robert Markham, decided that the words to the song were undignified and not representative of Baylor. So, she penned a new set of lyrics, which have since become accepted as the University's school song:

*That good old Baylor Line!
That good old Baylor Line!
We'll march forever down the years,
As long as stars shall shine.
We'll fling our Green and Gold afar
To light the ways of time,
And guide us as we onward go:
That good old Baylor Line!*





GOLDEN WAVE BAND

In 1902, 17 students pooled their talents to become the Baylor Cadet Band. The following year, membership increased to 28 as the band, directed by Charles W. Parker, went under the auspices of the ROTC department. The band remained a part of Baylor's ROTC until the end of World War I, when the group reorganized and became known as the Baylor Bear Band.

The band became known as the Golden Wave after members first wore new golden-colored uniforms at the Baylor-SMU football game in 1928. The next year, Everett McCracken was appointed director and kicked off a new era of development for the band with a 10-day, 820-mile tour of Texas. During the next half century, the band gained national prominence and was featured in the Orange, Sugar, Gator, Bluebonnet and Cotton Bowls. The current Golden Wave Marching Band, directed by Barry Kraus, marches approximately 260 members.

THE IMMORTAL TEN

Baylor has many traditions and a rich history as a university that has been in existence for over 150 years. One of the events that has had a lasting impact on the University and its athletic department is the story of the Immortal Ten.

On January 22, 1927, coach Ralph Wolf was taking his first Baylor basketball team to play a game at Texas. This was a crucial game in the Bears' race for the 1927 Southwest Conference championship. The trip was not a pleasant one, as rain had poured over Central Texas for the majority of the day and continued as the team departed for Austin. That hampered the vision of the chartered bus driver as debris from the road sprayed the windshield of the bus.

At Round Rock, Texas, just miles from the team's arrival in Austin, one of America's first athletic tragedies occurred. A speeding train from the I&GA Railroad Company rammed into the side of the bus at a railway crossing near the center of the city. Ten of the 21 players, coaches and fans of the Baylor party that traveled on the bus that day were killed.

Baylor remembers the story each year at Homecoming, when freshmen hear the tragic story and participate in a candlelight remembrance ceremony. An on-campus statue honoring the Immortal Ten will be dedicated in the fall of 2007.

There was a hero of the accident, James Clyde "Abe" Kelly. Kelly, captain-elect of the 1927 football team, saw the train just before impact and pushed his roommate, Weir Washman, out of the bus' window. Kelly is credited with saving the life of his best friend at the greatest expense to himself. Kelly was one of the 10 who died in the collision.

Others who did not survive the wreck were William Winchester, W.E. Murray, Merle Dudley, Sam Dillow, Jack Castellaw, L.R. "Ivey" Foster, Bob Hailey, R.L. Hannah and James Walker.

Wesley Bradshaw, who is still in the top 10 on the Baylor football career scoring list, was seriously hurt. Gordon Barry, Joe Potter, Edgar Gooch, C.S. Bean, Keifer Strickland (an All-SWC selection), John Kane, Dave Cheavers (former Baylor journalism department chair) and coach Wolf were slightly injured. Washman and Louis Slade were unhurt.

As a result of the tragedy, the remainder of the 1927 season was canceled, and the first highway overpass in Texas was constructed in Round Rock.

THE MEDAL OF HONOR

Baylor University is believed to be the only school in America to have two former athletes win the Congressional Medal of Honor, the nation's highest military honor for bravery. Both men — Jack Lummus and John "Killer" Kane — won the award for their World War II service.

Lummus played football, basketball and baseball for Baylor from 1938 through 1941. He was an All-Southwest Conference center fielder before signing with the National Football League's New York Giants.

After one year of professional football, Lummus joined the Marines and was a platoon leader in the initial days of fighting on Iwo Jima. While leading a charge on enemy positions, he stepped on a land mine and lost both legs. Despite the heavy bleeding that resulted, he led his platoon to knock out several pockets of Japanese fire, which played a vital role in the eventual U.S. victory. Lummus died of his wounds shortly after the battle.

Kane played football and basketball at Baylor and survived the 1927 bus-train accident that killed 10 Baylor students. He joined the Army Air Corps in 1932 and soon became a bomber commander of legendary proportions, leading the famous air raid on Nazi-controlled oil refineries in Ploesti, Romania, in 1943. Kane died in 1987.

CHRISTIAN ATMOSPHERE

Baylor is affiliated with the Baptist General Convention of Texas, a cooperative association of autonomous Texas Baptist churches. All members of the University's Board of Regents are Baptist.

Baylor is concerned with the spiritual, moral and intellectual development of those who come within its sphere of influence. It is committed to a caring relationship among its students, staff and faculty — a caring that is characterized by understanding, forgiveness and respect for individuality. The University is proud of its Christian heritage and strives to be an institution stimulated both by the power of God and the search for truth.

A number of organizations at Baylor help the University carry out its Christian mission, including the offices of the Dean of Chapel/University Ministries and Church Relations; the centers for Christian Ethics and Ministry Effectiveness; the institutes of Church-State Studies and Faith and Learning; Baylor You youth camps; and numerous student ministry groups representing a variety of faiths.

In addition, all Baylor students participate in two semesters of Chapel, a twice-weekly University gathering which features lectures and performances from a distinguished group of speakers and artists.

THE HOMECOMING TRADITION

Baylor is believed to be among the first five schools nationally ever to celebrate homecoming along with Illinois, Northern Illinois, Indiana and Michigan. Baylor held its first homecoming in 1909 and responded with a 6-3 win over TCU on Thanksgiving Day, then took a six-year hiatus before celebrating its second in 1915 with 51-0 victory over TCU.

Usually celebrated over Thanksgiving weekend, early Homecomings were held sporadically until they became an annual event in 1930 when the name was changed from "Good Will Week" to Homecoming and brought under the Baylor Chamber's direction.

One tradition which remains from 1909 is the Homecoming parade, which featured well over 130 entries, with both 60 automobiles and carriages, plus student organizations on foot in its first year. As it is today, the parade was led by law enforcement and the Baylor marching band.

FRANK FALLON

Radio waves throughout the Baylor family fell silent the evening of April 30, 2004, upon the passing of the legendary Frank Fallon.

Best known as the former "Voice of the Baylor Bears," Fallon's face and voice were synonymous with Baylor athletics.

A native of El Paso, Texas, Fallon grew up in San Antonio, Texas, attending Alamo Heights High School. He began his broadcasting career at KITE San Antonio at the age of 18. Following graduation from Baylor in 1953, Fallon joined Waco's KWTX and enjoyed a 28-year association with the station.

He served as the play-by-play announcer for Baylor football and basketball for 42 years. Fallon spent 20 years as the public address announcer and "Voice of the NCAA Final Four," as well as doing television play-by-play for Southwest Conference Basketball on NBC and ESPN.

A broadcast journalism professor at Baylor in his latter years, Fallon received many prestigious awards during his career. In August 2001, he was presented the Chris Schenkel Award, honoring lifetime excellence and community contributions. Fallon was the recipient of the 2001 Baylor Communications Award.

He was honored as Texas Association of Broadcasters Sportscaster of the Year five times and Associated Press Best Radio Play-By-Play Announcer seven times.

Fallon is a member of the Baylor Hall of Honor and the Texas High School Hall of Fame. He also was voted one of the top 10 all-time Texas radio play-by-play announcers by the Texas Sportswriters Association and in 2005 was inducted into the Texas Hall of Fame's inaugural sports media class.

In Fallon's honor, Waco's Chamber of Commerce annually sponsors the Frank Fallon Sportsmanship Award.



FRANK FALLON

DAVE CAMPBELL

A 1950 cum laude graduate of Baylor University, Dave Campbell is truly a living legend in the world of sports journalism.

Campbell is best known for founding *Texas Football* in 1960. He served as editor and publisher for the annual preseason publication that quickly emerged as the nation's prototype regional sports publications. Campbell still serves as the publication's editor-in-chief.

Save a stint with the 14th Armored Division in France and Germany during World War II, Campbell spent 51 years as a member of the editorial staff at the *Waco Tribune-Herald*. Hired by the newspaper in 1942, Campbell became sports editor in 1953 and held that position until his retirement in 1993.

However, retirement did not last long; Campbell was hand-picked to create and edit the *Baylor Bear Insider*, a Baylor Bear Foundation publication devoted solely to the coverage of Baylor athletics.

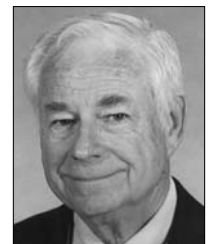
The list of accolades and honors Campbell has received stretches as long as his career. Along with winning the Bronze Star for heroic achievement during World War II, Campbell has been presented the Bert McGrane Award and the Jake Wade Award, the highest honors given by the Football Writers' Association of America and the College Sports Information Directors of America, respectively.

A past FWAA president, Campbell is a member of the Texas High School Football Hall of Fame and the writers' category of the Texas Sports Hall of Fame. In 1992, Campbell was given Baylor's Distinguished Alumnus Award.

Four years later, he was named "Touchdowner of the Year" by the Houston Touchdown Club. Campbell was inducted into the Baylor Athletic Hall of Fame in 2004 and was one of eight members of the Texas Sports Hall of Fame's inaugural sports media class honored in 2005.

In August 1999, then-Baylor Director of Athletics Tom Stanton announced the donation of \$250,000 by Mr. and Mrs. Bernard Rapoport, longtime friends of Campbell. The generous donation was earmarked for the creation of the Dave Campbell Media Center at Floyd Casey Stadium.

Campbell and his wife, Reba, also a Baylor graduate, have been married 54 years. They have two daughters, Mrs. David (Rebekah) Roche of Austin, Texas, and Mrs. Alan (Julie) Carlson of Waco.



DAVE CAMPBELL



DEFENSIVE BACK GREATS

Highlighted by 1986 Jim Thorpe winner Thomas Everett, who was inducted into the College Football Hall of Fame in 2006, Baylor defensive backs have been a staple in the NFL Draft.

The following Baylor defensive backs have all gone on to play in the NFL: Jackie Allen, Willie Andrews, Gary Baxter, Robert Blackmon, Kirk Collins, Ray Crockett, Preston Davis, Chuck Dupre, Thomas Everett, Ron Francis, Austin Gonsoulin, Gary Green, Cedric Mack, Vann McElroy, Bo Metcalf, Mike Nelms, Adrian Robinson, Tyrone Smith, Johnny Thomas, Reyna Thompson, Vic Vines, Robert Williams and Albert Witcher.

GRANT TEAFF

Perhaps no individual is as responsible for advancing the cause of Baylor football as legendary head coach Grant Teaff.

Teaff was hired to coach Baylor's program in 1972 when many people said the Bears should drop from the Division I ranks. When the final gun sounded on the 1992 John Hancock Bowl — Teaff's last game as the Bears' head coach — he had accomplished one of the most distinguished coaching careers in history.

Teaff finished his career 170-151-8 overall in 30 years as a head coach. He was 128-105-6 at Baylor; 83-74-4 in the Southwest Conference and 4-4 in bowl games.

The six-time SWC Coach of the Year and one-time National Coach of the Year coached 16 first-team All-Americans and 83 all-conference players.

Teaff finished his career as the nation's second-ranked coach for tenure at his present school, the fourth-ranked coach for SWC league wins, third-ranked coach for games as an SWC head coach, second-ranked coach for seasons in the SWC, sixth-ranked coach for overall victories by an SWC coach, ninth-ranked active coach for career wins and 20th-ranked active coach for winning percentage.

He coached 12 postseason all-star games and the other SWC schools went through 38 different head coaches during Teaff's tenure in Waco. He coached against such giants as Bear Bryant, Joe Paterno, Darrell Royal, Woody Hayes, Bo Schembechler, Vince Dooley, Shug Jordan, Tom Osborne, Frank Broyles, LaVell Edwards, Bill McCartney, Lou Holtz, Barry Switzer, Bill Yeoman, Jimmy Johnson, Johnny Majors and Hayden Fry to name just a few.

Teaff currently heads the American Football Coaches Association as the organization's executive director. The AFCA is widely recognized as the game's driving force in terms of promotions, legislative matters, ethics and professional standards. And the organization's driving force is Coach Teaff.

Teaff moved into his position as the "coaches' coach" after his highly successful 21-year stint as the Bears' head coach. What Teaff has done with the AFCA has mirrored his accomplishments at Baylor.



MIKE SINGLETARY (LEFT) AND WALTER ABERCROMBIE

MIKE SINGLETARY

One of the all-time greats to ever don the Green and Gold was Mike Singletary. The eventual NFL Hall of Famer arrived at Baylor in 1977 with two goals: To earn a college degree and to become the greatest defensive player in school history. Four short years later, both goals were achieved.

Everyone who saw Singletary play agrees that he was college football's greatest middle linebacker playing in the late 1970s and early 1980s. He still holds school records for career tackles with 662 (second place is 370), single-season tackles with 232 (the next closest is 144) and single-game tackles (33). Coach Lou Holtz, against whose Arkansas team he had those 33 tackles, called Singletary the best middle linebacker he ever coached against. Coach Woody Hayes, after seeing Singletary make 29 tackles against Ohio State, called him unstoppable. Alabama coach Paul "Bear" Bryant said that Singletary and Leroy Jordan were the only two linebackers he had ever seen who were capable of making the tackle on every single running play in a game.

Perhaps Singletary's most amazing statistic came in the area of broken football helmets. During his Baylor career Singletary hit opposing ball carriers so hard he cracked and shattered 16 of his own helmets. The Baylor football equipment staff routinely had three helmets fitted and prepared for him to wear.

Singletary earned All-SWC honors four times. As a freshman he was named Southwest Conference Newcomer of the Year. As a sophomore, junior and senior he was named Southwest Conference Defensive Player of the Year. Twice he won the Davey O'Brien Award as the Southwest's best football player. He was named All-America three years and consensus All-America twice. Named to Baylor's All-Decade teams of both the 1970s and 1980s, he was Baylor's Defensive Player of the 1980s and was named to its All-Half Century Football Team.

A 1990 Baylor Athletic Hall of Fame inductee, Singletary was inducted into the Southwest Conference Hall of Fame in 1994. One year later, he was named to the Football Writers Association of America All-Quarter Century All-America Team for players who played between 1970-95.

In 1996, Singletary was honored as one of the greatest college football players ever when he was inducted into the National Football Foundation Hall of Fame.

As a professional, Singletary's accomplishments were equally impressive. He was named the NFL Defensive Rookie of the Year, and was selected to 10 Pro Bowls and honored as an All-Pro an amazing nine times in his 12-year NFL career with the Chicago Bears. He was named the Defensive MVP of the Bear's Super Bowl championship team and won the NFL Man of the Year Award as the top player in professional football based on the highest standards of play and community involvement.

In 1998, Singletary received the highest honor in football, when he was inducted into the NFL Hall of Fame in Canton, Ohio.

The NCAA selected Singletary as one of its six 2005 Silver Anniversary Award winners. The award recognizes former student-athletes who completed successful collegiate careers in various sports 25 years ago and went on to excel in their chosen professions.

Singletary currently is the assistant head coach and linebackers coach for the San Francisco 49ers.



GRANT TEAFF



UNIVERSITY ADMINISTRATION

**Dr. John M.
LILLEY****University President
Baylor, 1961**

Dr. John M. Lilley was unanimously elected the 13th president of Baylor University by the Board of Regents on Nov. 4, 2005, and assumed his alma mater's presidency on Jan. 1, 2006.

A native of Louisiana and the son of a Baptist minister, Dr. Lilley earned three music degrees from Baylor: a bachelor of music education degree in 1961, a bachelor of music degree in 1962 and a master of music degree in 1964. He went on to earn his doctorate in music from the University of Southern California in 1971. His scholarship focused on musical works from the Baroque and modern eras.

Prior to returning to his alma mater, Dr. Lilley served for more than four years as the 14th president of the University of Nevada, Reno. He led the major research and land-grant institution through a comprehensive strategic planning process that incorporated the best ideas of faculty, staff, students and friends. He presided over an expansion of the institution's external funding, created new research centers and institutes to further its scientific outreach, and strengthened the leadership team to create a more responsive, more nimble team that focused on the academic mission of the university.

Before assuming the presidency at Nevada, Reno, Dr. Lilley was the head of Penn State Erie. Over a 21-year period, he led the four-year and graduate campus of The Pennsylvania State University through a period of dramatic growth.

During his tenure, enrollment doubled, admissions standards rose, and the college's physical campus grew from 400 to 750 acres. Under his leadership, the institution created four-year and/or graduate programs in science, engineering, and business, all of which earned accreditation from top accrediting agencies. He presided over creation of an honors program, secured a \$20 million private endowment for the School of Business, and helped to found the Allegheny Mountain College Conference for athletics. Penn State Erie's athletics program grew from nine intercollegiate sports to 21 teams that were in full compliance with Title IX. He also led in the creation of 13 research centers for economic development and a 200-acre research park on campus.

In July 2002, Penn State's trustees voted to name the Erie campus' new library in Dr. Lilley's honor. At the same time, he received Penn State Erie's top honor, the Behrend Medallion, for outstanding service to Penn State and the Erie community.

Dr. Lilley began his academic career as a faculty member at The Claremont Colleges in California. In 1976, he was named assistant dean of the College of Arts and Sciences at Kansas State University, where he chaired the college's curricular affairs committee, led a reform of the college's general education requirements, and supervised the student advising program.

A great believer in community service and engagement, Dr. Lilley has served on the boards of the Economic Development Authority of Western Nevada, the Reno Philharmonic, and the Education Collaborative.

While at Penn State, he served as president of the Rotary Club and chair of the United Way board. His other board memberships included the Erie Philharmonic; WQLN, Northwest Pennsylvania's public radio and TV stations; the Americans for the Competitive Enterprise System; the Northwestern Pennsylvania Industrial Resource Council; and the Erie Plastics Corp. He also was a corporator of Hamot Health Systems Inc. and the Saint Vincent Health Center.

Professionally, he has served on the board of the American Association of State Colleges and Universities.

While a student at Baylor and USC, Dr. Lilley, a licensed Baptist minister, served as minister of music at four Baptist churches. He and his wife, Geraldine (Gerrie), have four grown children and three grandchildren. Dr. and Mrs. Lilley are members of First Baptist Church, Waco.

**Michael
ROGERS****Faculty Representative
Texas Tech, 1972**

Professor Michael Rogers has served as Baylor's Faculty Representative to the Big 12 Conference and the National Collegiate Athletic Association since 2002 and has been a member of the Baylor Law faculty since 1984.

Rogers earned a bachelor of business administration degree and graduated with honors in 1972 from Texas Tech University, where he was a member of the Beta Gamma Sigma and Phi Kappa Phi honor societies and a varsity scholarship basketball player. He received his J.D. degree from the University of Oklahoma in 1974, where he was an editor of the Oklahoma Law Review and was admitted to membership in the Order of the Coif.

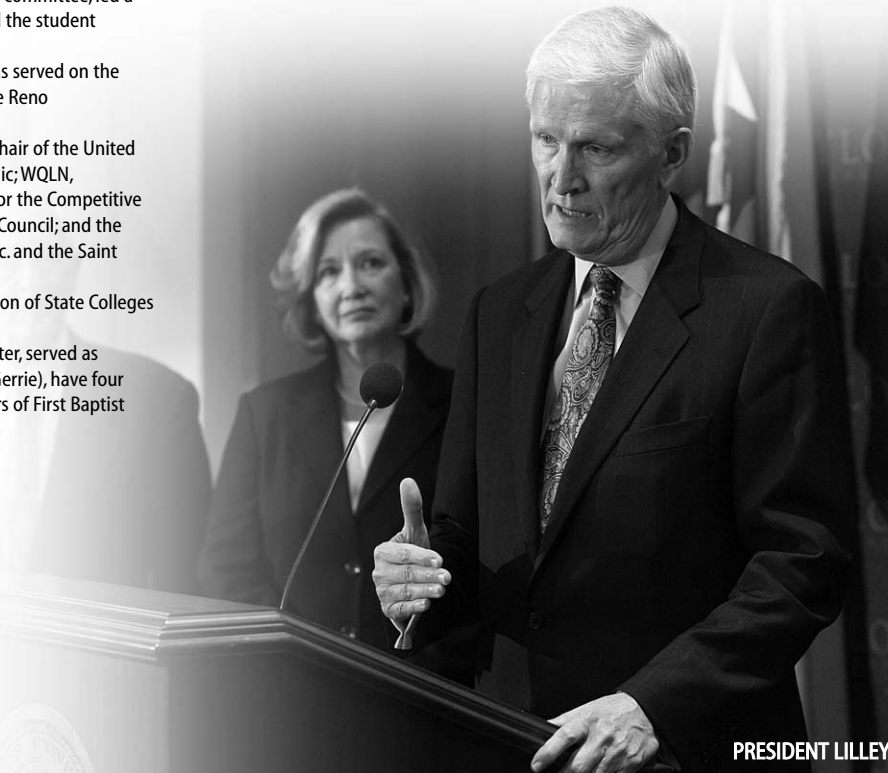
Rogers was in private practice from 1975 to 1984, during which time he was a founding partner of Gaar & Bell (now Gilmore & Bell), a securities transactions law firm with offices in Kansas and Missouri. He is admitted to practice law in Oklahoma, Kansas and Texas.

During his private practice work, Rogers served as lead counsel in dozens of private securities transactions and over 100 public offerings of tax-advantaged securities. While teaching Securities Regulation at Baylor, he has served as consulting counsel in numerous securities lawsuits.

In 1984 he joined the Baylor Law faculty, where his subjects include family law, securities regulation and alternative dispute resolution. Rogers is an experienced mediator and serves on the panel of mediators for the United States District Court Western District of Texas. He continues to serve as a director (Board Chairman, 2000-2001) of the McLennan County Dispute Resolution Center and on the panel of mediators for the United States District Court, Western District of Texas. Rogers formerly served on the panel of arbitrators for the American Arbitration Association.

For more than a decade, Professor Rogers has served as chair of Baylor's Professional Sports Counseling Panel. In that capacity, he has rendered advice to numerous future professional athletes, including Olympic gold medalist Michael Johnson and Super Bowl champion Santana Dotson.

Rogers is the son of the late Bob J. Rogers, who served as head basketball coach at Texas A&M University from 1957 to 1963.

**PRESIDENT LILLEY**



DIRECTOR OF ATHLETICS



Ian
McCaw

Director of Athletics
Laurentian, 1985

Ian McCaw was named Director of Athletics of Baylor's 18-sport, Big 12 intercollegiate athletics program Sept. 8, 2003. Under McCaw's leadership, the department has achieved unprecedented academic, athletics and administrative success.

Since 2003, Baylor has enjoyed its most competitively successful period in the history of its intercollegiate athletics program. During that time, Baylor has captured two NCAA national championships, 16 Big 12 conference championships and recorded its three highest finishes in the NACDA Directors' Cup standings.

In 2006-07, Baylor had a school-record tying 13 teams advance to postseason competition and won five Big 12 championships. Softball reached the Women's College World Series and captured the Big 12 regular-season title for the first time, men's track won national indoor and outdoor titles in the 4x400-meter relay, and men's and women's tennis captured Big 12 regular season and tournament championships. Baylor finished 38th in the NACDA Directors' Cup standings.

In 2005-06, a school-record 13 teams advanced to postseason competition while eight teams finished the year ranked in the Top 20 nationally. Men's and women's tennis both captured Big 12 regular season championships with the women adding a tournament title. Baylor recorded its second-highest finish ever in the NACDA Directors' Cup standings ranking 32nd nationally and fifth in the Big 12.

Baylor had its most successful year ever in 2004-05 which included winning the national championship in women's basketball, being national runner-up in men's tennis and finishing third in baseball at the College World Series. Baylor eclipsed the previous school record of two conference championships in one year by winning Big 12 regular season championships in baseball, women's basketball, men's tennis and women's tennis. BU added Big 12 tournament titles in women's basketball and men's tennis.

Baylor finished third in the Big 12 and 25th in the nation in the 2005 NACDA Directors' Cup, its highest ranking ever. At the same time, Baylor student-athletes led the Big 12 with a NCAA graduate rate of 78 percent, eight points higher than the school's general student population.

In 2003-04, Baylor had a highly successful year that included winning the first NCAA team championship in school history in men's tennis along with five NCAA individual titles.

While Baylor athletics enjoyed extraordinary academic and athletics success, the department has made dramatic strides administratively, too.

A five-year strategic plan for intercollegiate athletics, Above and Beyond, was developed and implemented inclusive of department goals and objectives. An outgrowth of this plan was the creation of the five-year, \$90 million development campaign Victory with Integrity which was initiated in February 2005.

Improved athletics development success has followed, leading to the funding and construction of the Grant Teaff and Letterwinners Plazas at Floyd Casey Stadium; the Lt. Jack Whetsel Jr. Basketball Practice Facility; the Willis Family Equestrian Center; and the Highers Athletics Complex and the Simpson Athletics and Academic Center. The athletics endowment has grown to more than \$22 million while the Baylor Bear Foundation has set new annual fund records in three consecutive years.

Baylor successfully completed the NCAA certification process being cited as one of only two institutions in the certification program's history to have no issues raised in its self-study. An expanded compliance staff, improved financial services area and enhanced Student Athlete Services/Life Skills unit are among the most significant internal improvements.

Record revenues in ticket sales, corporate sponsorship, television, licensing and expanded media exposure underscore the growth in external support for Baylor Athletics.

McCaw is Baylor's 12th athletic director and arrived from the University of Massachusetts, where he spent the previous year as director of athletics. McCaw was responsible for a 23-sport program and helped develop and implement a five-year strategic plan for UMass athletics, along with overseeing a \$2 million facility renovation.

McCaw previously served as director of intercollegiate athletics and campus recreation at Northeastern University from 1997-2002. He implemented a five-year strategic plan for Northeastern athletics inclusive of department goals and objectives.

A \$4 million renovation of Northeastern's Cabot Center, which included a refurbishment of the main gymnasium, an expanded speed, strength and conditioning center, a new sports medicine center, expanded and renovated locker rooms, was also completed under his direction. Northeastern graduated 65 percent of its student-athletes during McCaw's final year at the Boston institution, 14 points higher than the institutional average. Husky student-athletes also gave back to the community, as each team was required to participate in at least one community service project annually. The success of the Northeastern athletics program on McCaw's watch extended beyond the classroom, as the program captured a school-record six America East conference titles in 2001-2002, and five teams finished among the nation's top 20.

McCaw went to Northeastern from Tulane University, where he served as senior associate athletic director for development and associate athletic director for external affairs from 1992-1997, being named Tulane's co-interim director of athletics in 1996. Prior to his years at Tulane, McCaw worked in a variety of athletic administrative posts at the University of Maine from 1986 to 1992 including sports information, marketing and external affairs.

Recognized as a national leader in intercollegiate athletics, McCaw serves on the NCAA Championships Cabinet and its nominating committee. He is the chair of the Big 12 championship and awards committee; a member of the television, and game management and officiating committees. He also serves on NACDA's Executive Committee.

McCaw earned his master's degree in sport management from Massachusetts in 1987, after receiving a bachelor's degree in sports administration at Laurentian University in Sudbury, Ontario, in 1985. McCaw and his wife, Heather, are members of First Baptist Church of Woodway where he serves as a deacon. They are the parents of four children: Christy, Paul, Callie and Corinne. He is a member of the Board of Directors of Waco's Live Oak Classical School.



THE McCAW FAMILY



HEAD COACHES



JIM BARNES
Volleyball



SCOTT DREW
Men's Basketball



SYLVIA FERDON
Women's Golf



TODD HARBOUR
Track & Field/
Cross Country



MATT KNOLL
Director of Tennis/
Men's Tennis

COACH (ALMA MATER)	SPORT	YEAR AT BU	06-07 REC.	CAREER REC.
JIM BARNES (McNeese State, 1994)	Volleyball	4th	18-15	208-149
Fourth-year head coach has improved win total each season at Baylor. The Bears fashioned a school-record 10-match win string in 2006 en route to program's highest win total (18) since 2001.				
SCOTT DREW (Butler, 1993)	Men's Basketball	5th	15-16	56-80
In fifth year of rebuilding the Baylor men's basketball program, the Bears' 15 wins in 2006-07 were the program's most since 2000-01 and third-highest total in 11-year history of Big 12 membership.				
SYLVIA FERDON (Wisconsin-Oshkosh, 1968)	Women's Golf	14th		
Baylor has made eight consecutive NCAA regional appearances, including its first-ever NCAA Championships berth in 2004. The Bears matched their highest Big 12 finish ever with third-place performance at 2007 league meet.				
TODD HARBOUR (Baylor, 1981)	Track/Cross Country	8th		
In third year as head track & field coach and eighth as head cross country coach. His track programs produced 19 All-Americans in 2007, including the NCAA men's indoor and outdoor championship 4x400-meter relay team; while women's cross country has made four consecutive NCAA Championship appearances.				
MATT KNOLL (Washburn, 1989)	Men's Tennis	12th	28-4	269-77
Has led Bears to 10 straight NCAA Tournament appearances, highlighted by four consecutive Final Four trips (2004-07), the school's first-ever NCAA team title in 2004 and a 2005 runner-up finish; seven top 10 finishes and seven Big 12 titles in last eight years, and the 2004 and 2005 NCAA singles champion.				
GLENN MOORE (Northwestern [La.] State, 1993)	Softball	8th	51-16	442-180
In 2007, guided program to its first-ever Women's College World Series appearance and its first Big 12 regular-season title en route to a school-record tying 51 victories. Lady Bears have made four straight NCAA Tournament appearances and captured their first-ever regional title in 2005.				
GUY MORRISS (TCU, 1973)	Football	5th	4-8	24-45
The Bears have improved their conference win total in each of the past three seasons and posted a school-record three Big 12 victories in 2006.				
KIM MULKEY (Louisiana Tech, 1984)	Women's Basketball	8th	26-8	183-53
Women's Basketball Hall of Famer has won 20 or more games every year while leading Lady Bears to seven straight postseason berths, including three Sweet 16's and the 2005 NCAA championship.				
GREG PRIEST (East Texas State, 1993)	Men's Golf	5th		
Led the Bears to a 10th straight NCAA Regional appearance in fourth season at the helm.				
JOEY SCRIVANO (Eastern Michigan, 1997)	Women's Tennis	6th	24-7	160-63
Baylor swept the Big 12 regular-season and conference titles for the second consecutive year in 2007 while reaching the NCAA Tournament's Round of 16 for the third consecutive season.				
STEVE SMITH (Baylor, 1986)	Baseball	14th	35-27	490-311-1
Former Bear pitcher has put Baylor baseball on the national scene with a Big 12-best nine NCAA Regional appearances, three Super Regional trips, one College World Series and a pair of league titles in 13 seasons.				
GEORGE VAN LINDER (Western Michigan, 1990)	Soccer	5th	6-12-1	117-90-16
Entering fifth season at Baylor after leading 2006 squad to first Big 12 Tournament appearance since 2001.				
ELLEN WHITE (Baylor, 1983)	Equestrian	3rd		
Second-year program finished eighth overall at 2007 Varsity Equestrian Championships; placed fifth in Western riding and eighth in English competition.				
NOTE: all records prior to 2007-2008 academic year				



ELLEN WHITE
Equestrian



GEORGE VAN LINDER
Soccer



STEVE SMITH
Baseball



JOEY SCRIVANO
Women's Tennis



GLENN MOORE
Softball



GUY MORRISS
Football



KIM MULKEY
Women's Basketball



GREG PRIEST
Men's Golf



ATHLETICS ADMINISTRATION



WALTER ABERCROMBIE
Associate AD
"B" Association



TIERRA BARBARA
Academic Advisor



KELLY BARE
Assistant Trainer



JEFF BARLOW
Equipment Manager



JULIE BENNETT
Associate Director
Athletic Media Relations



ANJANETTE BIDDLE
Student-Athlete
Services



MICHAEL BOLDING
Video Coordinator



PAUL BRADSHAW
Associate AD
Internal Affairs



BRYAN BRAY
Director
BaylorVision



JON BROWN
Assistant Director
Athletic Media Relations



TANNA BURGE
Assistant Coach
Strength & Conditioning



BART BYRD
Assistant AD
Student-Athlete
Services



DAVID CASE
Assistant Equipment
Manager



DAVID CHANDLER
Associate Director
Sports Medicine



BILL CHAVES
Associate AD
External Affairs



MICHAEL COLLINS
Assistant Director
Athletic Media Relations



KHALIL COLTRAIN
Assistant Trainer



GREG DAVIS
Assistant Director
Student-Athlete
Services



MICHAEL DEAL
Assistant Trainer



CHERYL ERVI
Office Manager
Bear Foundation



EMMITT FLORES
Assistant Ticket
Manager



JOHN GARRISON
Assistant AD
Marketing



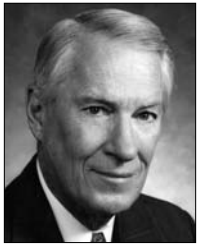
ROGER GOREE
Assistant Director
Facilities



BARBARA GUINN
Assistant to the
Athletics Director



ATHLETICS ADMINISTRATION



CLYDE HART
Director
Track & Field



KEVIN HENRY
Director
Student-Athlete
Development



TOM HILL
Associate AD
Facilities & Event
Management



HENRY HOWARD
Assistant Manager
Business



KEVIN HUFFINE
Assistant Director
Marketing



JAMES JARMÓN
Assistant Director
Student-Athlete
Services



DIANE JEE
Assistant Facilities
Manager



PHILLIP JOHNSON
Director
Concessions



NICK JOOS
Associate AD
Communications



KEVIN KYLE
Assistant Director
Bear Foundation



MILTON LEAL
Assistant Coach
Strength & Conditioning



LARRY LITTLE
Associate Director/
Publications Coordinator
Athletic Media Relations



WES LIVESAY
Director of
Premium Seating &
Excellence Funds
Bear Foundation



BRENDA MACY
Operations Manager
Bear Foundation



ERIN MALICH
Compliance Coordinator



ADITYA MALHOTRA
Assistant Ticket
Manager



JENNIFER MCGEE
Associate Ticket
Manager



DOUG McNAMEE
Assistant General
Manager
Baylor/ISP Sports
Network



SHAUN McPHERSON
Associate Coach
Strength & Conditioning



CHARLIE MELTON
Associate Coach
Strength & Conditioning



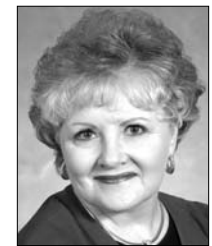
GREG MEYER
Director of
Annual Giving
Bear Foundation



JEFF MILLER
Assistant VP/
General Manager
Baylor/ISP Sports
Network



KEITH MILLER
Assistant AD
Compliance



MARTHA MOORE
Administrative Assistant
Facilities



ATHLETICS ADMINISTRATION



JOHN MORRIS
Assistant AD
Broadcast Properties



CAROLYN MORRISON
Administrative Assistant
Business



HEATH NIELSEN
Assistant AD
Athletic Media Relations



ALEX OLSON
Assistant Trainer



TODD PATULSKI
Senior Associate AD
Finance &
Administration



DONNA PERRY
Administrative Assistant
Media Relations



DREW PITTMAN
Operations Manager
Ferrell Center



NANCY POST
Assistant AD
Business
SWA



KEVIN PRICE
Associate AD
Compliance



KEVIN ROBINSON
Assistant Trainer



PAIGE RHODE
Academic Counselor



PETE ROWE
Assistant AD
Facilities & Operations



SARAH SARTOR
Student-Athlete
Services



GREG SCHILLER
Assistant AD
Ticket Services



JEANNIE SELKE
Administrative Assistant



DOYLE SHIRLEY
Technical Director
Ferrell Center



MIKE SIMS
Assistant AD
Athletic Training



DOUG SMITH
Associate AD
Bear Foundation



JIM TREGO
Associate AD
Football & Special
Projects



MARSHA WILEY
Director
Ticket Operations



JOHN WILLIAMS
Assistant AD
Strength & Conditioning



JONATHAN YEARTY
Assistant Manager
Facilities



PAULA YOUNG
Associate Director
Event Management



BIG 12 CONFERENCE

The Big 12 Conference has been synonymous with success in competitive play and in the classroom as it enters its 12th season, and league members anticipate continued success during the 2007-08 academic year.

In the first 11 years of the Big 12, the conference can boast of 30 team and over 350 individual NCAA Championships. The success continued this past season, with team titles in men's cross country (Colorado) and women's volleyball (Nebraska) in addition to numerous individual crowns.

Over the past three seasons alone a total of 11 NCAA trophies have been hoisted by Big 12 institutions, with at least one national crown won in 10 of 11 years for the conference, including each of the past 10 seasons.

Through the first nine Bowl Championship Series title games, the Big 12 leads all conferences with five appearances in the contest. Big 12 squads have played for the football national championship five times in the last eight years, with berths in 12 BCS games overall.

In basketball, eight men's and women's teams have advanced to their respective Final Fours in the past six seasons as the Big 12 continues its place among the elite intercollegiate athletic conferences. Numerous national honors have been won by men's and women's student-athletes during conference history, with Kevin Durant (Texas) the most recent to garner accolades as the consensus 2007 National Player of the Year.

The Big 12 and its member institutions are committed to a competitive environment where sportsmanship and fair play take center stage. Whether on the field, in the classroom, or within the community Big 12 student-athletes, administrators, coaches and game officials support the highest ideals in sportsmanship.

Big 12 student-athletes also do well in garnering national academic recognition. This past season, two league standouts were named the Academic All-America of the Year in their sport by *ESPN The Magazine* and the College Sports Information Directors of America. Nebraska's Sarah Pavan (volleyball) boasted a 4.0 grade-point average in Biochemistry, while Aaron Ivey of Oklahoma (baseball) also has a 4.0 GPA in Energy Management.

Competitive excellence, scholarship and sportsmanship are all equal components of the Big 12 philosophy. All-Big 12 teams and Academic All-Big 12 squads are recognized for each sport at the end of their respective seasons.

At the end of each academic year, the Conference honors its top male and female student-athletes with the Big 12 Athlete of the Year and Big 12 Sportsman of the Year awards.

Institutions can also nominate student-athletes for the prestigious Dr. Prentice Gautt Postgraduate Scholarships at the end of each academic year. A total of 177 scholars have received more than \$1 million in postgraduate financial aid through the first 10 years of the program.

The Big 12 sponsors 21 sports. Men's squads include baseball, basketball, cross country, football, golf, indoor track & field, outdoor track & field, swimming & diving, tennis and wrestling. Women's teams are fielded in basketball, cross country, golf, gymnastics, indoor track & field, outdoor track & field, soccer, softball, swimming, tennis and volleyball.

The conference is made up of 12 institutions that have shared many traditional rivalries throughout their histories. Member schools include - Baylor University, University of Colorado, Iowa State University, University of Kansas, Kansas State University, University of Missouri, University of Nebraska, University of Oklahoma, Oklahoma State University, University of Texas, Texas A&M University and Texas Tech University.

The Big 12's geographic footprint encompasses seven states, over 42 million people and more than 18 million television households.

The conference conducts championships for 20 of its 21 sports. Each championship helps to determine teams and/or individuals that will represent the Conference in national postseason competition. The winner of the Big 12 football championship game earns the league's berth into the prestigious Bowl Championship Series.

In its 11-year history, the conference has distributed \$913.2 million to its 12 member institutions.

The Big 12 staff administers to over 4,600 student-athletes in 21 sports. The conference is headquartered in Irving, Texas.

ALL-TIME BIG 12 TITLES

1. Texas — 88
2. Nebraska — 62
3. Texas A&M — 32
4. Oklahoma — 29
5. **Baylor** — 25
- Oklahoma State — 25
7. Colorado — 24
8. Kansas — 17
9. Iowa State — 9
10. Texas Tech — 8
11. Kansas State — 6
12. Missouri — 2

Source: Big 12 Conference

BIG 12 ... AS EASY AS 1-2

When referring to the Big 12 Conference, please remember the conference name (which is a registered trademark) should be listed as follows:

Big 12 Conference

The following should **NOT** be used in text when referencing the Big 12:

- Big XII
- Big Twelve
- The Big 12

In addition, the conference debuted a new updated Big 12 logo in March 2004. With the exception of the Big 12 Tournaments, the new mark is correct whenever graphics are used in discussion of the Big 12.

BIG 12 CONFERENCE STAFF

Interim Commissioner/	
Chief Operating Officer	Dan Beebe
Associate Commissioner	Tim Allen
Associate Commissioner -	
Women's Basketball/Championships	Dru Hancock
Associate Commissioner -	
Men's Basketball/Game Management	John Underwood
Chief Financial Officer	Steve Pace
Assistant Commissioner -	
Communications	Bob Burda
Assistant Commissioner -	
Events & Human Resources	Brad Clements
Assistant Commissioner -	
Governance & Compliance	Lori Ebihara
Assistant Commissioner -	
Championships	Dayna Scherf
Assistant Commissioner -	
Football & Student Services	Ed T. Stewart
Director of Communications	Rob Carolla
Director of Football Championship	Donnie Duncan
Director for Compliance	Mary Ellen Engk
Director of Marketing	Maark Keith
Coordinator of Football Officials	Walt Anderson
Associate Director of Communications	Joni James
Assistant Director of Communications	Carmen Branch
Assistant Director of Video Services	Sean Hollister
Staff Accountant/Ticket Manager	Tim Frick
Executive Assistant to the Commissioner	Melanie Ellis
Administrative Assistant	Regina Everett
Administrative Assistant	Tracy Hunt
Administrative Assistant	Valerie Rocha
Administrative Assistant	Brad Simmons
Receptionist/Administrative Assistant	Daysi Tavera
Assistant for Championships	Blair Beneke
Will Hancock Communications Intern	Jason Berney
Will Hancock Communications Intern	Ashley Walker

BIG 12 CONFERENCE

400 East John Carpenter Freeway
 Irving, Texas 75062
 469.524.1000
 469.524.1049 - Fax
www.big12sports.com



BAYLOR'S ALL-TIME BIG 12 CONFERENCE TITLES

REGULAR SEASON (17)

- 1998 Women's Soccer
- 2000 Men's Tennis
- 2000 Baseball
- 2001 Men's Golf
- 2002 Men's Tennis
- 2003 Women's Tennis
- 2003 Men's Tennis
- 2004 Men's Tennis
- 2005 Women's Basketball
- 2005 Women's Tennis
- 2005 Men's Tennis
- 2005 Baseball
- 2006 Women's Tennis
- 2006 Men's Tennis
- 2007 Men's Tennis
- 2007 Women's Tennis
- 2007 Softball

TOURNAMENT (8)

- 2002 Men's Tennis
- 2003 Men's Tennis
- 2004 Men's Tennis
- 2005 Women's Basketball
- 2005 Men's Tennis
- 2006 Women's Tennis
- 2007 Men's Tennis
- 2007 Women's Tennis



BIG 12 CONFERENCE

2006 FINAL STANDINGS

NORTH DIVISION

TEAM	BIG 12	PCT.	PF	PA	OVERALL	PCT.	PF	PA	HOME	AWAY	NEUT.	DIVISION
* Nebraska	6-2	.750	236	173	9-5	.643	428	256	6-1	3-2	0-2	5-0
Missouri	4-4	.500	214	178	8-5	.615	391	254	6-1	2-3	0-1	3-2
Kansas State	4-4	.500	188	218	7-6	.538	296	309	6-2	1-3	0-1	2-3
Kansas	3-5	.375	234	225	6-6	.500	348	306	5-2	1-4	0-0	3-2
Colorado	2-6	.250	160	199	2-10	.167	196	267	2-4	0-5	0-1	1-4
Iowa State	1-7	.125	120	262	4-8	.333	226	369	4-3	0-5	0-0	1-4

SOUTH DIVISION

TEAM	BIG 12	PCT.	PF	PA	OVERALL	PCT.	PF	PA	HOME	AWAY	NEUT.	DIVISION
* Oklahoma	7-1	.875	208	121	11-3	.786	424	242	6-0	4-1	1-2	4-1
Texas	6-2	.750	270	173	10-3	.769	467	238	5-2	2-1	3-0	4-1
Texas A&M	5-3	.625	193	174	9-4	.692	362	267	4-3	4-0	1-1	3-2
Texas Tech	4-4	.500	240	235	8-5	.615	422	326	4-2	3-3	1-0	3-2
Oklahoma State	3-5	.375	264	243	7-6	.538	458	333	4-2	1-4	2-0	1-4
Baylor	3-5	.375	194	320	4-8	.333	283	391	3-4	1-3	0-1	0-5

* - division champion

2007 COMPOSITE SCHEDULE

THURSDAY, AUGUST 30

Kent State at Iowa State

SATURDAY, SEPT. 1

Baylor at TCU

Nevada at Nebraska
 Missouri vs. Illinois [St. Louis]
 Oklahoma State at Georgia
 North Texas at Oklahoma
 Montana State at Texas A&M
 Kansas State at Auburn
 Colorado vs. Colorado State [Denver]
 Central Michigan at Kansas
 Arkansas State at Texas

MONDAY SEPT. 3

Texas Tech at SMU

SATURDAY, SEPT. 8

Rice at Baylor

Nebraska at Wake Forest
 Miami, Fla. at Oklahoma
 Fresno State at Texas A&M
 TCU at Texas
 UTEP at Texas Tech
 San Jose State at Kansas State
 Florida Atlantic at Oklahoma State
 Colorado at Arizona State
 Northern Iowa at Iowa State
 Southeast Louisiana at Kansas
 Missouri at Mississippi

FRIDAY, SEPT. 14

Oklahoma State at Troy

SATURDAY, SEPT. 15

Texas State at Baylor

Iowa at Iowa State
 Texas at Central Florida
 Utah State at Oklahoma
 UL-Monroe at Texas A&M
 Toledo at Kansas
 Missouri State at Kansas State
 USC at Nebraska
 Texas Tech at Rice
 Florida State at Colorado
 Western Michigan at Missouri

THURSDAY, SEPT. 20

Texas A&M at Miami (Fla.)

FRIDAY, SEPT. 21

Oklahoma at Tulsa

SATURDAY, SEPT. 22

Baylor at Buffalo

Illinois State at Missouri
 Miami (Ohio) at Colorado
 Texas Tech at Oklahoma State
 Iowa State at Toledo
 Rice at Texas
 Florida International at Kansas
 Ball State at Nebraska

SATURDAY, SEPT. 29

* Baylor at Texas A&M

* Oklahoma at Colorado
 * Iowa State at Nebraska
 * Kansas State at Texas
 Northwestern State at Texas Tech
 Sam Houston State at Oklahoma State

SATURDAY, OCT. 6

* Colorado at Baylor

* Iowa State at Texas Tech
 * Kansas at Kansas State
 * Nebraska at Missouri
 * Oklahoma vs. Texas [Dallas]
 * Oklahoma State at Texas A&M

SATURDAY, OCT. 13

* Baylor at Kansas

* Colorado at Kansas State
 * Texas at Iowa State
 * Missouri at Oklahoma
 * Oklahoma State at Nebraska
 * Texas A&M at Texas Tech

SATURDAY, OCT. 20

* Texas at Baylor

* Kansas at Colorado
 * Oklahoma at Iowa State
 * Kansas State at Oklahoma State
 * Texas Tech at Missouri
 * Texas A&M at Nebraska

SATURDAY, OCT. 27

* Baylor at Kansas State

* Colorado at Texas Tech
 * Iowa State at Missouri
 * Kansas at Texas A&M
 * Nebraska at Texas

SATURDAY, NOV. 3

* Texas Tech at Baylor

* Missouri at Colorado
 * Kansas State at Iowa State
 * Nebraska at Kansas
 * Texas A&M at Oklahoma
 * Texas at Oklahoma State

SATURDAY, NOV. 10

* Baylor at Oklahoma

* Colorado at Iowa State
 * Kansas at Oklahoma State
 * Kansas State at Nebraska
 * Texas A&M at Missouri
 * Texas Tech at Texas

SATURDAY, NOV. 17

* Oklahoma State at Baylor

* Iowa State at Kansas
 * Missouri at Kansas State
 * Oklahoma at Texas Tech

FRIDAY, NOV. 23

* Nebraska at Colorado

* Texas at Texas A&M

SATURDAY, NOV. 24

* Missouri vs. Kansas [Kansas City]

* Oklahoma State at Oklahoma
 Kansas State at Fresno State

SATURDAY, DEC. 1

Dr Pepper Big 12 Championship (ABC)
 [Alamodome, San Antonio]

* - Big 12 Conference game