



BASKETBALL STAFF





BAYLOR HEAD COACH SCOTT DREW

PERSONAL

Birthdate: Oct. 23, 1970

Birthplace: Kansas City, Mo.

Family: Wife, Kelly; daughter Mackenzie.

EDUCATION

Butler, 1993

Valparaiso, 1994 [Master's]

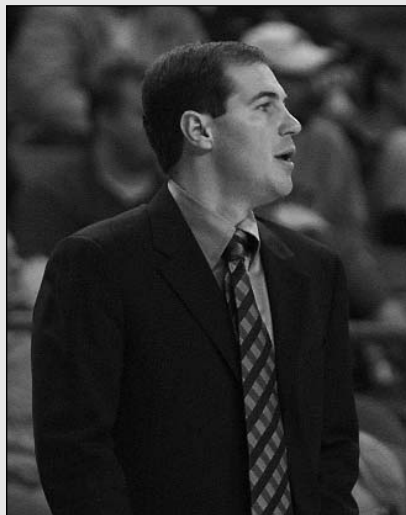
COACHING EXPERIENCE

1993-01 Valparaiso (assistant)

2001-02 Valparaiso (associate)

2002-03 Valparaiso (head coach)

2003- Baylor (head coach)



“INCREDIBLE STANDARDS”

Dick Vitale, ESPN analyst

“AN OUTSTANDING COACH”

Billy Donovan, Florida head coach

“IMPECCABLE REPUTATION”

Kelvin Sampson, Oklahoma head coach

“A GREAT TEACHER”

Mike Brey, Notre Dame head coach

“UNQUESTIONED INTEGRITY”

Steve Schanwald, Chicago Bulls Executive VP



On Aug. 22, 2003, Scott Drew assumed the head coaching position at Baylor University and took over one of the most daunting rebuilding projects in collegiate basketball history.

Two years into his Baylor tenure, basketball followers nationwide have recognized Drew's accomplishments under unprecedented circumstances (all 57 games Drew has coached at Baylor his teams have dressed seven or fewer scholarship players) as he and his staff have quietly served notice that Baylor basketball is on the rise.

After signing back-to-back top-15 recruiting classes and milking better-than-expected seasons out of two severely limited squads, Drew has turned heads and given Bear fans a glimpse of the program's potential.

Spirits are high in Central Texas as the

Baylor faithful have seen plenty of encouraging signs in the no-quit playing style of the Bears' recently outmanned teams and the never-ending optimism of their young coach.

Drew, at 35 one of the youngest head coaches in Division I basketball, has long been considered a top-level national recruiter. That reputation was evidenced quickly at Baylor when his first two recruiting classes (the first of which was signed during an abbreviated period after his hiring) were rated 10th and 11th, respectively, in the nation. The two classes are widely considered the best back-to-back groups of basketball recruits to ever sign with Baylor.

Drew and his teams have made a positive impression on the court as well, though not necessarily measured solely on wins and losses.



In his first season in 2003-2004, Drew inherited a team with half the allotted scholarship players and he added a handful of walk-ons. The team – which was summarily dismissed by all preseason prognosticators as having no chance to be competitive and perhaps finish winless – surprised everyone by winning eight games, including three Big 12 Conference contests.

Drew and his overachieving Bears finished the season 8-21 and won over the hearts of Baylor fans and basketball fans alike with their scrappy play and no-quit attitudes. The team exceeded all expectations and Drew was praised for his efforts and mentioned in Big 12 Coach of the Year discussions.

In his second season in 2004-2005 Drew took the court with the nation's most inexperienced team, having returned just one scholarship player—Tommy Swanson—from his first campaign. The Bears fought their way to a better record than the previous season, 9-19, including an impressive 73-72 road upset at Purdue.

Success in the basketball world runs strong in the Drew family, from Scott (head coach at Baylor) and brother Bryce (former NBA player and current Valpo assistant coach) to father Homer (head coach at Valparaiso).

Drew came to Baylor after a decade coaching at Valparaiso University, the final year as head coach. He led the Crusaders to a 20-11 record and into the National Invitation Tournament in 2002-2003. Valpo earned the Mid-Continent Conference regular season championship with a 12-2 league record in 2003.

The previous nine seasons, Drew served as an assistant at Valpo under his father, the legendary Homer Drew. He was promoted to associate head coach for the 2001-2002 season. Drew coached his father's 200th win at Valpo (against Oakland on Jan. 27, 2001) when Homer was ill.

In 10 seasons at Valpo, Scott Drew helped lead the team to six NCAA Tournament berths, including the magical 1997-1998 squad that shocked the nation by advancing to the Sweet 16. Valpo made five straight NCAA appearances from 1996-2000.

The younger Drew is recognized as an outstanding recruiter and was responsible for three national top 20 recruiting classes during his last five years at Valpo.

Drew was named the 1998-99 National Recruiter of the Year by Court Vision and helped produce what HoopScoop named the nation's sixth-best recruiting class in 2001 (per average talent), the 13th-best in 1999 (per average talent) and the 27th-best in 2003 (per average talent), a class that included three top 100 national recruits.

Drew was part of the coaching staff that led Valpo to nine straight Mid-Continent Conference championships, including dual



regular season and tournament titles in 1994-95, 1995-96, 1996-97, 1997-98, 1998-99 and 2001-2002. The Crusaders were regular season champions in 2000-2001 and 2002-2003, and won the conference tournament in 2000.

Drew was the driving force behind Valpo's international pipeline that produced more than 10 players from Europe, Africa and South America from 1995 to 2003. He has European coaching experience, having served as head coach of the Athletes In Action team which toured Croatia and Bosnia in the summer of 1997. In August 1995, Drew assisted the AIA team that traveled to Germany, Macedonia, Bulgaria and Greece.

Drew is a current member of the National Invitation Tournament committee and has previously served as a first vice president for the NABC Assistant Coaches Committee.

A 1993 graduate of Butler University with a Bachelor of Liberal Arts degree, Drew earned a master's degree from Valparaiso in 1994. Drew worked with Butler's men's basketball program from 1991-93.

Drew and his wife Kelly are the parents of one daughter, Mackenzie.

THE DREW WORKSHEET

Years	School	Conf. (Pct.)	Conf. Finish	Overall (Pct.)	
2002-03	Valparaiso	12-2 (.857)	1st Mid-Con	20-11 (.645)	NIT
TOTAL (1 season)		12-2 (.857)		20-11 (.645)	
2003-04	Baylor	3-13 (.188)	11th Big 12	8-21 (.276)	
2004-05	Baylor	1-15 (.063)	12th Big 12	9-19 (.321)	
TOTAL (2 seasons)		4-28 (.125)		17-40 (.298)	
VALPARAISO (1 year)		12-2 (.857)	1 conf. title	20-11 (.645)	1 NIT appearance
BAYLOR (2 years)		4-28 (.125)		17-40 (.298)	
CAREER (3 years)		17-30 (.362)	1 conf. title	37-51 (.420)	1 postseason app.

2005 2006 BAYLOR BASKETBALL

HEAD COACH SCOTT DREW

BASKETBALL STAFF



DREW vs. ALL OPPONENTS

Opponent	Career Baylor Valpo		
	W-L	W-L	W-L
Arkansas-Pine Bluff	1-0	1-0	-
Belmont	1-0	-	1-0
BYU-Hawai'i	0-1	0-1	-
Central Michigan	1-0	-	1-0
Charlotte	1-0	-	1-0
Chicago State	4-0	1-0	3-0
Cincinnati	0-1	-	0-1
Colorado	1-1	1-1	-
Hillsdale College	1-0	1-0	-
Indiana-Purdue	2-1	-	2-1
Indiana State	1-0	-	1-0
Iowa	0-1	-	0-1
Iowa State	1-2	1-2	-
Kansas	0-2	0-2	-
Kansas State	0-2	0-2	-
Louisiana-Monroe	1-1	1-1	-
Loyola Chicago	0-1	-	0-1
Maryland-Eastern Shore	1-0	1-0	-
Midwestern State	1-0	1-0	-
Missouri	0-3	0-2	0-1
Missouri-Kansas City	2-1	-	2-1
Nebraska	0-2	0-2	-
North Texas	0-1	0-1	-
Northern Illinois	2-0	1-0	1-0
Notre Dame	0-1	-	0-1
Oakland	2-0	-	2-0
Oklahoma	0-4	0-4	-
Oklahoma State	0-4	0-4	-
Oral Roberts	1-1	-	1-1
Prairie View A&M	1-0	1-0	-
Purdue	1-2	1-1	0-1
Samford	1-0	-	1-0
San Jose State	0-1	0-1	-
Savannah State	1-0	1-0	-
SMU	0-2	0-2	-
Southern (La.)	1-0	1-0	-
Southern Utah	2-0	-	2-0
Stephen F. Austin	0-1	0-1	-
Syracuse	0-1	-	0-1
Texas	0-4	0-4	-
Texas A&M	2-2	2-2	-
Texas A&M-Corpus Christi	1-1	1-1	-
Texas-Pan American	0-1	0-1	-
Texas-San Antonio	0-1	0-1	-
Texas Southern	1-0	1-0	-
Texas Tech	0-4	0-4	-
Western Illinois	2-0	-	2-0
Wisconsin-Milwaukee	0-1	-	0-1
TOTAL	37-51	17-40	20-11

VALPARAISO

2002-03 (20-11, 12-2 MCC - 1st)

11/24 at Syracuse	.66-81	L
11/26 INDIANA STATE	.81-56	W
11/30 NORTHERN ILLINOIS	.78-67	W
12/2 at Cincinnati	.50-76	L
12/7 at Loyola	.62-80	L
12/11 at Wisconsin-Milwaukee	.61-75	L
12/14 SAMFORD	.87-79	W 2OT
12/20 BELMONT	.83-65	W
12/23 CENTRAL MICHIGAN	.65-51	W
12/28 at Purdue	.55-87	L
12/30 at Missouri	.47-65	L
1/4 NOTRE DAME	.53-55	L
1/11 • WESTERN ILLINOIS	.74-57	W
1/16 • SOUTHERN UTAH	.74-44	W
1/18 • CHICAGO STATE	.80-48	W
1/23 • at IUPUI	.72-62	W
1/25 • at Oakland	.72-70	W
1/30 • ORAL ROBERTS	.84-71	W
2/1 • MISSOURI-KANSAS CITY	.68-71	L OT
2/4 CHARLOTTE	.73-59	W
2/8 • at Western Illinois	.74-62	W
2/13 • at Chicago State	.81-70	W
2/15 • at Southern Utah	.69-61	W
2/20 • OAKLAND	.81-65	W
2/22 • IUPUI	.77-71	W
2/27 • at Missouri-Kansas City	.75-63	W
3/1 • at Oral Roberts	.75-89	L
3/9 vs. Chicago State*	.82-62	W
3/10 vs. Missouri-Kansas City*	.71-50	W
3/11 vs. IUPUI*	.64-66	L
3/17 at Iowa*	.60-62	L

* Mid-Con Tournament (Kansas City, Mo)

^ National Invitation Tournament

BAYLOR

2003-04 (8-21, 3-13 Big 12 - 11th)

11/22 TEXAS SOUTHERN	.72-59	W
11/25 STEPHEN F. AUSTIN	.57-79	L
11/29 TAMU-CORPUS CHRISTI	.69-62	W
12/3 SMU	.62-66	L
12/6 MIDWESTERN STATE	.97-72	W
12/9 at North Texas	.69-73	L
12/13 UT-SAN ANTONIO	.45-53	L
12/16 LOUISIANA-MONROE	.85-79	W 2OT
12/19 at BYU-Hawai'i*	.67-72	L
12/20 vs. San Jose State*	.64-79	L
12/22 vs. Northern Illinois*	.69-59	W
1/3 PURDUE NR-#21 (FSNSW)	.65-76	L
1/6 UT-PAN AMERICAN	.54-55	L
1/10 • at Texas NR-#16 (FSNSW)	.57-79	L
1/17 • TEXAS TECH NR-#22 (FSNSW)	.66-75	L
1/21 • at Nebraska	.47-76	L
1/24 • IOWA STATE (ESPN+)	.63-59	W
1/28 • OKLAHOMA NR-#25 (FSNSW)	.67-78	L
1/31 • at Colorado	.66-81	L
2/3 • at Texas Tech NR-#18	.63-83	L
2/7 • TEXAS A&M (FSNSW)	.72-64	W
2/10 • TEXAS NR-#11 (FSNSW)	.58-84	L
2/14 • at Okla. St. NR-#10 (ESPN+)	.58-91	L
2/18 • at Kansas NR-#20	.54-74	L
2/21 • MISSOURI (ESPN+)	.66-70	L
2/25 • at Texas A&M	.67-61	W OT
2/28 • OKLA. ST. NR-#6 (ESPN+)	.65-72	L
3/3 • KANSAS STATE	.62-64	L
3/6 • at Oklahoma	.41-46	L

* Hawai'i Surf'N Slam (Laie, Hawai'i)

ALL-CONFERENCE SELECTIONS

UNDER SCOTT DREW

ALL-MID-CON • Valparaiso

2002-2003 3 (1 1st, 1 2nd, 1 hm)

2002-2003 Raitis Grafts (1st team)

2002-2003 Stalin Ortiz (2nd team)

2002-2003 Joaquim Gomes (hm)

ALL-BIG 12 • Baylor

2003-present 3 (2 3rd, 1 hm)

2003-2004 Harvey Thomas (3rd team)

2003-2004 Terrance Thomas (hm)

2004-2005 Aaron Bruce (3rd team)

2002-2005 6 (1 1st, 1 2nd, 2 3rd, 2 hm)

2004-05 (9-19, 1-15 Big 12 - 12th)

11/22 HILLSDALE COLLEGE	.91-52	W
11/24 LOUISIANA-MONROE	.61-75	L
12/1 ARKANSAS-PINE BLUFF	.63-53	W
12/4 TAMU-CORPUS CHRISTI	.58-73	L
12/16 at SMU	.43-77	L
12/18 SOUTHERN	.75-62	W
12/22 MD.-EASTERN SHORE	.97-73	W
12/28 PRAIRIE VIEW A&M	.84-52	W
12/30 at Purdue (ESPN+)	.73-72	W
1/3 CHICAGO STATE	.77-59	W
1/9 • at Texas NR-#11 (FSNSW)	.60-79	L
1/13 SAVANNAH STATE	.86-50	W
1/15 • OKLAHOMA NR-#25 (FSNSW)	.61-65	L
1/19 • COLORADO (ESPN Classic)	.67-59	W
1/22 • at Okla. St. NR-#5 (ESPN+)	.53-82	L
1/25 • KANSAS NR-#6 (FSNSW)	.66-86	L
1/29 • at Texas A&M (FSNSW)	.62-74	L
2/1 • at Iowa State (CTN)	.51-77	L
2/5 • OKLAHOMA ST. NR-#10 (CTN)	.63-81	L
2/9 • at Texas Tech NR-#23 (ESPN+)	.67-83	L
2/12 • NEBRASKA (FSNMW)	.63-74	L
2/16 • at Missouri (MSN)	.53-60	L
2/19 • TEXAS (ESPN+)	.60-75	L
2/23 • at Kansas State (FSNMW)	.69-80	L
2/26 • at Oklahoma NR-#22 (ESPN+)	.60-103	L
3/2 • TEXAS TECH	.66-72	L
3/5 • TEXAS A&M (ESPN+)	.76-84	L
3/10 * vs. Iowa State (ESPN+)	.57-77	L

* Big 12 Tournament (Kansas City, Mo.)



THE DREW FAMILY

“
THE DREWS ARE ONE OF THOSE NAMES THAT REPRESENTS ALL THAT'S GOOD ABOUT COLLEGE BASKETBALL.
 ”

-LINDY'S PREVIEW 2003-04



“
(SCOTT) DEFINITELY COMES FROM ABOUT THE BEST STOCK THERE IS. HIS FAMILY IS AS SOLID AS A ROCK.
 ”

-DONN NELSON
 DALLAS MAVERICKS

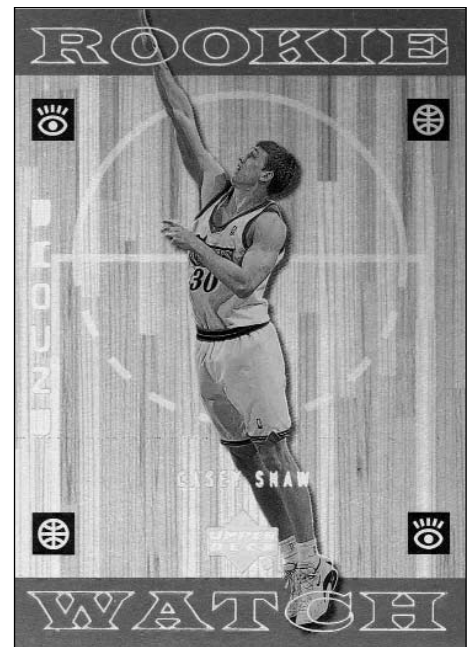
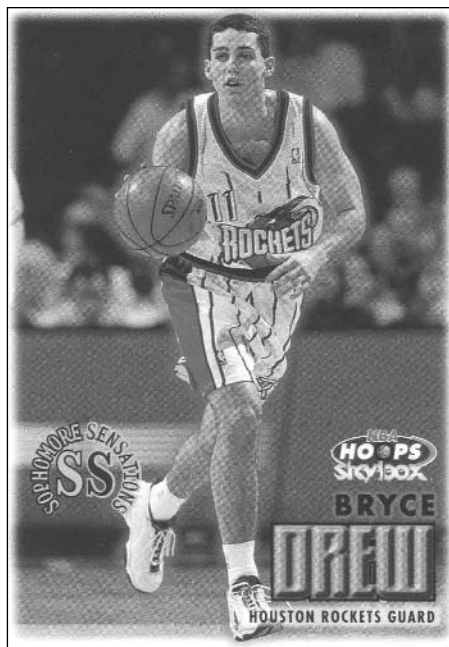
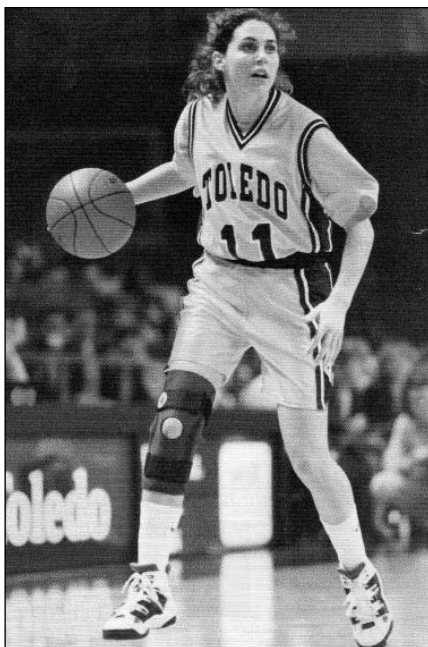
In the basketball world, the Drew name is synonymous with winning. Baylor head coach **Scott Drew** spent a decade coaching at Valparaiso, helping lead the Crusaders to six NCAA appearances in nine seasons as an assistant under his father **Homer**, the winningest coach in Valpo history. Also, Scott's brother **Bryce**, sister **Dana**, and brother-in-law **Casey Shaw** were each highly decorated collegiate players.

- **Homer Drew**, past and present head coach at Valparaiso, served 14 seasons as head coach at Valpo before handing over the reins to Scott for the 2002-

2003 season. When Scott left Valpo for Baylor, Homer returned to coach the Crusaders.

- **Bryce Drew**, a 1998 first-round pick by the Houston Rockets, played six seasons in the NBA and is now an assistant at Valpo under his father. Bryce is best known for hitting the game-winning shot to beat Mississippi in the first round of the 1998 NCAA Tournament. That season, Bryce earned all-conference honors for the third straight season as Valpo advanced to the Sweet 16.

- **Dana Drew-Shaw** was a two-time MAC Player of the Year at Toledo. She was MAC all-tournament three times, the only player in MAC history to win the award more than once, and was a two-time first-team Academic All-American.
- **Casey Shaw** finished his career at Toledo in the top five in career points and rebounds and was a 1998 second-round draft choice of the Philadelphia 76ers. A three-time all-conference selection, Shaw was named third-team Academic All-America as a senior.





MATTHEW DRISCOLL

JOINED BAYLOR: August 2003

Slippery Rock, 1992

ASSISTANT COACH

Matthew Driscoll is in his third year as an assistant basketball coach at Baylor University. Driscoll was the first assistant to join the Bears' current staff, accompanying head coach Scott Drew from Valparaiso.

Driscoll, who spent a total of seven weeks at Valpo before coming to Baylor, spent the previous five seasons as an assistant at Clemson under Larry Shyatt from 1998 to 2003. While assisting Shyatt, Driscoll helped Clemson to the NIT championship game in 1999. During the 1998-1999 campaign, the Tigers won 20 games, including four in the NIT, before losing to California by one point in the championship on the final possession. Driscoll also played a part in Clemson's three victories over North Carolina during a five-year period, including an upset over the top-ranked Tar Heels. In 2002-2003, the Tigers compiled a 15-13 record.

Prior to his stint at Clemson, Driscoll was an assistant coach for Shyatt at Wyoming

during the 1997-1998 campaign. The Cowboys recorded a 19-9 mark and earned a berth in the NIT that season. Wyoming won two games against top-10 teams that year, including an upset of national finalist Utah.

Driscoll also has head coaching experience, guiding LaRoche College in Pittsburgh, Pa., from 1993-1997. Prior to becoming the head coach at LaRoche, he served as a volunteer assistant at Slippery Rock University. He also was an assistant coach at Seneca Valley High School in Zelienople, Pa., from 1991-1993 and an assistant coach at Butler (Pa.) County Community College from 1990-1991. Driscoll's career began at his prep alma mater, as he served as head boys basketball coach at Pittsburgh's Northgate High School from 1988-1990.

A former president of the National Association of Basketball Coaches (NABC)

Assistant Coaches Board of Directors, Driscoll has been active in the organization since 1994 and a member of the board since 1998.

A 1992 graduate of Slippery Rock with a Bachelor of Science degree in education, Driscoll has earned a certification in elementary education.

Driscoll and his wife Carrie have two sons, Chase and Paxton.

FACT SHEET



PERSONAL

Birthdate: Dec. 14, 1964

Birthplace: Pittsburgh, Pa.

Family: Wife, Carrie; sons

Chase (10) and Paxton (7)

EDUCATION

Slippery Rock, 1992

COACHING EXP.

1988-90 Northgate HS [head coach]

1990-91 Butler (Pa.) County CC

1991-93 Seneca Valley HS

1993 Slippery Rock

1993-97 LaRoche Col. [head coach]

1997-98 Wyoming

1998-03 Clemson

2003 Valparaiso

2003- Baylor

POSTSEASON EXP.

1998 NIT (first round)

1999 NIT (runner-up)





MARK MOREFIELD

JOINED BAYLOR: August 2003

Valparaiso, 1998

ASSISTANT COACH

Mark Morefield's association with Scott Drew dates back 12 years, including the last two seasons at Baylor.

Morefield is in his third season serving as the Bears' recruiting coordinator and assistant coach, and his duties include handling the offense, supervising individual workouts and scouting.

A proven recruiter, Morefield was named one of the nation's top 25 recruiters by Rivals.com in the summer of 2005. Morefield has contributed to the signing of four top-20 national recruiting classes over the past seven years, two at Valpo and the last two at Baylor (No. 17 in 2005 and No. 10 in 2004 at Baylor; No. 6 in 2001 and No. 13 in 1999 at Valparaiso – rankings by HoopScoop).

A product of the Valparaiso basketball program, Morefield spent 2002-2003 as an assistant during Drew's one season as Valpo's head coach. The previous four seasons, the two were fellow assistants on the Valparaiso staff of Homer Drew, Scott's father.

Morefield logged a total of nine seasons with Valparaiso basketball, the last five as an assistant coach. In those five years, Valpo went to three NCAA Tournaments and one NIT. Morefield served as Valpo's administrative assistant coach in 1998-1999 and as a student assistant during the 1996-1997 and 1997-1998 campaigns after working as a team manager as a freshman and sophomore.

He was part of the staff that guided Valpo to Mid-Continent Conference regular season championships and tournament championships in 1998-1999 and 2001-2002, as well as regular season titles in 2000-2001 and 2002-2003 and a tournament title in 2000.

In the summer of 1999, Morefield was an assistant coach for an Athletes In Action team that toured Poland and Croatia. Morefield was also an assistant coach for an AIA team that played on the Ivory Coast of Africa in 2001. Players on these AIA teams included Milo Stovall of Valpo, Dan Dickau of Gonzaga, Ryan Sears of Creighton, Solomon Hughes of California and Billy Knight of UCLA.

In addition to his duties at Valpo in 1997-1998, Morefield served as freshman basketball coach and varsity assistant at Michigan City High School in Indiana. In the summers of 1996 and 1997, he worked basketball camps at Notre Dame and Michigan. Morefield also served as the director of the Valparaiso boys basketball camps.

Morefield graduated from Valparaiso in 1998 with a Bachelor of Arts in individualized major with a course concentration in sports marketing.

FACT SHEET



PERSONAL

Birthdate: April 11, 1976

Birthplace: Michigan City, Ind.

EDUCATION

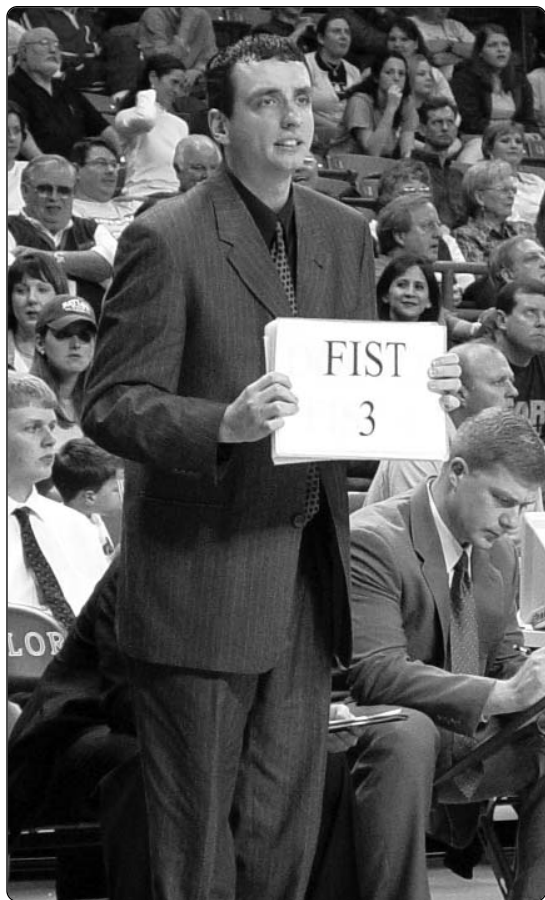
Valparaiso, 1998

COACHING EXP.

1997-98 Michigan City HS
 1999, 01 Athletes in Action (summer)
 1998-03 Valparaiso
 2003- Baylor

POSTSEASON EXP.

1997 Mid-Con Tourn. champs
 1997 NCAA Tournament
 1998 Mid-Con Tourn. champs
 1998 NCAA Tournament
 1999 Mid-Con Tourn. champs
 1999 NCAA Tournament
 2000 Mid-Con Tourn. champs
 2000 NCAA Tournament
 2002 Mid-Con Tourn. champs
 2002 NCAA Tournament
 2003 NIT (first round)





JEROME TANG

JOINED BAYLOR: September 2003

ASSISTANT COACH

Jerome Tang is in his third year as an assistant at Baylor, following 10 seasons as head coach at nationally recognized Heritage Christian Academy in Cleveland, Texas.

In his decade of service at Heritage Christian, Tang led the Eagles to four state championships and built the Eagles into one of the state's TAPPS powerhouses. His squad gained national attention in 2001, when one of Tang's Eagles, junior Cedrick Hensley, scored 101 points.

Feeding off that success, Tang and Heritage Christian became known for pro-

ducing Division I athletes. Heritage Christian's most-publicized recruit during Tang's tenure was Vakeaton "Von" Wafer, a 2003 McDonald's All-American who played at Florida State and was drafted with the 39th pick by the Los Angeles Lakers in the 2005 NBA draft.

Tang's last two squads at HCA featured other Division I signees in Cedrick Hensley (Houston), Elijah Miller (Houston), Marlon Pompey (Texas A&M), Lamar Hurd (Oregon State), Tim Mayes (Richmond) and Tyler Jones (St. John's).

Tang was also athletic director at Heritage

Christian, a birth-through-high school private school that boasts just 145 students and just 30 high school students (10th-12th grades). Away from the gym, Tang served as youth pastor at First Assembly of God.

Tang and his wife Careylyen are the parents of two, son Seven and daughter Aylyn. Tang is the legal guardian of brothers Lamar and Richard Hurd. Lamar Hurd. Lamar attends

FACT SHEET



PERSONAL

Birthdate: Oct. 7, 1966

Birthplace: San Fernando, Trinidad, West Indies

Family: Wife, Careylyen; son Seven and daughter Aylyn

COACHING EXP.

1993-03 Heritage Christian

Academy [head coach]

2003- Baylor

PLAYING EXP.

1985-86 North Central Bible Col.

1987-88 Normandale CC



Oregon State, Richard is a sophomore forward at Baylor.





STEPHEN BROUGH

JOINED BAYLOR: September 2003

Miami, 1996

DIRECTOR OF OPERATIONS

Stephen Brough is in his third season as Baylor's director of basketball operations.

Brough's duties on the Baylor staff include scheduling, producing recruiting literature and assisting with team travel.

Prior to joining the Bears' staff, Brough spent the 2002-2003 season as an assistant coach at Wright State. His responsibility was recruiting, as well as scouting and on-court

instruction. Brough's efforts contributed to Wright State's 2003 recruiting class being rated among the top 40 nationally by HoopScoop.

Prior to his time at Wright State, Brough served six years at his alma mater, Miami University. While an undergraduate student he worked as a student manager with the men's basketball team and during grad

school became the team's administrative assistant, arranging travel plans, assisting with scouting reports, conducting film exchange and assisting with camp direction. Brough was at Miami during the Redhawks' Sweet 16 run in 1999 and worked with future NBA players Ira Newbie (Cavaliers) and Wally Szczerbiak (Timberwolves).

In July 2000, he moved into a position as assistant coach with Miami's women's team, a role he served in for two seasons before heading to Wright State. In two seasons there, Brough worked with developing the team's post players, gameplanning, scouting and carried an increased role in recruiting.

A native of Toledo, Ohio, Brough received bachelor's degrees in accounting and organizational behavior from Miami in 1996. He went

FACT SHEET



PERSONAL

Birthdate: July 26, 1974

Birthplace: Toledo, Ohio

EDUCATION

Miami, 1996

Miami, 1999 [Master's]

COACHING EXP.

2000-02 Miami (Ohio) women

2002-03 Wright State

2003- Baylor



on to earn his master's of arts in teaching (secondary education) in 1999, also from Miami.





PAUL MILLS

JOINED BAYLOR: October 2003

Texas A&M, 1996

COORDINATOR OF OPERATIONS

Paul Mills is in his third season as Baylor's coordinator of men's basketball operations.

Mills' responsibilities include overseeing opponent scouting, assisting in coordination of underclassman recruiting and aiding in the daily administration of the basketball program.

Mills also directs the Scott Drew Basketball camps. He has worked more than 100 basketball camps over the past 10 years. He has been part of the prestigious Nike All-American Camp, Pete Newell Big Man Camp and Rick Majerus's Elite Camp.

Prior to joining the Baylor staff, Mills served as coordinator of men's basketball at Rice in 2002-2003. The Owls finished the year 19-10, the school's second-best record

in the previous 48 seasons, and placed third in the WAC.

Mills served as a head coach in the Texas high school ranks before joining the staff at Rice. Most recently, he served as the head coach at Fort Bend Baptist Academy from 1999-2002, guiding the school to its first-ever appearance in the Final Four of the TAPPS 4A state tournament during his final season. Before that, Mills was the head coach at North Belt Christian from 1996-1999, leading the team to a 63-17 record during his three-year tenure. Mills' teams captured four district championships in his six seasons as a high school coach and he coached seven players who advanced to the collegiate level.



Mills was named TAPPS 4A South Region coach of the year and four times received district coach of the year awards. Mills served on the board of directors of the Texas Association of Basketball Coaches (TABC) and as a board member of the Greater Houston Private School Classic before moving to the collegiate ranks.

A Houston native, Mills was an all-state basketball player

FACT SHEET



PERSONAL

Family: Wife, Wendy; daughter Audrey

EDUCATION

Texas A&M, 1996

COACHING EXP.

1996-99 North Belt Christian [H.C.]

1999-02 Ft. Bend Bapt. Acad. [H.C.]

2002-03 Rice

2003- Baylor



before graduating from MacArthur High School in Houston. He signed with Southern Nazarene University in Bethany, Okla., where he played as a freshman for one season before an injury forced him to transfer to Texas A&M. He earned his bachelor's degree in finance from Texas A&M in 1996.

Mills is married to the former Wendy Scott. The couple has one daughter, Audrey.



KHALIL COLTRAIN

HEAD BASKETBALL TRAINER

Joined Baylor Athletics: August 1997

TCU, 1994

Khalil Coltrain is in his ninth season at Baylor and his fourth as head trainer for men's basketball.

In his first five years at Baylor, Coltrain worked with the nationally ranked baseball program. After three seasons as a graduate assistant trainer on the baseball staff, he spent two seasons as a full-time trainer

and director of baseball operations, responsible for handling travel plans and coordinating gameday operations.

Prior to joining Baylor in 1997, Coltrain served as athletic trainer and camp manager for Universal Cheerleaders Association for nine years, in which he was responsible for coordinating training efforts at more than 100 summer cheerleading camps. From 1995-1997, he was the head athletic trainer at Wilmer-Hutchins High School in Dallas.

As a student at TCU, Coltrain spent four years as a student athletic trainer working with the Horned Frogs' football, track and field, soccer and swimming programs.

Coltrain received a bachelor's degree in physical education from TCU in 1994. In 2000 he earned a master's degree in health, human performance and recreation from Baylor. He is certified by the National Athletic Trainers Association and licensed by the Texas Advisory Board of Athletic Trainers.

Coltrain and his wife, the former Leslie Jones of Kaufman, Texas, are the parents of one daughter, Emma.



CHARLIE MELTON

ASSOCIATE STRENGTH AND CONDITIONING COACH

Joined Baylor Athletics: June 2005

Memphis, 1998

Charlie Melton is in his first season working with the Baylor men's basketball team as the associate strength and conditioning coach. He also serves in the capacity of research coordinator with Baylor's Exercise and Sport Nutrition Lab.

Melton joined the Bears in June 2005 after spending four seasons as a

full-time strength coach at Florida State University. He spent one season as a graduate assistant for FSU's football program before being hired as a full-time strength coach in 2001.

A 1998 graduate of the University of Memphis, Melton earned a master's degree in Exercise and Sport Science from his alma mater in 2000. He worked as a graduate assistant in the strength department under Todd Stroud and with Memphis' Exercise and Sport Nutrition Research Lab under current Baylor professor Dr. Richard Kreider from 1998 to 2000.

An accomplished weightlifter, Melton placed third and fourth in the Collegiate Weightlifting National Championships in 1997 and 1998, respectively.

Melton is certified through the Collegiate Strength and Conditioning Coaches Association (CSCCA). He has also completed the certification requirements of Level 1 club coach through USA Weightlifting (USAW).

Melton and his wife, the former Crystal Popek, have two children; daughter Norah and son Robbie.



HEATH NIELSEN

DIRECTOR OF MEDIA RELATIONS

Joined Baylor Athletics: May 2000

Utah State, 1994

Heath Nielsen is in his sixth year as Baylor's director of athletic media relations.

In addition to serving as the media contact for men's basketball and assisting with football, Nielsen is responsible for supervising the day-to-day operation of Baylor's media relations office and staff. He served as Baylor's interim assistant AD for media relations from August to October 2003.

Nielsen came to Baylor from New Mexico State, where he spent two

years as assistant AD for media relations. At NMSU, Nielsen was responsible for the media relations operation for a 15-sport Division I athletic program.

Prior to New Mexico State, Nielsen spent four and a half years as assistant director of athletic media relations at Mississippi State. At MSU, Nielsen's duties involved serving as the main media contact for the football, baseball and soccer programs. Nielsen is a 1994 graduate of Utah State with a B.A. degree in journalism and a minor in Spanish. He spent three years as a student assistant in USU's sports information office.

A native of Tucson, Ariz., Nielsen has worked 19 NCAA championship events and in 2002 was publicist for the Big 12 Men's Basketball All-Star's tour of Scandinavia. He has received numerous awards for his publications, including his 1996 MSU baseball media guide that was judged "Best in the Nation." He is a member of the College Sports Information Directors of America (CoSIDA), the Football Writers Association of America, and the United States Basketball Writers Association.

Nielsen is married to the former Deena Thurston of Logan, Utah. They are the parents of three sons, H, Kye and Sayer.



PATRICK CONNELLY
Graduate Manager



KAREN CRAIG
Administrative Asst.



RUSS RENEAU
Media Relations Asst.

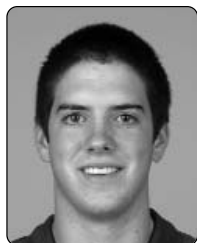


MARK WIBLE
Chaplin

2005 2006 BAYLOR BASKETBALL

SUPPORT STAFF

BASKETBALL STAFF



TY BEARD
Student Manager



BEAU BUFTON
Student Manager



RACHEL CHANDLER
Student Trainer



LAURA COX
Student Manager



REID COX
Student Manager



KEVIN GOLL
Student Manager



STANTON HUFFMAN
Student Manager



SAM PATTERSON
Student Manager



WILL PHIPPS
Student Manager



RYAN PRYOR
Student Manager



MATT RODGERS
Student Manager



JENN WELCH
Student Manager



BRETT WHITTINGTON
Student Manager



DREW WILLIAMSON
Student Manager



ADAM ZEIGLER
Student Media Relations

Not pictured: Noah Heflin, student manager

