



2011-2012 BAYLOR BASKETBALL GAME NOTES

Chris Yandle, Associate Director of Athletic Communications • Office: (254) 710-3638 • Cell: (254) 652-9068
E-mail: christopher_yandle@baylor.edu • Twitter: @BaylorMBB • Facebook.com/BaylorAthletics • www.BaylorBears.com

GAME INFORMATION

Date / Time: Sat., Feb. 4 / 12:47 p.m. CST
Site: Stillwater, Okla. / Gallagher-Iba Arena (13,611)
TV: Big 12 Network (Central Texas: Time Warner 165, Grande 15)
Also available on ESPN Full Court (pay-per-view)
Talent: Dave Armstrong (pxp), Bryndon Manzer (analyst)
Radio: Baylor-IMG College / ESPN Central Texas
Talent: John Morris (play-by-play), Pat Nunley (analyst)
Satellite Radio: Sirius / XM 85 (OSU broadcast)
Live Stats: BaylorBears.com
Live Video: ESPN3 (WatchESPN.com)
Live In-Game Blog: None
Twitter Updates: twitter.com/BaylorMBB
Series: Oklahoma State leads, 50-18
Waco: OSU leads, 15-14
Stillwater: OSU leads, 24-3
Neutral Site: OSU leads, 11-1
First Meeting: 1917-18 — OSU, 24-20
Last Meeting: Jan. 14, 2012 — BU, 106-65
Drew vs. OSU: 6-11

SCHEDULE / RESULTS

DATE	BU	OPP	OPPONENT	TV	RESULT
N11	12/12	—	TEXAS SOUTHERN	W	77-57
N13	12/12	—	JACKSON STATE	W	92-59
N15	11/12	rvl.	SAN DIEGO STATE	ESPN	W 77-67
N22	9/10	—	SOUTH CAROLINA ST.	W	70-50
N23	9/10	—	UT ARLINGTON	FSSW	W 75-65
N29	7/8	—	PRAIRIE VIEW A&M	FSSW	W 90-54

DATE	BU	OPP	OPPONENT	TV	RESULT
D4	7/8	—	at Northwestern	BTN	W 69-41
D14	6/7	—	BETHUNE-COOKMAN	FSSW	W 69-42
D17	6/7	—	at BYU	BYUtV	W 86-83
D19	6/7	—	PAUL QUINN	W	95-43

Continental Tire Las Vegas Classic (Orleans Arena — Las Vegas, Nev.)

D22	6/7	—	vs. Saint Mary's	ESPN3	W 72-59
D23	6/7	—	vs. West Virginia	ESPN	W 83-81

The Showcase (American Airlines Center — Dallas, Texas)

D28	6/7	15/14	vs. Mississippi State	ESPN2	W 54-52
-----	-----	-------	-----------------------	-------	---------

DATE	BU	OPP	OPPONENT	TV	RESULT
J2	4/5	rvl.	■ TEXAS A&M	ESPNU	W 61-52
J7	4/5	—	■ at Texas Tech	BIG 12	W 73-60
J10	4/4	18/18	■ at Kansas State	FSSW+	W 75-73
J14	4/4	—	■ OKLAHOMA STATE	ESPN2	W 106-65
J16	3/3	7/7	■ at Kansas	ESPN	L 74-92
J21	3/3	5/5	■ MISSOURI	ESPN	L 88-89
J24	6/7	—	■ at Oklahoma	BIG 12	W 77-65
J28	6/7	—	■ TEXAS	CBS	W 76-71

DATE	BU	OPP	OPPONENT	TV	TIME
F1	6/6	—	■ at Texas A&M	ESPN2	W 63-60
F4	6/6	—	■ at Oklahoma State	BIG 12	12:47 p.m.
F8	—	—	■ KANSAS	ESPN2	6 p.m.
F11	—	—	■ at Missouri	BIG 12	12:47 p.m.
F13	—	—	■ IOWA STATE	ESPNU	6 p.m.
F18	—	—	■ KANSAS STATE	BIG 12	12:47 p.m.
F20	—	—	■ at Texas	ESPN	8 p.m.
F25	—	—	■ OKLAHOMA	BIG 12	12:47 p.m.
F27	—	—	■ TEXAS TECH	ESPNU	8 p.m.

DATE	BU	OPP	OPPONENT	TV	TIME
M3	—	—	■ at Iowa State	CTN	6 p.m.

All times Central and Subject to change
Rankings: AP/USA TODAY
■ Big 12 Conference game

GAME 23

STILLWATER, OKLA. (GALLAGHER-IBA ARENA)



6/6 **BAYLOR BEARS** (20-2, 7-2)

Head Coach: Scott Drew (Butler, 1993)
Career Record: 167-129 (10th season), **Record at BU:** 147-118 (9th season)



NR/NR **OKLAHOMA STATE COWBOYS** (11-11, 4-5)

Head Coach: Travis Ford (Kentucky, 1994)
Career Record: 266-194 (14th season), **Record at OSU:** 76-48 (4th season)

STORY LINES

- No. 6/6 Baylor (20-2, 7-2) seeks to complete its first regular-season series sweep of Oklahoma State (11-11, 4-5) in 90 years when it travels to Stillwater. Saturday's game will tip at 12:47 p.m. CST on the Big 12 Network.
- Saturday marks the 69th series meeting and the 34th in the Big 12 era. Oklahoma State leads the all-time series 50-18, and owns a 24-3 advantage in Stillwater. Baylor has won 6 of the last 10 meetings overall.
- Baylor hasn't won in Stillwater since Feb. 15, 2003, when it knocked off then-No. 14 Oklahoma State 74-72. Since then, Baylor has lost its last eight trips to Stillwater.
- Baylor is 20-3 all-time when ranked in the Top 10 — 17 of those wins have come this season. Baylor has been ranked in the Top 10 for a program-record 11 consecutive weeks.
- With its 63-60 win Feb. 1 at Texas A&M, Baylor secured its fourth 20-win campaign in the last five seasons under head coach **Scott Drew** — 2007-08 (21-11), 2008-09 (24-15), 2009-10 (28-8) and 2011-12 (20-2).
- Baylor is off to a program-best 20-2 start and is 7-2 in conference play for the first time since 1968-69.
- After posting a combined 6-48 record against Oklahoma and Oklahoma State in the first 13 seasons of the Big 12 Conference, Baylor has won 7 of its last 11 against the league's Sooner State schools.
- Baylor is 6-1 in games decided by 5 points or fewer this season — 5 of the 6 wins have been away from home.
- Baylor has made at least one 3-point field goal in 641 consecutive games — the second-longest active streak in the Big 12.
- Bob Cousy Award finalist **Pierre Jackson** has a knack for making big play after big play. In his first season at Baylor, Jackson has been a part of five go-ahead, game-tying or game-winning plays, including the game-winning 3-pointer Feb. 1 at Texas A&M.
- Jackson has 71 assists in the last 8 games (8.9 assists per game); he had 61 dimes in the first 14 games (4.4 per game).
- Senior F **Quincy Acy** ranks 17th in school history with 1,180 points. He also ranks second in career FG percentage (60.8), second in career blocks (158) and 18th in career rebounding (695).
- Baylor has held 16 opponents to fewer than 70 points. Since the start of the 2007-08 season, Baylor is 70-9 when holding opponents below the 70-point mark. Baylor is 103-25 in the **Scott Drew** era when holding opponents to fewer than 70 points.
- In his last 53 games, **Acy** has blocked 96 shots, an average of 1.81 blocks per game (62 blocks in his first 70 games at Baylor).
- 57 of sophomore G **Brady Heslip's** 69 field goals have been from 3-point range. Heslip has made at least one 3FG in 21 games.

UP NEXT

- Baylor returns home Feb. 8 to host Kansas on ESPN2. Earlier this season, Kansas handed Baylor its first loss — a 92-74 setback in Lawrence. Kansas leads the all-time series, 17-2.
- Wednesday's game will tip at 6:05 p.m. CST (**Jon Sciambi**, play-by-play; **Fran Fraschilla**, analyst).

BAYLOR PROJECTED STARTING LINEUP



	G • 55 • JR	G • 5 • SO	F • 30 • FR	F • 4 • SR	F • 1 • SO
	Pierre Jackson	Brady Heslip	Quincy Miller	Quincy Acy	Perry Jones III
PTS	12.6	9.7	12.6	12.5	14.7
REB	3.0	1.3	5.3	6.8	7.8
AST	6.0	44.2	48.4	2.3	55.3
STL	1.9	44.5	77.1	58.4	61.8
	3FG%	FT%	FG%	FT%	



Click to read the official Baylor Basketball Blog, Full Court Press



BAYLOR WEEKLY MEDIA PLANNER

6 MON	7 TUE	8 WED	9 THU	10 FRI	11 SAT	12 SUN
<p>Big 12 Coaches Teleconference 10:30 a.m. (Coach Drew)</p> <p>Media Availability 2 p.m.</p>	<p>No Media Availability</p>	<p>Kansas 6 p.m. (ESPN2)</p> <p>Postgame Press Conference <i>Baylor locker room is closed</i></p> <p>Scott Drew, approximately 20 minutes after game; players following Drew</p>	<p>Media Availability 2 p.m.</p>	<p>No Media Availability Travel Day</p>	<p>at Missouri 12:45 p.m. (Big 12 Network)</p> <p>Postgame Press Conference <i>Baylor locker room is closed</i></p> <p>Scott Drew, approximately 20 minutes after game; players following Drew</p>	<p>No Media Availability</p>

BAYLOR MEDIA WEBSITE

An all-in-one-place media page is can be found at Baylor's website at: <http://www.BaylorBears.com/ot/bay-media.html>. Among the information available at the site are links and pdfs of statistics, game notes, quick facts and directions as well as photo/logo downloads and video FTP information.

BIG 12 TELECONFERENCE

In conjunction with the Big 12 Conference, Baylor head coach **Scott Drew** will participate in the league's weekly teleconference on selected Mondays during the season: ~~Dec. 12, Jan. 2, Jan. 9, Jan. 16, Jan. 23, Jan. 30~~, Feb. 6, Feb. 13, Feb. 20, Feb. 27, March 5 and March 12 (postseason coaches only).

Media representatives wishing to participate in the teleconference should consult contact the league communications staff for further details.

A live audio stream of the teleconference can be heard at www.Big12Sports.com. A replay of the teleconference will be available after 4 p.m. CT the day of the teleconference.

WEEKLY INTERVIEWS

Head coach Scott Drew and Baylor players will be made available for interviews in person or by telephone on a regular basis during the season, at times to be announced.

All interviews with Baylor student-athletes must be coordinated through the Athletic Communications Office and requested with 24 hours advance notice.

Telephone interviews will be fulfilled at a time that does not interfere with the student-athlete's academic or practice schedule.

Please direct all interview requests to Associate Director **Chris Yandle** at christopher_yandle@baylor.edu.

PRACTICE COVERAGE

All Baylor practices are closed to the media and the public.

POSTGAME INTERVIEWS

Baylor University is committed to a policy of equal access for both male and female reporters and photographers.

The Baylor locker room is closed to the media. Coach Drew and player interviews will be conducted in the Ferrell Center's Media Center following the NCAA 10-minute cooling off period.

Media are asked to submit a list of player interview requests to **Chris Yandle** prior to the under-four media timeout in the second half.

The visiting SID will select the student-athletes to be interviewed in the postgame interview room.

BAYLOR VIDEO HIGHLIGHTS FTP SITE

Baylor provides broadcast-quality video of home game postgame highlights via FTP download. Contact Baylor Athletic Communications for more information.

SOCIAL MEDIA

In addition to following the most up-to-date information on Baylor's Official Athletics Site, www.BaylorBears.com, Baylor's official basketball blog — *Full Court Press* — offers behind-the-scenes insight into the Bears' basketball program.

Additionally, the Baylor Athletic Communication office runs the Official Twitter feeds for Baylor Athletics (@BaylorAthletics) and Baylor Basketball (@BaylorMBB).

QUICK HITS

- Baylor's Big 12 rankings: 1st in 3FG% (40.7), 1st in blocked shots (5.91), 1st in assists (16.00), 2nd in steals (8.36), 2nd in scoring offense (77.4), 2nd in FG% (49.0), 3rd in scoring defense (63.2), 3rd in scoring margin (+14.1), 3rd in FT% (74.1), 3rd in FG% defense (39.6), 3rd in rebounding margin (+5.2), 3rd in 3FG made (7.36), 4th in rebounding defense (32.0), 4th in assist-turnover ratio (1.09) and 5th in rebounding (37.3).
- Baylor's NCAA Rankings (thru games Jan. 29): 7th in 3FG%, 8th in FG%, 10th in blocked shots, 13th in scoring margin, 21st in assists, 23rd in scoring offense, 32nd in FT%, 37th in steals, 38th in FG% defense and 39th in rebounding margin.
- Baylor has trailed at the half only four times this season (Baylor is 2-2 in those contests).
- Baylor is 28-142 all-time against Top 25 teams, including an 11-48 mark in the **Scott Drew** era.
- Since the start of the 2007-08 season, Baylor is 111-49 and has made three postseason appearances (2008 NCAA, 2009 NIT, 2010 NCAA) and posted four 20-win seasons (135 wins in first 11 seasons of Big 12 era).
- Six players earned a GPA of 3.0 or higher during the fall 2011 semester, earning Big 12 Commissioner's Honor Roll honors — **Deuce Bello**, **Fred Ellis**, **Gary Franklin**, **Brady Heslip**, **Logan Lowery** and **Jacob Neubert** (Dean's List). Baylor also posted its highest team semester GPA in program history.
- Baylor has won 51 straight games when holding opponents to fewer than 60 points, including 10 this season.
- This year's senior class — **Quincy Acy**, **Fred Ellis** and **Anthony Jones** — have 90 career victories and need two more to become the winningest senior class in program history.
- Junior PG **Pierre Jackson** is one of 11 finalists for the 2012 Bob Cousy Collegiate Point Guard of the Year award. The annual honor, named for Hall of Famer and former Boston Celtic Bob Cousy, recognizes the top point guard in college basketball.
- Baylor is 54-17 — 53-15 in the **Drew** era — when ranked in the Associated Press Top 25, 47-12 when ranked in the *USA TODAY/ESPN* Coaches Top 25 and 45-11 all-time when ranked simultaneously in both polls.
- 4 of Baylor's 7 20-win seasons have come in the last 5 seasons — 2007-08 (21), 2008-09 (24), 2009-10 (28), 2011-12 (20).
- Baylor has been ranked for 45 weeks in program history — 42 of those weeks coming in the last 5 seasons.
- 7 of the Top 20 1,000-point scorers in program history hail from the **Scott Drew** era — all in the last 5 seasons (18 1,000-point scorers in first 101 seasons; 7 in the last 5 seasons).
- Baylor's frontline fivesome of senior F **Anthony Jones** (6-foot-10, wingspan: 7 feet, 2 inches), senior F **Quincy Acy** (6-foot-7, wingspan: 7 feet, 3 inches), sophomore F **Perry Jones III** (6-foot-11, wingspan: 7 feet, 2 inches), redshirt sophomore F **Cory Jefferson** (6-foot-9, wingspan: 7 feet) and freshman F **Quincy Miller** (6-foot-9, wingspan: 7 feet, 4 inches) has a combined wingspan of 35 feet, 11 inches (width of NCAA playing court is 50 feet).
- **Scott Drew** is tied with Kansas' Bill Self as the second-longest tenured head coach in the Big 12 Conference. **Drew**, who is in his ninth season at Baylor in 2011-12, is second only to Texas' Rick Barnes, who enters his 14th season in Austin.

2011-2012 BAYLOR BASKETBALL ROSTER

NO.	NAME	POS	HT	WT	CL.-EXP.	HOMETOWN (LAST SCHOOL)
0	Gary Franklin	G	6-2	195	So.-TR	Santa Ana, Calif. (Cal)
1	Perry Jones III	F	6-11	235	So.-1L	Duncanville, Texas (Duncanville HS)
2	Jacob Neubert	F	6-5	200	Jr.-1L	Waco, Texas (Midway HS)
3	Fred Ellis	F	6-6	220	Sr.-3L	Sacramento, Calif. (Sacramento HS)
4	Quincy Acy	F	6-7	235	Sr.-3L	Mesquite, Texas (Horn HS)
5	Brady Heslip	G	6-2	180	So.-TR	Burlington, Ontario (Boston College)
11	J'mison Morgan	F/C	6-11	250	Sr.-1L	Dallas, Texas (UCLA)
14	Deuce Bello	G	6-4	185	Fr.-HS	Greensboro, N.C. (Westchester Country Day School)
20	Logan Lowery	F	6-6	185	So.-TR	Kingwood, Texas (Centenary)
22	A.J. Walton	G	6-1	185	Jr.-2L	Little Rock, Ark. (Hall HS)
30	Quincy Miller	F	6-9	210	Fr.-HS	Chicago, Ill. (Westchester Country Day (N.C.) School)
34	Cory Jefferson	F	6-9	210	RSo.-1L	Killeen, Texas (Killeen HS)
41	Anthony Jones	F	6-10	195	Sr.-3L	Houston, Texas (Yates HS)
55	Pierre Jackson	G	5-10	180	Jr.-JC	Las Vegas, Nev. (College of Southern Idaho)

COACHING & SUPPORT STAFF

Head Coach: Scott Drew (Butler, 1993), 10th season overall, 9th season at Baylor

Assistant Coaches: Jerome Tang (Charter Oak State, 2007), 9th season at Baylor; Grant McCasland (Baylor, 1999), 1st season at Baylor;

Paul Mills (Texas A&M, 1996), 9th season at Baylor

Director of Operations: Tim Maloney (Manhattanville, 1982), 3rd season at Baylor

Director of Video Operations: Jared Nuness (Valparaiso, 2001)

Video Coordinator: Sam Patterson (Baylor, 2008)

Strength & Conditioning Coach: Charlie Melton (Memphis, 1998)

Athletic Trainer: David Chandler (Baylor, 1985)

BAYLOR IN THE RANKINGS

- Baylor remains at No. 6 in the latest AP Top 25, while moving up one spot to No. 6 in the latest *USA TODAY*/ESPN Top 25.
- Baylor has been ranked in the Top 10 for a program-record 11 consecutive weeks.

	PRE	N14	N21	N28	D5	D12	D19	D26	J2	J9	J16	J23	J30	F6	F13	F20
AP	12	11	9	7	6	6	6	6	4	4	3	6	6			
COACHES	12	12	10	8	7	7	7	7	5	4	3	7	6			

A WIN WOULD...

- Be its 10th win away from home this season.
- Be its first in Stillwater since 2003, snapping its eight-game Gallagher-Iba Arena losing streak.
- Mark Baylor's first regular-season series sweep of Oklahoma State since 1921-22.
- Improve its record to 19-50 all-time against Oklahoma State.
- Be its eighth in the last 12 games against the Big 12 Oklahoma schools.
- Improve **Scott Drew's** career record to 7-11 vs. Oklahoma State.
- Improve its program-best start to 21-2.
- Give Baylor its best conference start after 10 games (8-2) since 1947-48 (10-0).
- Be **Scott Drew's** 148th career win as Baylor head coach.

TELEVISION COVERAGE

- Saturday's Big 12 game between Baylor and Oklahoma will be televised live on the Big 12 Network (rebranded ESPN Plus) at 12:47 p.m. CST. **Dave Armstrong** (play-by-play) and **Bryndon Manzer** (analyst) will serve as the Big 12 Network talent.
- The game will be available in Central Texas on CWTX / The CW (Time Warner 165, Grande 15), KBTX, ESPN Full Court (pay-per-view) and WatchESPN.com (ESPN3).

BIG 12 NETWORK CLEARANCES

Central Texas Listings: CWTX / The CW (SD: Time Warner 165, Grande 15; HD: Time Warner 1008, Grande 815), KBTX

Other Texas Markets: Abilene / Sweetwater (KIDZ-LP); Amarillo (KCPN); Austin (KBVO); Beaumont / Port Arthur (KUIL-LD); Dallas / Fort Worth (KTXA); Houston (KUBE); Lubbock (KJTV); Odessa / Midland (KOSA-DT2); San Angelo (KIDY); San Antonio (KCWX); Sherman, Texas / Ada, Okla. (KXII-DT2); Tulsa (KTUL-DT); Tyler / Longview / Lufkin / Nacogdoches (KFXK / KFXL-LP)

Out-of-Texas Markets: Cedar Rapids / Waterloo / Dubuque, Iowa (KFXA); Columbia / Jefferson City, Mo. (KZOU); Denver (Altitude2, but not in KS or NE); Des Moines / Ames, Iowa (WOI-DT); Fort Smith / Fayetteville / Springdale / Rogers, Ark. (KFTA); Joplin, Mo. / Pittsburg, Kan. (KFJX); Kansas City (KSHB); La Crosse / Eau Claire, Wis. (KQEC); Little Rock / Pine Bluff, Ark. (KARZ); Los Angeles (KDOC); Meridian, Miss. (WTOK); Milwaukee (WMLW); Oklahoma City (KOCB); Omaha, Neb. (KXVO); Paducah, Ky. / Cape Girardeau, Mo. (WDKA); Parkersburg, W.Va. (WTAP-DT3); Rochester / Mason City / Austin, Iowa (NIMT); St. Louis (KPLR 11.2); Springfield, Mo. (KCZ); Topeka, Kan. (KSNT-DT); Wichita / Hutchinson, Kan. (KSAS)

Also available on *ESPN3* and *ESPN Full Court*

SERIES HISTORY

- Saturday marks the 69th series meeting and 34th in the Big 12 era. Oklahoma State leads the all-time series 50-18, and owns a 24-3 advantage in Stillwater. Baylor has won six of the last 10 meetings overall.
- Baylor hasn't won in Stillwater since Feb. 15, 2003, when it knocked off then-No. 14 Oklahoma State 74-72. Since then, Baylor has lost its last eight trips to Stillwater.
- Baylor is 9-24 against Oklahoma State in the Big 12 era, including two Big 12 Championship meetings (1997, 1999).

SERIES NOTES: Baylor hasn't swept the regular-season series with Oklahoma State since 1921-22 ... Baylor and Oklahoma State have split the regular-season series in each of the previous four seasons ... 14 of Baylor's 18 series wins have come in Waco ... Baylor hasn't won in Stillwater since Feb. 15, 2003 (lost 8 straight at Gallagher-Iba Arena) ... Saturday is just the fifth time Baylor will be ranked at the time of its series meeting with Oklahoma State ... In earlier meeting this season, Baylor scored a season-high 106 points, its first 100-point game since Nov. 22, 2009 (106 vs. Hardin-Simmons) ... Baylor's 106 points were its most ever in regulation of a Big 12 game and the most in a Big 12 game since scoring 116 in a 50T win at Texas A&M on Jan. 23, 2008 ... **Scott Drew** is 6-11 vs. Oklahoma State.

BAYLOR 20-WIN SEASONS

- In the program's first 101 seasons, Baylor posted 20+ wins just three times — 1945-46 (25-5, NCAA West Regional), 1947-48 (24-8, NCAA Runner-Up) and 1987-88 (23-11, NCAA First Round).
- With its 63-60 win Feb. 1 at Texas A&M, Baylor secured its fourth 20-win campaign in the last five seasons under head coach **Scott Drew** — 2007-08 (21-11), 2008-09 (24-15), 2009-10 (28-8) and 2011-12 (20-2).

SOONER STATE SUCCESS

- After posting a combined 6-48 record against Oklahoma and Oklahoma State in the first 13 seasons of the Big 12 Conference, Baylor has won 7 of its last 11 against the league's Sooner State schools.
- 10 of Baylor's 13 Big 12 wins against the Oklahoma schools have come under head coach **Scott Drew**; however, Baylor has only two road wins in the state of Oklahoma under Drew — 2010 and 2012 at Oklahoma

#CLUTCH IN CLOSE GAMES

- Baylor entered the season with a sub-.500 record in games decided by 5 points or fewer in the **Scott Drew** era. This season, Baylor is 6-1 in such games with four of its five wins coming away from home.
- The five of the six wins have been decided by 3 points or fewer — Dec. 17 at BYU (86-83), Dec. 23 vs. West Virginia (83-81, OT) in Las Vegas, Dec. 28 vs. No. 14 Mississippi State (54-52) in Dallas, Jan. 10 at No. 18 Kansas State (75-73) and Feb. 1 at Texas A&M (63-60). Baylor held off Texas 76-71 on Jan. 28.
- Baylor's lone loss decided by 5 points or fewer this season was a 1-point loss Jan. 21 to Missouri (89-88).



@BAYLORMBB TWITTER TALK

A social media look at Baylor men's basketball over the last week, 140 characters at a time.

#tweetnotes

- **@BaylorMBB** concluded #BrazosBattle with 5 straight wins, including back-to-back series sweeps.
- Baylor is 13-4 in its last 17 games against **@Big12Conference** Texas schools. #LoneStarDominance
- Baylor remains at No. 6 in latest **@AP_Top25** poll. Baylor has been ranked in the Top 10 for a program-best 11 consecutive weeks. #SicEm
- Baylor also moved up to one spot to No. 5 in latest **@CBSSports** Top 25 and one and No. 6 in coaches polls.
- Baylor's 20-2 start is the best in program history and its 7-2 conference start is its best since 1968-69 (Southwest Conference).
- #Baylor's four **@Big12Conference** weekly honors are the most by a **@BUDREW** team since 2010 (seven).
- **@BUDREW** needs 3 wins for Baylor victory No. 150, which move him to 3rd on school's career wins list.
- Success isn't limited to the court. 6 earned 3.0+ fall GPA, while team posted highest semester GPA in program history. #BooksandBrotherhood
- **Quincy Acy** is 4th in school history in career games played (122) and is 11 shy of record held by **LaceDarius Dunn**.
- **Quincy Acy's** rim-bending slam at Texas A&M came in at No. 6 on Feb. 2 **@SportsCenter** #SCtop10
- Since March 11, 2009, **@BaylorMBB** is 73-23 in its last 96 games — a .760 winning percentage.
- **Fred Ellis** graduated in Dec 2010, scheduled to receive master's degree in May & is first in family to graduate college. #TrueStudentAthlete
- In last 3 seasons, Baylor is 15-4 in games decided by 5 points or fewer; won 7 straight before loss to **@MissouHoops**. #TakingCareofBusiness
- #CallHimClutch: **Pierre Jackson** has been part of 5 go-ahead, game-tying or game-winning players this season.
- **Pierre Jackson** is one of 11 finalists — two from **@Big12Conference** — for the 2012 Bob Cousy Award. #SicEm #CallHimClutch
- Baylor has broken 90-point mark 4 times so far in 2011-12 and had combined 6 90-point games in previous 2 seasons.
- Since the start of the 2007-08 season, Baylor is 111-49 after winning just 135 games in first 11 seasons of **@Big12Conference** era.
- 51 percent of **Quincy Acy's** career FGs have been dunks (222 of 439). #AcyWithTheSmash
- Baylor has led at the half in 18 of its 22 games this season, trailing only at BYU, K-State, Kansas and Missouri.
- **Brady Heslip** has made 3FG in 21 of 22 games, and 57 of 69 total FG are from 3-range #DowntownCanadian
- Prior to **@BUDREW**, Baylor had 9 17-win seasons in program's first 97 seasons. Baylor has won 17+ in each of last 5 seasons. #Lucky17
- Baylor broke its #CenturyMarkDrought with 106-point outburst in 41-point win Jan. 14 over **@OKStateHoops**.
- Baylor's 41-point margin of victory over **@OKStateHoops** was its largest in a **@Big12Conference** game since beating Texas A&M by 42 in 2002.
- **A.J. Walton** needs 15 assists to crack Baylor's career Top 10. #HeCanDishItToo
- Baylor's frontline of **Ant Jones**, **Quincy Acy**, **#PJ3**, **Quincy Miller** and **Cory Jefferson** have combined wingspan of 35 ft, 11 in. #LotsOfLength

OFFICIAL TWITTER ACCOUNTS

@BaylorMBB	Baylor Men's Basketball
@BUDREW	Baylor Head Coach Scott Drew
@BaylorAthletics	Baylor Athletics



SCOTT DREW

HEAD COACH, NINTH SEASON

THE DREW FILE

PERSONAL

Birthdate: Oct. 23, 1970
Birthplace: Kansas City, Mo.
Family: Wife, Kelly; daughter Mackenzie, sons Peyton and Brody

EDUCATION

College: Butler, 1993; Valparaiso, 1994 (Master's)

COACHING EXPERIENCE

1993-01 Valparaiso (assistant coach)
2001-02 Valparaiso (associate head coach)
2002-03 Valparaiso (head coach)
2003- Baylor (head coach)

THE DREW WORKSHEET

YEAR	SCHOOL	RECORD	
		OVERALL	CONF.
2002-03	Valparaiso	20-11	12-2
2003-04	Baylor	8-21	3-13
2004-05	Baylor	9-19	1-15
2005-06†	Baylor	4-13	4-12
2006-07	Baylor	15-16	4-12
2007-08	Baylor	21-11	9-7
2008-09	Baylor	24-15	5-11
2009-10	Baylor	28-8	11-5
2010-11	Baylor	18-13	7-9
2011-12	Baylor	20-2	7-2
TOTALS	10 seasons	167-129	63-88
	Baylor totals	147-118	51-86

† Baylor played no non-conference schedule due to NCAA sanctions.

DREW VS. 2011-12 OPPONENTS

OPPONENT	CAREER	BAYLOR
Bethune-Cookman	2-0	2-0
BYU	1-0	1-0
Iowa State	4-5	4-5
Jackson State	5-0	5-0
Kansas	1-9	1-9
Kansas State	4-6	4-6
Mississippi State	1-0	1-0
Missouri	4-8	4-7
Northwestern	1-0	1-0
Oklahoma	4-14	4-14
Oklahoma State	6-11	6-11
Paul Quinn	2-0	2-0
Prairie View A&M	6-0	6-0
Saint Mary's	2-0	2-0
San Diego State	2-0	2-0
South Carolina State	1-0	1-0
Texas	5-15	5-15
Texas A&M	9-9	9-9
Texas Southern	4-0	4-0
Texas Tech	9-8	9-8
UT Arlington	3-0	3-0
West Virginia	1-0	1-0
TOTAL	167-129	147-118



Click / scan to view **Scott Drew's** complete bio at BaylorBears.com

JACKSON ONE OF 11 FINALISTS FOR 2012 BOB COUSY AWARD

- Junior PG **Pierre Jackson** is one of 11 finalists for the 2012 Bob Cousy Collegiate Point Guard of the Year award. The annual honor, named for Hall of Famer and former Boston Celtic Bob Cousy, recognizes the top point guard in college basketball. An original list of 60-plus candidates was trimmed by a Hall of Fame appointed, nationally-based committee to the final list of 11.
- Beginning Feb. 6 via www.cousyaward.com, fans will be able to vote for the top point guard. The player that receives the most fan votes will receive one vote toward the final committee vote. Fan voting will conclude March 6.
- The current listing of 11 finalists for the 2012 Bob Cousy Award will be narrowed to five players March 8. The final five players in contention for the award will be presented to Mr. Cousy and the Hall of Fame's selection committee. The Hall of Fame committee is made up of top college basketball personnel including media members, head coaches, Sports Information Directors and Hall of Famers. The winner of the 2012 Bob Cousy Award will be awarded at the Hall of Fame's Class Announcement on Mon., April 2, in New Orleans as part of NCAA Final Four weekend.

BIG PLAYS COME IN 5'S

- Bob Cousy Award finalist **Pierre Jackson** has a knack for making big play after big play. In his first season at Baylor, Jackson has been a part of five go-ahead, game-tying or game-winning plays:
 - He blocked BYU's 3-point attempt at the buzzer to clinch Baylor's 86-83 road win Dec. 17;
 - He hit a game-tying 3-pointer to force overtime Dec. 23 vs. West Virginia;
 - He hit the GW layup with 28 seconds remaining and grabbed a rebound as time expired Dec. 29 vs. Mississippi State;
 - He hit the go-ahead 3-pointer to put Baylor up for good Jan. 28 vs. Texas; and
 - He hit the GW 3-pointer with 17 seconds remaining and sealed the game with two free throws Feb. 1 at Texas A&M.

ROAD – AND NEUTRAL – WARRIORS

- Baylor is 9-1 away from home this season. In the last five seasons under ninth-year head coach **Scott Drew**, Baylor has won 24 true road and 20 neutral-site games — a combined 44-34 record away from home.
- In Baylor's first 11 seasons in the Big 12, the Bears won a combined 28 games away from Waco (15 neutral and 13 true road).

BIG 12 ROAD IMPROVEMENT

- In the first 11 seasons of the Big 12 Conference era, Baylor won only 8 conference road games. Since then, Baylor has won 14 conference road games in the last five seasons.
- Baylor went 4-4 in Big 12 road games in 2007-08, 1-7 in 2008-09 (lone road win at Kansas State), 4-4 in 2009-10, 2-6 in 2010-11 and 3-1 this season.

#QSQUARED

- Senior PF **Quincy Acy** and freshman SF **Quincy Miller** — two-thirds of Baylor's starting frontcourt — are two of the Bears' leading scorers in Big 12 play. Miller ranks second on the team with 14.9 points in eight Big 12 contests, while Acy is fourth with 12.6 points.
- Together, #QSquared is averaging 27.5 points and 11.4 rebounds, while shooting 53.5 percent from the floor (85-159), 50.0 percent from 3-point range (13-26) and 82.1 percent from the FT line (64-78).

#DOWNTOWNCANADIAN

- Sophomore G **Brady Heslip** has made at least one 3FG in 21 of 22 games this season and owned a streak of 13 consecutive games with at least 1 trey until being held scoreless Jan. 2 vs. Texas A&M. Heslip is knocking down an impressive 45 percent from beyond the arc (57-for-128). In fact, 57 of the Ontario native's 69 FGs this season have been from 3-point range.
- Heslip has quickly established himself as one of the nation's best 3-point shooters. He ranks 2nd in the Big 12 with 2.59 3FGs made per game and ranks 5th in 3FG percentage.

A PROGRESSING BLOCK PARTY

- Through 22 games, senior F **Quincy Acy** has blocked a team-best 51 shots, surpassing his freshman, sophomore and junior season totals. As a freshman, Acy had 34 blocks in 34 games (averaged 1.0 block per game); as a sophomore, he had 28 blocks in 36 games (averaged 0.78 blocks per game). He had 45 blocks as a junior in 2010-11.
- In his last 53 games, Acy has swatted 96 shots, an average of 1.81 blocks per game. By comparison, Acy blocked 62 shots in his 70 games in a Baylor uniform (0.89 blocks per game).

#ACYWITHTHESMASH

- Senior F **Quincy Acy** ranks second in school history — behind former teammate **Josh Lomers** — with a career 60.8 field goal percentage. Acy, regarded as one of the nation's most ferocious dunkers, has recorded 222 career field goals via the dunk.
- In 123 career games, approximately 51 percent (222 of 439) of Acy's career FGM have been dunks.

CONSECUTIVE GAMES WITH A MADE 3-POINT FIELD GOAL – 641

- Baylor has made at least one 3-point field goal in 641 consecutive games — the second-longest active streak in the Big 12 behind only Texas. Baylor has connected from 3-point range in every game since Feb. 21, 1990, in a win over Texas Tech.

KEEPING IT UNDER 70

- Baylor has held 16 opponents to fewer than 70 points. Since the start of the 2007-08 season, Baylor is 70-9 when holding opponents below the 70-point mark. Baylor is 103-25 in the **Scott Drew** era when holding opponents to fewer than 70 points.
- In the last five seasons, Baylor is 24-5 in Big 12 games when holding opponents to fewer than 70 points.
- 10 of Baylor's opponents have failed to reach the 60-point mark. Baylor has won 51 straight games when holding opponents to fewer than 60 points (54-3 in the **Scott Drew** era).
- Baylor's last loss when holding an opponent to fewer than 60 points came March 6, 2004 — a 46-41 loss at Oklahoma.

CLOSING IN ON BAYLOR'S WINNINGEST SENIOR CLASS...AGAIN

- Each of Baylor's three previous senior classes have set the school record for victories. The original school record for wins by a senior class was 64 set by **Curtis Jerrells, Kevin Rogers, Henry Dugat and Mamadou Diene**. In 2010, **Tweety Carter** and **Josh Lomers** obliterated the record by 24 victories, winning 88 games in four seasons. In 2011, **LaceDarius Dunn** ended his career with 91 career wins.
- This year's senior class — **Quincy Acy, Fred Ellis and Anthony Jones** — have 90 career victories and need two more to become the winningest senior class in program history.

ALL EYES ON ACY

- Known for his ferocious dunks, senior F **Quincy Acy** became the 25th 1,000-point scorer in Baylor history Dec. 14 against Bethune-Cookman ... on a free throw at the 3:58 mark in the second half. Acy is the seventh 1,000-point scorer in the **Scott Drew** era, joining **Aaron Bruce, Curtis Jerrells, Henry Dugat, Kevin Rogers, LaceDarius Dunn and Tweety Carter**.
- Acy is currently 17th in program history with 1,180 career points. The Mesquite, Texas, native trails former NBA star and Baylor manager **David Wesley** (1,224) by 44 points for 15th and **Darrell Hardy** (1,360) by 180 points for 10th.

BAYLOR CAREER SCORING LIST

PLAYER, SEASONS	PTS
1. LaceDarius Dunn, 2007-11	2,285
2. Terry Teagle, 1978-82	2,189
3. Micheal Williams, 1984-88	1,854
4. Curtis Jerrells, 2005-09	1,820
5. Brian Skinner, 1994-98	1,702
6. Darryl Middleton, 1984-88	1,677
7. Aundre Branch, 1991-95	1,666
8. Tweety Carter, 2006-10	1,437
9. Kevin Rogers, 2005-2009	1,371
10. Darrell Hardy, 1964-67	1,360
11. Aaron Bruce, 2004-08	1,330
12. Doug Brandt, 1993-97	1,263
13. Vinnie Johnson, 1977-79	1,231
14. Henry Dugat, 2005-09	1,229
15. David Wesley, 1989-92	1,224
16. Willie Sublett, 1990-94	1,223
17. QUINCY ACY, 2008-PRES.	1,180

BAYLOR CAREER REBOUNDS LIST

PLAYER, SEASONS	REB
1. Brian Skinner, 1994-98	915
2. Jerry Mallett, 1955-57	877
3. Kevin Rogers, 2005-09	865
4. Darrell Hardy, 1965-67	836
5. Terry Teagle, 1979-82	805
6. Darryl Middleton, 1985-88	730
7. Doug Brandt, 1993-97	728
8. Tommy Bowman, 1968-70	695
QUINCY ACY, 2008-PRES.	695
10. Arthur Edwards, 1975-78	681

BAYLOR CAREER BLOCKS LIST

PLAYER, SEASONS	BLK
1. Brian Skinner, 1994-98	346
2. QUINCY ACY, 2008-PRES.	158
3. Mamadou Diene, 2005-09	145
4. Ekpe Udoh, 2009-10	133

ACY CLOSING IN ON SELECT COMPANY

- Already second in school history in career FG percentage (60.8) and blocked shots (158), senior F **Quincy Acy** continues to climb the career scoring and rebounding charts and, in the process, is closing on select company.
- Acy, who ranks 17th in school history with 1,180 career points, needs 180 more to tie **Darrell Hardy** for 10th all-time (1,360). If Acy cracks the Top 10 in scoring, he will become only the second player in school history to rank in the Top 10 in career scoring, rebounding, blocked shots and FG percentage. The other? **Brian Skinner**.

MORE #ACYWATCH

- Senior F **Quincy Acy** is also chasing **LaceDarius Dunn** for the career games played record. Acy has played 123 career games — the fourth-most in program history behind only **Josh Lomers** (129), **Tweety Carter** (131) and **Dunn** (134). Acy needs 12 more games to become Baylor's career leader for games played.
- Acy has played 57 career Big 12 games, which rank 10th in program history. He needs to play in 8 more Big 12 games this season to become Baylor's career leader for Big 12 games played. The current record of 64 career Big 12 games played is shared by five players — **Jamie Kendrick** (1997-2000), **Matt Sayman** (2000-04), **Curtis Jerrells** (2005-09), **Carter** (2006-10) and **Dunn** (2007-11).

JONES III NAMED TO WOODEN AWARD MIDSEASON LIST

- Sophomore F **Perry Jones III** was named to the 2011-12 John R. Wooden Award Midseason List. Selected by the Wooden Award National Advisory Board, the midseason list is made up of 25 student-athletes, who — based on their performances in November, December and the beginning of January — are the frontrunners for college basketball's most prestigious honor.
- Jones III is joined on the list by two other Big 12 representatives — Missouri's **Marcus Denmon** and Kansas' **Thomas Robinson**.
- All collegiate basketball players, including transfers, freshmen and medical redshirts, are eligible for the midseason list. In addition, all players will be evaluated and considered for the official voting ballot released in March.
- The 36th annual Wooden Award Gala, will take place on Fri., April 6, 2012, and will honor winners. All Americans and the Legends of Coaching winner **Geno Auriemma** of Connecticut. The John R. Wooden Award winner will be announced the weekend of the Final Four in New Orleans, La.

DREW PARTICIPATING IN INFINITI COACHES' CHARITY CHALLENGE

- Scott Drew** is one of 48 college basketball head coaches participating in the Infniti Coaches' Charity Challenge. Drew, in his ninth season at Baylor, has chosen The Jimmy V Foundation® for Cancer Research as his designated charity.
- As part of its ongoing corporate partnership with the National Association of Basketball Coaches, the NCAA and ESPN, Infniti expanded the program from 14 coaches last season to 48 of the nation's top NCAA Division I men's basketball coaches this year with Infniti's total contribution surpassing \$300,000.
- Fans participation will determine the winner over an eight-week period beginning January 18 by registering and voting on a custom microsite, www.ESPN.com/Infniti. For the first six weeks, four brackets of 12 coaches will be paired against each other, with the winners from each group moving onto the next round in week seven and the final round in week eight. Fans can vote for up to four coaches per day. The winning coach will be announced March 9, 2012.
- The winning coach's designated charity will receive a \$100,000 donation from Infniti; all 48 coaches' charities are guaranteed at least \$5,000 from Infniti.

MISCELLANEOUS STATISTICS

Current Streak	Won 3
Current Home Streak	Won 1
Current Road/Neutral Streak	Won 2
Last Win	Feb. 1, 2012, at Texas A&M (63-60)
Last Road Win	Feb. 1, 2012, at Texas A&M (63-60)
Last Loss	Jan. 21, 2012, vs. 5/5 Missouri (88-89)
Last Road Loss	Jan. 16, 2012, at 7/7 Kansas (74-92)

BAYLOR RECORD BY STARTING LINEUP

Walton (g), Heslip (g), Miller (f), Acy (f), Jones III (f)	11-1
Walton (g), Heslip (g), Jones (f), Miller (f), Acy (f)	4-0
Walton (g), Heslip (g), Jones (f), Jefferson (f), Acy (f)	1-0
Walton (g), Heslip (g), Jones (f), Acy (f), Jones III (f)	1-0
Jackson (g), Heslip (g), Jones (f), Acy (f), Jones III (f)	3-1

	2011-12		DREW
	All	B12	Era
Leading or tied at halftime	18-0	6-0	120-24
Trailing at halftime	2-2	1-2	27-94
Shoot 50 percent or higher	9-1	3-1	78-8
Shoot lower than 50 percent	11-1	4-1	69-110
Shoot higher pct than opponent	187-1	7-1	134-15
Shoot lower percentage than opp	2-1	0-1	13-101
Opp. shoot lower than 50 percent	19-0	6-0	140-57
Opp. shoot 50 percent or higher	1-2	1-2	7-61
Score fewer than 60 points	1-0	—	5-29
Score 60-plus points	19-2	7-2	142-89
Score 70-plus points	17-2	5-2	117-38
Score 80-plus points	6-1	1-1	63-7
Score 90-plus points	4-0	1-0	34-2
Score 100-plus points	1-0	1-0	10-0
Opp. score fewer than 50 points	2-0	—	12-1
Opp. score fewer than 60 points	10-0	1-0	54-3
Opp. score fewer than 70 points	16-0	5-0	103-25
Opp. score fewer than 80 points	18-0	7-0	136-16
Opp. score 80-plus points	2-2	0-2	11-42
Opp. score 90-plus points	0-1	0-1	2-13
More rebounds than opponent	16-0	6-0	105-28
Equal/fewer rebounds than opp.	4-2	1-2	42-90
40+ rebounds	8-0	3-0	53-11
Fewer than 40 rebounds	12-2	4-2	94-107
Fewer turnovers than opp.	9-1	2-1	76-40
Equal/more turnovers than opp.	11-1	5-1	71-78
Games decided by 5 or fewer pts	6-1	3-1	31-27
OT games	1-0	—	10-2
TV games	15-2	7-2	92-96
Games vs. ranked opponents	2-2	1-2	11-48
Games following a loss	1-1	1-1	47-62
Games following a win	18-1	5-1	89-54
More points in paint than opp.	15-1	6-1	104-36
Equal/fewer pts in paint than opp.	5-1	1-1	43-82
More points off TO than opp.	14-1	4-1	90-40
Equal/fewer pts off TO than opp.	6-1	3-1	57-78
More bench points than opp.	16-1	5-1	84-50
Equal/fewer bench points than opp.	4-1	2-1	63-68
More 2nd-chance points than opp.	10-0	3-0	80-43
Equal/fewer 2nd-ch. pts than opp.	10-2	4-2	67-75
Playing in November	6-0	—	36-6
Playing in December	7-0	—	38-12
Playing in January	6-2	6-2	33-39
Playing in February	1-0	1-0	22-41
Playing in March	—	—	18-19
Playing in April	—	—	0-1

SPECIALTY STATISTICS

[POT - Points off turnovers; PP - Points in the paint; 2nd - Second chance points; FAST - Fast break points; BP - Points off the bench]

Opponent	[Baylor-Opponent]				
	PP	POT	2nd	FAST	BP
Texas Southern	34-24	27-10	10-9	2-4	25-23
Jackson State	28-16	27-11	24-13	6-0	36-15
San Diego State	26-16	17-7	11-5	2-0	14-15
S.C. State	36-14	8-28	9-14	2-0	26-8
UT Arlington	30-26	23-24	21-10	2-4	28-23
Prairie View A&M	46-14	23-5	4-10	0-0	39-19
at Northwestern	46-12	23-11	3-9	14-0	25-8
Bethune-Cookman	42-16	27-10	11-8	8-0	32-10
at BYU	24-41	26-20	12-24	2-11	19-27
Paul Quinn	58-26	16-15	18-6	12-8	47-9
Saint Mary's	28-32	16-19	9-14	2-6	16-14
West Virginia	30-40	18-11	12-25	8-2	31-12
Mississippi State	24-30	7-18	6-10	2-10	16-8
Texas A&M	26-18	12-18	8-9	2-0	13-2
at Texas Tech	26-14	15-13	13-4	4-2	25-18
at Kansas State	36-32	30-26	8-12	18-7	15-13
Oklahoma State	36-24	20-19	21-7	2-4	42-23
at Kansas	34-48	14-15	8-17	5-6	16-5
Missouri	52-46	22-20	11-18	2-0	3-10
at Oklahoma	30-24	13-12	13-13	7-4	14-4
Texas	22-22	4-20	18-11	0-2	8-11
at Texas A&M	24-24	8-12	11-15	6-7	11-16
BAYLOR TOTAL	738	416	266	108	501
Baylor Average	33.5	18.9	12.1	4.9	22.8
OPP TOTAL	559	326	258	77	293
Opp Average	25.4	14.8	11.7	3.5	13.3

CLUTCH FREE THROWS

[Final 3 Minutes - Regulation & OT]

Player	FT-FTA	Pct.
Brady Heslip	7-8	.875
Pierre Jackson	13-15	.867
Quincy Acy	11-14	.786
Perry Jones III	5-6	.833
Quincy Miller	5-7	.714
A.J. Walton	2-3	.667
Deuce Bello	2-4	.500
Cory Jefferson	1-2	.500
Anthony Jones	1-3	.333
TEAM TOTAL	47-62	.758

21-FOR-22 GRADUATES IN DREW ERA

- 21 current of former players have graduated from Baylor in the **Scott Drew Era**: **Matt Sayman** (2004); **Robbie McKenzie** (2004); **Ryan Pryor** (2005); **Tommy Swanson** (2006); **Kevis Shipman** (2006); **Tim Bush** (2007); **Patrick Fields** (2007); **Richard Hurd** (2008); **Mark Shepherd** (2008); **Mamadou Diene** (2008); **Kevin Rogers** (2009); **Curtis Jerrells** (2009); **Henry Dugat** (2009); **David Wesley** (2009); **Delbert Simpson** (2009); **Tweety Carter** (2010); **Josh Lomers** (2010); **Aaron Bruce** (2010), **Fred Ellis** (2010), **Terry Black** (2011) and **Ekpe Udoh** (2011).

ANOTHER FORMIDABLE FRONT LINE

- For the third consecutive season, Baylor owns one of the nation's tallest, longest and athletic starting front lines.
- Baylor's frontline fivesome of senior F **Anthony Jones** (6-foot-10, wingspan: 7 feet, 2 inches), senior F **Quincy Acy** (6-foot-7, wingspan: 7 feet, 3 inches), sophomore F **Perry Jones III** (6-foot-11, wingspan: 7 feet, 2 inches), redshirt sophomore F **Cory Jefferson** (6-foot-9, wingspan: 7 feet) and freshman F **Quincy Miller** (6-foot-9, wingspan: 7 feet, 4 inches) has a combined wingspan of 35 feet, 11 inches (width of NCAA playing court is 50 feet).
- In 2009-10, Baylor's front line of C **Josh Lomers**, F **Ekpe Udoh** and F **Anthony Jones** combined to give the Bears the second-tallest team in the nation behind Kentucky.

BAYLOR HAULS IN TOP-10 SIGNING CLASS OF 2012

- Three Texas prep standouts — Arlington's **Isaiah Austin**, Houston's **Lynden "L.J." Rose** and Fort Worth's **Chad Rykhoek** — signed National Letters of Intent for 2012-13. Baylor's 2012 signing class is ranked No. 10 nationally by *Scout.com*, No. 11 by *CBSSports.com* and No. 12 by both ESPN and *Rivals.com*.
- Headlining the top-10 recruiting class is Austin, a consensus top-5 and five-star recruit from Grace Preparatory Academy. He is ranked the No. 3 overall prospect in the Class of 2012 by ESPN and *247Sports.com*, No. 4 by *MaxPreps.com* and No. 5 by both *Rivals.com* and *Scout.com*.
- Rose, named to the 2010 USA Youth Olympic Games team, participated in the USA Men's Developmental National Team's training in 2010 and was also named to the 2009 USA Basketball Men's U16 National Team. The third and final piece to Baylor's top-10 recruiting class of 2012 is Rykhoek (pronounced RY-cook), who is a 6-foot-11, 220-pound power forward out of Fort Worth (Texas) Christian.

PROFESSIONAL BASKETBALL

- In the **Scott Drew** era, 16 former players have gone on to play professional basketball.
- Nine players are either currently playing professionally or on a professional roster — **Ekpe Udoh** (NBA), **Curtis Jerrells** (Turkey), **Tweety Carter** (Israel), **Henry Dugat** (Mexico) **LaceDarius Dunn** (Israel), **Terrance Thomas** (D-League), **Patrick Fields** (Finland), **R.T. Guinn** (Ukraine) and **Aaron Bruce** (Australia).
- Other former players to have gone on to play professionally include **Jari Vanttaja** (Finland), **Matt Sayman** (Iceland), **Josh Lomers** (D-League), **Tim Bush** (D-League), **Kevin Rogers** (Greece), **Harvey Thomas** (D-League) and **Tommy Swanson** (England, France, Japan).

A TRADITION OF EXCELLENCE ON THE FIELD

- In the Big 12's 15-year history, Baylor has won a combined 42 regular-season and tournament conference championships in eight sports; 13 more than it won in 81 years of Southwest Conference membership. Baylor's 42 all-time Big 12 titles ranks fifth overall (and No. 4 among the current 10-school league line-up behind Texas, Texas A&M and Oklahoma).
- Over the last eight academic years (2003-04 thru 2010-11), Baylor has won a combined 33 Big 12 regular-season and tournament championships in six sports, which ranks third behind Texas (58) and Texas A&M (39) in that period, and ahead of Nebraska (29) and Oklahoma (28).
- In that same span, Baylor has won two NCAA team championships (2004 men's tennis and 2005 women's basketball) and 13 NCAA individual titles, while registering seven of its 10 highest finishes in the Learfield Directors' Cup all-sports standings.
- Seventeen of Baylor's 19 sports' teams have made at least one postseason appearance over the last eight years with men's basketball reaching the 2009-10 Elite 8; women's basketball advancing to a pair of Final Fours (2004-05 national champions and 2009-10), baseball making the 2005 College World Series, softball advancing to the 2007 and 2011 (fourth-place) Women's College World Series, men's tennis advancing to nine consecutive Elite 8's (including the 2004 NCAA team championship, which started a run of four straight Final Four appearances) and women's tennis's five Elite 8's which includes a pair of Final Four appearances in 2008 and 2011.
- Prominent Baylor athletes include 2011 Heisman Trophy winner **Robert Griffin III**; Olympic gold medalists **Michael Johnson** and **Jeremy Wariner**; **Mike Singletary**, NFL Hall of Famer; **Ted Lyons**, MLB Hall of Famer; 2007 NBA Finals participants **David Wesley** and **Melvin Hunt**; 2007 NFL Super Bowl XLI participants **Fred Miller** and **Justin Snow**; Current MLB players include **David Murphy** and **Kelly Shoppach**.

A TRADITION OF EXCELLENCE OFF THE FIELD

- The combined GPA of all 400+ Baylor student-athletes during the fall 2011 semester was a 3.16, a school-record for any term and the seventh consecutive semester their cumulative GPA topped the 3.0 mark. All-told, Baylor had a program-record 130 student-athletes on the fall 2011 Dean's List, which is awarded to Baylor students with a 3.7 GPA, enrolled in at least 12 hours and make no grade lower than a C. In addition, 24 student-athletes earned their Baylor degrees during December 2011 ceremonies, 23 of whom earned bachelor's degrees.
- Fifteen of Baylor's 19 varsity teams registered a fall 2011 term cumulative grade-point average of at least a 3.00, led by women's soccer's all-time semester best 3.56 mark.

BAYLOR BASKETBALL ON THE RADIO

- Baylor basketball is aired live via the Baylor-IMG College Radio Network on ESPN Central Texas and flagship station 1660AM ESPN Radio (KRZI) in Waco and worldwide on Sirius XM Radio. All games are broadcast by the "Voice of the Bears" **John Morris** and former Baylor basketball standout **Pat Nunley**. Morris is in his 25th year doing Baylor broadcasts, while Nunley is in his 30th season as color analyst.



ACY NOTEBOOK

ALL-BIG 12 CANDIDATE

LAST TIME OUT – FEB. 1 at TEXAS A&M

- Had 11 points, 4 rebounds and 3 assists in 33 minutes

TRENDS

- Career vs. Oklahoma State (7 games / 3 starts): 12.3 points, 7.1 rebounds, 1.4 blocks in 26.4 minutes (66.7 FG%, 78.1 FT%)
- Career Baylor rankings: 2nd in FG% (60.8), 2nd in blocked shots (158), 4th in games played (123), 8th in rebounding (695), 10th in Big 12 games played (57), 17th in scoring (1,180)
- National rankings (thru games Jan. 29): 29th in blocked shots
- Big 12 rankings (overall): 2nd in blocked shots (2.32), 5th in rebounding (6.8), 13th in FT% (77.1), 17th in scoring (12.5)
- Big 12 rankings (Big 12 only): 2nd in blocked shots (2.11), 7th in FT% (86.1), 12th in rebounding (5.8), 18th in scoring (12.6)
- 51 percent of career FGs are dunks (222 of 439)
- 444 of his 1,180 career points have come on dunks
- 64 career double-figure scoring games, 14 career double-figure rebounding games, 41 career games with 2+ blocks

4 – QUINCY ACY

F • 6-7 • 235 • SR. • 3L
MESQUITE, TEXAS (HORN HS)



Click / scan to view Quincy Acy's complete bio at BaylorBears.com

SEASON HIGHS

Points: 24 – vs. Paul Quinn, 12/19/11
FG: 10 – vs. Paul Quinn, 12/19/11
FGA: 13 – vs. Missouri, 1/21/12
FT: 8 – vs. Oklahoma State, 1/14/12
FTA: 8, multiple times
Rebounds: 11, twice – last vs. Prairie View A&M, 11/29/11
Assists: 3 – at Texas A&M, 2/1/12
Steals: 2, multiple times
Blocks: 6, twice – last at Northwestern, 12/4/11
Turnovers: 3 – vs. UT Arlington, 11/23/11
Minutes Played: 41 – vs. West Virginia, 12/23/11

CAREER HIGHS

Points: 25 – vs. La Salle, 11/16/10
FG: 12 – vs. Texas, 3/6/10
FGA: 16, twice – last vs. Florida State, 12/25/10
FT: 8, twice – last vs. Oklahoma State
FTA: 13 – vs. Nebraska, 2/9/11
Rebounds: 15 – vs. Oklahoma, 3/9/11
Assists: 3, twice – last at Texas A&M, 2/1/12
Steals: 5 – Paul Quinn, 11/15/08
Blocks: 6, twice – last at Northwestern, 12/4/11
Turnovers: 5 – vs. Morgan State, 1/4/11
Minutes Played: 41 – vs. West Virginia, 12/23/11

MISCELLANEOUS

	GAMES	BU W-L
Double-Figure Points:	64	50-14
20+ Point Games:	6	5-1
Double-Figure Rebounds:	14	11-3
2+ Blocks:	41	31-10
Double-Doubles:	13	11-2

2011-2012 GAME-BY-GAME

OPPONENT	DATE	GS	MIN	FG	3FG	FT	OR-DR	TR	PF	A	T	B	S	PTS
TEXAS SOUTHERN	11/11	*	26	3-4	0-0	5-7	3-4	7	3	1	1	2	1	11
JACKSON STATE	11/13	*	25	4-5	0-0	6-8	1-1	2	2	0	0	2	2	14
SAN DIEGO STATE	11/15	*	34	3-5	0-0	7-8	3-6	9	1	2	1	2	1	13
S.C. STATE	11/22	*	32	3-7	0-0	3-4	2-6	8	3	0	2	3	1	9
UTA	11/23	*	29	4-7	0-0	2-4	3-8	11	2	1	3	6	0	10
PRAIRIE VIEW A&M	11/29	*	28	3-6	0-0	7-8	1-10	11	3	1	2	1	2	13
at Northwestern	12/4	*	29	8-10	0-0	0-2	1-5	6	2	0	1	6	0	16
BETHUNE-COOKMAN	12/14	*	22	4-8	0-0	2-6	3-4	7	4	0	3	4	0	10
at BYU	12/17	*	27	3-7	0-0	2-4	0-4	4	2	0	1	0	1	8
PAUL QUINN	12/19	*	22	10-12	0-0	4-4	3-3	6	1	1	0	3	1	24
vs. Saint Mary's	12/22	*	26	2-4	1-1	7-8	3-7	10	4	1	2	0	2	12
vs. West Virginia	12/23	*	41	5-10	0-1	5-5	4-4	8	3	0	2	0	1	15
vs. Mississippi State	12/28	*	33	2-7	0-0	3-5	4-4	8	0	0	2	3	1	7
TEXAS A&M	1/2	*	32	3-7	1-1	6-6	2-4	6	3	1	2	3	0	13
at Texas Tech	1/7	*	36	2-6	0-0	2-4	3-2	5	5	1	0	2	1	6
at Kansas State	1/10	*	24	6-6	0-0	1-2	2-1	3	4	0	3	1	2	13
OKLAHOMA STATE	1/14	*	22	3-9	1-1	8-8	2-4	6	1	2	5	2	0	15
at Kansas	1/16	*	27	7-10	0-1	0-0	2-3	5	4	1	1	3	2	14
MISSOURI	1/21	*	31	8-13	0-0	2-2	3-6	9	4	1	2	2	2	18
at Oklahoma	1/24	*	32	4-6	0-0	5-6	2-2	4	4	2	0	3	1	13
TEXAS	1/28	*	31	3-6	0-0	4-4	3-7	10	4	1	2	2	0	10
at TEXAS A&M	2/1	*	33	4-6	0-0	3-4	1-3	4	2	3	2	1	1	11

CAREER STATISTICS

YEAR	GP-GS	MIN-AVG	FG-A	PCT	3FG-A	PCT	FT-A	PCT	OFF-DEF-TOT	AVG	PF-D	A	TO	B	S	TP	AVG
2008-09	34-10	558-16.4	72-110	.655	0-0	.000	41-72	.569	49-75-124	3.6	75-2	9	33	34	21	185	5.4
2009-10	36-0	840-23.3	136-195	.697	0-0	.000	63-88	.716	65-120-185	5.1	84-1	11	45	28	17	335	9.3
2010-11	31-18	960-31.0	137-256	.535	0-2	.000	111-162	.685	87-150-237	7.6	79-3	28	65	45	29	385	12.4
2011-12	22-22	642-29.2	94-161	.584	3-5	.600	84-109	.771	51-98-149	6.8	61-1	19	37	51	22	275	12.5
CAREER	123-50	3000-24.4	439-722	.608	3-7	.429	299-431	.694	252-443-695	5.7	299-7	67	180	158	89	1180	9.6

CAREER STATISTICS

YEAR	GP-GS	MIN-AVG	FG-A	PCT	3FG-A	PCT	FT-A	PCT	OFF-DEF-TOT	AVG	PF-D	A	TO	B	S	TP	AVG
2008-09	16-10	304-19.0	34-57	.596	0-0	.000	26-38	.684	27-30-57	3.6	35-0	4	15	13	5	94	5.9
2009-10	16-0	398-24.9	66-90	.733	0-0	.000	36-46	.783	32-58-90	5.6	40-0	5	23	12	8	168	10.5
2010-11	16-4	484-30.3	62-118	.525	0-1	.000	43-68	.632	38-71-109	6.8	48-3	16	35	26	16	167	10.4
2011-12	9-9	268-29.8	40-69	.580	2-3	.667	31-36	.861	20-32-52	5.8	31-1	12	17	19	9	113	12.6
CAREER	57-23	1454-25.5	202-334	.605	2-4	.500	136-188	.723	117-191-308	5.4	154-4	37	90	70	38	542	9.5



14 – DEUCE BELLO

G • 6-4 • 185 • FR. • HS
GREENSBORO, N.C. (WESTCHESTER COUNTRY DAY)



Click / scan to view **Deuce Bello's** complete bio at BaylorBears.com

SEASON / CAREER HIGHS

Points: 10 – vs. Prairie View A&M, 11/29/11
FG: 4, twice – last vs. Bethune-Cookman, 12/14/11
FGA: 8 – vs. South Carolina State, 11/22/11
3FG: 1 – vs. Jackson State, 11/13/11
3FGA: 2 – vs. South Carolina State, 11/22/11
FT: 3 – vs. Jackson State, 11/13/11
FTA: 5 – vs. Texas Southern, 11/11/11
Rebounds: 7 – vs. Jackson State, 11/13/11
Assists: 2 – vs. Oklahoma State, 1/14/12
Steals: 2, twice – last vs. Prairie View A&M, 11/29/11
Blocks: 2 – vs. Texas Southern, 11/11/11
Turnovers: 4 – vs. UT Arlington, 11/23/11
Minutes Played: 19, twice – last vs. Paul Quinn, 12/19/11

MISCELLANEOUS

	GAMES	BU W-L
Double-Figure Points:	1	1-0
Double-Figure Rebounds:	–	–
5+ Assists:	–	–
Double-Doubles:	–	–

BELLO NOTEBOOK

BIG 12 COMMISSIONER'S HONOR ROLL FALL 2011

LAST TIME OUT – FEB. 1 at TEXAS A&M

- DNP, coach's decision (DNP in 7 of last 11 games)

TRENDS

- Career vs. Oklahoma State (1 game): 4 points, 2 assists and 1 rebound in 14 minutes
- Windmill dunk vs. Bethune-Cookman was No. 2 on *SportsCenter's* Top 10 plays (Dec. 14)
- 13 of 22 FGM have been dunks (59 percent)

OTHER NOTES

- One of his dunks vs. Prairie View A&M was No. 2 on *SportsCenter's* Top 10 on Nov. 29
- Scored career-high 10 points – including 4 dunks – in Nov. 29 win vs. Prairie View A&M
- Comprised Baylor's consensus top-20 recruiting class of 2011 with Westchester Country Day School teammate **Quincy Miller**
- Overall national recruiting rankings – No. 52 (*Scout.com*), No. 53 (*Rivals.com*), No. 53 (ESPN), No. 86 (*MaxPreps.com*)
- Rated one of the world's best dunkers – at any level (high school, college, pro)

2011-2012 GAME-BY-GAME

OPPONENT	DATE	GS	MIN	FG	3FG	FT	OR-DR	TR	PF	A	T	B	S	PTS
TEXAS SOUTHERN	11/11		15	3-7	0-1	1-5	0-1	1	2	1	3	2	2	7
JACKSON STATE	11/13		19	2-3	1-1	3-4	3-4	7	3	0	3	1	0	8
SAN DIEGO STATE	11/15		8	2-3	1-1	0-0	0-1	1	2	1	0	0	0	5
S.C. STATE	11/22		15	2-8	0-2	2-4	1-3	4	0	1	0	0	1	6
UTA	11/23		9	0-3	0-2	0-0	0-2	2	2	0	4	0	1	0
PRAIRIE VIEW A&M	11/29		17	4-5	0-1	2-3	1-3	4	2	1	1	0	2	10
at Northwestern	12/4		9	0-0	0-0	1-2	1-1	2	1	0	0	0	1	1
BETHUNE-COOKMAN	12/14		17	4-5	0-0	1-2	0-3	3	0	0	1	0	0	9
at BYU	12/17		6	0-1	0-1	0-0	0-0	0	1	0	1	1	0	0
PAUL QUINN	12/19		19	3-7	0-1	2-4	3-3	6	3	1	1	1	1	8
vs. Saint Mary's	12/22		3	0-1	0-0	0-0	0-0	0	0	0	1	0	0	3
vs. West Virginia	12/23													–DNP – (COACH'S DECISION)
vs. Mississippi State	12/28													–DNP – (COACH'S DECISION)
TEXAS A&M	1/2													–DNP – (COACH'S DECISION)
at Texas Tech	1/7													–DNP – (COACH'S DECISION)
at Kansas State	1/10		5	1-1	0-0	1-2	1-1	2	2	0	0	0	0	3
OKLAHOMA STATE	1/14		14	1-1	0-0	2-2	0-1	1	4	2	0	0	0	4
at Kansas	1/16		8	0-1	0-0	0-0	1-2	3	1	0	1	0	0	0
MISSOURI	1/21		2	0-0	0-0	0-0	0-0	0	1	0	0	0	1	0
at Oklahoma	1/24													–DNP – (COACH'S DECISION)
TEXAS	1/28													–DNP – (COACH'S DECISION)
at Texas A&M	2/1													–DNP – (COACH'S DECISION)

CAREER STATISTICS

YEAR	GP-GS	MIN-AVG	FG-A	PCT	3FG-A	PCT	FT-A	PCT	OFF-DEF-TOT	AVG	PF-D	A	TO	B	S	TP	AVG
2011-12	15-0	166-11.1	22-46	.478	2-10	.200	15-28	.536	11-25-36	2.4	24-0	7	16	5	9	61	4.1
CAREER	15-0	166-11.1	22-46	.478	2-10	.200	15-28	.536	11-25-36	2.4	24-0	7	16	5	9	61	4.1

ALL GAMES

CAREER STATISTICS

YEAR	GP-GS	MIN-AVG	FG-A	PCT	3FG-A	PCT	FT-A	PCT	OFF-DEF-TOT	AVG	PF-D	A	TO	B	S	TP	AVG
2011-12	4-0	29-7.3	2-3	.667	0-0	.000	3-4	.750	2-4-6	1.5	8-0	2	1	0	1	7	1.8
CAREER	4-0	29-7.3	2-3	.667	0-0	.000	3-4	.750	2-4-6	1.5	8-0	2	1	0	1	7	1.8

BIG 12 GAMES



ELLIS NOTEBOOK

BIG 12 COMMISSIONER'S HONOR ROLL FALL 2011

LAST TIME OUT – FEB. 1 at TEXAS A&M

- DNP, coach's decision (DNP in 12 of last 14 games)

OTHER NOTES

- Career vs. Oklahoma State (5 games): 0.6 points, 1.4 rebounds in 6.4 minutes
- Scored season-high 7 points and grabbed 5 rebounds in 16 minutes in Nov. 13 win vs. Jackson State
- Moved into larger reserve role as junior, playing in 31 games, making three starts and averaging a career-best 16.0 minutes
- Averaged 3.6 points on 40.6 percent shooting and 2.3 rebounds in 2010-11
- Traveled to Kenya in May 2010 with Baylor Sports Ministry Team as part of mission trip
- Graduated December 2010 from Baylor with degree in speech communications, first member of family to graduate from college
- Currently attending graduate school

3 – FRED ELLIS

F • 6-6 • 220 • SR. • 3L

SACRAMENTO, CALIF. (SACRAMENTO HS)



Click / scan to view Fred Ellis's complete bio at BaylorBears.com

SEASON HIGHS

Points: 7 – vs. Jackson State, 11/13/11
FG: 1, twice – last vs. South Carolina State, 11/22/11
FGA: 4, twice – last vs. Prairie View A&M, 11/29/11
3FG: 1 – vs. Jackson State, 11/13/11
3FGA: 3 – vs. Jackson State, 11/13/11
FT: 4 – vs. Jackson State, 11/13/11
FTA: 4 – vs. Jackson State, 11/13/11
Rebounds: 5 – vs. Jackson State, 11/13/11
Assists: 5 – vs. Prairie View A&M, 11/29/11
Steals: 2 – vs. Prairie View A&M, 11/29/11
Blocks: 1, twice – last vs. Prairie View A&M, 11/29/11
Turnovers: 2, twice – last vs. San Diego State, 11/15/11
Minutes Played: 17 – vs. Prairie View A&M, 11/29/11

CAREER HIGHS

Points: 14 – vs. Grambling State, 11/12/10
FG: 4, twice – last vs. Lipscomb, 11/22/10
FGA: 8 – vs. Lipscomb, 11/22/10
3FG: 2, twice – last vs. Arizona State, 12/2/10
3FGA: 3 – three times
FT: 5 – vs. Grambling State, 11/12/10
FTA: 6, twice – last vs. Grambling State, 11/12/10
Rebounds: 6, twice – last vs. Bethune-Cookman, 12/15/10
Assists: 5 – vs. Prairie View A&M, 11/29/11
Steals: 2 – four times
Blocks: 2, twice – last vs. Texas Southern, 1/2/11
Turnovers: 4 – vs. Jackson State, 11/18/10
Minutes Played: 32 – vs. La Salle, 11/16/10

MISCELLANEOUS

	GAMES	BU W-L
Double-Figure Points:	2	2-0
Double-Figure Rebounds:	–	0-0
Led Team in Assists:	1	0-1

2011-2012 GAME-BY-GAME

OPPONENT	DATE	GS	MIN	FG	3FG	FT	OR-DR	TR	PF	A	T	B	S	PTS
TEXAS SOUTHERN	11/11		13	0-1	0-0	0-0	1-1	2	0	1	0	0	0	0
JACKSON STATE	11/13		16	1-4	1-3	4-4	0-5	5	3	2	2	1	0	7
SAN DIEGO STATE	11/15		4	0-0	0-0	0-0	0-0	0	1	0	2	0	1	0
S.C. STATE	11/22		12	1-1	0-0	2-2	1-1	2	2	0	1	0	0	4
UTA	11/23		5	0-1	0-0	2-2	0-0	0	1	0	1	0	0	2
PRAIRIE VIEW A&M	11/29		17	0-4	0-2	0-0	1-3	4	3	5	0	1	2	0
at Northwestern	12/4		6	0-0	0-0	0-0	0-1	1	1	0	1	0	0	0
BETHUNE-COOKMAN	12/14		12	1-3	1-2	0-0	0-1	1	1	2	4	0	1	3
at BYU	12/17													
PAUL QUINN	12/19		9	1-1	1-1	2-2	0-1	1	0	3	0	0	0	5
vs. Saint Mary's	12/22													
vs. West Virginia	12/23													
vs. Mississippi State	12/28													
TEXAS A&M	1/2													
at Texas Tech	1/7													
at Kansas State	1/10													
OKLAHOMA STATE	1/14		4	0-0	0-0	0-0	0-3	3	0	1	1	0	0	0
at Kansas	1/16													
MISSOURI	1/21													
at Oklahoma	1/24													
TEXAS	1/28													
at Texas A&M	2/1													

CAREER STATISTICS

YEAR	GP-GS	MIN-AVG	FG-A	PCT	3FG-A	PCT	FT-A	PCT	OFF-DEF-TOT	AVG	PF-D	A	TO	B	S	TP	AVG
2008-09	26-0	182-7.0	13-36	.361	2-10	.200	12-20	.600	16-27-43	1.7	33-0	6	14	8	7	40	1.5
2009-10	29-0	176-6.1	12-41	.293	6-18	.333	10-12	.833	15-30-45	1.6	25-0	5	9	0	6	40	1.4
2010-11	31-3	495-16.0	39-96	.406	8-31	.258	25-32	.781	23-48-71	2.3	51-1	27	33	6	13	111	3.6
2011-12	10-0	98-9.8	4-15	.267	3-8	.375	10-10	1.000	3-16-19	1.9	12-0	14	12	2	4	21	2.1
CAREER	96-3	951-9.9	68-188	.362	19-67	.284	57-74	.770	57-121-178	1.9	121-1	52	68	16	30	212	2.2

CAREER STATISTICS

YEAR	GP-GS	MIN-AVG	FG-A	PCT	3FG-A	PCT	FT-A	PCT	OFF-DEF-TOT	AVG	PF-D	A	TO	B	S	TP	AVG
2008-09	10-0	38-3.8	0-7	.000	0-0	.000	0-2	.000	9-5-14	1.4	14-0	0	5	1	1	0	0.0
2009-10	10-0	50-5.0	3-9	.333	2-4	.500	6-7	.857	6-4-10	1.0	8-0	2	1	0	2	14	1.4
2010-11	16-0	192-12.0	10-29	.345	1-7	.143	3-4	.750	5-18-23	1.4	22-1	10	9	2	3	24	1.5
2011-12	1-0	4-4.0	0-0	.000	0-0	.000	0-0	.000	0-3-3	3.0	0-0	1	1	0	0	0	0.0
CAREER	37-0	284-7.7	13-45	.289	3-11	.273	9-13	.692	20-30-50	1.4	44-1	13	16	3	6	38	1.0



0 – GARY FRANKLIN

G • 6-2 • 195 • SO. • TR
SANTA ANA, CALIF. (CAL)



Click / scan to view Gary Franklin's complete bio at BaylorBears.com

SEASON HIGHS

Points: 8 – vs. West Virginia, 12/23/11
FG: 3 – vs. West Virginia, 12/23/11
FGA: 7 – vs. West Virginia, 12/23/11
3FG: 2, multiple times
3FGA: 6 – vs. West Virginia, 12/23/11
FT: –
FTA: –
Rebounds: 3 – at Texas Tech, 1/7/12
Assists: 2, multiple times
Steals: 1, twice – last at Kansas, 1/16/12
Blocks: –
Turnovers: 2 – vs. Oklahoma State, 1/14/12
Minutes Played: 22 – vs. West Virginia, 12/23/11

CAREER HIGHS

Points: 16 – vs. New Mexico, 11/20
FG: 6 – vs. New Mexico, 11/20
FGA: 14 – multiple times
3FG: 4 – multiple times
3FGA: 12 – vs. Notre Dame, 11/26/10
FT: 2 – multiple times
FTA: 4 – multiple times
Rebounds: 3, twice – last at Texas Tech, 1/7/12
Assists: 4 – three times
Steals: 3 – at Iowa State, 12/4/10
Blocks: 1 – vs. Boston College, 11/28/10
Turnovers: 4 – twice
Minutes Played: 28 – vs. Notre Dame, 11/26/10

MISCELLANEOUS

	GAMES	BU W-L
Double-Figure Points:	–	–
5+ Rebounds:	–	–
5+ Assists:	–	–
Led team in Assists:	–	–
Double-Doubles:	–	–

FRANKLIN NOTEBOOK

BIG 12 COMMISSIONER'S HONOR ROLL FALL 2011

LAST TIME OUT – FEB. 1 at TEXAS A&M

- Had 3 points in 7 minutes off the bench

TRENDS

- Career vs. Oklahoma State (1 game): 6 points in 14 minutes
- 14 of his 15 made FGs this season have been from 3-point range

OTHER NOTES

- Hit his first two FG attempts as a Baylor Bear – a pair of 3-pointers Dec. 17 at BYU
- Sat out fall 2011 semester to satisfy remainder of NCAA year-in-residence transfer rule (sat out spring 2011 semester)
- Transferred in January 2011 after playing 13 games as freshman at Cal
- Started 11 of Cal's first 13 games in 2010-11 at point guard, averaging 8.2 points in 25.7 minutes-per-game
- Scored career-high 16 points and added four assists Nov. 20, 2010, vs. New Mexico

2011-2012 GAME-BY-GAME

OPPONENT	DATE	GS	MIN	FG	3FG	FT	OR-DR	TR	PF	A	T	B	S	PTS
TEXAS SOUTHERN	11/11													
JACKSON STATE	11/13													
SAN DIEGO STATE	11/15													
S.C. STATE	11/22													
UTA	11/23													
PRAIRIE VIEW A&M	11/29													
at Northwestern	12/4													
BETHUNE-COOKMAN	12/14													
at BYU	12/17	12	2-4	2-4	0-0	0-2	2	2	2	2	0	0	0	6
PAUL QUINN	12/19	17	2-5	2-4	0-0	0-1	1	3	2	1	0	0	0	6
vs. Saint Mary's	12/22	9	0-0	0-0	0-0	0-0	0	1	0	0	0	0	0	0
vs. West Virginia	12/23	22	3-7	2-6	0-0	0-2	2	2	2	0	0	0	0	8
vs. Mississippi State	12/28	8	0-2	0-1	0-0	0-0	0	0	0	0	0	0	0	0
TEXAS A&M	1/2	6	0-2	0-2	0-0	0-1	1	1	0	1	0	1	0	0
at Texas Tech	1/7	13	2-5	2-4	0-0	2-1	3	0	1	1	0	0	0	6
at Kansas State	1/10	14	0-2	0-2	0-0	0-0	0	2	1	1	0	0	0	0
OKLAHOMA STATE	1/14	14	2-4	2-4	0-0	0-0	0	4	0	2	0	0	0	6
at Kansas	1/16	13	1-2	1-2	0-0	0-0	0	0	2	0	0	1	3	3
MISSOURI	1/21	11	0-1	0-1	0-0	0-0	0	4	2	1	0	0	0	0
at Oklahoma	1/24	9	1-1	1-1	0-0	1-0	1	0	0	0	0	0	0	3
TEXAS	1/28	6	1-2	1-2	0-0	0-1	1	1	0	1	0	0	0	3
at Texas A&M	2/1	7	1-2	1-2	0-0	0-1	1	0	0	1	0	0	0	3

CAREER STATISTICS

ALL GAMES

YEAR	GP-GS	MIN-AVG	FG-A	PCT	3FG-A	PCT	FT-A	PCT	OFF-DEF-TOT	AVG	PF-D	A	TO	B	S	TP	AVG
2010-11 (CAL)	13-11	334-25.7	35-118	.297	24-82	.293	12-27	.444	0-14-14	1.1	18-0	26	27	1	8	106	8.2
2011-12 (BU)	14-0	161-11.5	15-39	.385	14-35	.400	0-0	.000	3-9-12	0.9	20-0	12	9	0	2	44	3.1
CAREER	27-11	495-18.3	50-157	.318	38-117	.325	12-27	.444	3-23-26	0.9	38-0	38	36	1	10	150	5.6

CAREER STATISTICS

BIG 12 GAMES

YEAR	GP-GS	MIN-AVG	FG-A	PCT	3FG-A	PCT	FT-A	PCT	OFF-DEF-TOT	AVG	PF-D	A	TO	B	S	TP	AVG
2011-12	9-0	93-10.3	8-21	.381	8-20	.400	0-0	.000	3-4-7	0.8	12-0	6	8	0	2	24	2.7
CAREER	9-0	93-10.3	8-21	.381	8-20	.400	0-0	.000	3-4-7	0.8	12-0	6	8	0	2	24	2.7



5 — BRADY HESLIP

G • 6-2 • 180 • SO. • TR
BURLINGTON, ONTARIO (BOSTON COLLEGE)



Click / scan to view **Brady Hespil's** complete bio at *BaylorBears.com*

SEASON/CAREER HIGHS

Points: 19 — vs. West Virginia, 12/23/11
FG: 7 — vs. West Virginia, 12/23/11
FGA: 10, several times
3FG: 6 — at BYU, 12/17/11
3FGA: 10 — at BYU, 12/17/11
FT: 3 — vs. Saint Mary's, 12/22/11
FTA: 3 — vs. Saint Mary's, 12/22/11
Rebounds: 7 — at Northwestern, 12/4/11
Assists: 4, twice — last vs. Oklahoma State, 1/14/12
Steals: 4 — at Kansas State, 1/10/12
Blocks: —
Turnovers: 2 — vs. San Diego State, 11/15/11
Minutes Played: 37 — vs. West Virginia, 12/23/11

MISCELLANEOUS

	GAMES	BU W-L
Double-Figure Points:	12	11-1
Double-Figure Rebounds:	—	—
5+ Assists:	—	—
Double-Doubles:	—	—

HESLIP NOTEBOOK

ALL-BIG 12 CANDIDATE
BIG 12 ROOKIE OF THE WEEK DEC. 26
BIG 12 COMMISSIONER'S HONOR ROLL FALL 2011

LAST TIME OUT — FEB. 1 at TEXAS A&M

- Limited to 3 points in 30 minutes

TRENDS

- Career vs. Oklahoma State (1 game / 1 start): 9 points, 5 rebounds, 4 assists, 2 steals in 21 minutes
- National rankings (thru games Jan. 29): 11th in 3FG%, 45th in 3FG made
- Big 12 rankings (overall): 2nd in 3FG made (2.59), 5th in 3FG% (44.5)
- Big 12 rankings (Big 12 only): 7th in 3FG made (1.89), 9th in 3FG% (36.2)
- Started season 19-for-19 from FT line
- Has made at least 1 3FG in 21 of 22 games (had streak of 13 consecutive games with 3FG)
- 16 games with 2+ 3FG (6 with 4+ 3FG)
- 57 of his 69 FGM have been from 3-point range

OTHER NOTES

- Scored career-high 19 points (5 3FGs) vs. West Virginia (Dec. 23), 18 points (career-high 6 3FGs) at BYU (Dec. 17)
- Transferred from Boston College in June 2010; Sat out 2010-11 season to satisfy NCAA transfer rules
- Trained with Canada's Development National Team in summer 2010 and Canada's Senior Men's National Team in summer 2011
- Father was All-Canadian player at the University of Guelph in 1980
- Uncle, **Jay Triano**, played for Canadian national team for 11 years and spent nearly three years as Toronto Raptors head coach

2011-2012 GAME-BY-GAME

OPPONENT	DATE	GS	MIN	FG	3FG	FT	OR-DR	TR	PF	A	T	B	S	PTS
TEXAS SOUTHERN	11/11	*	25	2-6	2-6	2-2	1-1	2	1	2	1	0	0	8
JACKSON STATE	11/13	*	23	2-6	2-6	2-2	0-0	0	2	3	1	0	1	8
SAN DIEGO STATE	11/15	*	27	5-10	4-8	2-2	0-4	4	2	0	2	0	1	16
S.C. STATE	11/22	*	26	3-6	3-5	0-0	0-0	0	2	1	0	0	0	9
UTA	11/23	*	28	4-9	4-7	0-0	0-3	3	2	0	0	0	0	12
PRAIRIE VIEW A&M	11/29	*	19	1-8	1-6	0-0	0-0	0	3	0	0	0	0	3
at Northwestern	12/4	*	26	4-10	3-9	0-0	1-6	7	2	0	2	0	0	11
BETHUNE-COOKMAN	12/14	*	20	1-4	1-3	0-0	0-0	0	2	1	0	0	0	3
at BYU	12/17	*	33	6-10	6-10	0-0	0-0	0	1	1	1	0	2	18
PAUL QUINN	12/19	*	17	4-6	4-6	0-0	0-2	2	0	3	2	0	1	12
vs. Saint Mary's	12/22	*	29	3-4	2-3	3-3	0-0	0	0	0	0	0	1	11
vs. West Virginia	12/23	*	37	7-10	5-7	0-0	0-0	0	0	1	0	0	2	19
vs. Mississippi State	12/28	*	26	4-7	3-5	0-0	0-0	0	2	0	1	0	0	11
TEXAS A&M	1/2	*	22	0-4	0-2	0-0	0-0	0	1	4	0	0	1	0
at Texas Tech	1/7	*	32	5-7	4-6	2-2	0-1	1	2	1	1	0	0	16
at Kansas State	1/10	*	33	4-10	3-8	2-2	1-1	2	2	2	1	0	4	13
OKLAHOMA STATE	1/14	*	21	3-9	3-7	0-0	3-2	5	0	4	0	0	2	9
at Kansas	1/16	*	26	1-3	1-3	0-0	0-0	0	1	2	0	0	0	3
MISSOURI	1/21	*	25	4-9	2-6	0-0	0-0	0	4	2	1	0	0	10
at Oklahoma	1/24	*	25	2-5	2-4	2-2	0-0	0	1	0	1	0	1	8
TEXAS	1/28	*	27	3-7	1-5	4-5	0-3	3	2	1	0	0	1	11
at Texas A&M	2/1	*	30	1-6	1-6	0-0	0-0	0	0	0	0	0	0	3

CAREER STATISTICS

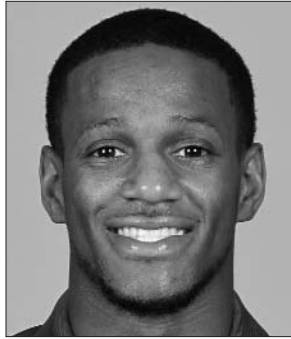
YEAR	GP-GS	MIN-AVG	FG-A	PCT	3FG-A	PCT	FT-A	PCT	OFF-DEF-TOT	AVG	PF-D	A	TO	B	S	TP	AVG
2011-12	22-22	577-26.2	69-156	.442	57-128	.445	19-20	.950	6-23-29	1.3	29-0	28	14	0	17	214	9.7
CAREER	22-22	577-26.2	69-156	.442	57-128	.445	19-20	.950	6-23-29	1.3	29-0	28	14	0	17	214	9.7

ALL GAMES

CAREER STATISTICS

YEAR	GP-GS	MIN-AVG	FG-A	PCT	3FG-A	PCT	FT-A	PCT	OFF-DEF-TOT	AVG	PF-D	A	TO	B	S	TP	AVG
2011-12	9-9	241-26.8	23-60	.383	17-47	.362	10-11	.909	4-7-11	1.2	13-0	16	4	0	9	73	8.1
CAREER	9-9	241-26.8	23-60	.383	17-47	.362	10-11	.909	4-7-11	1.2	13-0	16	4	0	9	73	8.1

BIG 12 GAMES



55 — PIERRE JACKSON

G • 5-10 • 180 • JR. • TR
LAS VEGAS, NEV. (COLLEGE OF SOUTHERN IDAHO)



Click / scan to view Pierre Jackson's complete bio at BaylorBears.com

SEASON/CAREER HIGHS

Points: 23 — vs. West Virginia, 12/23/11
FG: 9 — vs. West Virginia, 12/23/11
FGA: 16 — vs. West Virginia, 12/23/11
3FG: 4 — vs. West Virginia, 12/23/11
3FGA: 7, twice — vs. Mississippi State, 12/28/11
FT: 8 — vs. UT Arlington, 11/23/11
FTA: 10 — vs. UT Arlington, 11/23/11
Rebounds: 6 — at Texas Tech, 1/7/12
Assists: 15 — vs. Missouri, 1/21/12
Steals: 5 — vs. Oklahoma State, 1/14/12
Turnovers: 7 — vs. Texas A&M, 1/2/11
Minutes Played: 38 — vs. West Virginia, 12/23/11

MISCELLANEOUS

	GAMES	BU W-L
Double-Figure Points:	15	13-2
5+ Rebounds:	4	4-0
5+ Assists:	11	9-2
Led team in Assists:	15	13-2
Double-Doubles:	3	1-2

JACKSON NOTEBOOK

ALL-AMERICAN CANDIDATE
BIG 12 NEWCOMER OF THE YEAR CANDIDATE
2012 BOB COUSY AWARD FINALIST (COLLEGIATE POINT GUARD OF THE YEAR)
BIG 12 ROOKIE OF THE WEEK JAN. 16

LAST TIME OUT — FEB. 1 at TEXAS A&M

- Added 14 points, 5 assists, 3 steals in 35 minutes, including eventual game-winning 3 with 17 seconds remaining

TRENDS

- Career vs. Oklahoma State (1 game): 18 points, 8 assists, 5 steals, 3 rebounds in 29 minutes
- Has 71 assists in last 8 games (Had 61 assists in first 14 games)
- National rankings (thru games Jan. 29): 20th in assists, 89th in steals
- Big 12 rankings (overall): 2nd in assists (6.00), 2nd in steals (1.86), 2nd in 3FG% (49.4), 6th in FT% (83.6), 7th in assist-turnover ratio (1.57), 10th in 3FG made (1.86), 16th in scoring (12.6)
- Big 12 rankings (Big 12 only): 1st in assists (8.33), 1st in 3FG% (50.0), 2nd in steals (2.44), 4th in assist-turnover ratio (1.92), 5th in 3FG made (2.22), 13th in FT% (80.6), 16th in scoring (13.2)
- Has at least 1 steal in 20 of 22 games

OTHER NOTES

- Poured in 20 points and career-high 15 assists Jan. 21 vs. Missouri (third double-double / 15 assists 6th-most in school history)
- Scored career-high 23 points, including 3FG that forced OT, in 83-81 win Dec. 23 vs. West Virginia (Las Vegas Classic MVP)
- Led College of Southern Idaho to 2011 NJCAA Division I national title
- Named NJCAA Division I Player of the Year after averaging 18.6 points, 3.8 rebounds, 4.4 assists in 36 games
- Set NJCAA National Tournament record with 44 FT made during CSI's 2011 title run
- Led state of Nevada in assists during senior season at Desert Pines High School in Las Vegas

2011-2012 GAME-BY-GAME

OPPONENT	DATE	GS	MIN	FG	3FG	FT	OR-DR	TR	PF	A	T	B	S	PTS
TEXAS SOUTHERN	11/11		25	3-5	0-1	2-2	1-3	4	3	4	4	0	3	8
JACKSON STATE	11/13		24	2-6	2-3	2-2	1-2	3	1	3	1	0	3	8
SAN DIEGO STATE	11/15		25	2-7	1-3	2-2	0-4	4	4	9	4	0	2	7
S.C. STATE	11/22		16	4-7	2-5	1-2	0-2	2	1	2	4	0	1	11
UTA	11/23		20	3-6	2-2	8-10	1-0	1	2	2	3	0	1	16
PRAIRIE VIEW A&M	11/29		26	4-4	2-2	7-7	1-3	4	2	8	2	0	1	17
at Northwestern	12/4		24	7-8	1-2	1-1	1-0	1	3	3	3	0	1	16
BETHUNE-COOKMAN	12/14		23	4-6	2-2	2-2	0-0	0	1	4	1	0	1	12
at BYU	12/17		30	4-8	2-4	3-3	0-3	3	3	7	5	1	1	13
PAUL QUINN	12/19		21	3-5	1-1	0-0	1-4	5	1	4	5	0	1	7
vs. Saint Mary's	12/22		26	3-9	0-4	0-0	1-0	1	2	4	4	0	0	6
vs. West Virginia	12/23		38	9-16	4-7	1-2	1-4	5	2	4	5	0	3	23
vs. Mississippi State	12/28		28	5-13	2-7	2-3	0-3	3	0	3	4	0	1	14
TEXAS A&M	1/2		30	0-1	0-1	4-4	0-1	1	1	4	7	1	4	4
at Texas Tech	1/7		36	6-12	1-2	6-7	0-6	6	2	7	2	0	3	19
at Kansas State	1/10		33	4-11	2-4	0-0	2-3	5	4	11	3	0	2	10
OKLAHOMA STATE	1/14		29	6-12	5-9	1-2	0-3	3	1	8	4	0	5	18
at Kansas	1/16		33	3-9	2-5	3-4	0-2	2	3	11	3	0	3	11
MISSOURI	1/21	*	35	7-10	3-5	3-4	1-3	4	3	15	6	0	1	20
at Oklahoma	1/24	*	35	5-9	3-4	3-3	1-2	3	0	7	6	0	0	16
TEXAS	1/28	*	36	2-7	2-4	1-2	3-0	3	4	7	5	0	1	7
at Texas A&M	2/1	*	35	4-11	2-6	4-5	1-3	4	3	5	3	0	3	14

CAREER STATISTICS

YEAR	GP-GS	MIN-AVG	FG-A	PCT	3FG-A	PCT	FT-A	PCT	OFF-DEF-TOT	AVG	PF-D	A	TO	B	S	TP	AVG
2011-12	22-4	628-28.5	90-182	.495	41-83	.494	56-67	.836	16-51-67	3.0	46-0	132	84	2	41	277	12.6
CAREER	22-4	628-28.5	90-182	.495	41-83	.494	56-67	.836	16-51-67	3.0	46-0	132	84	2	41	277	12.6

ALL GAMES

CAREER STATISTICS

YEAR	GP-GS	MIN-AVG	FG-A	PCT	3FG-A	PCT	FT-A	PCT	OFF-DEF-TOT	AVG	PF-D	A	TO	B	S	TP	AVG
2011-12	9-4	302-33.6	37-82	.451	20-40	.500	25-31	.806	8-23-31	3.4	21-0	75	39	1	22	119	13.2
CAREER	9-4	302-33.6	37-82	.451	20-40	.500	25-31	.806	8-23-31	3.4	21-0	75	39	1	22	119	13.2

BIG 12 GAMES



34 — CORY JEFFERSON

F • 6-9 • 210 • RSO. • 1L
KILLEEN, TEXAS (KILLEEN HS)



Click / scan to view Cory Jefferson's complete bio at [BaylorBears.com](#)

SEASON HIGHS

Points: 13 — vs. Jackson State, 11/13/11
FG: 5 — vs. UT Arlington, 11/23/11
FGA: 10 — vs. UT Arlington, 11/23/11
3FG: —
3FGA: 1 — vs. UT Arlington, 11/23/11
FT: 5 — vs. Jackson State, 11/13/11
FTA: 7 — vs. Jackson State, 11/13/11
Rebounds: 10 — vs. Texas Southern, 11/11/11
Assists: 1 vs. San Diego State, 11/23/11
Steals: 2 — at Northwestern, 12/4/11
Blocks: 7 — vs. UT Arlington, 11/23/11
Turnovers: 2, twice — last vs. San Diego State, 11/15/11
Minutes Played: 25 — vs. UT Arlington, 11/23/11

CAREER HIGHS

Points: 13 — vs. Jackson State, 11/13/11
FG: 5 — vs. UT Arlington, 11/23/11
FGA: 10 — vs. UT Arlington, 11/23/11
3FG: —
3FGA: 1, twice — last vs. UT Arlington, 11/23/11
FT: 5 — vs. Jackson State, 11/13/11
FTA: 7 — vs. Jackson State, 11/13/11
Rebounds: 10 — vs. Texas Southern, 11/11/11
Assists: 1 vs. San Diego State, 11/23/11
Steals: 2 — at Northwestern, 12/4/11
Blocks: 7 — vs. UT Arlington, 11/23/11
Turnovers: 2, twice — last vs. San Diego State, 11/15/11
Minutes Played: 25 — vs. UT Arlington, 11/23/11

MISCELLANEOUS

	GAMES	BU W-L
Double-Figure Points:	4	4-0
Double-Figure Rebounds:	1	1-0
2+ Blocks:	10	10-0
Led Team in Blocks:	6	6-0
Double-Doubles:	1	1-0

JEFFERSON NOTEBOOK

LAST TIME OUT — FEB. 1 at TEXAS A&M

- Had 3 points, 1 rebound and 1 block in 8 minutes off the bench

TRENDS

- Career vs. Oklahoma State (1 game): 8 points, 4 rebounds, 2 blocks in 13 minutes
- Big 12 rankings (overall): 6th in blocked shots (1.50)
- Surpassed 2009-10 season totals (21 games) through the season's first five games
- Has 2+ blocks in 10 games

OTHER NOTES

- One of 10 Division I student-athletes — along with teammate **A.J. Walton** — who played for Athletes In Action's 10-Day European Tour of Poland and Germany in June 2010 and Macedonia/Kosovo Tour in June 2011
- All-time leading shot blocker in Killeen HS history
- Redshirted in 2010-11 to retain eligibility, did not play in any games.

2011-2012 GAME-BY-GAME

OPPONENT	DATE	GS	MIN	FG	3FG	FT	OR-DR	TR	PF	A	T	B	S	PTS
TEXAS SOUTHERN	11/11		19	4-7	0-0	2-4	4-6	10	3	0	2	2	1	10
JACKSON STATE	11/13		20	4-5	0-0	5-7	4-5	9	3	0	1	3	0	13
SAN DIEGO STATE	11/15		20	0-3	0-0	2-2	1-4	5	2	1	2	2	0	2
S.C. STATE	11/22	*	12	0-2	0-0	0-0	0-3	3	3	0	0	1	1	0
UTA	11/23		25	5-10	0-1	0-0	2-5	7	2	0	1	7	0	10
PRAIRIE VIEW A&M	11/29		20	4-4	0-0	4-6	0-2	2	4	0	0	3	1	12
at Northwestern	12/4		12	3-4	0-0	2-3	1-1	2	2	0	0	2	2	8
BETHUNE-COOKMAN	12/14		19	1-3	0-0	0-0	1-6	7	2	0	0	2	1	2
at BYU	12/17		10	0-3	0-0	0-0	0-0	0	1	1	0	0	0	0
PAUL QUINN	12/19		15	4-5	0-0	1-2	1-6	7	2	0	0	3	1	9
vs. Saint Mary's	12/22		10	3-4	0-0	0-0	1-1	2	1	0	0	1	0	6
vs. West Virginia	12/23		5	0-0	0-0	0-0	0-0	0	1	0	0	0	0	0
vs. Mississippi State	12/28		7	0-1	0-0	1-2	2-0	2	1	0	2	0	1	1
TEXAS A&M	1/2		14	2-2	0-0	1-1	0-0	0	2	0	0	2	0	5
at Texas Tech	1/7		4	0-0	0-0	0-0	0-0	0	0	0	0	0	0	0
at Kansas State	1/10		10	1-1	0-0	0-1	0-0	0	1	0	1	1	0	2
OKLAHOMA STATE	1/14		13	4-5	0-0	0-1	0-4	4	3	0	0	2	0	8
at Kansas	1/16		4	1-2	0-0	0-0	0-2	2	1	0	1	0	0	2
MISSOURI	1/21		3	0-1	0-0	0-0	1-0	1	2	0	0	0	0	0
at Oklahoma	1/24		8	0-0	0-0	0-0	0-1	1	0	0	0	0	0	0
TEXAS	1/28		8	0-0	0-0	0-0	0-0	0	2	1	2	1	0	0
at Texas A&M	2/1		8	1-3	0-1	1-2	1-0	1	1	0	0	1	0	3

CAREER STATISTICS

ALL GAMES

YEAR	GP-GS	MIN-AVG	FG-A	PCT	3FG-A	PCT	FT-A	PCT	OFF-DEF-TOT	AVG	PF-D	A	TO	B	S	TP	AVG
2009-10	21-0	97-4.6	9-23	.391	0-1	.000	9-13	.692	12-13-25	1.2	13-0	0	5	4	2	27	1.3
2010-11 — DID NOT PLAY (REDSHIRTED)																	
2011-12	22-1	266-12.1	37-65	.569	0-2	.000	19-31	.613	19-46-65	3.0	39-0	3	12	33	8	93	4.2
CAREER	43-1	363-8.4	46-88	.523	0-3	.000	28-44	.636	31-59-90	2.1	52-0	3	17	37	10	120	2.8

CAREER STATISTICS

BIG 12 GAMES

YEAR	GP-GS	MIN-AVG	FG-A	PCT	3FG-A	PCT	FT-A	PCT	OFF-DEF-TOT	AVG	PF-D	A	TO	B	S	TP	AVG
2009-10	10-0	29-2.9	1-1	1.000	0-0	.000	3-4	.750	1-3-4	0.4	5-0	0	0	2	0	5	0.5
2010-11 — DID NOT PLAY (REDSHIRTED)																	
2011-12	9-0	72-8.0	9-14	.643	0-1	.000	2-5	.400	2-7-9	1.0	12-0	1	4	7	0	20	2.2
CAREER	19-0	101-5.3	10-15	.667	0-1	.000	5-9	.556	3-10-13	0.7	17-0	1	4	9	0	25	1.3



41 – ANTHONY JONES

F • 6-10 • 195 • SR. • 3L
HOUSTON, TEXAS (YATES HS)



Click / scan to view Anthony Jones' complete bio at BaylorBears.com

SEASON HIGHS

Points: 21 – vs. South Carolina State, 11/22/11
FG: 9 – vs. South Carolina State, 11/22/11
FGA: 14 – vs. South Carolina State, 11/22/11
3FG: 3 – vs. South Carolina State, 11/22/11
3FGA: 5 – vs. Jackson State, 11/13/11
FT: 2, twice – last vs. Jackson State, 11/13/11
FTA: 3, twice – last vs. Jackson State, 11/13/11
Rebounds: 12 – vs. Texas Southern, 11/11/11
Assists: 1, three times
Steals: 5 – vs. South Carolina State, 11/22/11
Blocks: 2 – vs. Jackson State, 11/13/11
Turnovers: 3 – vs. Jackson State, 11/13/11
Minutes Played: 35 – vs. San Diego State, 11/15/11

CAREER HIGHS

Points: 21 – vs. South Carolina State, 11/22/11
FG: 9 – vs. South Carolina State, 11/22/11
FGA: 14, twice – last vs. South Carolina State, 11/22/11
3FG: 3 – five times
3FGA: 6 – vs. Sam Houston State, 3/18/10
FT: 7 – vs. Oklahoma State, 1/17/10
FTA: 7, twice – vs. Oklahoma State, 1/22/11
Rebounds: 12 – vs. Texas Southern, 11/11/11
Assists: 5 – vs. Hardin-Simmons, 11/22/09
Blocks: 2 – seven times
Steals: 5 – vs. South Carolina State, 11/22/11
Turnovers: 3 – four times
Minutes Played: 41 – vs. Iona, 11/27/09

MISCELLANEOUS

	GAMES	BU W-L
Double-Figure Points:	26	21-5
Double-Figure Rebounds:	4	4-0
2+ Blocks:	7	5-2
Double-Doubles:	3	3-0

JONES NOTEBOOK

LAST TIME OUT – FEB. 1 at TEXAS A&M

- Had 2 points and 6 rebounds in 15 minutes off the bench

TRENDS

- Career vs. Oklahoma State (6 games / 4 starts): 9.5 points, 5.2 rebounds in 27.2 minutes (47.4 FG%, 42.9 3FG%, 88.2 FT%)
- Streak of 73 consecutive starts snapped Dec. 4 at Northwestern
- 26 career double-figure scoring games (Baylor 21-5 in such contests)

OTHER NOTES

- Scored career-high 21 points on 9-of-14 shooting and swiped career-high 5 steals in 70-50 win Nov. 22 vs. South Carolina State
- Scored 11 points on 4-of-9 shooting in each of first three games
- Pulled down career-high 12 rebounds vs. Texas Southern – fourth career game with 10+ boards
- Averaging 8.5 points and 5.3 rebounds in 2010-11 ... Only Baylor player to start all 31 games in 2010-11
- One of the highest-ranked recruits in program history

2011-2012 GAME-BY-GAME

OPPONENT	DATE	GS	MIN	FG	3FG	FT	OR-DR	TR	PF	A	T	B	S	PTS
TEXAS SOUTHERN	11/11	*	29	4-9	1-3	2-3	4-8	12	1	0	2	0	2	11
JACKSON STATE	11/13	*	24	4-9	1-5	2-3	2-3	5	0	1	3	2	1	11
SAN DIEGO STATE	11/15	*	35	4-9	2-2	1-1	1-3	4	2	0	1	1	2	11
S.C. STATE	11/22	*	28	9-14	3-4	0-2	2-1	3	0	1	1	1	5	21
UTA	11/23	*	27	4-9	0-2	0-0	4-3	7	2	0	2	0	0	8
PRAIRIE VIEW A&M	11/29	*	21	2-4	1-2	0-0	1-2	3	0	1	0	0	0	5
at Northwestern	12/4		18	0-4	0-4	0-0	0-3	3	0	2	1	0	1	0
BETHUNE-COOKMAN	12/14		18	2-3	1-2	1-2	1-3	4	0	2	2	1	0	6
at BYU	12/17		10	0-1	0-1	0-0	1-0	1	0	1	1	0	1	0
PAUL QUINN	12/19		16	5-10	0-2	0-0	1-2	3	2	0	0	0	0	10
vs. Saint Mary's	12/22		16	2-4	0-2	0-0	0-3	3	1	0	1	0	0	4
vs. West Virginia	12/23		5	0-1	0-0	0-0	0-0	0	0	0	0	0	0	0
vs. Mississippi State	12/28		18	0-3	0-1	1-2	2-5	7	0	0	1	0	3	1
TEXAS A&M	1/2		16	2-4	0-1	0-0	3-2	5	0	0	0	0	1	4
at Texas Tech	1/7		9	0-1	0-1	0-0	0-0	0	0	0	0	0	1	0
at Kansas State	1/10		5	0-1	0-0	0-0	1-0	1	0	0	0	0	0	0
OKLAHOMA STATE	1/14		10	3-5	0-0	0-0	2-2	4	0	1	0	0	1	6
at Kansas	1/16		4	0-1	0-1	0-0	1-0	1	0	0	0	0	0	0
MISSOURI	1/21		11	1-3	1-1	0-0	1-1	2	0	0	0	1	0	3
at Oklahoma	1/24		26	4-8	2-5	1-2	1-1	2	1	2	0	0	0	11
TEXAS	1/28		11	1-1	1-1	0-0	0-0	0	2	0	1	0	0	3
at Texas A&M	2/1		15	1-3	0-1	0-0	1-5	6	0	0	0	0	0	2

CAREER STATISTICS

YEAR	GP-GS	MIN-AVG	FG-A	PCT	3FG-A	PCT	FT-A	PCT	OFF-DEF-TOT	AVG	PF-D	A	TO	B	S	TP	AVG
2008-09	25-0	231-9.2	22-65	.338	12-45	.267	5-8	.625	11-21-32	1.3	11-0	5	8	11	6	61	2.4
2009-10	36-36	958-26.6	85-205	.415	23-69	.333	30-47	.638	48-125-173	4.8	32-1	39	46	15	18	223	6.2
2010-11	31-31	923-29.8	90-174	.517	28-71	.394	54-66	.818	42-121-163	5.3	40-0	29	47	12	20	262	8.5
2011-12	22-6	372-16.9	48-107	.449	13-41	.317	8-15	.533	29-47-76	3.5	11-0	11	17	6	18	117	5.3
CAREER	114-73	2484-21.8	245-551	.445	76-226	.336	97-136	.713	130-314-444	3.9	94-1	84	118	44	62	663	5.8

CAREER STATISTICS

YEAR	GP-GS	MIN-AVG	FG-A	PCT	3FG-A	PCT	FT-A	PCT	OFF-DEF-TOT	AVG	PF-D	A	TO	B	S	TP	AVG
2008-09	8-0	98-12.3	11-26	.423	6-18	.333	2-3	.667	6-9-15	1.9	5-0	0	4	4	1	30	3.8
2009-10	16-16	446-27.9	41-102	.402	7-33	.212	17-22	.773	23-52-75	4.7	19-1	9	22	8	11	106	6.6
2010-11	16-16	490-30.6	50-87	.575	21-39	.538	19-26	.731	18-58-76	4.8	26-0	12	26	6	6	140	8.8
2011-12	9-0	107-11.9	12-27	.444	4-11	.364	1-2	.500	10-11-21	2.3	3-0	3	2	1	3	29	3.2
CAREER	49-32	1141-23.3	114-242	.471	38-101	.376	39-53	.736	57-130-187	3.8	53-1	24	54	19	21	305	6.2



JONES III NOTEBOOK

NATIONAL PLAYER OF THE YEAR CANDIDATE
JOHN R. WOODEN AWARD MIDSEASON TOP 25
BIG 12 PRESEASON PLAYER OF THE YEAR
BIG 12 CO-PLAYER OF THE WEEK DEC. 19, JAN. 16

LAST TIME OUT – FEB. 1 at TEXAS A&M

- Chipped in team-high 15 points and 5 rebounds in 37 minutes

TRENDS

- Career vs. Oklahoma State (3 games / 3 starts): 17.7 points, 8.7 rebounds (58.6 FG%, 50.0 3FG%, 77.3 FT%)
- National rankings (thru games Jan. 29): 33rd in FG%, 87th in rebounds
- Big 12 rankings (overall): 2nd in FG% (55.3), 4th in rebounding (7.8), 7th in scoring (14.7), 14th in blocked shots (0.82)
- Big 12 rankings (Big 12 only): 2nd in FG% (56.5), 3rd in rebounding (8.7), 7th in scoring (15.9)

OTHER NOTES

- Career-high 28 points on career-best 11 FG in Dec. 17 road win at BYU
- Scored 27 points on 10-of-14 shooting in season debut Nov. 29 vs. Prairie View A&M
- Sat out first five games of 2011-12 season to satisfy six-game suspension handed down in March 2011 by NCAA
- One of two Baylor players (**Quincy Miller**) named to 2011-12 Naismith Trophy Preseason Watch List
- Named 2011-12 Preseason Big 12 Player of the Year by the league's coaches, becoming first player in program history to earn conference preseason POY honors
- Named Freshman All-American by USBWA, *Basketball Times* and *CollegeInsider.com*
- Unanimous Big 12 All-Rookie selection as freshman in 2010-11

1 – PERRY JONES III

F • 6-11 • 235 • SO. • 1L
DUNCANVILLE, TEXAS (DUNCANVILLE HS)



Click / scan to view **Perry Jones III's** complete bio at *BaylorBears.com*

SEASON HIGHS

Points: 28 – at BYU, 12/17/11
FG: 11 – at BYU, 12/17/11
FGA: 17 – at Kansas, 1/16/12
3FG: 2, twice – last vs. Saint Mary's, 12/22/11
3FGA: 3 – vs. Saint Mary's, 12/22/11
FT: 8 – vs. Texas, 1/28/12
FTA: 11 – vs. Texas, 1/28/12
Rebounds: 14 – vs. Texas, 1/28/12
Assists: 4 – at BYU, 12/17/11
Steals: 3 – at BYU, 12/17/11
Blocks: 4 – vs. Saint Mary's, 12/22/11
Turnovers: 5 – at Kansas State, 1/10/12
Minutes Played: 41 – vs. West Virginia, 12/23/11

CAREER HIGHS

Points: 28 – at BYU, 12/17/11
FG: 11 – at BYU, 12/17/11
FGA: 17 – at Kansas, 1/16/12
3FG: 2, twice – last vs. Saint Mary's, 12/22/11
3FGA: 3 – vs. Saint Mary's, 12/22/11
FT: 10 – vs. Oklahoma State, 1/22/11
FTA: 12 – vs. Oklahoma State, 1/22/11
Rebounds: 14 – vs. Texas, 1/28/12
Assists: 4, three times
Steals: 5 – at Texas Tech, 1/8/11
Blocks: 4, twice – last vs. Saint Mary's, 12/22/11
Turnovers: 7 – vs. Grambling State, 11/12/10
Minutes Played: 43 – at Texas A&M, 2/5/11

MISCELLANEOUS

	GAMES	BU W-L
Double-Figure Points:	37	26-11
20+ Points:	10	9-1
Double-Figure Rebounds:	10	8-2
Led Team in Rebounds:	18	12-6
Double-Doubles:	7	6-1

2011-2012 GAME-BY-GAME

OPPONENT	DATE	GS	MIN	FG	3FG	FT	OR-DR	TR	PF	A	T	B	S	PTS
TEXAS SOUTHERN	11/11													
JACKSON STATE	11/13													
SAN DIEGO STATE	11/15													
S.C. STATE	11/22													
UTA	11/23													
PRAIRIE VIEW A&M	11/29	*	31	10-14	0-0	7-9	2-4	6	1	0	0	0	1	27
at Northwestern	12/4	*	29	5-8	0-1	2-2	0-6	6	3	2	0	0	1	12
BETHUNE-COOKMAN	12/14	*	25	4-7	0-0	0-0	4-0	4	1	1	4	1	1	8
at BYU	12/17	*	33	11-16	2-2	4-7	3-5	8	3	4	1	0	3	28
PAUL QUINN	12/19	*	23	3-3	0-0	0-0	3-2	5	1	1	2	1	0	6
vs. Saint Mary's	12/22	*	36	5-12	2-3	2-5	3-6	9	3	0	1	4	0	14
vs. West Virginia	12/23	*	41	2-9	0-2	0-0	3-7	10	3	0	1	0	2	4
vs. Mississippi State	12/28	*	36	4-13	0-1	0-0	2-4	6	1	1	2	1	0	8
TEXAS A&M	1/2	*	32	6-12	0-2	2-2	1-11	12	2	1	3	1	0	14
at Texas Tech	1/7	*	29	4-8	0-0	1-6	1-5	6	4	1	3	3	1	9
at Kansas State	1/10	*	32	8-12	0-0	1-2	4-4	8	4	0	5	0	1	17
OKLAHOMA STATE	1/14	*	27	8-12	1-2	2-4	6-6	12	0	3	0	0	2	19
at Kansas	1/16	*	31	8-17	1-4	1-2	2-3	5	2	1	3	2	2	18
MISSOURI	1/21	*	29	4-7	0-0	0-0	0-4	4	1	1	3	0	0	8
at Oklahoma	1/24	*	32	9-15	0-2	3-4	2-10	12	1	0	2	1	2	21
TEXAS	1/28	*	35	7-12	0-1	8-11	3-11	14	3	3	3	0	0	22
at Texas A&M	2/1	*	37	7-13	0-1	1-1	2-3	5	0	2	0	0	0	15

CAREER STATISTICS

YEAR	GP-GS	MIN-AVG	FG-A	PCT	3FG-A	PCT	FT-A	PCT	OFF-DEF-TOT	AVG	PF-D	A	TO	B	S	TP	AVG
2010-11	30-30	1017-33.9	162-295	.549	2-10	.200	91-137	.664	79-136-215	7.2	71-0	36	69	27	16	417	13.9
2011-12	17-17	538-31.6	105-190	.553	6-21	.286	34-55	.618	41-91-132	7.8	33-0	21	33	14	16	250	14.7
CAREER	47-47	1555-33.1	267-485	.551	8-31	.258	125-192	.651	120-227-347	7.4	104-0	57	102	41	32	667	14.2

CAREER STATISTICS

YEAR	GP-GS	MIN-AVG	FG-A	PCT	3FG-A	PCT	FT-A	PCT	OFF-DEF-TOT	AVG	PF-D	A	TO	B	S	TP	AVG
2010-11	16-16	585-36.6	90-161	.559	1-2	.500	68-90	.756	43-67-110	6.9	38-0	15	43	13	6	249	15.6
2011-12	9-9	284-31.6	61-108	.565	2-12	.167	19-32	.594	21-57-78	8.7	17-0	12	22	7	8	143	15.9
CAREER	25-25	869-34.8	151-269	.561	3-14	.214	87-122	.713	64-124-188	7.5	55-0	27	65	20	14	392	15.7



MILLER NOTEBOOK

**ALL-BIG 12 CANDIDATE
BIG 12 FRESHMAN OF THE YEAR CANDIDATE**

LAST TIME OUT – FEB. 1 at TEXAS A&M

- Added 9 points and career-high-tying 11 rebounds in 18 minutes

TRENDS

- Career vs. Oklahoma State (1 game): 21 points, 4 rebounds in 25 minutes
- Averaging 16.3 points and 4.4 rebounds in last 7 games (53.6 FG%, 42.1 3FG%, 86.5 FT%)
- Big 12 rankings (overall): 12th in FT% (77.6), 15th in scoring (12.6), 19th in rebounding (5.3)
- Big 12 rankings (Big 12 only): 6th in FG% (50.0), t12th in scoring (14.8), t14th in rebounding (5.6), 15th in FT% (78.6)

OTHER NOTES

- Has dished out career-high 6 assists in two games – Nov. 23 vs. UTA and Dec. 4 at Northwestern
- Posted career-first double-double (17 points, 11 rebounds) and added career-high 6 assists in win Nov. 23 vs. UT Arlington
- Scored career-high 20 points in 25 minutes in 77-67 win Nov. 15 vs. San Diego State
- One of two Baylor players (**Perry Jones III**) named to 2011-12 Naismith Trophy Preseason Watch List
- Comprised Baylor's consensus top-20 recruiting class of 2011 with Westchester Country Day School teammate **Deuce Bello**
- Named Jordan Brand Classic All-American; Suffered season-ending ACL injury as high school senior
- Fifth consensus top-50 recruit in last five seasons at Baylor, joining **LaceDarius Dunn** (2007), **Anthony Jones** (2008), **Nolan Dennis** (2009) and **Perry Jones III** (2010)

30 – QUINCY MILLER

F • 6-10 • 210 • FR. • HS

HIGH POINT, N.C. (WESTCHESTER COUNTRY DAY)



Click / scan to view Quincy Miller's complete bio at *BaylorBears.com*

SEASON/CAREER HIGHS

Points: 29 – vs. Missouri, 1/21/12
FG: 12 – vs. Missouri, 1/21/12
FGA: 17 – vs. Missouri, 1/21/12
3FG: 3, twice – last vs. Oklahoma State, 1/14/12
3FGA: 5 – vs. Oklahoma State, 1/14/12
FT: 11 – vs. UT Arlington, 11/23/11
FTA: 12 – vs. UT Arlington, 11/23/11
Rebounds: 11, twice – last at Texas A&M, 2/1/12
Assists: 6, twice – last at Northwestern, 12/4/11
Steals: 2, three times
Blocks: 2, multiple points
Turnovers: 5 – at Texas Tech, 1/7/12
Minutes Played: 34, twice – last vs. Texas, 1/28/12

MISCELLANEOUS

	GAMES	BU W-L
Double-Figure Points:	12	10-2
Led Team in Scoring:	6	5-1
Double-Figure Rebounds:	2	2-0
5+ Assists:	2	2-0
Double-Doubles:	1	1-0

2011-2012 GAME-BY-GAME

OPPONENT	DATE	GS	MIN	FG	3FG	FT	OR-DR	TR	PF	A	T	B	S	PTS
TEXAS SOUTHERN	11/11	*	27	6-11	2-4	3-4	0-4	4	3	1	2	1	0	17
JACKSON STATE	11/13	*	22	5-12	3-3	4-5	1-3	4	1	3	2	2	1	17
SAN DIEGO STATE	11/15	*	25	7-12	1-2	5-6	4-2	6	3	1	3	0	1	20
S.C. STATE	11/22		32	2-8	0-1	1-2	0-3	3	1	1	2	1	1	5
UTA	11/23	*	34	3-9	0-2	11-12	4-7	11	3	6	3	0	1	17
PRAIRIE VIEW A&M	11/29						–DNP – (INJURED)							
at Northwestern	12/4	*	24	1-2	0-1	1-2	0-3	3	2	6	2	1	0	3
BETHUNE-COOKMAN	12/14	*	24	3-6	1-2	0-0	2-6	8	1	2	0	1	0	7
at BYU	12/17	*	22	4-9	0-0	0-0	1-3	4	3	1	2	2	0	8
PAUL QUINN	12/19	*	23	1-4	0-2	1-2	0-5	5	1	4	2	2	2	3
vs. Saint Mary's	12/22	*	26	6-10	0-1	3-4	2-3	5	2	0	4	0	2	15
vs. West Virginia	12/23	*	15	3-6	1-2	0-1	0-2	2	2	1	2	0	0	7
vs. Mississippi State	12/28	*	25	4-7	0-1	4-5	2-4	6	4	1	2	0	1	12
TEXAS A&M	1/2	*	27	5-13	0-1	1-5	3-5	8	2	1	1	1	0	11
at Texas Tech	1/7	*	29	3-7	0-2	9-11	4-5	9	2	0	5	0	0	15
at Kansas State	1/10	*	20	4-6	1-2	0-0	0-2	2	4	0	1	0	1	9
OKLAHOMA STATE	1/14	*	25	6-10	3-5	6-6	0-4	4	3	1	0	1	0	21
at Kansas	1/16	*	30	5-12	2-5	5-5	0-2	2	2	1	2	0	2	17
MISSOURI	1/21	*	31	12-17	1-1	4-5	4-0	4	2	0	4	2	0	29
at Oklahoma	1/24	*	22	2-6	1-2	0-0	1-3	4	1	2	0	0	0	5
TEXAS	1/28	*	34	5-11	0-2	8-10	2-4	6	1	1	2	1	0	18
at Texas A&M	2/1	*	18	3-8	3-3	0-0	4-7	11	4	1	0	1	1	9

CAREER STATISTICS

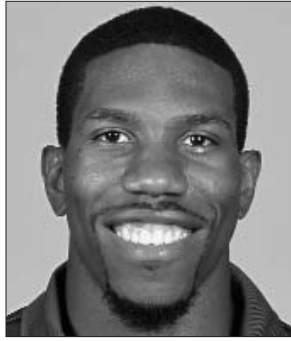
ALL GAMES

YEAR	GP-GS	MIN-AVG	FG-A	PCT	3FG-A	PCT	FT-A	PCT	OFF-DEF-TOT	AVG	PF-D	A	TO	B	S	TP	AVG
2011-12	21-20	535-25.5	90-186	.484	19-44	.432	66-85	.776	34-77-111	5.3	47-0	34	41	16	13	265	12.6
CAREER	21-20	535-25.5	90-186	.484	19-44	.432	66-85	.776	34-77-111	5.3	47-0	34	41	16	13	265	12.6

CAREER STATISTICS

BIG 12 GAMES

YEAR	GP-GS	MIN-AVG	FG-A	PCT	3FG-A	PCT	FT-A	PCT	OFF-DEF-TOT	AVG	PF-D	A	TO	B	S	TP	AVG
2011-12	9-9	236-26.2	45-90	.500	11-23	.478	33-42	.786	18-32-50	5.6	21-0	7	15	6	4	134	14.9
CAREER	9-9	236-26.2	45-90	.500	11-23	.478	33-42	.786	18-32-50	5.6	21-0	7	15	6	4	134	14.9



WALTON NOTEBOOK

LAST TIME OUT – FEB. 1 at TEXAS A&M

- Chipped in 3 points, 3 rebounds, 2 assists and 2 steals in 17 minutes off the bench

TRENDS

- Career vs. Oklahoma State (5 games / 3 starts): 3.8 points, 3.4 assists, 2.4 rebounds, 2.2 steals in 22.4 minutes
- Big 12 rankings (overall): 4th in steals (1.55), 8th in assist-turnover ratio (1.48), 10th in assists (3.23)
- Big 12 rankings (Big 12 only): t13th in steals (1.22)
- Ranks 9th in school history with 144 career steals
- Has 2+ steals in 13 games
- Streak of 48 consecutive starts at point guard snapped Jan. 21 vs. Missouri
- 28 career 5+ assists games (Baylor 23-5 in such contests) ... 23 career games with 3+ steals

OTHER NOTES

- One of 10 Division I student-athletes – along with teammate **Cory Jefferson** – to play for Athletes In Action's 10-Day European Tour of Poland and Germany in June 2010 and Macedonia/Kosovo Tour in June 2011

22 – A.J. WALTON

G • 6-1 • 185 • JR. • 2L
LITTLE ROCK, ARK. (HALL HS)



Click / scan to view A.J. Walton's complete bio at BaylorBears.com

SEASON HIGHS

Points: 10 – vs. Texas A&M, 1/2/12
FG: 4 – vs. Bethune-Cookman, 12/14/11
FGA: 6, twice – last vs. Texas A&M, 1/2/12
3FG: 1, multiple times
3FGA: 3, twice – at BYU, 12/17/11
FT: 6 – at Kansas State, 1/10/12
FTA: 6, three times
Rebounds: 5 – vs. South Carolina State, 11/22/11
Assists: 7 – vs. UT Arlington, 11/23/11
Steals: 3, three times
Blocks: –
Turnovers: 6, twice – last vs. UT Arlington, 11/23/11
Minutes Played: 26, twice – last vs. South Carolina State, 11/22/11

CAREER HIGHS

Points: 15 – vs. Florida State, 12/25/10
FG: 5 – vs. Arizona State, 12/2/10
FGA: 13 – vs. Texas Southern, 1/2/11
3FG: 3 – vs. Florida State, 12/25/10
3FGA: 6, twice – vs. Lipscomb, 11/22/10
FT: 6, three times
FTA: 7 – three times
Rebounds: 7 – vs. Texas Southern, 1/2/11
Assists: 10 – vs. Bethune-Cookman, 12/15/10
Steals: 6 – at Texas, 1/30/10
Blocks: 1 – three times
Turnovers: 9 – vs. Oklahoma State, 1/22/11
Minutes Played: 40 – vs. Hartford, 11/13/09

MISCELLANEOUS

	GAMES	BU W-L
Double-Figure Points:	8	6-2
Led Team in Points:	–	–
20+ Points:	–	–
5+ Assists:	28	23-5
Led Team in Assists:	32	23-9

2011-2012 GAME-BY-GAME

OPPONENT	DATE	GS	MIN	FG	3FG	FT	OR-DR	TR	PF	A	T	B	S	PTS
TEXAS SOUTHERN	11/11	*	20	1-3	1-3	2-2	0-1	1	3	6	2	0	2	5
JACKSON STATE	11/13	*	26	2-6	0-2	2-2	0-3	3	1	5	0	0	3	6
SAN DIEGO STATE	11/15	*	22	1-3	0-1	1-3	1-2	3	4	4	6	0	2	3
S.C. STATE	11/22	*	26	2-4	0-2	1-2	2-3	5	2	6	2	0	3	5
UTA	11/23	*	23	0-3	0-0	0-0	2-2	4	5	7	6	0	2	0
PRAIRIE VIEW A&M at Northwestern	11/29	*	20	0-5	0-0	3-4	2-1	3	1	1	3	0	0	3
BETHUNE-COOKMAN	12/4	*	21	1-2	0-1	0-0	0-4	4	2	5	4	0	2	2
at BYU	12/14	*	20	4-5	0-0	1-3	0-1	1	2	3	1	0	2	9
at BYU	12/17	*	17	2-4	1-3	0-1	0-4	4	3	0	1	0	2	5
PAUL QUINN	12/19	*	15	1-3	1-1	0-0	0-3	3	1	5	2	0	0	3
vs. Saint Mary's	12/22	*	19	2-4	0-0	0-0	1-2	3	1	2	2	0	1	4
vs. West Virginia	12/23	*	21	1-4	0-0	5-6	1-3	4	3	4	2	0	1	7
vs. Mississippi State	12/28	*	19	0-2	0-1	0-0	2-4	6	2	3	1	0	3	0
TEXAS A&M	1/2	*	21	2-6	1-2	5-6	0-4	4	2	2	2	0	0	10
at Texas Tech	1/7	*	12	1-1	0-0	0-0	0-1	1	3	2	1	0	1	2
at Kansas State	1/10	*	24	1-4	0-0	6-6	1-1	2	4	6	3	0	3	8
OKLAHOMA STATE	1/14	*	20	0-1	0-0	0-0	2-0	2	5	3	2	0	0	0
at Kansas	1/16	*	24	3-6	0-2	0-0	0-1	1	5	2	0	0	2	6
MISSOURI	1/21	*	22	0-2	0-2	0-0	0-0	0	4	2	2	0	3	0
at Oklahoma	1/24	*	11	0-0	0-0	0-0	0-1	1	3	1	3	0	0	0
at Texas A&M	2/1	*	17	1-6	0-1	1-2	0-3	3	1	2	1	0	2	3

CAREER STATISTICS

YEAR	GP-GS	MIN-AVG	FG-A	PCT	3FG-A	PCT	FT-A	PCT	OFF-DEF-TOT	AVG	PF-D	A	TO	B	S	TP	AVG
2009-10	36-4	634-17.6	48-97	.495	17-37	.459	24-43	.558	14-68-82	2.3	76-2	71	47	2	42	137	3.8
2010-11	30-30	990-33.0	77-192	.401	30-78	.385	53-84	.631	18-77-95	3.2	90-4	142	101	2	68	237	7.9
2011-12	22-18	432-19.6	25-75	.333	4-21	.190	29-39	.744	14-44-58	2.6	60-3	71	48	0	34	83	3.8
CAREER	88-52	2056-23.4	150-364	.412	51-136	.375	106-166	.639	46-189-235	2.7	229-9	284	196	4	144	457	5.2

CAREER STATISTICS

YEAR	GP-GS	MIN-AVG	FG-A	PCT	3FG-A	PCT	FT-A	PCT	OFF-DEF-TOT	AVG	PF-D	A	TO	B	S	TP	AVG
2009-10	16-0	262-16.4	18-39	.462	6-15	.400	14-19	.737	3-23-26	1.6	36-1	24	13	1	20	56	3.5
2010-11	16-16	522-32.6	34-94	.362	14-37	.378	26-44	.591	8-38-46	2.9	52-2	68	53	0	39	108	6.8
2011-12	9-5	163-18.1	8-27	.296	1-7	.143	14-16	.875	3-11-14	1.6	30-2	20	16	0	11	31	3.4
CAREER	41-21	947-23.1	60-160	.375	21-59	.356	54-79	.684	14-72-86	2.1	118-5	112	82	1	70	195	4.8

2011-2012 QUICK-CLICK GAME RECAPS

GAME 1

12/12 BAYLOR 77, TEXAS SOUTHERN 57

NOV. 11, 2011 / WACO, TEXAS / FERRELL CENTER (7,359)

- Baylor improved to 8-1 in regular-season openers in the **Scott Drew** era.
- **Quincy Miller**, making career-first start, scored team-high 17 points.
- **Cory Jefferson** posted his career-first double-double (10 pts, 10 reb).
- **Anthony Jones** made his 68th consecutive start, while recording his third career double-double with 11 points and a career-high 12 rebounds.



GAME 2

12/12 BAYLOR 92, JACKSON STATE 59

NOV. 13, 2011 / WACO, TEXAS / FERRELL CENTER (6,103)

- Four of Baylor's frontcourt members tallied double figures, combining for 55 of the team's 92 points.
- **Quincy Miller** once again led all scorers with 17 points.
- **Cory Jefferson** finished one rebound shy of his second consecutive double-double, finishing with 13 pts, 9 reb and 3 blk.
- **Quincy Acy** added 14 points, while **G A.J. Walton** dished out team-best 5 assists.



GAME 3

11/12 BAYLOR 77, RV/NR SAN DIEGO STATE 67

NOV. 15, 2011 / WACO, TEXAS / FERRELL CENTER (6,941)

- **Quincy Miller** scored career-high 20 points (15 in second half).
- Baylor won its 21st consecutive non-conference home game.
- **Brady Heslip** tallied a then-career-high 16 points on 5-of-10 shooting.
- Seven different BU players logged 20+ minutes.
- Baylor started 3-0 for the fifth consecutive season.



GAME 4

9/10 BAYLOR 70, SOUTH CAROLINA STATE 50

NOV. 22, 2011 / WACO, TEXAS / FERRELL CENTER (6,743)

- It was the first series meeting between the schools as Baylor improved to 11-0 all-time vs. Mid-Eastern Athletic Conference members.
- **Anthony Jones** posted career highs for points (21) and steals (5).
- **Cory Jefferson** made his career-first start, held scoreless in 12 minutes.
- **Pierre Jackson** had a then-career-high 11 points.



GAME 5

9/10 BAYLOR 75, UT ARLINGTON 65

NOV. 23, 2011 / WACO, TEXAS / FERRELL CENTER (5,988)

- A season-high five players scored in double figures as Baylor improved to 5-0 for the third time in the last four seasons.
- **Quincy Miller** posted his career-first double-double with 17 points and career highs for both rebounds (11) and assists (6).
- **Quincy Acy** (6) and **Cory Jefferson** (7) combined for 13 blocks, both setting career highs.
- **Pierre Jackson** (16) and **Brady Heslip** (12) combined for 28 points, while combining for six 3-point field goals (Heslip with four).



GAME 6

7/8 BAYLOR 90, PRAIRIE VIEW A&M 54

NOV. 29, 2011 / WACO, TEXAS / FERRELL CENTER (6,072)

- **Perry Jones III** scored a career-high-tying 27 points in his season debut, leading Baylor to a 90-54 runaway victory.
- **Quincy Acy** posted his second consecutive double-double with 13 points and 11 rebounds.
- **Pierre Jackson** established a career high 17 points, going perfect from the floor (4-4 FG, 7-7 FT).
- Prairie View led 11-2 early, but Baylor outscored the Panthers 88-43 for the remainder of the game.



GAME 7

7/8 BAYLOR 69, RV/NR NORTHWESTERN 41

DEC. 4, 2011 / EVANSTON, ILL. / WELSH-RYAN ARENA (6,316)

- It was Baylor's first non-conference true road game since Jan. 2, 2009, when it knocked off South Carolina 85-74 in Columbia, S.C. (a span of 701 days).
- Baylor started 7-0 in consecutive seasons for the first time.
- Senior F **Anthony Jones'** streak of 73 consecutive starts came to an end.
- Senior F **Quincy Acy** recorded his third straight double-figure scoring game, sixth of the season and 52nd of his career. Acy finished with 16 points and tied his career high with 6 blocks.



GAME 8

6/7 BAYLOR 69, BETHUNE-COOKMAN 42

DEC. 14, 2011 / WACO, TEXAS / FERRELL CENTER (8,838)

- Senior F **Quincy Acy** (10 points) became the 25th 1,000-point scorer in Baylor history when he hit a free throw for his ninth point in the game with 3:58 remaining in the second half.
- With four blocks in the game, Acy tied former teammate **Ekpe Udoh** (133) for third on Baylor's career blocks list.



GAME 9

6/7 BAYLOR 86, BYU 83

DEC. 17, 2011 / PROVO, UTAH / MARRIOTT CENTER (22,700)

- **Perry Jones III** scored a career-high 28 points, capped off by a tip-in with 20 seconds left to give Baylor resulting 86-83 road win.
- Baylor won its seventh consecutive non-conference true road game, while snapping BYU's 19-game non-conference home winning streak.
- **Brady Heslip** scored a career-high 18 points, while **Pierre Jackson** blocked Brandon Davies' potential game-tying 3-pointer as time expired.



GAME 10

6/7 BAYLOR 95, PAUL QUINN 54

DEC. 19, 2011 / WACO, TEXAS / FERRELL CENTER (5,034)

- Behind **Quincy Acy's** 24-point, 7-dunk performance, Baylor had 17 slams from six different players, improving to 10-0 with a 95-54 win.
- 11 different Bears scored, including junior walk-on **Jacob Neubert**, who scored 2 points and added 2 rebounds and a block.
- **Brady Heslip** scored 12 points — all on 3s — and **Anthony Jones** had 10 points.



GAME 11

6/7 BAYLOR 72, NR/RV SAINT MARY'S 59

DEC. 22, 2011 / LAS VEGAS, NEV. / ORLEANS ARENA (1,526)

- In a rematch of the 2010 NCAA South Region semifinal, No. 6 Baylor had four different players score in double figures, including a double-double from **Quincy Acy** (12 points, 10 rebounds).
- Baylor held Saint Mary's to 25 percent from 3-point range (5-of-20), while the Bears connected on 36 percent of its long-range shots.



GAME 12

6/7 BAYLOR 83, WEST VIRGINIA 81

DEC. 23, 2011 / LAS VEGAS, NEV. / ORLEANS ARENA (1,526)

- Trailing by as many as 11 points, Baylor fought its way back to take a double-digit lead in the second half. West Virginia eventually took a 3-point lead in the final 30 seconds of regulation, but **Pierre Jackson** tied the game to send it to overtime.
- **Pierre Jackson** scored a career-high 23 points and was named Las Vegas Classic MVP after reeling off 8 straight points during the second half and overtime.
- **Brady Heslip** and **Quincy Acy** were named to the Las Vegas Classic All-Tournament team.



GAME 13

6/7 BAYLOR 54, 15/14 MISSISSIPPI STATE 52

DEC. 28, 2011 / DALLAS, TEXAS / AMERICAN AIRLINES CENTER (6,707)

- **Pierre Jackson's** layup with 29 seconds remaining proved to be the game-winner as No. 6 Baylor set the program record for the best start to a season with a 13-0 record.
- Baylor snapped a four-game losing streak in games at American Airlines Center.
- Baylor's 13-game winning streak is tied for the longest in school history. Baylor won 13 straight games from Jan.-Feb. 1946.
- It was Baylor's first win against a ranked non-conference opponent since Nov. 28, 2008 (an 87-78 win over No. 14/14 Arizona State).



GAME 14

4/5 BAYLOR 61, RV/NR TEXAS A&M 52

JAN. 2, 2012 / WACO, TEXAS / FERRELL CENTER (8,424)

- Baylor extended its winning streak to a school-record 14 games with a 61-52 win over Texas A&M in the Big 12 opener for both schools.
- **Perry Jones III** posted his first double-double of the season, leading the Bears with 14 points and 12 rebounds. **Quincy Acy** — one of four Baylor players in double figures — added 13 points, 6 rebounds and 3 blocks in 27 minutes.
- **Brady Heslip** was held scoreless in 22 minutes, snapping his streak of 13 straight games with at least 1 3FG made.



2011-2012 QUICK-CLICK GAME RECAPS

GAME 15

4/5 BAYLOR 73, TEXAS TECH 60

JAN. 7, 2012 / LUBBOCK, TEXAS / UNITED SPIRIT ARENA (8,247)

- Baylor extended its winning streak to a school-record 15 games and started 2-0 in Big 12 play for only the fourth times with a 73-60 road win at Texas Tech.
- Guards **Pierre Jackson** (19 points) and **Brady Heslip** (16 points) both posted their 9th double-figure scoring games of the season. The pair combined for 35 points after combining for only 4 points in Baylor's Jan. 2 Big 12 opener against Texas A&M.
- Freshman **Quincy Miller** fell one rebound short of his second career double-double, finishing with 15 points and 9 rebounds.



GAME 21

6/7 BAYLOR 76, TEXAS 71

JAN. 28, 2012 / WACO, TEXAS / FERRELL CENTER (10,299)

- Baylor improved its record to 5-1 in games decided by 5 points or fewer with a 76-71 home win over long-time conference rival Texas on CBS.
- **Perry Jones III** posted his second consecutive 20-10 game, scoring 22 points and grabbing a career-high 14 rebounds.
- **Pierre Jackson** hit the go-ahead 3-pointer with 2:36 remaining in the second half.
- #OSquared — **Quincy Miller** (18 points, 6 rebounds) and **Quincy Acy** (10 points, 10 rebounds) — combined for 28 points and 16 rebounds.



GAME 16

4/4 BAYLOR 75, 18/18 KANSAS STATE 73

JAN. 10, 2012 / MANHATTAN, KAN. / BRAMLAGE COLISEUM (12,528)

- **Pierre Jackson** recorded his career-first double-double with 10 points and a career-best 11 assists, while three other Bears scored in double figures to extend Baylor's season-opening 16-game winning streak.
- **Quincy Acy** moved up to 19th on Baylor's career scoring list, finishing with 13 points, and tied former teammate **Mamadou Diene** for 2nd on the school's career blocks list.
- Baylor is 3-0 in conference play for only the third time in the Big 12 era.



GAME 22

6/6 BAYLOR 63, TEXAS A&M 60

FEB. 1, 2012 / COLLEGE STATION, TEXAS / REED ARENA (9,309)

- **Pierre Jackson** scored Baylor's final 8 points, including the eventual game-winning 3-pointer with 17 seconds remaining, to give the Bears a 63-60 win at Texas A&M.
- Baylor owned an 11-point halftime lead, but fell behind by as many as 5 points in the second half. Baylor improved to 6-1 this season in games decided by 5 points or fewer.
- Baylor swept the regular-season series with Texas A&M for the second consecutive season.
- Baylor is 7-2 in conference play for the first time since 1968-69.



GAME 17

7/7 BAYLOR 106, OKLAHOMA STATE 65

JAN. 14, 2012 / WACO, TEXAS / FERRELL CENTER (9,594)

- Behind four players in double-figures and a season-high 15 3-pointers, No. 4 Baylor improved to 17-0 with a 41-point win over Oklahoma State.
- It was Baylor's first 100-point game since Nov. 22, 2009, when it scored 106 against Hardin-Simmons. Its 106 points were the most by a Baylor team in a Big 12 game since scoring 116 in a 5OT win at Texas A&M (Jan. 23, 2008).
- Baylor's 106 points were their most ever in regulation of a Big 12 game.
- Baylor's 41-point margin of victory was its largest in a Big 12 games since beating Texas A&M 97-45 on Feb. 3, 2002.



GAME 18

7/7 KANSAS 92, 3/3 BAYLOR 74

JAN. 16, 2012 / LAWRENCE, KAN. / ALLEN FIELDHOUSE (16,300)

- Baylor suffered its first loss of the season, falling 92-74 at No. 7 Kansas.
- Four Baylor players scored in double figures, led by **Perry Jones III's** 18 points. **Pierre Jackson** posted his second career double-double (11 points, 11 assists).
- Kansas became only Baylor's second opponent to shoot 50% or better this season. Both Kansas and Kansas State shot 50% or better on the road.



GAME 19

5/5 MISSOURI 89, 3/3 BAYLOR 88

JAN. 21, 2012 / WACO, TEXAS / FERRELL CENTER (10,617)

- Baylor suffered its second loss to a Top 10 team in five days, falling at home in front of a sellout crowd — the second-largest in Ferrell Center history.
- It was the first Top 5 matchup and second Top 10 matchup in program history. It was the first Top 10 men's basketball matchup in Ferrell Center history.
- **Pierre Jackson** had a career-high 15 assists, which tied the Big 12 record for assists in a conference game and tied for the fourth-most ever by a Big 12 player in any game.
- Jackson (20 points, 15 assists) had his third double-double, his 13th double-figure scoring game and his seventh double-figure scoring game in the last eight contests.



GAME 20

6/7 BAYLOR 77, OKLAHOMA 65

JAN. 24, 2012 / NORMAN, OKLA. / LLOYD NOBLE CENTER (8,004)

- Baylor snapped its two-game losing streak with a 77-65 road win at Oklahoma, just its second win in Norman in 35 years.
- **Perry Jones III** led all players with 21 points and 12 rebounds, his career-first 20-10 game.
- Jones III scored 15+ points for the third straight Big 12 road game.
- **Quincy Acy** tied **Arthur Edwards** for 9th on Baylor's career rebounding list, while adding 13 points and 3 blocked shots.



2011-12 BAYLOR BASKETBALL
Baylor Combined Team Statistics (as of Feb 01, 2012)
All games

RECORD:	OVERALL	HOME	AWAY	NEUTRAL
ALL GAMES	20-2	11-1	6-1	3-0
CONFERENCE	7-2	3-1	4-1	0-0
NON-CONFERENCE	13-0	8-0	2-0	3-0

##	Player	gp-gs	min	avg	Total		3-Point		F-Throw		Rebounds			pf	dq	a	to	blk	stl	pts	avg	
					fg-fga	fg%	3fg-fga	3fg%	ft-fta	ft%	off	def	tot									avg
01	Jones III, Perry	17-17	538	31.6	105-190	.553	6-21	.286	34-55	.618	41	91	132	7.8	33	0	21	33	14	16	250	14.7
30	Miller, Quincy	21-20	535	25.5	90-186	.484	19-44	.432	66-85	.776	34	77	111	5.3	47	0	34	41	16	13	265	12.6
55	Jackson, Pierre	22-4	628	28.5	90-182	.495	41-83	.494	56-67	.836	16	51	67	3.0	46	0	132	84	2	41	277	12.6
04	Acy, Quincy	22-22	642	29.2	94-161	.584	3-5	.600	84-109	.771	51	98	149	6.8	61	1	19	37	51	22	275	12.5
05	Heslip, Brady	22-22	577	26.2	69-156	.442	57-128	.445	19-20	.950	6	23	29	1.3	29	0	28	14	0	17	214	9.7
41	Jones, Anthony	22-6	372	16.9	48-107	.449	13-41	.317	8-15	.533	29	47	76	3.5	11	0	11	17	6	18	117	5.3
34	Jefferson, Cory	22-1	266	12.1	37-65	.569	0-2	.000	19-31	.613	19	46	65	3.0	39	0	3	12	33	8	93	4.2
14	Bello, Deuce	15-0	166	11.1	22-46	.478	2-10	.200	15-28	.536	11	25	36	2.4	24	0	7	16	5	9	61	4.1
22	Walton, A.J.	22-18	432	19.6	25-75	.333	4-21	.190	29-39	.744	14	44	58	2.6	60	3	71	48	0	34	83	3.8
00	Franklin, Gary	14-0	161	11.5	15-39	.385	14-35	.400	0-0	.000	3	9	12	0.9	20	0	12	9	0	2	44	3.1
03	Ellis, Fred	10-0	98	9.8	4-15	.267	3-8	.375	10-10	1.000	3	16	19	1.9	12	0	14	12	2	4	21	2.1
02	Neubert, Jacob	8-0	10	1.3	1-3	.333	0-0	.000	0-0	.000	1	2	3	0.4	1	0	0	0	1	0	2	0.3
Team											31	32	63				1					
Total.....		22	4425		600-1225	.490	162-398	.407	340-459	.741	259	561	820	37.3	383	4	352	324	130	184	1702	77.4
Opponents.....		22	4425		502-1269	.396	131-406	.323	256-390	.656	279	426	705	32.0	421	12	271	337	63	155	1391	63.2

TEAM STATISTICS	BU	OPP	Date	Opponent	Score	Att.
SCORING	1702	1391	11/11/11	TEXAS SOUTHERN	w 77-57	7359
Points per game	77.4	63.2	11/13/11	JACKSON STATE	w 92-59	6103
Scoring margin	+14.1	-	11/15/11	SAN DIEGO STATE	w 77-67	6941
FIELD GOALS-ATT	600-1225	502-1269	11/22/11	SOUTH CAROLINA STATE	w 70-50	6438
Field goal pct	.490	.396	11/23/11	UT ARLINGTON	w 75-65	5988
3 POINT FG-ATT	162-398	131-406	11/29/11	PRAIRIE VIEW A&M	w 90-54	6072
3-point FG pct	.407	.323	12/04/11	at Northwestern	w 69-41	6316
3-pt FG made per game	7.4	6.0	12/14/11	BETHUNE-COOKMAN	w 69-42	8838
FREE THROWS-ATT	340-459	256-390	12/17/11	at BYU	w 86-83	22700
Free throw pct	.741	.656	12/19/11	PAUL QUINN	w 95-54	5034
F-Throws made per game	15.5	11.6	12/22/11	vs Saint Mary's	w 72-59	1526
REBOUNDS	820	705	12/23/11	vs West Virginia	wot 83-81	1526
Rebounds per game	37.3	32.0	12/28/11	vs Mississippi State	w 54-52	6707
Rebounding margin	+5.2	-	* 01/02/12	TEXAS A&M	w 61-52	8424
ASSISTS	352	271	* 01/07/12	at Texas Tech	w 73-60	8247
Assists per game	16.0	12.3	* 01/10/12	at Kansas State	w 75-73	12528
TURNOVERS	324	337	* 01/14/12	OKLAHOMA STATE	w 106-65	9594
Turnovers per game	14.7	15.3	* 01/16/12	at Kansas	L 74-92	16300
Turnover margin	+0.6	-	* 01/21/12	MISSOURI	L 88-89	10617
Assist/turnover ratio	1.1	0.8	* 01/24/12	at Oklahoma	w 77-65	8004
STEALS	184	155	* 01/28/12	TEXAS	w 76-71	10299
Steals per game	8.4	7.0	* 02/01/12	at Texas A&M	w 63-60	9309
BLOCKS	130	63				
Blocks per game	5.9	2.9				
ATTENDANCE	91707	93163				
Home games-Avg/Game	12-7642	7-11915				
Neutral site-Avg/Game	-	3-3253				

* - Conference game

Score by Periods	1st	2nd	OT	Totals
Baylor	801	894	7	1702
Opponents	648	738	5	1391

2011-12 BAYLOR BASKETBALL
Baylor Combined Team Statistics (as of Feb 01, 2012)
Conference games

RECORD:	OVERALL	HOME	AWAY	NEUTRAL
ALL GAMES	7-2	3-1	4-1	0-0
CONFERENCE	7-2	3-1	4-1	0-0
NON-CONFERENCE	0-0	0-0	0-0	0-0

#	Player	gp-gs	min	avg	Total		3-Point		F-Throw		Rebounds				pf	dq	a	to	blk	stl	pts	avg		
					fg-fga	fg%	3fg-fga	3fg%	ft-fta	ft%	off	def	tot	avg										
01	Jones III, Perry	9-9	284	31.6	61-108	.565	2-12	.167	19-32	.594	21	57	78	8.7	17	0	12	22	7	8	143	15.9		
30	Miller, Quincy	9-9	236	26.2	45-90	.500	11-23	.478	33-42	.786	18	32	50	5.6	21	0	7	15	6	4	134	14.9		
55	Jackson, Pierre	9-4	302	33.6	37-82	.451	20-40	.500	25-31	.806	8	23	31	3.4	21	0	75	39	1	22	119	13.2		
04	Acy, Quincy	9-9	268	29.8	40-69	.580	2-3	.667	31-36	.861	20	32	52	5.8	31	1	12	17	19	9	113	12.6		
05	Heslip, Brady	9-9	241	26.8	23-60	.383	17-47	.362	10-11	.909	4	7	11	1.2	13	0	16	4	0	9	73	8.1		
22	Walton, A.J.	9-5	163	18.1	8-27	.296	1-7	.143	14-16	.875	3	11	14	1.6	30	2	20	16	0	11	31	3.4		
41	Jones, Anthony	9-0	107	11.9	12-27	.444	4-11	.364	1-2	.500	10	11	21	2.3	3	0	3	2	1	3	29	3.2		
00	Franklin, Gary	9-0	93	10.3	8-21	.381	8-20	.400	0-0	.000	3	4	7	0.8	12	0	6	8	0	2	24	2.7		
34	Jefferson, Cory	9-0	72	8.0	9-14	.643	0-1	.000	2-5	.400	2	7	9	1.0	12	0	1	4	7	0	20	2.2		
14	Bello, Deuce	4-0	29	7.3	2-3	.667	0-0	.000	3-4	.750	2	4	6	1.5	8	0	2	1	0	1	7	1.8		
02	Neubert, Jacob	1-0	1	1.0	0-0	.000	0-0	.000	0-0	.000	0	0	0	0.0	0	0	0	0	0	0	0	0.0		
03	Ellis, Fred	1-0	4	4.0	0-0	.000	0-0	.000	0-0	.000	0	3	3	3.0	0	0	1	1	0	0	0	0.0		
Team											13	13	26											
Total.....		9	1800		245-501	.489	65-164	.396	138-179	.771	104	204	308	34.2	168	3	155	129	41	69	693	77.0		
Opponents.....		9	1800		223-510	.437	53-164	.323	128-178	.719	107	171	278	30.9	162	4	131	122	25	61	627	69.7		

TEAM STATISTICS	BU	OPP	Date	Opponent	Score	Att.
SCORING	693	627	* 01/02/12	TEXAS A&M	w 61-52	8424
Points per game	77.0	69.7	* 01/07/12	at Texas Tech	w 73-60	8247
Scoring margin	+7.3	-	* 01/10/12	at Kansas State	w 75-73	12528
FIELD GOALS-ATT	245-501	223-510	* 01/14/12	OKLAHOMA STATE	w 106-65	9594
Field goal pct	.489	.437	* 01/16/12	at Kansas	L 74-92	16300
3 POINT FG-ATT	65-164	53-164	* 01/21/12	MISSOURI	L 88-89	10617
3-point FG pct	.396	.323	* 01/24/12	at Oklahoma	w 77-65	8004
3-pt FG made per game	7.2	5.9	* 01/28/12	TEXAS	w 76-71	10299
FREE THROWS-ATT	138-179	128-178	* 02/01/12	at Texas A&M	w 63-60	9309
Free throw pct	.771	.719				
F-Throws made per game	15.3	14.2	* - Conference game			
REBOUNDS	308	278				
Rebounds per game	34.2	30.9				
Rebounding margin	+3.3	-				
ASSISTS	155	131				
Assists per game	17.2	14.6				
TURNOVERS	129	122				
Turnovers per game	14.3	13.6				
Turnover margin	-0.8	-				
Assist/turnover ratio	1.2	1.1				
STEALS	69	61				
Steals per game	7.7	6.8				
BLOCKS	41	25				
Blocks per game	4.6	2.8				
ATTENDANCE	38934	54388				
Home games-Avg/Game	4-9734	5-10878				
Neutral site-Avg/Game	-	0-0				

Score by Periods	1st	2nd	Totals
Baylor	312	381	693
Opponents	274	353	627

2011-12 BAYLOR BASKETBALL
 Baylor Team Game-by-Game (as of Feb 01, 2012)
 All games

TEAM STATISTICS

Opponent	Date	Score		Total		3-Pointers		Free throws		Rebounds				pf	a	t/o	blk	stl	pts	avg
				fg-fga	pct	3fg-fga	pct	ft-fta	pct	off	def	tot	avg							
TEXAS SOUTHERN	11/11/11	77-57	W	26-53	.491	6-18	.333	19-29	.655	15	31	46	46.0	20	16	17	7	11	77	77.0
JACKSON STATE	11/13/11	92-59	W	26-57	.456	10-23	.435	30-37	.811	15	26	41	43.5	16	17	13	11	11	92	84.5
SAN DIEGO STATE	11/15/11	77-67	W	24-52	.462	9-17	.529	20-24	.833	10	26	36	41.0	21	18	21	5	10	77	82.0
SOUTH CAROLINA STAT	11/22/11	70-50	W	26-57	.456	8-19	.421	10-18	.556	10	24	34	39.2	14	12	12	6	13	70	79.0
UT ARLINGTON	11/23/11	75-65	W	23-57	.404	6-16	.375	23-28	.821	18	31	49	41.2	21	16	23	13	5	75	78.2
PRAIRIE VIEW A&M	11/29/11	90-54	W	28-54	.519	4-13	.308	30-37	.811	9	30	39	40.8	16	17	8	5	9	90	80.2
at Northwestern	12/04/11	69-41	W	29-48	.604	4-18	.222	7-12	.583	5	32	37	40.3	18	18	15	9	8	69	78.6
BETHUNE-COOKMAN	12/14/11	69-42	W	28-50	.560	6-11	.545	7-15	.467	11	24	35	39.6	14	15	16	9	6	69	77.4
at BYU	12/17/11	86-83	W	32-63	.508	13-25	.520	9-15	.600	10	21	31	38.7	19	17	13	4	10	86	78.3
PAUL QUINN	12/19/11	95-54	W	38-63	.603	9-18	.500	10-14	.714	15	36	51	39.9	15	24	15	11	7	95	80.0
vs Saint Mary's	12/22/11	72-59	W	26-52	.500	5-14	.357	15-20	.750	12	25	37	39.6	15	7	15	5	6	72	79.3
vs West Virginia	12/23/11	83-81	Wot	30-63	.476	12-25	.480	11-14	.786	11	25	36	39.3	16	12	12	0	9	83	79.6
vs Mississippi State	12/28/11	54-52	W	19-55	.345	5-17	.294	11-17	.647	14	26	40	39.4	10	8	15	4	10	54	77.6
TEXAS A&M	01/02/12	61-52	W	20-51	.392	2-12	.167	19-24	.792	11	30	41	39.5	14	13	16	8	7	61	76.4
at Texas Tech	01/07/12	73-60	W	23-47	.489	7-15	.467	20-30	.667	11	22	33	39.1	18	13	14	5	7	73	76.2
at Kansas State	01/10/12	75-73	W	29-54	.537	6-16	.375	11-15	.733	12	14	26	38.2	27	20	18	2	13	75	76.1
OKLAHOMA STATE	01/14/12	106-65	W	36-68	.529	15-28	.536	19-23	.826	17	31	48	38.8	21	25	14	5	10	106	77.9
at Kansas	01/16/12	74-92	L	29-63	.460	7-23	.304	9-11	.818	8	16	24	38.0	19	20	11	5	12	74	77.7
MISSOURI	01/21/12	88-89	L	36-63	.571	7-16	.438	9-11	.818	11	15	26	37.4	25	23	19	5	7	88	78.2
at Oklahoma	01/24/12	77-65	W	27-50	.540	9-18	.500	14-17	.824	10	21	31	37.0	11	14	12	4	4	77	78.2
TEXAS	01/28/12	76-71	W	22-47	.468	5-15	.333	27-34	.794	12	28	40	37.2	22	14	18	4	2	76	78.0
at Texas A&M	02/01/12	63-60	W	23-58	.397	7-21	.333	10-14	.714	12	27	39	37.3	11	13	7	3	7	63	77.4
Baylor		1702		600-1225	.490	162-398	.407	340-459	.741	259	561	820	37.3	383	352	324	130	184	1702	77.4
Opponents		1391		502-1269	.396	131-406	.323	256-390	.656	279	426	705	32.0	421	271	337	63	155	1391	63.2

Games played: 22
 Points/game: 77.4
 FG Pct: 49.0
 3FG Pct: 40.7
 FT Pct: 74.1

Rebounds/game: 37.3
 Assists/game: 16.0
 Turnovers/game: 14.7
 Assist/turnover ratio: 1.1
 Steals/game: 8.4
 Blocks/game: 5.9

2011-12 BAYLOR BASKETBALL
 Baylor Opponent Game-by-Game (as of Feb 01, 2012)
 All games

OPPONENT STATISTICS

Opponent	Date	Score		Total		3-Pointers		Free throws		Rebounds				pf	a	t/o	blk	stl	pts	avg
				fg-fga	pct	3fg-fga	pct	ft-fta	pct	off	def	tot	avg							
TEXAS SOUTHERN	11/11/11	77-57	w	20-53	.377	7-20	.350	10-20	.500	9	20	29	29.0	30	8	18	1	10	57	57.0
JACKSON STATE	11/13/11	92-59	w	19-63	.302	6-17	.353	15-23	.652	20	19	39	34.0	27	13	19	2	5	59	58.0
SAN DIEGO STATE	11/15/11	77-67	w	21-59	.356	8-24	.333	17-20	.850	13	20	33	33.7	22	8	21	2	10	67	61.0
SOUTH CAROLINA STAT	11/22/11	70-50	w	19-56	.339	6-15	.400	6-11	.545	14	24	38	34.8	16	3	22	5	4	50	58.2
UT ARLINGTON	11/23/11	75-65	w	23-65	.354	7-23	.304	12-21	.571	16	17	33	34.4	26	12	17	5	12	65	59.6
PRAIRIE VIEW A&M	11/29/11	90-54	w	20-60	.333	9-19	.474	5-12	.417	15	22	37	34.8	28	10	19	3	4	54	58.7
at Northwestern	12/04/11	69-41	w	14-58	.241	4-26	.154	9-14	.643	16	18	34	34.7	17	13	12	2	3	41	56.1
BETHUNE-COOKMAN	12/14/11	69-42	w	16-46	.348	2-7	.286	8-15	.533	10	15	25	33.5	16	11	18	1	7	42	54.4
at BYU	12/17/11	86-83	w	32-68	.471	7-21	.333	12-20	.600	19	25	44	34.7	19	14	16	6	6	83	57.6
PAUL QUINN	12/19/11	95-54	w	19-59	.322	3-13	.231	13-19	.684	9	11	20	33.2	10	11	12	3	10	54	57.2
vs Saint Mary's	12/22/11	72-59	w	22-51	.431	5-20	.250	10-15	.667	8	16	24	32.4	18	9	13	0	9	59	57.4
vs West Virginia	12/23/11	83-81	Wot	32-67	.478	9-20	.450	8-15	.533	15	24	39	32.9	14	16	14	4	5	81	59.3
vs Mississippi State	12/28/11	54-52	w	22-54	.407	5-17	.294	3-7	.429	8	24	32	32.8	16	12	14	4	9	52	58.8
TEXAS A&M	01/02/12	61-52	w	18-63	.286	7-25	.280	9-13	.692	15	23	38	33.2	20	9	13	3	5	52	58.3
at Texas Tech	01/07/12	73-60	w	19-48	.396	6-16	.375	16-22	.727	7	18	25	32.7	25	12	13	2	6	60	58.4
at Kansas State	01/10/12	75-73	w	25-50	.500	5-14	.357	18-23	.783	12	16	28	32.4	17	18	20	1	5	73	59.3
OKLAHOMA STATE	01/14/12	106-65	w	21-54	.389	5-19	.263	18-24	.750	8	17	25	31.9	21	9	19	4	7	65	59.6
at Kansas	01/16/12	74-92	L	35-61	.574	6-11	.545	16-21	.762	15	24	39	32.3	12	21	15	4	8	92	61.4
MISSOURI	01/21/12	88-89	L	30-55	.545	7-21	.333	22-31	.710	14	18	32	32.3	14	18	18	5	11	89	62.9
at Oklahoma	01/24/12	77-65	w	27-58	.466	3-12	.250	8-11	.727	12	15	27	32.0	14	14	8	2	5	65	63.0
TEXAS	01/28/12	76-71	w	24-60	.400	7-24	.292	16-26	.615	13	15	28	31.9	25	14	9	2	9	71	63.4
at Texas A&M	02/01/12	63-60	w	24-61	.393	7-22	.318	5-7	.714	11	25	36	32.0	14	16	7	2	5	60	63.2
Opponents		1391		502-1269	.396	131-406	.323	256-390	.656	279	426	705	32.0	421	271	337	63	155	1391	63.2
Baylor		1702		600-1225	.490	162-398	.407	340-459	.741	259	561	820	37.3	383	352	324	130	184	1702	77.4

Games played: 22
 Points/game: 63.2
 FG Pct: 39.6
 3FG Pct: 32.3
 FT Pct: 65.6

Rebounds/game: 32.0
 Assists/game: 12.3
 Turnovers/game: 15.3
 Assist/turnover ratio: 0.8
 Steals/game: 7.0
 Blocks/game: 2.9

Official Basketball Box Score -- Game Totals -- Final Statistics

Oklahoma State vs Baylor

01/14/12 2 p.m. at Ferrell Center; Waco, Texas

Oklahoma State 65 • 9-8 (2-2)

##	Player	f	Total		3-Ptr	Rebounds			PF	TP	A	TO	Blk	Stl	Min
			FG-FGA	FG-FGA	FT-FTA	Off	Def	Tot							
02	Nash, Le'Bryan	f	2-12	0-2	2-2	1	2	3	4	6	2	6	1	0	29
20	Cobbins, Michael	f	2-3	0-0	2-2	0	3	3	4	6	1	1	0	1	22
44	Jurick, Philip	c	2-2	0-0	1-3	4	3	7	3	5	1	2	3	0	30
04	Williams, Brian	g	4-7	1-2	1-2	0	3	3	3	10	0	1	0	0	29
12	Page, Keiton	g	3-11	2-8	7-8	0	3	3	0	15	1	2	0	3	35
01	Guerrero, Cezar		3-8	0-2	2-2	0	0	0	2	8	2	3	0	2	18
14	Soucek, Marek		0-1	0-0	0-0	0	0	0	1	0	2	0	0	0	7
22	Brown, Markel		5-10	2-5	3-5	1	2	3	4	15	0	4	0	1	30
Team						2	1	3							
Totals			21-54	5-19	18-24	8	17	25	21	65	9	19	4	7	200

FG % 1st Half: 11-24 45.8% 2nd half: 10-30 33.3% Game: 21-54 38.9% Deadball Rebounds 0
 3FG % 1st Half: 2-8 25.0% 2nd half: 3-11 27.3% Game: 5-19 26.3%
 FT % 1st Half: 7-9 77.8% 2nd half: 11-15 73.3% Game: 18-24 75.0%

Baylor 106 • 17-0 (4-0) #4/4

##	Player	f	Total		3-Ptr	Rebounds			PF	TP	A	TO	Blk	Stl	Min
			FG-FGA	FG-FGA	FT-FTA	Off	Def	Tot							
01	Jones III, Perry	f	8-12	1-2	2-4	6	6	12	0	19	3	0	0	2	27
04	Acy, Quincy	f	3-9	1-1	8-8	2	4	6	1	15	2	5	2	0	22
30	Miller, Quincy	f	6-10	3-5	6-6	0	4	4	3	21	1	0	1	0	25
05	Heslip, Brady	g	3-9	3-7	0-0	3	2	5	0	9	4	0	0	2	21
22	Walton, A.J.	g	0-1	0-0	0-0	2	0	2	5	0	3	2	0	0	20
00	Franklin, Gary		2-4	2-4	0-0	0	0	0	4	6	0	2	0	0	14
02	Neubert, Jacob		0-0	0-0	0-0	0	0	0	0	0	0	0	0	0	1
03	Ellis, Fred		0-0	0-0	0-0	0	3	3	0	0	1	1	0	0	4
14	Bello, Deuce		1-1	0-0	2-2	0	1	1	4	4	2	0	0	0	14
34	Jefferson, Cory		4-5	0-0	0-1	0	4	4	3	8	0	0	2	0	13
41	Jones, Anthony		3-5	0-0	0-0	2	2	4	0	6	1	0	0	1	10
55	Jackson, Pierre		6-12	5-9	1-2	0	3	3	1	18	8	4	0	5	29
Team						2	2	4							
Totals			36-68	15-28	19-23	17	31	48	21	106	25	14	5	10	200

FG % 1st Half: 15-35 42.9% 2nd half: 21-33 63.6% Game: 36-68 52.9% Deadball Rebounds 2
 3FG % 1st Half: 8-16 50.0% 2nd half: 7-12 58.3% Game: 15-28 53.6%
 FT % 1st Half: 8-10 80.0% 2nd half: 11-13 84.6% Game: 19-23 82.6%

Officials: R-John Higgins, U1-Rick Randall, U2-Kipp Kissinger
 Technical fouls: Oklahoma State-Guerrero, Cezar. Baylor-Walton, A.J..
 Attendance: 9594
 Fouled Out: BU #22 Walton 5:35

Score by periods	1st	2nd	Total
Oklahoma State	31	34	65
Baylor	46	60	106

Points	In Paint	Off T/O	2nd Chance	Fast Break	Bench
OSU	24	19	7	4	23
BU	36	20	21	2	42

Last FG - OSU 2nd-00:07, BU 2nd-00:57.
 Largest lead - OSU by 3 1st-17:45, BU by 43 2nd-00:57.

Score tied - 1 time.
 Lead changed - 3 times.

Official Basketball Box Score -- Game Totals -- Final Statistics

Baylor vs Texas A&M

02/01/12 8:05 PM at Reed Arena; College Station, Texas

Baylor 63 • 20-2, 7-2

##	Player	*	Total		3-Ptr	Rebounds			PF	TP	A	TO	Blk	Stl	Min
			FG-FGA	FG-FGA	FT-FTA	Off	Def	Tot							
01	Jones III, Perry	*	7-13	0-1	1-1	2	3	5	0	15	2	0	0	0	37
04	Acy, Quincy	*	4-6	0-0	3-4	1	3	4	2	11	3	2	1	1	33
05	Heslip, Brady	*	1-6	1-6	0-0	0	0	0	0	3	0	0	0	0	30
30	Miller, Quincy	*	3-8	3-3	0-0	4	7	11	4	9	1	0	1	1	18
55	Jackson, Pierre	*	4-11	2-6	4-5	1	3	4	3	14	5	3	0	3	35
00	Franklin, Gary		1-2	1-2	0-0	0	1	1	0	3	0	1	0	0	7
22	Walton, A.J.		1-6	0-1	1-2	0	3	3	1	3	2	1	0	2	17
34	Jefferson, Cory		1-3	0-1	1-2	1	0	1	1	3	0	0	1	0	8
41	Jones, Anthony		1-3	0-1	0-0	1	5	6	0	2	0	0	0	0	15
Team						2	2	4							
Totals			23-58	7-21	10-14	12	27	39	11	63	13	7	3	7	200

FG % 1st Half: 14-29 48.3% 2nd half: 9-29 31.0% Game: 23-58 39.7% Deadball Rebounds 2
 3FG % 1st Half: 5-12 41.7% 2nd half: 2-9 22.2% Game: 7-21 33.3%
 FT % 1st Half: 3-3 100.0% 2nd half: 7-11 63.6% Game: 10-14 71.4%

Texas A&M 60 • 12-9, 3-6

##	Player	*	Total		3-Ptr	Rebounds			PF	TP	A	TO	Blk	Stl	Min
			FG-FGA	FG-FGA	FT-FTA	Off	Def	Tot							
02	Hibbert, Naji	*	2-7	0-3	0-0	0	1	1	0	4	4	0	0	1	27
04	Davis, Keith	*	2-2	0-0	0-0	3	1	4	2	4	1	0	0	1	22
10	Loubeau, David	*	6-13	0-0	4-5	1	1	2	3	16	1	0	0	0	29
20	Alexander, Daniel	*	4-10	4-7	0-0	0	6	6	3	12	1	0	0	1	35
31	Turner, Elston	*	3-13	2-7	0-0	0	5	5	2	8	6	5	0	1	37
13	Green, Jordan		0-1	0-0	0-0	0	1	1	2	0	1	1	0	1	8
23	Kinsley, Zach		1-4	1-4	0-0	0	1	1	1	3	1	0	0	0	8
24	Baird, Alex		0-1	0-1	0-0	0	2	2	0	0	0	0	0	0	9
35	Turner, Ray		6-10	0-0	1-2	4	7	11	1	13	1	1	2	0	25
Team						3	0	3							
Totals			24-61	7-22	5-7	11	25	36	14	60	16	7	2	5	200

FG % 1st Half: 9-31 29.0% 2nd half: 15-30 50.0% Game: 24-61 39.3% Deadball Rebounds 1
 3FG % 1st Half: 3-13 23.1% 2nd half: 4-9 44.4% Game: 7-22 31.8%
 FT % 1st Half: 4-5 80.0% 2nd half: 1-2 50.0% Game: 5-7 71.4%

Officials: Tom Eades, Doug Sirmons, Randy Heimerman

Technical fouls: Baylor-None. Texas A&M-None.

Attendance: 9309

Score by periods	1st	2nd	Total
Baylor	36	27	63
Texas A&M	25	35	60

Points	In Paint	Off T/O	2nd Chance	Fast Break	Bench
BU	24	8	11	6	11
TAM	24	12	15	7	16

Last FG - BU 2nd-00:17, TAM 2nd-00:29.
 Largest lead - BU by 13 2nd-19:45, TAM by 5 2nd-09:39.

Score tied - 7 times.
 Lead changed - 12 times.



2011-12

20-2

BIG 12

7-2

AP

6

COACHES

6

RPI

3

BAYLOR AT OKLAHOMA STATE | GAME 23
Feb. 4, 2012 (Stillwater, Okla. / Gallagher-Iba Arena)

Baylor Broadcast Notes

Click/scan codes to view each player's complete bio at BaylorBears.com

0		Gary Franklin	G ■ 6-2 ■ 195 ■ So. ■ Santa Ana, Calif.																																	
		<table border="1"> <thead> <tr> <th></th> <th>MIN</th> <th>PTS</th> <th>REB</th> <th>AST</th> <th>FG%</th> <th>3FG%</th> <th>FT%</th> </tr> </thead> <tbody> <tr> <td>SEA</td> <td>11.5</td> <td>3.1</td> <td>0.9</td> <td>0.9</td> <td>38.5</td> <td>40.0</td> <td>—</td> </tr> <tr> <td>B12</td> <td>10.3</td> <td>2.7</td> <td>0.8</td> <td>0.9</td> <td>38.1</td> <td>40.0</td> <td>—</td> </tr> <tr> <td>CAR</td> <td>18.3</td> <td>5.6</td> <td>0.9</td> <td>1.4</td> <td>31.8</td> <td>32.5</td> <td>44.4</td> </tr> </tbody> </table>		MIN	PTS	REB	AST	FG%	3FG%	FT%	SEA	11.5	3.1	0.9	0.9	38.5	40.0	—	B12	10.3	2.7	0.8	0.9	38.1	40.0	—	CAR	18.3	5.6	0.9	1.4	31.8	32.5	44.4	<ul style="list-style-type: none"> 14 of 15 FGs this season are from 3-point range Scored season-high 8 points in Dec. 23 win vs. West Virginia Transferred in January 2011 after playing 13 games as freshman at Cal Sat out spring 2011 semester and will sit out fall 2011 semester Averaged 8.2 points in 25.7 minutes-per-game as freshman at Cal 	
	MIN	PTS	REB	AST	FG%	3FG%	FT%																													
SEA	11.5	3.1	0.9	0.9	38.5	40.0	—																													
B12	10.3	2.7	0.8	0.9	38.1	40.0	—																													
CAR	18.3	5.6	0.9	1.4	31.8	32.5	44.4																													
1		Perry Jones III	F ■ 6-11 ■ 235 ■ So. ■ Duncanville, Texas																																	
		<table border="1"> <thead> <tr> <th></th> <th>MIN</th> <th>PTS</th> <th>REB</th> <th>BLK</th> <th>FG%</th> <th>3FG%</th> <th>FT%</th> </tr> </thead> <tbody> <tr> <td>SEA</td> <td>31.6</td> <td>14.7</td> <td>7.9</td> <td>0.8</td> <td>55.3</td> <td>28.6</td> <td>61.8</td> </tr> <tr> <td>B12</td> <td>31.6</td> <td>15.9</td> <td>8.7</td> <td>0.8</td> <td>56.5</td> <td>16.7</td> <td>59.4</td> </tr> <tr> <td>CAR</td> <td>33.1</td> <td>14.2</td> <td>7.4</td> <td>0.8</td> <td>55.1</td> <td>25.8</td> <td>65.1</td> </tr> </tbody> </table>		MIN	PTS	REB	BLK	FG%	3FG%	FT%	SEA	31.6	14.7	7.9	0.8	55.3	28.6	61.8	B12	31.6	15.9	8.7	0.8	56.5	16.7	59.4	CAR	33.1	14.2	7.4	0.8	55.1	25.8	65.1	<ul style="list-style-type: none"> Two-time Phillips 66 Big 12 Player of the Week John R. Wooden Award Midseason Top 25 DF in 6 of last 7 games / 4 double-doubles this season Missed first 5 games (conclusion of 6-game NCAA suspension) First conference preseason Player of the Year in program history 	
	MIN	PTS	REB	BLK	FG%	3FG%	FT%																													
SEA	31.6	14.7	7.9	0.8	55.3	28.6	61.8																													
B12	31.6	15.9	8.7	0.8	56.5	16.7	59.4																													
CAR	33.1	14.2	7.4	0.8	55.1	25.8	65.1																													
3		Fred Ellis	F ■ 6-5 ■ 200 ■ Sr. ■ Sacramento, Calif.																																	
		<table border="1"> <thead> <tr> <th></th> <th>MIN</th> <th>PTS</th> <th>REB</th> <th>STL</th> <th>FG%</th> <th>3FG%</th> <th>FT%</th> </tr> </thead> <tbody> <tr> <td>SEA</td> <td>9.8</td> <td>2.1</td> <td>1.9</td> <td>0.4</td> <td>26.7</td> <td>37.5</td> <td>100.0</td> </tr> <tr> <td>B12</td> <td>4.0</td> <td>—</td> <td>3.0</td> <td>—</td> <td>—</td> <td>—</td> <td>—</td> </tr> <tr> <td>CAR</td> <td>9.9</td> <td>2.2</td> <td>1.9</td> <td>0.3</td> <td>36.2</td> <td>28.4</td> <td>77.0</td> </tr> </tbody> </table>		MIN	PTS	REB	STL	FG%	3FG%	FT%	SEA	9.8	2.1	1.9	0.4	26.7	37.5	100.0	B12	4.0	—	3.0	—	—	—	—	CAR	9.9	2.2	1.9	0.3	36.2	28.4	77.0	<ul style="list-style-type: none"> DNP in 12 of last 14 games Scored season-high 7 points, grabbed 5 reb Nov. 13 vs. Jackson State Graduated from Baylor in December 2010, in graduate school First member of family to graduate from college Played in 31 games in 2010-11, averaging 3.6 pts in 16.0 min 	
	MIN	PTS	REB	STL	FG%	3FG%	FT%																													
SEA	9.8	2.1	1.9	0.4	26.7	37.5	100.0																													
B12	4.0	—	3.0	—	—	—	—																													
CAR	9.9	2.2	1.9	0.3	36.2	28.4	77.0																													
4		Quincy Acy	F ■ 6-7 ■ 235 ■ Sr. ■ Mesquite, Texas																																	
		<table border="1"> <thead> <tr> <th></th> <th>MIN</th> <th>PTS</th> <th>REB</th> <th>BLK</th> <th>STL</th> <th>FG%</th> <th>FT%</th> </tr> </thead> <tbody> <tr> <td>SEA</td> <td>29.2</td> <td>12.5</td> <td>6.8</td> <td>2.3</td> <td>1.0</td> <td>58.4</td> <td>77.1</td> </tr> <tr> <td>B12</td> <td>29.8</td> <td>12.6</td> <td>5.8</td> <td>2.1</td> <td>1.0</td> <td>58.0</td> <td>86.1</td> </tr> <tr> <td>CAR</td> <td>24.4</td> <td>9.6</td> <td>5.7</td> <td>1.3</td> <td>0.7</td> <td>60.8</td> <td>69.4</td> </tr> </tbody> </table>		MIN	PTS	REB	BLK	STL	FG%	FT%	SEA	29.2	12.5	6.8	2.3	1.0	58.4	77.1	B12	29.8	12.6	5.8	2.1	1.0	58.0	86.1	CAR	24.4	9.6	5.7	1.3	0.7	60.8	69.4	<ul style="list-style-type: none"> 17th in BU history in scoring (1,180), 8th in rebounding (695) 51% of career FGs are dunks (222 of 439) / 444 points on dunks Ranks 2nd in school history in career FG pct (60.8) 2nd in school history in career blocks (158) 41 career games with 2+ blocks (BU 31-10 in those games) 	
	MIN	PTS	REB	BLK	STL	FG%	FT%																													
SEA	29.2	12.5	6.8	2.3	1.0	58.4	77.1																													
B12	29.8	12.6	5.8	2.1	1.0	58.0	86.1																													
CAR	24.4	9.6	5.7	1.3	0.7	60.8	69.4																													
5		Brady Heslip	G ■ 6-2 ■ 180 ■ So. ■ Burlington, Ontario																																	
		<table border="1"> <thead> <tr> <th></th> <th>MIN</th> <th>PTS</th> <th>REB</th> <th>AST</th> <th>FG%</th> <th>3FG%</th> <th>FT%</th> </tr> </thead> <tbody> <tr> <td>SEA</td> <td>26.2</td> <td>9.7</td> <td>1.3</td> <td>1.3</td> <td>44.2</td> <td>44.5</td> <td>95.0</td> </tr> <tr> <td>B12</td> <td>26.8</td> <td>8.1</td> <td>1.2</td> <td>1.8</td> <td>38.3</td> <td>36.2</td> <td>90.9</td> </tr> <tr> <td>CAR</td> <td>26.2</td> <td>9.7</td> <td>1.3</td> <td>1.3</td> <td>44.2</td> <td>44.5</td> <td>95.0</td> </tr> </tbody> </table>		MIN	PTS	REB	AST	FG%	3FG%	FT%	SEA	26.2	9.7	1.3	1.3	44.2	44.5	95.0	B12	26.8	8.1	1.2	1.8	38.3	36.2	90.9	CAR	26.2	9.7	1.3	1.3	44.2	44.5	95.0	<ul style="list-style-type: none"> Big 12 Rookie of the Week (Dec. 26) Ranks 2nd in Big 12 in 3FG made, 5th in 3FG% Has made at least 1 3FG in 21 of 22 games 57 of his 69 FGM have been 3-point range Sat out 2010-11 after transferring from Boston College 	
	MIN	PTS	REB	AST	FG%	3FG%	FT%																													
SEA	26.2	9.7	1.3	1.3	44.2	44.5	95.0																													
B12	26.8	8.1	1.2	1.8	38.3	36.2	90.9																													
CAR	26.2	9.7	1.3	1.3	44.2	44.5	95.0																													
11		J'mison Morgan	F/C ■ 6-11 ■ 250 ■ Sr. ■ Dallas, Texas																																	
		<table border="1"> <thead> <tr> <th></th> <th>MIN</th> <th>PTS</th> <th>REB</th> <th>BLK</th> <th>STL</th> <th>FG%</th> <th>FT%</th> </tr> </thead> <tbody> <tr> <td>SEA</td> <td>—</td> <td>—</td> <td>—</td> <td>—</td> <td>—</td> <td>—</td> <td>—</td> </tr> <tr> <td>B12</td> <td>—</td> <td>—</td> <td>—</td> <td>—</td> <td>—</td> <td>—</td> <td>—</td> </tr> <tr> <td>CAR</td> <td>9.4</td> <td>2.5</td> <td>1.7</td> <td>0.8</td> <td>0.3</td> <td>49.7</td> <td>39.0</td> </tr> </tbody> </table>		MIN	PTS	REB	BLK	STL	FG%	FT%	SEA	—	—	—	—	—	—	—	B12	—	—	—	—	—	—	—	CAR	9.4	2.5	1.7	0.8	0.3	49.7	39.0	<ul style="list-style-type: none"> Projected to redshirt for 2011-12 season Played in all 31 games, making 14 starts, in first season at Baylor Finished 2010-11 with 14 consecutive starts Posted 2+ blks in 11 games in 2010-11 (Baylor 8-3 in those gms) Had more blks (34) in 2010-11 than in two-year UCLA career (26) 	
	MIN	PTS	REB	BLK	STL	FG%	FT%																													
SEA	—	—	—	—	—	—	—																													
B12	—	—	—	—	—	—	—																													
CAR	9.4	2.5	1.7	0.8	0.3	49.7	39.0																													
14		Deuce Bello	G ■ 6-4 ■ 185 ■ Fr. ■ Greensboro, N.C.																																	
		<table border="1"> <thead> <tr> <th></th> <th>MIN</th> <th>PTS</th> <th>REB</th> <th>AST</th> <th>FG%</th> <th>3FG%</th> <th>FT%</th> </tr> </thead> <tbody> <tr> <td>SEA</td> <td>11.1</td> <td>4.1</td> <td>2.4</td> <td>0.5</td> <td>47.8</td> <td>20.0</td> <td>53.6</td> </tr> <tr> <td>B12</td> <td>7.3</td> <td>1.8</td> <td>1.5</td> <td>0.5</td> <td>66.7</td> <td>—</td> <td>75.0</td> </tr> <tr> <td>CAR</td> <td>11.1</td> <td>4.1</td> <td>2.4</td> <td>0.5</td> <td>47.8</td> <td>20.0</td> <td>53.6</td> </tr> </tbody> </table>		MIN	PTS	REB	AST	FG%	3FG%	FT%	SEA	11.1	4.1	2.4	0.5	47.8	20.0	53.6	B12	7.3	1.8	1.5	0.5	66.7	—	75.0	CAR	11.1	4.1	2.4	0.5	47.8	20.0	53.6	<ul style="list-style-type: none"> Made 2012 debut at K-State (3 pts, 2 reb in 5 min) 13 of 22 FGM have been dunks Career-high 10 points — 4 dunks — in Nov. 29 win vs. Prairie View A&M Has had two dunks on SportsCenter Top 10 Plays (both No. 2) Rated one of the best dunkers in the world — at any level 	
	MIN	PTS	REB	AST	FG%	3FG%	FT%																													
SEA	11.1	4.1	2.4	0.5	47.8	20.0	53.6																													
B12	7.3	1.8	1.5	0.5	66.7	—	75.0																													
CAR	11.1	4.1	2.4	0.5	47.8	20.0	53.6																													
22		A.J. Walton	G ■ 6-1 ■ 185 ■ Jr. ■ Little Rock, Ark.																																	
		<table border="1"> <thead> <tr> <th></th> <th>MIN</th> <th>PTS</th> <th>AST</th> <th>STL</th> <th>FG%</th> <th>3FG%</th> <th>FT%</th> </tr> </thead> <tbody> <tr> <td>SEA</td> <td>19.6</td> <td>3.8</td> <td>3.3</td> <td>1.5</td> <td>33.3</td> <td>19.0</td> <td>74.4</td> </tr> <tr> <td>B12</td> <td>18.1</td> <td>3.4</td> <td>2.3</td> <td>1.2</td> <td>29.6</td> <td>14.3</td> <td>87.5</td> </tr> <tr> <td>CAR</td> <td>23.4</td> <td>5.2</td> <td>3.2</td> <td>1.6</td> <td>41.2</td> <td>37.5</td> <td>63.9</td> </tr> </tbody> </table>		MIN	PTS	AST	STL	FG%	3FG%	FT%	SEA	19.6	3.8	3.3	1.5	33.3	19.0	74.4	B12	18.1	3.4	2.3	1.2	29.6	14.3	87.5	CAR	23.4	5.2	3.2	1.6	41.2	37.5	63.9	<ul style="list-style-type: none"> Streak of 48 consecutive starts at PG snapped Jan. 21 vs. Missouri Ranks 9th in school history with 144 career steals 28 career 5+ assists games (Baylor 23-5) 23 career games with 3+ steals Played for Athletes In Action last two summers 	
	MIN	PTS	AST	STL	FG%	3FG%	FT%																													
SEA	19.6	3.8	3.3	1.5	33.3	19.0	74.4																													
B12	18.1	3.4	2.3	1.2	29.6	14.3	87.5																													
CAR	23.4	5.2	3.2	1.6	41.2	37.5	63.9																													
30		Quincy Miller	F ■ 6-9 ■ 210 ■ Fr. ■ Chicago, Ill.																																	
		<table border="1"> <thead> <tr> <th></th> <th>MIN</th> <th>PTS</th> <th>REB</th> <th>AST</th> <th>FG%</th> <th>3FG%</th> <th>FT%</th> </tr> </thead> <tbody> <tr> <td>SEA</td> <td>25.5</td> <td>12.6</td> <td>5.3</td> <td>1.6</td> <td>48.4</td> <td>43.2</td> <td>77.6</td> </tr> <tr> <td>B12</td> <td>26.2</td> <td>14.9</td> <td>5.6</td> <td>0.8</td> <td>50.0</td> <td>47.8</td> <td>78.6</td> </tr> <tr> <td>CAR</td> <td>25.5</td> <td>12.6</td> <td>5.3</td> <td>1.6</td> <td>48.4</td> <td>43.2</td> <td>77.6</td> </tr> </tbody> </table>		MIN	PTS	REB	AST	FG%	3FG%	FT%	SEA	25.5	12.6	5.3	1.6	48.4	43.2	77.6	B12	26.2	14.9	5.6	0.8	50.0	47.8	78.6	CAR	25.5	12.6	5.3	1.6	48.4	43.2	77.6	<ul style="list-style-type: none"> Tied CH 11 rebounds at Texas A&M (Feb. 1) 3+ assists in 4 games 3 20-point games this season — CH 29 points Jan. 21 vs. Missouri Career-first double-double (17 points, 11 rebounds) vs. UTA (Nov. 23) Named to Naismith Trophy Watch List 	
	MIN	PTS	REB	AST	FG%	3FG%	FT%																													
SEA	25.5	12.6	5.3	1.6	48.4	43.2	77.6																													
B12	26.2	14.9	5.6	0.8	50.0	47.8	78.6																													
CAR	25.5	12.6	5.3	1.6	48.4	43.2	77.6																													
34		Cory Jefferson	F ■ 6-9 ■ 210 ■ RSo. ■ Killeen, Texas																																	
		<table border="1"> <thead> <tr> <th></th> <th>MIN</th> <th>PTS</th> <th>REB</th> <th>BLK</th> <th>FG%</th> <th>3FG%</th> <th>FT%</th> </tr> </thead> <tbody> <tr> <td>SEA</td> <td>12.1</td> <td>4.2</td> <td>3.0</td> <td>1.5</td> <td>56.8</td> <td>—</td> <td>61.3</td> </tr> <tr> <td>B12</td> <td>8.0</td> <td>2.2</td> <td>1.0</td> <td>0.7</td> <td>64.3</td> <td>—</td> <td>40.0</td> </tr> <tr> <td>CAR</td> <td>8.4</td> <td>2.8</td> <td>2.1</td> <td>0.9</td> <td>52.3</td> <td>—</td> <td>63.6</td> </tr> </tbody> </table>		MIN	PTS	REB	BLK	FG%	3FG%	FT%	SEA	12.1	4.2	3.0	1.5	56.8	—	61.3	B12	8.0	2.2	1.0	0.7	64.3	—	40.0	CAR	8.4	2.8	2.1	0.9	52.3	—	63.6	<ul style="list-style-type: none"> Has 2+ blocks in 10 games / at least 1 block in 15 games Career-high 7 blocks vs. UTA (Nov. 23) Career-high 13 points with 9 rebounds, 3 blocks Nov. 13 vs. JSU Career-first double-double (10 pts, 10 reb) Nov. 11 vs. TSU Redshirted in 2010-11, Played in 21 games as freshman in 2009-10 	
	MIN	PTS	REB	BLK	FG%	3FG%	FT%																													
SEA	12.1	4.2	3.0	1.5	56.8	—	61.3																													
B12	8.0	2.2	1.0	0.7	64.3	—	40.0																													
CAR	8.4	2.8	2.1	0.9	52.3	—	63.6																													
41		Anthony Jones	F ■ 6-10 ■ 195 ■ Sr. ■ Houston, Texas																																	
		<table border="1"> <thead> <tr> <th></th> <th>MIN</th> <th>PTS</th> <th>REB</th> <th>STL</th> <th>FG%</th> <th>3FG%</th> <th>FT%</th> </tr> </thead> <tbody> <tr> <td>SEA</td> <td>16.9</td> <td>5.3</td> <td>3.5</td> <td>0.8</td> <td>44.9</td> <td>31.7</td> <td>53.3</td> </tr> <tr> <td>B12</td> <td>11.9</td> <td>3.2</td> <td>2.3</td> <td>0.3</td> <td>44.4</td> <td>36.4</td> <td>50.0</td> </tr> <tr> <td>CAR</td> <td>21.8</td> <td>5.8</td> <td>3.9</td> <td>0.5</td> <td>44.5</td> <td>33.6</td> <td>71.3</td> </tr> </tbody> </table>		MIN	PTS	REB	STL	FG%	3FG%	FT%	SEA	16.9	5.3	3.5	0.8	44.9	31.7	53.3	B12	11.9	3.2	2.3	0.3	44.4	36.4	50.0	CAR	21.8	5.8	3.9	0.5	44.5	33.6	71.3	<ul style="list-style-type: none"> Streak of 73 consecutive starts snapped Dec. 4 at Northwestern Career-high 21 points, career-high 5 steals Nov. 22 vs. SCSU 3rd career double-double Nov. 11 vs. TSU (11 pts, career-high 12 reb) 26 career double-figure scoring games (BU 21-5 in such contests) Only Baylor player to start all 31 games in 2010-11 	
	MIN	PTS	REB	STL	FG%	3FG%	FT%																													
SEA	16.9	5.3	3.5	0.8	44.9	31.7	53.3																													
B12	11.9	3.2	2.3	0.3	44.4	36.4	50.0																													
CAR	21.8	5.8	3.9	0.5	44.5	33.6	71.3																													
55		Pierre Jackson	G ■ 5-10 ■ 180 ■ Jr. ■ Las Vegas, Nev.																																	
		<table border="1"> <thead> <tr> <th></th> <th>MIN</th> <th>PTS</th> <th>REB</th> <th>AST</th> <th>FG%</th> <th>3FG%</th> <th>FT%</th> </tr> </thead> <tbody> <tr> <td>SEA</td> <td>28.5</td> <td>12.6</td> <td>3.0</td> <td>6.0</td> <td>49.5</td> <td>49.4</td> <td>83.6</td> </tr> <tr> <td>B12</td> <td>33.6</td> <td>13.2</td> <td>3.4</td> <td>8.3</td> <td>45.1</td> <td>50.0</td> <td>80.6</td> </tr> <tr> <td>CAR</td> <td>28.5</td> <td>12.6</td> <td>3.0</td> <td>6.0</td> <td>49.5</td> <td>49.4</td> <td>83.6</td> </tr> </tbody> </table>		MIN	PTS	REB	AST	FG%	3FG%	FT%	SEA	28.5	12.6	3.0	6.0	49.5	49.4	83.6	B12	33.6	13.2	3.4	8.3	45.1	50.0	80.6	CAR	28.5	12.6	3.0	6.0	49.5	49.4	83.6	<ul style="list-style-type: none"> Finalist for 2012 Bob Cousy Award / Las Vegas Classic MVP 3 double-doubles / 20 pts, 15 ast vs. Missouri (Jan. 21) Made GW layup to beat Mississippi State (Dec. 28) Scored career-high 23 points in Dec. 23 win vs. West Virginia Block at end of regulation to secure 86-83 win Dec. 17 at BYU 	
	MIN	PTS	REB	AST	FG%	3FG%	FT%																													
SEA	28.5	12.6	3.0	6.0	49.5	49.4	83.6																													
B12	33.6	13.2	3.4	8.3	45.1	50.0	80.6																													
CAR	28.5	12.6	3.0	6.0	49.5	49.4	83.6																													

Head Coach: Scott Drew; Assistant Coaches: Jerome Tang, Grant McCasland, Paul Mills; Director of Operations: Tim Maloney

BAYLORBears.COM / @BAYLORMBB