



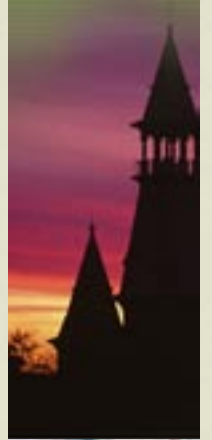
Football.

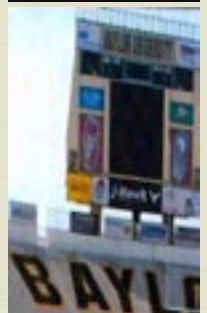
May 13, 2004

BAYLOR UNIVERSITY FOOTBALL PRACTICE FACILITY

“...to educate men and women for worldwide leadership and service by integrating academic excellence and Christian commitment within a caring community.”

- Baylor's Mission.





- Imperative I *Create a truly residential campus.*
- Imperative II *Establish an environment where learning can flourish.*
- Imperative III *Develop a world-class faculty.*
- Imperative IV *Attract and support a top-tier student body.*
- Imperative V *Initiate outstanding new academic programs in selected areas.*
- Imperative VI *Guide all Baylor students through academic and student life programs to understand life as a stewardship and work as a vocation.*
- Imperative VII *Provide outstanding academic facilities.*
- **Imperative VIII** ***Construct useful and aesthetically pleasing physical spaces.***
- Imperative IX *Enhance involvement of the entire Baylor family.*
- **Imperative X** ***Build with integrity a winning athletic tradition in all sports.***
- Imperative XI *Emphasize global education.*
- Imperative XII *Achieve a two-billion dollar endowment.*

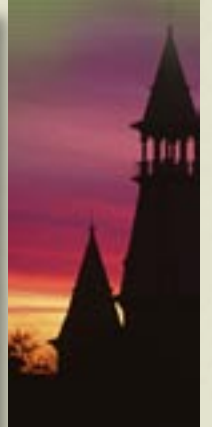
		Indoor Practice Facility	SwimEx Rehab Pool	Spa Pool	Cold Plunge Pool	Dry Sauna	Steam Sauna	Natural Turf Practice Field	Full-Size Artificial Turf Practice Field	Lighted Practice Fields	Indoor Field Netting	Naturally-Cooled Indoor Field	Conditioned Indoor Field	Observation/ Film Tower	
Baylor	http://baylorbears.ocsn.com/	●	●	●	●	●	●								
Colorado	http://www.cubuffs.com/	●	●	●	●			●	●	●				●	
Iowa State	http://www.sportsmed.athletic.iastate.edu/page18.html	●	●	●	●		●	●	●	●	●		●	●	
Kansas	http://www.kuathletics.com/	●	●	●	●			●	●	●	●				
Kansas State	http://www.k-statesports.com/	●	●	●	●		●	●	●	●	●			●	
Missouri	http://mufigers.ocsn.com/general/sportmedicine.html	●	●	●	●	●	●	●	●	●	●				
Nebraska	http://www.huskers.com/	●	●	●	●		●	●	●	●	●				
Oklahoma	http://www.soonersports.com/	●	●	●	●	●	●	●	●	●	●		●	●	
Oklahoma State	http://p.okstate.edu/plona/step/facilitiespage.htm	●	●	●	●	●	●	●	●	●	●				
SMU	http://www.smu.edu/	●	●	●	●	●	●	●	●	●	●			●	
TCU	http://www.tcu.com/	●	●	●	●	●	●	●	●	●	●			●	
Texas	http://texasports.com	●	●	●	●	●	●	●	●	●	●		●	●	
Texas A&M	http://sports.tamu.edu/	●	●	●	●			●	●	●	●			●	
Texas Tech	http://texassteele.ocsn.com/	●	●	●	●			●	●	●	●			●	
		●	Symbol indicates presence of equipment / facility												



Phase One.



5



Baylor Bears Football Practice Facility. ENTRY VIEW TO FOOTBALL CENTER

LEVEL ONE:	<i>Net(sq ft)</i>	Gross(sq ft)
Weight Training	8,210 sf	8,700 sf
Connecting Circulation	730 sf	750 sf
Team Locker Areas	11,800 sf	12,400 sf
Entry/Lobby	1,150 sf	1,300 sf
Sports Medicine	7,520 sf	8,020 sf
<i>Sub-Total/ Level One</i>	<i>29,400 sf</i>	31,170 sf

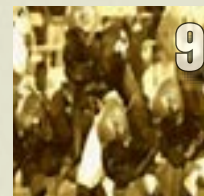
LEVEL TWO:		
Exercise Mezzanine	3,560 sf	3,770 sf
Connecting Circulation	730 sf	750 sf
Team Conference Area	11,800 sf	12,400 sf
Coaches' Area	8,210 sf	8,700 sf
<i>Sub-Total/ Level Two</i>	<i>24,300 sf</i>	25,620 sf

TOTAL BUILDING	53,700 sf	56,800 sf
-----------------------	------------------	------------------



6





Baylor Bears Football Practice Facility. *LEVEL ONE FLOOR PLAN*



Baylor Bears Football Practice Facility. *LEVEL TWO FLOOR PLAN*

“All who love Baylor...all who care about faith, values and service...all who care about the highest quality of Christian education possible are challenged to share the vision.”

- University Development

